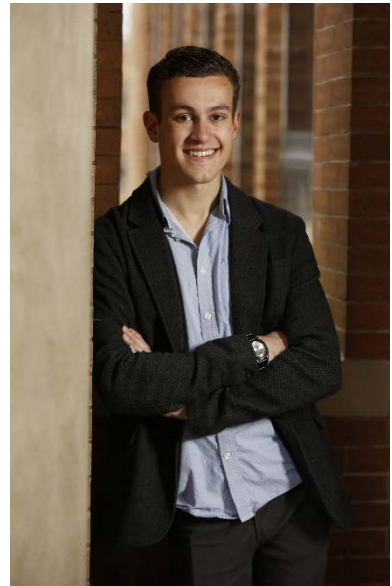




North Central College Class of 2015  
**First Destination Report**



The information below reflects the post graduate plans and activities of the **Class of 2015.**

**This report includes:**

- Data collection process
- A summary of the overall statistics for the class of 2015 “Placement” numbers
- Jobs obtained related to major or area of study
- Internship participation
- Reasons why members of this class have **not** accepted full-time employment
- Number of graduate school applications and acceptances
- Number of graduates who utilized the services of the Career Development office
- Data comparison from previous years
- List of full-time employers
- List of internship sites
- List of graduate and professional schools
- List of graduate degrees and programs of study

**Collection Process:**

**750** Students graduating between 9/14 - 6/15

**653** Student responses

**87% Knowledge Rate**

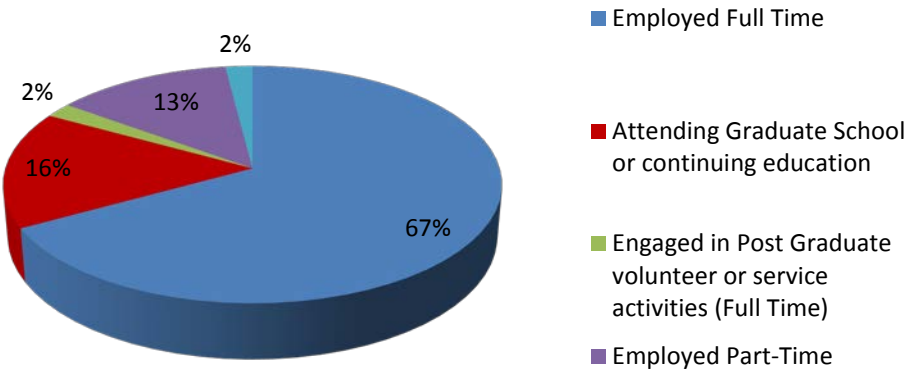
For any graduating student who was not employed full-time or accepted into graduate school at the time of June graduation (information gathered via Qualtrics or a hard copy of the survey), each alum was contacted six months later to verify their status. Over 400 alumni were called 3 separate times each during the evening hours in December, with a voice message left the first two times by the caller. Following the 2<sup>nd</sup> round of calling, a text message was sent with a link to the Qualtrics survey. If an individual was not reached, a daytime follow up call (100+) was generated to each of those alumni. If no information was obtained via phone, the internet was utilized (LinkedIn or Facebook) to obtain employment or graduate school status for over 80 alumni. Additionally, information was collected from 3<sup>rd</sup> parties such as parents, coaches and administration. In total, 97 individuals did not respond to our efforts to gather information.

**Summary:**

<b>427</b> (67%)	Graduates contacted are <b>Employed Full-Time*</b> <i>Includes 5 participating in full-time volunteer or service program Includes 2 enlisted in the Military</i>
<b>125</b> (20%)	Graduates contacted are <b>Attending Graduate School or continuing education</b> <i>(Includes 24 graduates who also work full-time)</i>
<b>14</b> (2%)	Graduates contacted are <b>Engaging in Post-Graduate Internship/Fellowship/Student teaching</b>
<b>80</b> (13%)	Graduates contacted are <b>Employed Part-Time</b> <i>Within Major: 31 NOT Within Major: 49</i>
<b>10</b> (2%)	Graduates contacted are <b>Unemployed /Seeking Employment</b>

*\*Total exceeds 100% due to 24 graduates attending graduate school and employed full-time simultaneously  
\*20 students were not seeking employment or post graduate activity following graduation and were not included in the analysis*

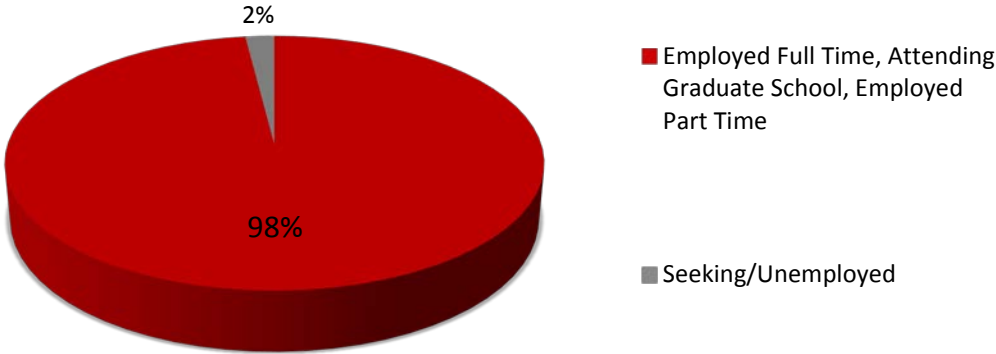
## Class of 2015 Destinations: A



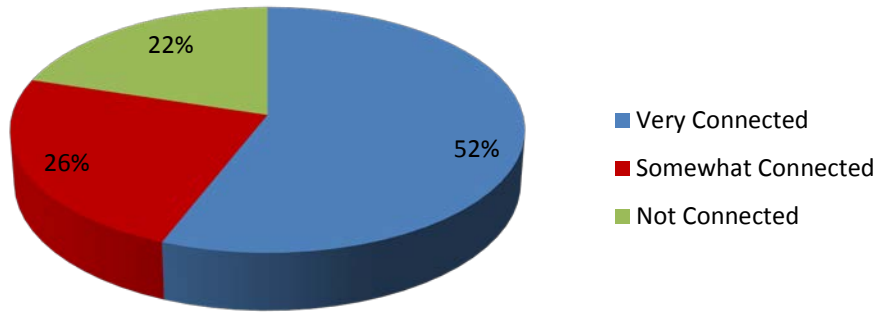
**85%** of the class of 2015 who was contacted is either employed Full-Time, attending Graduate School or participating in Post Graduate service or academic activities.

**98%** of the class of 2015 who was contacted is either employed (Full-Time or Part-Time), attending Graduate School, or participating in Post Graduate volunteer or service activities.

## Class of 2015 Destinations: B



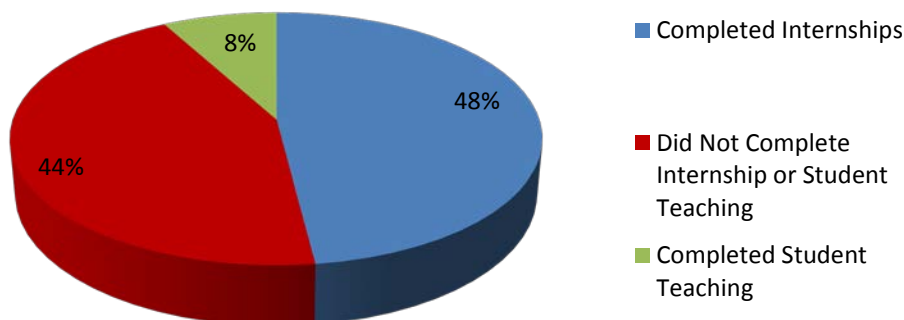
## Employment as related to field of study



**78%** of the members of the Class of 2015 who responded to this question stated that their full-time or part-time job relates to their North Central major or field of study.

(For a list of places of full-time employment for the Class of 2015, see page 9.)

## Internship/Student Teaching Participation by the class of 2015



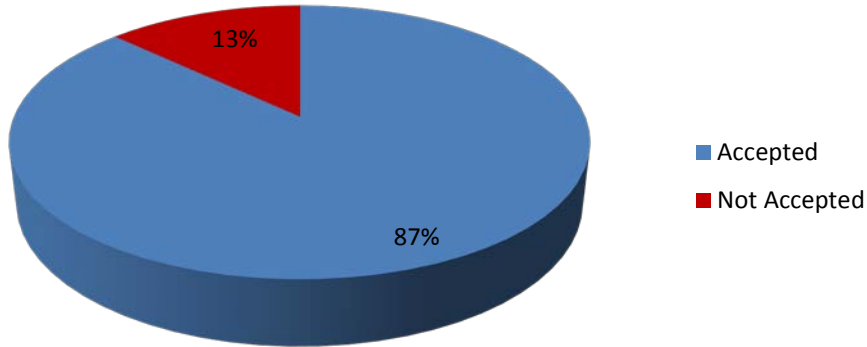
**48%** of the students participated in a for-credit or non-credit internship sometime during their four years in college. An additional **8%** Completed Student Teaching.

**80%** of those responding reported that these opportunities provided skills and experiences that helped them obtain their first job.

**20%** of those involved in experiential learning received full-time job offers from their internship or student teaching site.

(For list of sites where members of the Class of 2015 interned, see page 12.)

## Graduate Program Acceptance of those who applied



Of the respondents, **23%** (143 members of the graduating class) applied to attend graduate school for the 2014-2015 academic year.

Of those who applied, **87%** of them had been accepted. (Does not include 10 pending applicants)

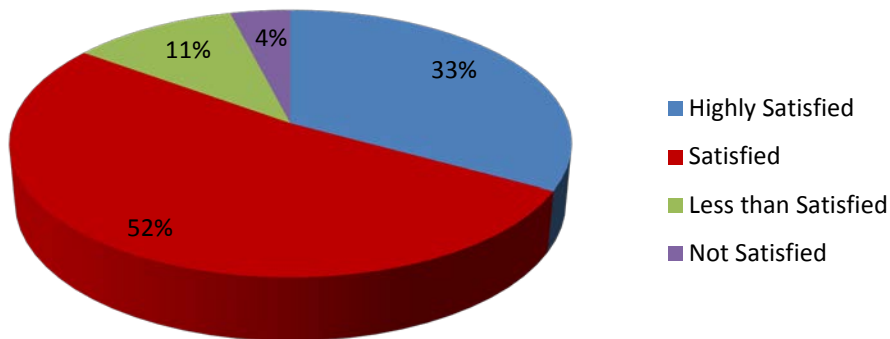
**92%** indicated that their graduate program was very connected or somewhat connected to their undergraduate field of study.

(For a list of graduate degrees and institutions for members of the Class of 2015, see page 14.)

## Satisfaction with North Central College Education:

In relation to investment made in North Central College education, degree of satisfaction with employment or other post-graduation plans

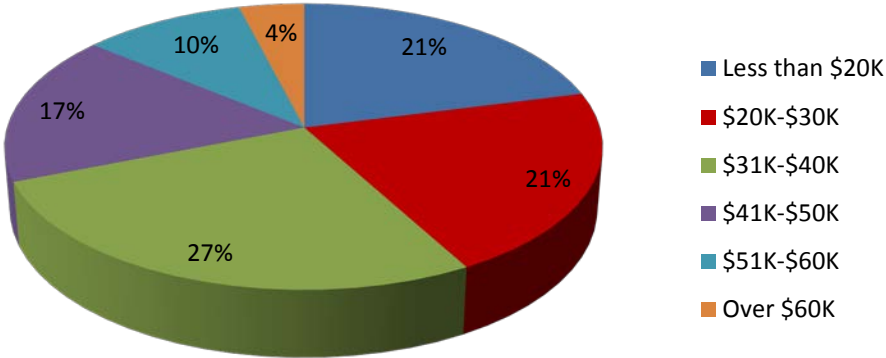
### Post-Graduation Satisfaction Rate



**85%** of the members of the Class of 2015 who responded to this question stated that they either highly satisfied or satisfied with the investment they made in North Central in relation to their employment or other post graduate plans.

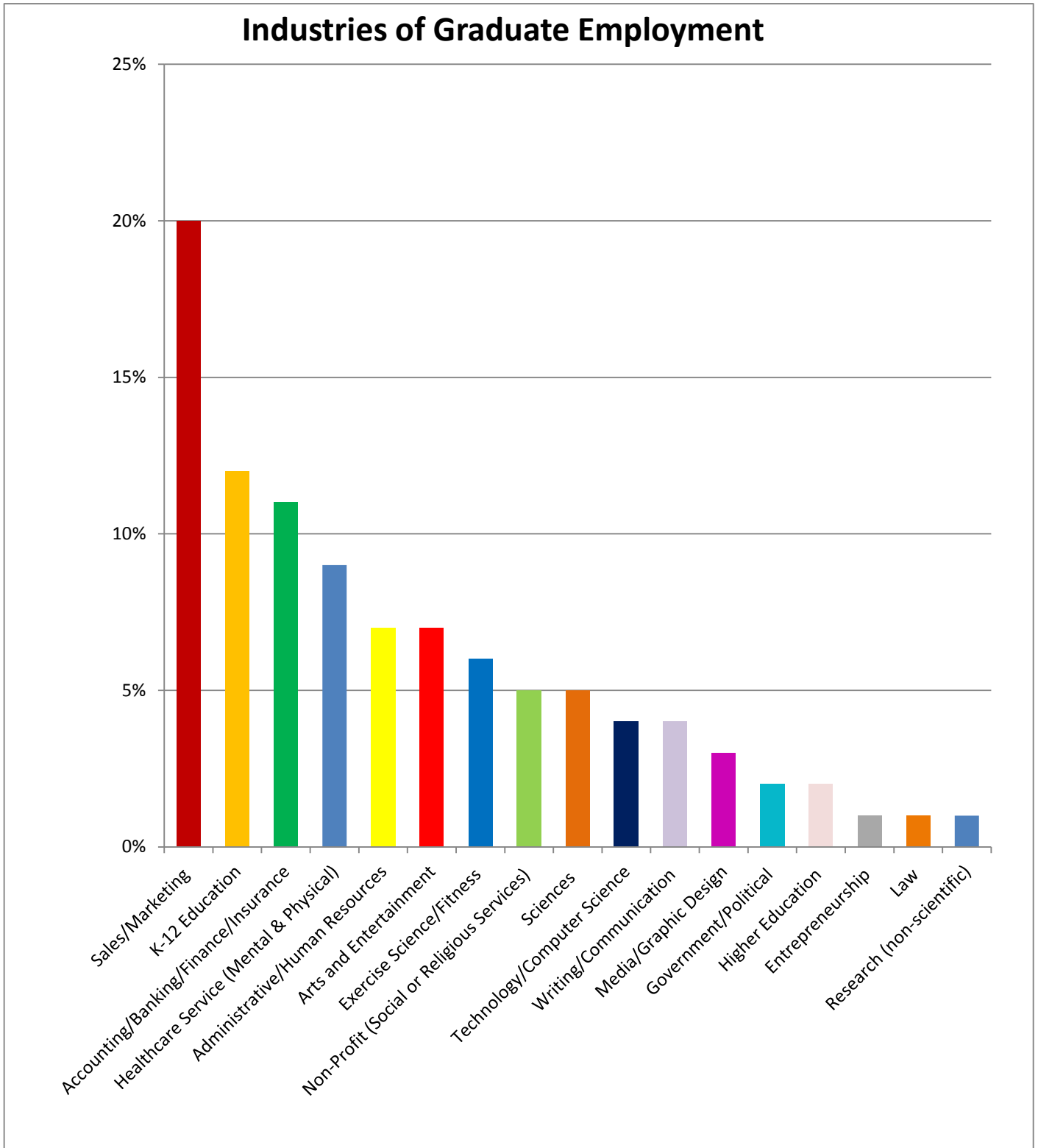
**Reported Annual Base Salary:**

**Annual Base Salary**



\*Full-Time only

## Industries in Which Class of 2015 are Employed:



<b>2013-2015 Graduate Comparison</b>			
	<b>2013</b>	<b>2014</b>	<b>2015</b>
<b>Number of Graduates</b>	<b>628</b>	<b>695</b>	<b>750</b>
<b>Number Contacted</b>	<b>76% (480)</b>	<b>78% (541)</b>	<b>87% (653)</b>
<b>Use of Career Development</b>	<b>69% (331)</b>	<b>58% (313)</b>	<b>62% (405)</b>
<b>Satisfaction with Career Development</b>	<b>87% (287)</b>	<b>87% (279)</b>	<b>83% (336)</b>
<b>Participated in an Internship</b>	<b>65% (312)</b>	<b>49% (259)</b> 59% including Student Teaching	<b>48% (314)</b> 56% including Student Teaching
<b>Employed Full-Time</b>	<b>65% (312)</b>	<b>62% (337)</b>	<b>67% (427)</b>
<b>Not Seeking</b>	<b>1% (8)</b>	<b>2% (11)</b>	<b>3% (20)</b>
<b>Unemployed</b>	<b>3% (15)</b>	<b>5% (25)</b>	<b>2% (10)</b>
<b>Employed Part-Time</b>	<b>12% (58)</b>	<b>12% (65)</b>	<b>13% (80)</b>
<b>Volunteer/Service</b>	<b>&lt;1% (2)</b>	<b>&lt;1% (2)</b>	<b>1% (5)</b>
<b>Post-graduate Fellowship/Internship</b>	<b>3% (15)</b>	<b>2% (12)</b>	<b>2% (15)</b>
<b>Military</b>	<b>&lt;1% (1)</b>	<b>0% (0)</b>	<b>&lt;1% (2)</b>
<b>Applied to Graduate School</b>	<b>16% (103)</b>	<b>19% (133)</b>	<b>23% (143)</b>
<b>Accepted to Graduate School</b>	<b>18% (87)</b>	<b>19% (107)</b>	<b>20% (124)</b>
<b>Graduate School Acceptance Rate</b>	<b>84%</b>	<b>80%</b>	<b>87%</b>
<b>Composite Including Part-Time Employment</b>	<b>98%</b>	<b>95%</b>	<b>98%</b>
<b>Composite Excluding Part-Time Employment</b>	<b>86%</b>	<b>83%</b>	<b>85%</b>



## Utilization of Career Development:

**62%** of the graduating seniors confirmed that they had used the services of Career Development, with **83%** of those finding the services useful.

## List of Full-Time Employers for the Class of 2015

3WON LLC	Bridgedale Academy
AAU	British Petroleum
Abercrombie & Fitch	Buikema Ace Hardware
ABN AMRO	C.H. Robinson
ABT Electronics	Cardinal Health
Accelis Pharma	Carson Elementary School
Accenture	CCI Green Heart
Actors Training Center	CCSD Schaumburg 54
Adoption Foundation	CDK Global
ADP	CDW
Advocate Health Care Condell Medical Center	CH2M
ALDI US	Chase Banking
ALE Solutions Inc.	Chicago Bears
Alexian Brothers Health Hospital	Chicago Public Schools
Allegras Energy	City of Elgin
Allendale Association	City Year
Alliance Marketing Inc.	CityStaffing
Allstate	CLEAResult
American Airlines	Clover Technologies
American Cancer Society	CM Services
Anixter Inc.	CNL Financial Services
Anne Fox Elementary	Cognitive Arts
Apartments.com	Community Christian Church
Apple Inc.	Compass Mortgage
Applied Systems	Concordia University
Argonne National Laboratory	Country Club Hills School District 160
Ash Lawn Opera	CrossFit Naperville
Associated Bank	Crossroads
AT&T	Cunningham Children's home
Athletico	CUSD 200
ATI Physical Therapy	Deerfield School District 109
Aurora University	Deloitte
Auxsable Elementary	Denver Public Schools
Aviation Port Services	Desert Heights Preparatory Academy
AXA	DeVry Education Group
Barton Associates	Dialogue Direct
Behavioral Perspectives	Digital Alliance
Beloit College	Disney College Program
Berkley YMCA	District 303
Big Frog	District 308
BKD	District 45
Blick Art Materials	District 68
Bluewolf	Dundee-Crown High School

Eastland Elementary School  
Echo Global Logistics  
Edward Health and Fitness Center  
Edwards Hospital Naperville  
ELKAY  
Ella's Coffee  
Enterprise Rent-a-Car  
Equity Builders  
Equity LifeStyle Properties  
Explosive Speed Gym  
Express Employment Professionals  
Fair Oaks Nursing Home  
Fastenal  
Fauk Valley Media  
Fehr Solutions  
FIBA/Udeconce  
Fifth Third Bank  
First Impression Interactive  
FIS  
Fisher Middle School  
Fitness Together  
Fowler School District  
Fulbright  
GAP, INC  
Gaskill Creative  
Giant Steps  
Gladson LLC  
Glenbard East High School  
Goodwill Industries  
Grand Productions Marketing  
Grange Insurance  
Grant Thornton  
H&R Block  
Hard Gainer's Athletics  
Helping Hands  
Hematogenix Pharma Services  
Herff Jones  
Hill Middle School  
Home City Ice  
Hotel Arista  
HT Associates  
Illinois Math and Science Academy  
Indiana State University  
Jimmy John's, Headquarters  
JL Clark  
Joliet Central High School  
Jonathan Wesley Inc.  
JPMorgan Chase & Co.  
Kane County Sheriff's Office  
Kellen Company  
Kellogg Company  
Kelso-Burnett  
Keystone Aniline  
Kirkland & Ellis LLP  
Klein Hall CPAs  
Knox County Schools

Komarek Elementary School  
LaSalle Network  
Launch Consulting  
Launch Digital Marketing  
Lauterbach & Amen (LLP)  
Lean Teen Program  
Level 10 LLC  
Lever Interactive  
Lewis University  
Life Time Fitness  
Lincoln International  
Lincoln School  
Lions Club International Foundation  
Little City  
Little Friends  
Live Nation Entertainment  
LLT Creative Group  
Lund Zan Dyke Incorporated  
Magnitech Solutions  
Mann Financial Group  
Mario Tricocci  
Marquette Bank  
Marsh McLennan  
Martin Advertising / Retail Group  
Maryville Academy  
McCain Foods USA  
McCarty Elementary  
McCrone Associates  
McGladrey LLP  
Media Audits International  
Medical Staffing Network  
Midtronics  
Millennium Pain Center  
Molex Incorporated  
Molto Properties  
MSDSonline  
Multi Packaging Solutions  
Multivision inc  
Mulyk, Laho & Mack, LLC  
My Gym  
Nalco  
Nanophase Technologies Corporation  
Naperbrook Golf Course  
NCTV17  
Ndevix  
Neil Armstrong Elementary  
Network Services Company  
Neuqua Valley High School  
News Enterprise  
Nolan Entertainment  
North Central College  
North Park University  
Northbrook School District 27  
Northern Illinois Academy  
Northern Trust  
Northwestern Campus Center

Northwestern Medicine  
Northwestern Mutual  
NTA  
Nutrivo  
Omally Hanson Communications  
One Hope United  
Opus Fund Services  
ORA  
Ottawa Savings Bank  
Panasonic Factory Solutions  
Paylocity  
Penske Truck Leasing  
Peoria Juvenile Detention Center  
Pioneer elementary school  
Plano East High School  
Plano High School  
Plano Synergy  
PNC Bank  
Presence Pine View Care Center  
Primo Management Group  
Q1 Productions  
Q2 Software  
Q-Bqq  
Quill.com  
Quincy Public School  
Raging Waves Waterpark  
Randstad Technologies US  
Ravina Festival  
Rawhide Boys Ranch  
Reflection Software  
Rex Radiator Welding and Distribution  
Right Fit  
Robert Half Tech  
Rosenthal Collings Group  
Rush Copley Healthplex  
Rustillion Corporation  
SABIC Polymershapes  
Sauk Elementary School  
Schaumburg District 54  
Schaumburg School District 54  
School District #202  
Sears Holdings Corporation  
Seyfarth Shaw LLP  
Shannon Gail Weddings  
Sheraton Macau  
Sikich  
Skyline Design  
Southwest Orthopedics  
SpeedPro Imaging DuPage  
Sportdecals Inc.  
St. Mary's School

Staff Mark  
Starbucks Coffee Company  
State Farm Insurance  
Stats LLC  
Stephan Company  
Target  
Teach for America  
Team Champion  
Team One Volleyball Club  
TeleSUR  
The Connection  
The Exercise Coach  
The German American Chamber of Commerce  
The Morton Arboretum  
The Other Theater Company  
Thomson Reuters  
Timberline Knolls Residential Treatment Center  
TMC: A division of CH Robinson  
Total Spectrum Applied Behavioral Services  
Travelers Insurance  
Trust Mart  
TruVue  
U.S. Army  
U.S. Food and Drug Administration  
U.S. Navy  
UI Health  
Uline  
Ulta Beauty  
United Airlines  
United States Liability Insurance Group  
University of Wisconsin Eau Claire  
US Bank SBA Division  
USDTL  
Valeo Academy  
Valspar  
Video Jet  
VividSeats  
VMW  
W.W. Grainger  
Walgreens  
Walt Disney World  
Westmont Yard  
Wheaton North High School  
Wilson Creek Elementary School  
Winston Churchill Elementary  
World Relief Aurora  
Xsport Fitness  
YMCA: Safe n' Sound  
Ziebell  
Zomato

## List of Internship sites 2015 class engaged with during their college experience

2n1 Media  
360 Youth Services- Male Transitional Housing Program  
3WON LLC  
Acceleration Sports Performance  
Ace Hardware Corporation  
Addison School District  
Addison Trail Middle School  
Advanced Technology Services  
Advocate Healthcare  
A.J. Antunes and Company  
All-Tech Decorating  
American Theater Company  
ANAD  
Argonne National Laboratory  
Arthur J. Gallagher & Co.  
Athletico Physical Therapy  
ATI Physical Therapy  
Aurora University  
B96  
Batavia Police Department  
Benet Academy  
Big Brothers Big Sisters of America  
Blazing Prairie Stars  
BlueEarth Deconstruction  
Bluestem Communications  
Both Ends Burning  
Bulls Sox Academy  
Burhof Engineering  
Cadence Fitness and Health Center  
Cadence Physician Group  
Cambridg  
Cantigny Golf Course  
CBS Radio  
Center for Discovery  
CEPPA  
Chicago Bears  
Chicago History Museum  
Chicago Lawyers Union  
Chicago Red Stars  
Chicago Shakespeare Theater  
Child Research Triangle  
CIS Onsite  
City of Yorkville  
College of DuPage  
Community Christian Church  
Community United Methodist Church  
Cook County Forest Preserve  
Coriant  
Council for American Islamic Relations  
Cozy Cat Press  
Davis Community Track and Field Club  
Davis Speed Center  
Deloitte  
DeVry Education Group  
Dignity Network  
District 45  
Downtown Naperville Alliance  
DuPage Children's Museum  
DuPage United  
Edmonds  
Edward Health and Fitness Center  
Edward Hospital-Cardiopulmonary Rehabilitation  
WDDB radio  
Elmhurst Art Museum  
Emerging Asia group  
English Language Institute  
Enterprise Rent-A-Car  
Entertainment Cruises  
Esplanade Fitness Center  
Expansion Marketing  
Explosive Speed Gym and Edward Fitness Center  
Extreme Speed  
First Folio Theater  
Fly High Gymnastics  
GameDay USA  
Gaskill Creative  
Giant Steps  
Ginsberg Jacobs  
Glenbard West High School  
Gracepointe Naperville  
Grange Insurance  
Grant Thornton LLP  
Greene Valley Wastewater Facility  
H4 Fitness  
Hendrickson International  
Hölderlin Gymnasium in Germany  
Hub Group  
Ignite fitness  
Illinois Bar Association Newsletter  
Illinois State Police  
Indiana Cheer Enterprises  
ITW  
IU Health Goshen Hospital  
JJR Marketing & First Impression Interactive  
Joliet Slammers  
Joliet Area Historical Museum  
Jonathan Wesley Inc.  
Jones Lang LaSalle  
Jr/Sr scholars  
JRS Vending  
Junior/Seniors Scholar Program  
Kane County Cougars  
Kellogg Company

Kendel County Casa  
Keough & Moody  
KeylimeTie  
Klein Hall CPAs  
Kroehler YMCA  
Kutchins, Robbins, & Diamond  
LastWordOnSports.com  
Lauterbasch and Amen  
Law Offices of Lynn D. Dowd  
Lee-Chandler Enterprises  
Lemont Rockers Organization  
Lifestart Wellness  
Light Opera Works  
Little Friends  
Lowe and Liebich Psychology Associates  
Ludimpex  
Lurie Children's Hospital  
McCain Foods USA  
McCrone Microscopes and Accessories  
Michael R. Trauscht CPA P.C.  
Michigan Environmental Action Council  
Molex Incorporated  
Monarch Landing  
Morgali Film  
Morton Arboretum  
MPG Fitness  
MSDSonline  
Mueller & Co, CPA  
Museum of Contemporary Art Chicago  
Nanophase Technologies  
Naper Clinical  
Naperville Central High School  
Naperville Community TV (NCTV17)  
Naperville Convention Visitor's Bureau  
Naperville Police Department  
Naperville School District 203  
Navistar  
New Directions Clinical Therapy  
Nichols Marine  
Nielsen Company  
Nolan Entertainment  
North Central College-Admissions  
North Central College-Business Office  
North Central College-Business Operations  
North Central College-Office of Marketing  
Communications  
North Central College-Office of Sustainability  
North Central College-Wrestling Team  
North South Capital  
North Suburban Physical Therapy  
Northrop Grumman  
Northwestern Mutual  
Northwestern University Athletic Training  
Oakbrook Bracket and Fitness Club  
Oakbrook Fitness  
Olenick & Associates

O'Malley and Kwit  
Oriental Institute  
Palms Health and Fitness  
Palos Health and Fitness Center  
Panasonic Factory Solutions  
Paramount Theater  
Passage Technology  
Penske  
Peter Roskham's Congressional Office  
Phigenics, LLP  
Physical Fusion Training Center  
Picoso Music  
Players Indoor  
Porchlight Music Theatre  
Powershares  
ProActive Kids  
Pulse Financial Services  
Q-bbq  
Quantum Marketing  
R&J Banuelos Trucking Inc.  
Raging Waves Waterpark  
Reflection Software  
Regine Danielle Events & Design  
Reinhart Financial Group  
Rockford Urban Ministries  
Roush Fenway Racing  
Safe n' Sound YMCA  
SCARCE Environmental Center  
School District 308  
Scott Trade  
Sears Holdings Corporation  
Serena High School  
Seven Bridges Ice Arena  
Shedd Aquarium  
Signs by Tomorrow  
Sikich LLP  
Social Needs Ministries  
Southern Wine and Spirits  
Southwest Orthopedics  
Spikeball, Inc.  
Start Fresh Recovery  
Static Multimedia  
Stayfit  
Suburban Real Estate  
Sugar Creek Golf Course  
Summer Language Institute NCC  
Sun Chemical  
Sunrise Senior Living  
Susan Myket and Associates  
SWC Technology Partners  
Systemtek  
Tammy Duckworth Campaign  
Target  
Team Champion  
Team One Volleyball Center  
Teen Connection

The Conservation Foundation  
The Exercise Coach  
The Field Museum  
The Morton Arboretum  
The Score Radio Station  
Thomson Reuters  
TITLE Boxing Club  
Top-Pick Athletics Co.  
Toys R Us Distribution Center  
Treehouse Pediatric Therapy  
Triple Threat Mentoring  
Trustmark Insurance  
Turning Pointe Autism Foundation  
United Church Camps, Inc.  
Urban Village Church Chicago

USSSA Sports  
Victory Rehabilitation  
Virginia Polytechnic Institute and State University  
Walt Disney World  
West Chicago High School  
Wheaton College  
Wheaton Park District  
Wheaton Property Partners  
William Blair & Company  
William Fremd High School  
Willowbrook Wildlife Center  
World Relief  
WSOL, Aurora IL  
Wynn Resort Macau  
YWCA Metropolitan Chicago

## Graduate Universities and Professional Schools

Adler University (2)  
Argosy University (5)  
AT Still University  
Aurora University (3)  
Benedictine University (5)  
Boston University  
California Polytechnic State University  
California San Diego  
Carroll University  
Chicago Theological Seminary  
Colorado School of Mines  
Colorado State University  
Concordia University (IL)  
Concordia University (WI)  
DePaul University (2)  
Dominican University  
Dr. William Scholl School of Podiatry Medicine at  
Rosalind Franklin University  
Elmhurst College  
Emory University  
Illinois Institute of Technology  
University of Chicago  
Illinois State University (2)  
Indiana State University  
Indiana Tech  
Indiana University Maurer School of Law  
Indiana University South Bend  
Iowa State University (2)  
John Marshall Law School (2)  
Kent College of Law  
Lewis University

Ludwig Maximilian University, Munich, Germany  
Midwestern University (7)  
Moody Bible Institute  
National University of Health Sciences  
North Central College (22)  
North Park University  
Northern Illinois University (6)  
Northern Illinois University School of Law  
Purdue University (2)  
Roosevelt University (2)  
Rosalind Franklin University (4)  
Rush University (5)  
Southern Illinois University  
The Chicago School of Professional Psychology  
The Ohio State University  
University of Illinois at Chicago (3)  
University of Illinois at Chicago College of  
Pharmacy  
University of Illinois Urbana-Champaign (3)  
University of Iowa  
University of Leicester  
University of Michigan, Ross Business School  
University of Missouri, Columbia  
University of Missouri, St Louis  
University of Oklahoma  
University of South Carolina- Columbia  
University of Texas, Arlington  
University of Texas, Austin  
University of Utah  
University of York  
Wesley Theological Seminary

**Graduates were accepted into the following institutions but we were unable to verify school of attendance:**

Boston College  
Buffalo State  
Central European University  
Colorado State University  
Governor's State University  
James Madison University  
New York University  
Seton Hall  
Syracuse University  
University of Delaware  
University of Georgia  
University of Kentucky: Patterson School of Diplomacy  
University of Minnesota  
University of New Hampshire  
Vanderbilt University

## **Degree and Program of Study**

Civil and Environmental Engineering, MS	MS in Occupational Therapy (3)
Civil Engineering (2)	MS Mechanical Engineering
Conservation Biology	MS Medical Laboratory Science
Counseling and Human Services	MS Wildlife Ecology
Creative Writing MFA	MSN (Nursing) (3)
D.P.M. (Podiatric)	MSW (Social Work) (3)
DDS	PhD in Industrial Organizational Psychology
Doctor of Chiropractic	PhD in Mathematics
Doctor of Clinical Sociology	PhD in Music Theory
Doctor of Pharmacy	PhD in Physics (2)
Doctor of Physical Therapy (3)	PhD in Psychology (2)
JD (6)	PhD in Quantitative Psychology
MA in Behavioral Health	PsyD in Clinical Psychology (2)
MA in Clinical Counseling (2)	
MA in Clinical Psychology	
MA in Community Counseling	
MA in Higher Education and Student Affairs	
MA in Jazz Studies	
MA in Leadership (2)	
MA in Mental Health	
MA in Political Science	
MA in Strategic Relations	
Master's in Accounting and Finance	
Master's in Clinical Exercise Physiology	
Master's in Divinity (4)	
Master's in Physician Assistant Studies	
Master's in Art Conservation	
Masters of Accountancy (5)	
Masters of Applied Exercise Science	
MBA (18)	
MLD Higher Ed Leadership Studies (5)	
MLD Sports	
MLIS (Library and Information Science)	
MM Opera Performance	
MPA (Public Administration)	