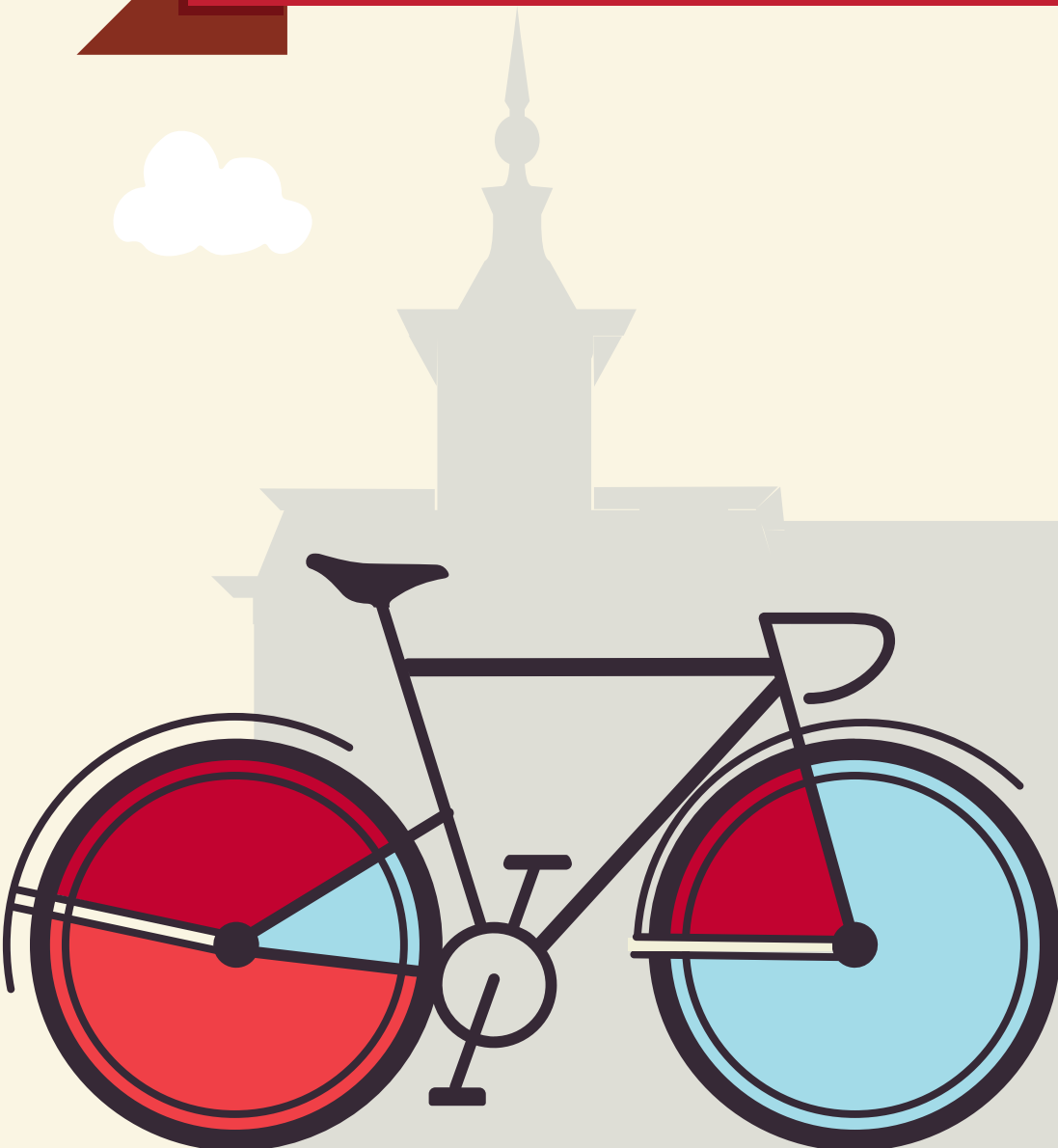


# YOUR GUIDE TO TRANSFERRING TO NORTH CENTRAL COLLEGE

WILLIAM RAINEY HARPER COLLEGE





This guide is based on the 2024-2025 Harper College catalog, and the 2025-2026 North Central College catalog. North Central College reserves the right to alter any information listed in this guide, including the transferability of courses, without notice or obligation. For assistance with this guide, please call the Office of Admission at (630) 637-5800 or email at [admissions@noctrl.edu](mailto:admissions@noctrl.edu).

How to use this guide: This course substitution guide is designed to help you select courses at Harper College if you plan to transfer to North Central College. Working with your HC advisor and NCC transfer admission counselor, refer to this guide to determine courses that meet North Central College requirements in our general education curriculum, academic major and minor requirements, and electives. Your NCC counselor can also provide a major planning worksheet. Listed below is a sample from this guide:

HC Course Numbers, Titles, Credit					NCC Equivalent Course Numbers & Credit			NCC General Education Codes			Important Information about courses
DEPT	NUM	COURSE TITLE	CREDIT	IAI EQUIV	DEPT	NUM	CREDIT	GENERAL EDUCATION			COMMENTS
ANT	201	Introductory Physical Anthropology	3	S1 902	ANTH	Elective	3	SOC			ANT 201 + ANT 210 = ANTH 165
ANT	202	Cultural Anthropology	3	S1 901N	ANTH	Elective	3	SOC	GLO		

The Cardinal Directions general education curriculum at North Central College is as follows, along with the general education codes you will find in this guide. Please note the column to the far right which indicates which of these requirements may be waived (or required) based on the level of education you achieve prior to transferring. For additional details, please reference the NC catalog: <http://catalog.noctrl.edu/content.php?catoid=26&navoid=2582>.

## CARDINAL DIRECTIONS CURRICULUM MAP

Requirement	General Education Code	Credit	Comments
<b>Composition</b>	COMP	4 credits	Met with A.A. or A.S. degree
<b>Writing Intensive</b>	WRI	4 credits	Met with A.A. or A.S. degree
<b>Public Speaking</b>	COM	4 credits	Met with A.A. or A.S. degree
<b>Arts</b>	ART	4 credits	Met with A.A. or A.S. degree
<b>Humanities</b>	HUM	4 credits	Met with A.A. or A.S. degree
<b>Social Science</b>	SOC	4 credits	Met with A.A. or A.S. degree
<b>Science</b>	SCI	4 credits	Met with A.A. or A.S. degree
<b>Quantitative Analysis</b>	QUA	4 credits	Met with A.A. or A.S. degree
<b>Power Structures or Global Understanding</b>	POW or GLO	4 credits	Met with A.A. or A.S. degree GLO may be met with Study Abroad at NCC
<b>Ethical Dimensions</b>	ETH	4 credits	Met with A.A. or A.S. degree
<b>Well Being</b>	WEL	2 credits	Met with A.A. or A.S. degree
<b>Experiential (One of the following):</b>	-Community Engaged Learning -Study Away/Study Abroad -Student Research -CARD 400 – Senior Seminar: Liberal Arts and Problems of Today	2 credits	Met with A.A. or A.S. degree
<b>Career Readiness: Preparation and Experiential*</b>	CARD 250 – Career Preparation CARD 300 – Career Experiential	4 credits total	*Must be taken at NC

\*An equivalent 3-credit transfer course may be used to fulfill a General Education requirement.

•One course may fulfill multiple requirements.

•College Transfer Credits are courses taken at a college or university after graduating high school and not earned through AP, IB, or CLEP.

•Only 64 semester hours (96 quarter hours) may transfer from a 2-yr college. Developmental courses (under 100-level) do not transfer.

•Requirements met through an eligible A.A. or A.S. degree may also be met with an eligible A.A.S. degree only if applied to the B.A.S. degree.

•Students with less than 28 transferable hours will need to complete CARD 110, a 1-credit transition course.

**COURSE SUBSTITUTIONS FOR STUDENTS TRANSFERRING FROM HARPER COLLEGE TO NORTH CENTRAL COLLEGE**

*Based on the 2024-2025 Harper College Catalog and the 2025-2026 North Central College Catalog*

Harper College Courses				NCC Courses			NCC General Education and Comments			
DEPT	NUM	COURSE TITLE	SEM CRED	IAI EQUIV	Dept	Number	Credit	GENERAL EDUCATION		COMMENT
ACC	100	Introductory Accounting	3		No	Credit	0			
ACC	101	Introduction to Financial Accounting	4		ACCT	201	4			
ACC	102	Introduction to Managerial Accounting	3		ACCT	202	3			
ACC	112	Quickbooks	2		No	Credit	0			
ACC	155	Payroll Accounting	4		No	Credit	0			
ACC	201	Intermediate Accounting I	3		ACCT	317	0			May not use to fulfill 300-level req in major/minor
ACC	202	Intermediate Accounting II	3		ACCT	318	0			May not use to fulfill 300-level req in major/minor
ACC	203	Cost Accounting	3		ACCT	307	3			May not use to fulfill 300-level req in major/minor
ACC	211	Business Law I	3		BUSN	205	3	ETH		Only one of ACC 211 or ACC 213 transfers
ACC	213	Legal Environment of Business	3		BUSN	205	3	ETH		Only one of ACC 211 or ACC 213 transfers
ACC	216	Employment Law	3		BUSN	Elective	3			
ACC	250	Individual Tax Accounting	3		ACCT	Elective	3			
ACC	251	Business Tax Accounting	3		ACCT	Elective	3			
ACC	253	Advanced Accounting I	3		No	Credit	0			
ACC	254	Auditing	3		ACCT	Elective	3			
ACC	260	Financial Research	1		No	Credit	0			
ACC	261	Tax Research	1		No	Credit	0			
ACC	265	Fraud Examination	3		ACCT	471	3			May not use to fulfill 400-level req in major/minor
ACC	280	CPA Review Course - BEC	1		No	Credit	0			
ACC	281	CPA Review Course - AUD	1		No	Credit	0			
ACC	282	CPA Review Course - FAR	1		No	Credit	0			
ACC	283	CPA Review Course - REG	1		No	Credit	0			
ACC	295	Topics in Accounting	1-4			Elective				Evaluated individually
ANT	101	Introductory Anthropology	3	S1 900N	ANTH	Elective	3	SOC		
ANT	201									
ANT	202	Cultural Anthropology	3	S1 901N	ANTH	Elective	3	SOC	GLO	
ANT	205	Physical Anthropology	3	S1 902	ANTH	Elective	3	SOC		ANT 205 + ANT 206 = ANTH 165
ANT	206	Archeology	3	S1 903	ANTH	Elective	3	SOC		ANT 205 + ANT 206 = ANTH 165
ANT	210									
ANT	215	Introduction Forensic Anthropology	3		ANTH	332	3			May not use to fulfill 300-level req in major/minor
ANT	220	Topics in Anthropology	1-6		ANTH	Elective	0			Evaluated individually
ANT	250									
ARC	125	Chicago's Architectural History	3		ARTD	Elective	3	ART		
ARC	223	History of Architecture	3		ARTH	Elective	3	ART		
ARC		All Other Architectural Studies Courses			No	Credit	0			
ART	100	Art Seminar	1		No	Credit	0			
ART	105	Intro to Visual Art	3	F2 900	ARTD	100	3	ART		
ART	110	Drawing I	3		ARTD	120	3	ART		
ART	111	Drawing II	3		ARTD	220	3			
ART	114	Introduction to Film	3	F2 908	FILM	100	3	ART		
ART	121	Design I	3		ARTD	107	3			
ART	122	Design II	3		ARTD	160	3			
ART	130	Ancient and Medieval Art	3	F2 901	ARTH	100	3	ART	GLO	
ART	131	Gothic Through Romantic Art	3	F2 902	ARTH	102	3	ART	GLO	
ART	132	Modern and Contemporary Art	3	F2 902	ARTH	Elective	3	ART	GLO	
ART	133	Non-Western Art	3	F2 903N	ARTH	Elective	3	ART	GLO	
ART	206	Printmaking Studio	3		ARTD	210	3			A maximum 6 hours transfers
ART	225	Figure Drawing Studio	3		ARTD	225	3			A maximum 6 hours transfers
ART	241	Digital Art and Animation Studio	3		ARTD	Elective	3			
ART	250	Fine Art Photography	3		ARTD	275	3			Only one of ART 250 or GRA 131 transfer; Max 6 hours
ART	261	Painting Studio	3		ARTD	130	3	ART		A maximum 6 hours transfers
ART	280	Topics in Art History	1-6			Elective				Evaluated individually: A maximum 6 hours transfers

**COURSE SUBSTITUTIONS FOR STUDENTS TRANSFERRING FROM HARPER COLLEGE TO NORTH CENTRAL COLLEGE**

*Based on the 2024-2025 Harper College Catalog and the 2025-2026 North Central College Catalog*

Harper College Courses				NCC Courses			NCC General Education and Comments			
DEPT	NUM	COURSE TITLE	SEM CRED	IAI EQUIV	Dept	Number	Credit	GENERAL EDUCATION		COMMENT
ART	281	Topics in Studio Art	3			Elective				Evaluated individually: A maximum 6 hours transfers
ART	291	Ceramics Studio	3		ARTD	150	3	ART		A maximum 6 hours transfers
ART	296	Sculpture Studio	3		ARTD	260	3	ART		A maximum 6 hours transfers
AST	100	Astronomy Survey	3	P1 906	PHYS	110	3	SCI		
AST	112	The Solar System	4	P1 906L	PHYS	Elective	4	SCI		
AST	115	Stars and Galaxies	4	P1 906L	PHYS	Elective	4	SCI		
BIO	101	Biology Survey	3	L1 900	BIOL	Elective	3	SCI		
BIO	103	Humans and the Environment	3	L1 905	BIOL	Elective	3	SCI		
BIO	104	Environmental Laboratory Biology	4	L1 905L	BIOL	106	4	SCI		
BIO	105	Heredity, Evolution and Society	3	L1 906	BIOL	Elective	3	SCI		
BIO	110	Introduction to Biology and Society	4	L1 910L	BIOL	Elective	4	SCI		
BIO	115	Fundamentals of Cellular Biology	4	L1 900L	BIOL	Elective	4	SCI		
BIO	116	Fundamentals of Organismal Biology	4	L1 900L	BIOL	Elective	4	SCI		
BIO	120	Plants and Society	4	L1 901L	BIOL	Elective	4	SCI		
BIO	130									
BIO	135	Introduction Human Anatomy and Physiology	4		BIOL	Elective	4			
BIO	136	Introduction to Human Disease	3		BIOL	Elective	3			
BIO	140	Animals and Society	4	L1 902L	BIOL	Elective	4	SCI		
BIO	150	Field Biology	4		BIOL	Elective	4			
BIO	160	Human Anatomy	4		BIOL	201	4			
BIO	161	Human Physiology	4		BIOL	202	4			
BIO	230	Microbiology	4		BIOL	145	4			
BIO	260	Human Anatomy	4		BIOL	201	4			
BIO	261	Human Physiology	4		BIOL	202	4			NCC BIOL 201 is not the pre-req of BIO 261 per HC
BIO	295	Independent Research in Biology I	1-3			Elective				Evaluated individually
BIO	296	Independent Research in Biology II	1-3			Elective				Evaluated individually
BIO	297	Independent Research in Biology III	1-3			Elective				Evaluated individually
CAP	201	Social Transformation Capstone	1-3		NCCC	Elective	0			Evaluated individually
CAS	105	Word Processing Software	1		No	Credit	0			
CAS	115	Spreadsheet Software	1		No	Credit	0			
CAS	125	Database Software	1		INFS	Elective	1			
CAS	135	Presentation Software	1		No	Credit	0			
CAS	160	Introduction Business Software Packages	3		No	Credit	0			
CAS	205	Advanced Word Processing Software	1		No	Credit	0			
CAS	215	Advanced Spreadsheet Software	1		No	Credit	0			
CAS	265	Advanced Business Software Packages	3		No	Credit	0			
CAS	290	Office Assistant Capstone	2		No	Credit	0			
CDV	110	Career Development	2		No	Credit	0			
CHM	100	Chemistry for The Health Sciences	4	P1 902L	CHEM	Elective	4	SCI		Only one of CHM 100, 103, 105 or 110 transfer
CHM	103	The Chemistry Connection	4	P1 903L	CHEM	100	4	SCI		Only one of CHM 100, 103, 105 or 110 transfer
CHM	105	Chemical World	4	P1 903L	CHEM	100	4	SCI		Only one of CHM 100, 103, 105 or 110 transfer
CHM	110	Fundamentals of Chemistry	4	P1 902L	CHEM	Elective	4	SCI		Only one of CHM 100, 103, 105 or 110 transfer
CHM	121	General Chemistry I	5	P1 902L	CHEM	121	5	SCI		
CHM	122	General Chemistry II	5		CHEM	122	5			
CHM	125	Organic and Biochemistry for the Health Scien	4		CHEM	Elective	4			
CHM	201	Basic Organic Chemistry	4		CHEM	Elective	4			
CHM	204	Organic Chemistry I	5		CHEM	251	5			
CHM	205	Organic Chemistry II	5		CHEM	252	5			
CHM	210	Quantitative Analysis	5		CHEM	310	5			May not use to fulfill 300-level req in major/minor
CHM	220	Biochemistry	4		BCHM	365	4			May not use to fulfill 300-level req in major/minor
CHM	295	Independent Research in Chemistry I	1-3			Elective				Evaluated individually
CHM	296	Independent Research in Chemistry II	1-3			Elective				Evaluated individually

**COURSE SUBSTITUTIONS FOR STUDENTS TRANSFERRING FROM HARPER COLLEGE TO NORTH CENTRAL COLLEGE**

*Based on the 2024-2025 Harper College Catalog and the 2025-2026 North Central College Catalog*

<i>Harper College Courses</i>											<i>NCC Courses</i>			<i>NCC General Education and Comments</i>			
DEPT	NUM	COURSE TITLE	SEM CRED	IAI EQUIV	Dept	Number	Credit	GENERAL EDUCATION			COMMENT						
CHM	297	Independent Research in Chemistry III	1-3			Elective					Evaluated individually						
CHN	101	Elementary Chinese I	4		CHNS	101	4										
CHN	102	Elementary Chinese II	4		CHNS	102	4										
CHN	201	Intermediate Chinese I	4		CHNS	201	4	HUM	GLO								
CHN	202	Intermediate Chinese II	4	H1 900	CHNS	202	4	HUM									
CHW		Community Health Worker			No	Credit	0				No credit transfers from this department						
CIS	100	Computer and Digital Literacy	3		No	Credit	0										
CIS	101	Introduction to Computer Information Systems	3		No	Credit	0										
CIS	106	Computer Logic and Programming Technology	3		INFS	Elective	3										
CIS	137	Computer Internship I	3			Elective					Evaluated individually						
CIS	143	Introduction to Database Systems	3		CSCE	Elective	3										
CIS	206	Applied Programming	4		CSCE	Elective	4										
CIS	211	IT Project Management	3		No	Credit	0										
CIS	216	Applied Object-Oriented Programming	4		CSCE	160	4										
CIS	220	Topics in Computer Information Systems	1-6			Elective					Evaluated individually						
CIS	230	Computer Programmer Internship	3			Elective					Evaluated individually						
CIS	243	Database Administration	3		No	Credit	0										
CIS	244	Database Design and Implementation	3		No	Credit	0										
CIS	245	Data Analysis	3		CSCE	Elective	3	QNT									
CNA		Certified Nursing Assistant			No	Credit	0				No credit transfers from this department						
CNB		Cannabis Science			No	Credit	0				No credit transfers from this department						
CSC	121	Computer Science I	4		CSCE	160	4				Only one of CSC 121, 122 or 214 transfer						
CSC	122	Computer Science II	4		CSCE	160	4				Only one of CSC 121, 122 or 214 transfer						
CSC	211	Introduction to C Programming and UNIX	4		CSCE	Elective	4				Consult CSCE Dept for placement						
CSC	214	Introduction to Java Programming	4		CSCE	160	4				Only one of CSC 121, 122 or 214 transfer						
CSC	216	Data Structures and Algorithm Analysis	4		CSCE	210	4										
CSC	217	Assembler Prog. and Machine Organization	4		CSCE	220	4										
DCS		Diagnostic Cardiac Sonography			No	Credit	0				No credit transfers from this department						
DHY		Dental Hygiene			No	Credit	0				No credit transfers from this department						
DIT		Dietetic Technician			No	Credit	0				No credit transfers from this department						
DIT	101																
DIV	101	Exploring Diversity in the U.S.	3		SOCI	Elective	3	SOC									
DMS		Diagnostic Medical Sonography			No	Credit	0				No credit transfers from this department						
ECE	101	Introduction to Early Childhood Education	3		NCCC	Elective	3										
ECE	102	Child Development	3		PSYC	Elective	3										
ECE	111	Infant/Toddler Programs	3		No	Credit	0										
ECE	112	Play and Assessment of the Young Child	3		No	Credit	0										
ECE	115	Principles of Early Childhood Curriculum	3		EDUC	Elective	3										
ECE	140	Family Child Care Management	3		No	Credit	0										
ECE	149	Topics in Early Childhood Education	1-3			Elective	0				Evaluated individually						
ECE	209	Language Develop. & Activities for the Young Child	3		NCCC	Elective	3										
ECE	210	Creative Activities for Young Children	3		NCCC	Elective	3										
ECE	221	Math and Science for the Young Child	3		NCCC	Elective	3										
ECE	226	Assessment and Guidance	3		No	Credit	0										
ECE	230	Movement and Rhythms for Young Child	3		NCCC	Elective	3										
ECE	235	Principles of School Age Care	3		No	Credit	0										
ECE	250	Health, Nutrition and Safety	3		HTSC	Elective	3										
ECE	252	Child-Family-Community	3		No	Credit	0										
ECE	253	Administration of Early Childhood Programs	3		No	Credit	0										
ECE	254	Interpersonal Relationships in Early Child Education	1		No	Credit	0										
ECE	290	Family Child Care Practicum	3		No	Credit	0										
ECE	291	Early Childhood Practicum I	3		No	Credit	0										

**COURSE SUBSTITUTIONS FOR STUDENTS TRANSFERRING FROM HARPER COLLEGE TO NORTH CENTRAL COLLEGE**

*Based on the 2024-2025 Harper College Catalog and the 2025-2026 North Central College Catalog*

Harper College Courses				NCC Courses			NCC General Education and Comments				
DEPT	NUM	COURSE TITLE	SEM CRED	IAI EQUIV	Dept	Number	Credit	GENERAL EDUCATION			COMMENT
ECE	292	Early Childhood Practicum II	3		No	Credit	0				
ECE	293	Early Childhood Director Practicum	3		No	Credit	0				
ECO	115	Consumer Economics	3		SBEN	210	3	WEL			
ECO	200	Introduction to Economics	3	S3 900	ECON	100	3	SOC			
ECO	210	Money and Banking	3		ECON	360	3				May not use to fulfill 300-level req in major/minor
ECO	211	Microeconomics	3	S3 902	ECON	200	3	SOC			
ECO	212	Macroeconomics	3	S3 901	ECON	205	3	SOC			
EDU	201	Introduction to Education	3		EDUC	101	3				
EDU	202	Pre-Student Teaching Clinical Experience	1		EDUC	Elective	1				Max 30 clinical hours transfer
EDU	211	Educational Psychology	3		PSYC	205	3				
EDU	219	Students With Disabilities in School	3		EDUC	230	3				
EDU	220	Diversity in School and Society	3		EDUC	Elective	3				
EDU	230	Intro Language Arts in Elem/Middle Sch Teachng	3		EDUC	Elective	3				
EDU	250	Introduction to Technology in Education	3		EDUC	235	3				
EDU	290	Topics in Education	.5-3			Elective					Evaluated individually
EDU	999	Preparing for the TAP	1-3		No	Credit	0				
EGR	100	Introduction to Engineering	1		ENGR	100	1				
EGR	105	Problem-Solving with MATLAB and EXCEL	1		EGR	Elective	1				
EGR	110	Intro to Electrical & Computer Engineering	4		ELEC	150	4				
EGR	120	Engineering Graphics I (CAD)	4		ENGR	Elective	4				
EGR	210	Analytical Mechanics - Statics	3		PHYS	211	3				
EGR	211	Analytical Mechanics - Dynamics	3		ENGR	Elective	3				
EGR	212	Mechanics of Solids	3		PHYS	251	3				
EGR	240	Thermodynamics	3		PHYS	340	3				May not use to fulfill 300-level req in major/minor
EGR	265	Circuit Analysis	4		ELEC	250	4	SCI			
EGR	270	Introduction to Digital Systems	4		ELEC	200	4				
ELA		English Literacy Acquisition			No	Credit	0				
ELT		Electronics Engineering Technology			No	Credit	0				No credit transfers from this department
EMG		Emergency Management Systems			No	Credit	0				No credit transfers from this department
EMS		Emergency Medical Service			No	Credit	0				No credit transfers from this department
ENG		All Courses Numbered Below 100			No	Credit	0				
ENG	100	Composition	4		No	Credit	0				
ENG	101	Composition	3	C1 900	ENGL	110	3	COMP			
ENG	102	Composition	3	C1 901R	ENGL	110	3	COMP			or WRI if ENG 101 is complete
ENG	103	Technical and Report Writing	3		No	Credit	0				
ENG	130	Business Writing	3		No	Credit	0				
ENG	200	Professional Writing: Grammar and Style	3		ENGL	280	3				
ENG	201	Advanced Composition	3		ENGL	Elective	3				
ENG	220	Creative Writing	3		ENGL	210	3	ART			
ENG	221	Writing Fiction	3		ENGL	Elective	3	ART			
ENG	222	Writing Poetry	3		ENGL	Elective	3	ART			
ENG	230	Topics in English	1-3			Elective					Evaluated individually
ENT	110	Ideaship Experience	1		No	Credit	0				
ENT	154	Entrepreneurship	3		BUSN	170	3				
ENT	211	Entrepreneurship Internship	1-3		NCCC	Elective					Evaluated individually
ENT	254	Ideashop: Product Development	3		BUSN	Elective	3				
ENT	255	Ideashop: Crowdsourcing and Financing	3		BUSN	Elective	3				
ENT	257	Ideashop: 2D and 3D Prototyping	3		NCCC	Elective	3				
ENT	258	Ideashop: Build Your Own 3D Printer	2		No	Credit	0				
ENT	285	Ideashop Topics	.5-3		NCCC	Elective	0				Evaluated Individually
ESC	100	Rocks and Minerals Survey	3	P1 907	SCIE	Elective	3	SCI			
ESC	101	Earth Science Survey	3		ENVI	141	3				

**COURSE SUBSTITUTIONS FOR STUDENTS TRANSFERRING FROM HARPER COLLEGE TO NORTH CENTRAL COLLEGE**

*Based on the 2024-2025 Harper College Catalog and the 2025-2026 North Central College Catalog*

Harper College Courses				NCC Courses			NCC General Education and Comments			
DEPT	NUM	COURSE TITLE	SEM CRED	IAI EQUIV	Dept	Number	Credit	GENERAL EDUCATION		COMMENT
ESC	110	Exploring the Earth and Universe	4	P1 905	PHYS	Elective	4	SCI		
ESC	111	Physical Geology	4	P1 907L	SCIE	Elective	4	SCI		
ESC	112	Dinosaurs, Fossils and Planet Earth	4	P1 907L	SCIE	Elective	4	SCI		
ESC	113	Environmental Geology	4	P1 908L	SCIE	Elective	4	SCI		
ESC	121	Introduction to Meteorology	4	P1 905L	SCIE	Elective	4	SCI		
ESL		English as a Second Language			No	Credit	0			No credit transfers from this department
ESP		English for Special Purposes			No	Credit	0			No credit transfers from this department
FAS	110	Costume History	3		ARTH	Elective	3	ART		
FAS		All Other Fashion Design Courses			No	Credit	0			No credit transfers from this department
FIN	101	Financial Institution Operations	3		SBEN	Elective	3			
FIN	200	Investment Management/Personal Finance	3		SBEN	Elective	3			
FIN	215	Financial Statements Interpretation and Analysis	3		SBEN	Elective	3			
FIN	225	International Finance	3		FINA	385	0			May not use to fulfill 300-level req in major/minor
FIS		Fire Science			No	Credit	0			No credit transfers from this department
FRN	101	Elementary French I	4		FREN	101	4			
FRN	102	Elementary French II	4		FREN	102	4			
FRN	201	Intermediate French I	4		FREN	201	4			
FRN	202	Intermediate French II	4	H1 900	FREN	202	4	HUM		
FRN	205	French Conversation	3		FREN	Elective	3			
FRN	210	Introduction to French Literature	3	H3 917	FREN	Elective	3	HUM		
FSM		Hospitality Management			No	Credit	0			No credit transfers from this department
FYE	101									
FYS	101	First Year Seminar	1-3		No	Credit	0			
GEG	100	Cultural Geography	3	S4 900N	SOCI	Elective	3	SOC		Or HST elective
GEG	101	World Regional Geography	3	S4 900N	SOCI	Elective	3	SOC		
GEG	103	The Developing World	3	S4 902N	SOCI	Elective	3	SOC		Or HST elective
GEG	104	The Developed World	3	S4 901	SOCI	Elective	3	SOC		Or HST elective
GEG	111	Physical Geography	3	P1 909	SCIE	Elective	3	SCI		Or HST elective
GEG	112	Physical Geography Laboratory	1	P1 909L	SCIE	Elective	1	SCI		Lab for GEG 111; No credit if GEG 111 not completed
GEG	150	Introduction to Geospatial Technologies	3		ENVI	Elective	3			
GEG	151	Geospatial Data Acquisition and Management	3		ENVI	Elective	3			
GEG	152	Spatial Analysis	3		ENVI	260	3			
GEG	153	Applied Geospatial Technologies	3		ENVI	Elective	3			
GEG	155	Geographic Info Systems (GIS) Internship	1-3			Elective				Evaluated individually
GEG	160	Drone Pilot Ground School	1		No	Credit	0			
GEG	161	Introduction to Small Unmanned Aerial Systems	3		No	Credit	0			
GEG	162	sUAS Data Acquisition & Analysis	3		No	Credit	0			
GEG	250	Introduction to Remote Sensing	3		ENVI	Elective	3			
GEO	101	Physical Geology	4		SCIE	Elective	4	SCI		
GER	101	Elementary German I	4		GRMN	101	4			
GER	102	Elementary German II	4		GRMN	102	4			
GER	201	Intermediate German I	4		GRMN	201	4			
GER	202	Intermediate German II	4	H1 900	GRMN	202	4	HUM	GLO	
GER	205	German Conversation	3		GRMN	Elective	3			
GER	210	Introduction to German Literature	3	H3 917	GRMN	Elective	3	HUM		
GER	230	German Civilization and Culture	3		NCCC	Elective	3	HUM		
GRA	101	Introduction to Graphic Arts Technology	3		No	Credit	0			
GRA	102	Graphic Arts Desktop Publishing	3		ARTD	Elective	3			
GRA	103	Digital Imaging I	3		ARTD	Elective	3			
GRA	105	Color Management	3		ARTD	Elective	3			
GRA	111	Press Operations	3		No	Credit	0			
GRA	112	Digital Illustration I	3		ARTD	Elective	3			

**COURSE SUBSTITUTIONS FOR STUDENTS TRANSFERRING FROM HARPER COLLEGE TO NORTH CENTRAL COLLEGE**

*Based on the 2024-2025 Harper College Catalog and the 2025-2026 North Central College Catalog*

Harper College Courses				NCC Courses			NCC General Education and Comments				
DEPT	NUM	COURSE TITLE	SEM CRED	IAI EQUIV	Dept	Number	Credit	GENERAL EDUCATION			COMMENT
GRA	113	Digital Imaging II	3		INFS	Elective	3				
GRA	120	Graphic Design I	3		ARTD	140	3				
GRA	130	Introduction to Photography	2		ARTD	Elective	2				
GRA	131	Digital Photography I	3		ARTD	275	3				Only one of ART 250 or GRA 131 transfers
GRA	145	Wordpress and Mobile Technologies	3		No	Credit	0				
GRA	202	Advanced Color Management	3		No	Credit	0				
GRA	211	Project Management, Scheduling, Estimating	3		No	Credit	0				
GRA	213	Packaging, Finishing, and Distribution	3		No	Credit	0				
GRA	214	Digital Illustration II	3		ARTD	Elective	3				
GRA	220	Graphic Design II	3		ARTD	342	3				May not use to fulfill 300-level req in major/minor
GRA	221	Graphic Portfolio Design	2		No	Credit	0				
GRA	222	Package Design	3		No	Credit	0				
GRA	229	Page Layout	3		No	Credit	0				
GRA	230	Prepress Production	3		No	Credit	0				
GRA	231	Variable Data Technologies	3		No	Credit	0				
GRA	232	Digital Photography II	3		ARTD	Elective	3				
GRA	299	Digital Photography Capstone	3			Elective					Evaluated individually
HCB		Harper College for Business			No	Credit	0				No credit transfers from this department
HED	200	Health	3		HTSC	200	3	WEL			
HED	201	Drugs in Our Culture	3		HTSC	Elective	3				
HED	202	Human Sexuality	3		PSYC	Elective	3				Only one of HED 202 or PSY 175 transfers
HED	203	Community Health	3		HTSC	230	3				
HED	204	Women's Health	3		HTSC	Elective	3				
HED	206	Health and the Public	3		HTSC	Elective	3				
HED	250	Topics in Health Education	1-3			Elective					Evaluated Individually
HIT		Health Information Technology			No	Credit	0				No credit transfers from this department
HSC	112	Medical Terminology	2		HTSC	156	2				
HSC		All Other Health Science Core Courses			No	Credit	0				
HSE		High School Equivalency			No	Credit	0				No credit transfers from this department
HST	105	Great Ideas of World Civilizations	3	H9 900	NCCC	Elective	3	HUM			Only one of HST 105 or HUM 105 transfers
HST	111	The American Experience to 1877	3	S2 900	HIST	Elective	3	SOC	GLO	POW	HST 111 + HST 219 = HIST 222
HST	112	The American Experience Since 1877	3	S2 901	HIST	Elective	3	SOC	GLO	POW	HST 112 + HST 219 = HIST 224
HST	121	History of Latin America	3	S2 920N	HIST	175	3	SOC			
HST	141	History of West Civilization to 1650	4	S2 902	HIST	101	4	HUM			
HST	142	History of West Civilization Since 1650	4	S2 903	HIST	102	4	HUM	GLO		
HST	151	History England Norman Conquest to 1600	3		HIST	Elective	3	SOC			
HST	152	History of England 1600 to Present	3		HIST	Elective	3	SOC			
HST	153	British Culture & Society	3		HIST	Elective	3	SOC			
HST	202	Topics in History	1-3			Elective					Evaluated individually
HST	210	Women - the American Experience	3		HIST	242	3				
HST	212	Recent American History, 1945-Present	3		HIST	Elective	3	HUM	ETH	POW	
HST	214	African-American History	3		HIST	112	3				
HST	219	Illinois and Local History	3		HIST	Elective	3	SOC			HST111+219=HIST222 or HST112+219=HIST224
HST	231	History of the Middle East to 1453	3	S2 920N	HIST	Elective	3	SOC			
HST	232	History of the Middle East 1453 to the Present	3	S2 920N	HIST	180	3	SOC	ETH	GLO	
HST	241	History of China: Earliest time - Ming Dynasty	3	S2 920N	HIST	Elective	3	HUM	GLO		HST 241 + HST 242 = HIST 260
HST	242	Hist. of China: From the Ching Dynasty - Present	3	S2 920N	HIST	Elective	3	HUM	GLO		HST 241 + HST 242 = HIST 260
HST	243	The Far East in the Modern World	3	S2 920N	HIST	165	3	HUM	GLO		
HST	245	The World Since 1945	3	SN 913N	HIST	Elective	3	SOC			
HST	261	American Civil War 1848-1865	3		HIST	Elective	3	SOC			
HST	270	History of Rome	3		HIST	Elective	3	SOC			
HST	281	World War I	3		HIST	Elective	3	SOC	ETH	GLO	



**COURSE SUBSTITUTIONS FOR STUDENTS TRANSFERRING FROM HARPER COLLEGE TO NORTH CENTRAL COLLEGE**

*Based on the 2024-2025 Harper College Catalog and the 2025-2026 North Central College Catalog*

Harper College Courses			NCC Courses			NCC General Education and Comments					
DEPT	NUM	COURSE TITLE	SEM CRED	IAI EQUIV	Dept	Number	Credit	GENERAL EDUCATION			COMMENT
HST	282	World War II	3		HIST	Elective	3	SOC	ETH	GLO	
HUM	101	Ancient Through the Medieval West	3	H2 902	NCCC	Elective	3	HUM			
HUM	102	Renaissance Through the Modern West	3	H2 903	NCCC	Elective	3	HUM			
HUM	104	Introduction to Middle Eastern Civilizations	3	HF 904N	MENA	Elective	3	HUM			
HUM	105	Great Ideas of World Civilizations	3	H9 900N	NCCC	Elective	3	HUM			Only one of HST 105 or HUM 105 transfers
HUM	106	The Cultures of Asia	3	HF 904N	EAST	Elective	3	HUM			
HUM	107	The Cultures of Africa	3	HF 904N	NCCC	Elective	3	HUM			
HUM	110	Women and Creativity	3	H2 907D	GSST	Elective	3	HUM			
HUM	115	International & Regional Studies in Humanities	1-4		NCCC	Elective					Evaluated individually
HUM	120	Classical Mythology	3	H9 901	CLSS	250	3	HUM			
HUM	125	World Mythology	3	H9 901	NCCC	Elective	3	HUM			
HVA		Heating, Ventilation, A/C, Refrigeration			No	Credit	0				No credit transfers from this department
IDS	290	Independent Study	1-4			Elective					Evaluated individually
IND		Interior Design			No	Credit	0				No credit transfers from this department
INS		Insurance			No	Credit	0				
JPN	101	Elementary Japanese I	4		JAPN	101	4				
JPN	102	Elementary Japanese II	4		JAPN	102	4				
JPN	201	Intermediate Japanese I	4		JAPN	201	4	HUM			
JPN	202	Intermediate Japanese II	4	H1 900	JAPN	202	4	HUM	SOC		
JPN	205	Intensive Oral Practice	3		JAPN	Elective	3				
KIN	100	Physical Fitness I	1		KINE	Activity	1				A maximum 8 hours of KINE activity transfer
KIN	101	Physical Fitness II	1		KINE	Activity	1				A maximum 8 hours of KINE activity transfer
KIN	102	Cardio Kickboxing	.5		KINE	Activity	.5				A maximum 8 hours of KINE activity transfer
KIN	103	Exercise Cycling	.5		KINE	Activity	.5				A maximum 8 hours of KINE activity transfer
KIN	106	Pilates	1		KINE	Activity	1				A maximum 8 hours of KINE activity transfer
KIN	107	Yoga I	1		KINE	Activity	1				A maximum 8 hours of KINE activity transfer
KIN	111	Basic Weight Training	1		KINE	Activity	1				A maximum 8 hours of KINE activity transfer
KIN	112	Intermediate Weight Training	1		KINE	Activity	1				A maximum 8 hours of KINE activity transfer
KIN	113	Advanced Weight Training	1		KINE	Activity	1				A maximum 8 hours of KINE activity transfer
KIN	114	Sport Performance Fitness	1		KINE	Activity	1				A maximum 8 hours of KINE activity transfer
KIN	115	Boot Camp	.5		KINE	Activity	.5				A maximum 8 hours of KINE activity transfer
KIN	139	Physical Activity Topics	.5-1			Elective	.5-1				Evaluated individually; Credit varies
KIN	140	Modern Dance	1		DNCE	Elective	1				
KIN	142	Introduction to Ballet	1		DNCE	Elective	1				
KIN	143	Jazz Dance	1		DNCE	Elective	1				
KIN	144	Hip Hop Dance	1		KINE	Activity	1				A maximum 8 hours of KINE activity transfer
KIN	162	Judo and Self Defense	1		KINE	Activity	1				A maximum 8 hours of KINE activity transfer
KIN	170	Basketball	1		KINE	Activity	1				A maximum 8 hours of KINE activity transfer
KIN	171	Volleyball	1		KINE	Activity	1				A maximum 8 hours of KINE activity transfer
KIN	172	Tennis	1		KINE	Activity	1				A maximum 8 hours of KINE activity transfer
KIN	179	Wrestling	1		KINE	Activity	1				A maximum 8 hours of KINE activity transfer
KIN	180	Fencing	1		KINE	Activity	1				A maximum 8 hours of KINE activity transfer
KIN	181	Boxing	1		KINE	Activity	1				A maximum 8 hours of KINE activity transfer
KIN	183	Baseball	1		KINE	Activity	1				A maximum 8 hours of KINE activity transfer
KIN	184	Soccer	1		KINE	Activity	1				A maximum 8 hours of KINE activity transfer
KIN	200	Introduction to the Field of Kinesiology	3		KINE	Elective	3				
KIN	201	Physical Education in Elementary School	3		KINE	Elective	3				
KIN	202	Standard First Aid and CPR	3		HTSC	100	3	WEL			
KIN	203	Wellness for Life	3		HTSC	Elective	3	WEL			
KIN	214	Exercise Technique and Instruction	2		KINE	Elective	2				
KIN	217	Teaching Territory Games	3		KINE	Elective	3				
KIN	220	Introduction to Coaching	3		KINE	Elective	3				

**COURSE SUBSTITUTIONS FOR STUDENTS TRANSFERRING FROM HARPER COLLEGE TO NORTH CENTRAL COLLEGE**

*Based on the 2024-2025 Harper College Catalog and the 2025-2026 North Central College Catalog*

Harper College Courses				NCC Courses			NCC General Education and Comments			
DEPT	NUM	COURSE TITLE	SEM CRED	IAI EQUIV	Dept	Number	Credit	GENERAL EDUCATION		COMMENT
KIN	221	Care and Prevention of Athletic Injuries	3		KINE	Elective	3			
KIN	222	Sports Officiating	2		KINE	Elective	2			
KIN	223	Sports Psychology	3		KINE	Elective	3			
KIN	224	Sociology of Sport	3		SMGT	Elective	3	SOC	POW	
KIN	225	Sport Nutrition	3		NUTR	Elective	3			Only one of KIN 225 or NTR 225 transfers
KIN	230	Exercise Science	3		KINE	Elective	3			
KIN	231	Fitness Assessment and Programming	3		EXSC	Elective	3			
KIN	234	Personal Training Practicum	3		No	Credit	0			
KIN	236	Functional Anatomy	3		KINE	247	3			
KIN	250	Topics in Kinesiology	1-3			Elective				Evaluated individually
LEJ	101	Introduction to Criminal Justice	3		SOCI	340	3	GLO		May not use to fulfill 300-level req in major/minor
LEJ	104	Corrections	3		No	Credit	0			
LEJ	107	Vice and Drug Control	3		No	Credit	0			
LEJ	116	Forensics I	3		No	Credit	0			
LEJ	135	Patrol Procedures	4		No	Credit	0			
LEJ	138	Defensive Techniques	3		No	Credit	0			
LEJ	140	Introduction to Private Security	3		No	Credit	0			
LEJ	200	Leadership and Ethics for Law Enforcement	3		No	Credit	0			
LEJ	201	Criminal Law	3		SOCI	Elective	3			
LEJ	202	Criminal Procedures	3		No	Credit	0			
LEJ	205	Juvenile Justice	3		SOCI	221	3	POW		
LEJ	210	Criminology	3		CRIM	100	3			
LEJ	214	Community Policing	3		No	Credit	0			
LEJ	216	Investigative Process	3		No	Credit	0			
LEJ	217	Forensics II	4		No	Credit	0			
LEJ	218	Forensics III	4		No	Credit	0			
LEJ	225	Crisis Intervention Communication in law Enfor	3		No	Credit	0			
LEJ	230	Organized Crime	3		SOCI	Elective	3	POW		
LEJ	240	Investigating Terrorism	3		No	Credit	0			
LEJ	281	Topics in Law Enforcement and Justice Admin.	1-6			Elective				Evaluated individually
LEJ	295	Forensics IV	3		No	Credit	0			
LEJ	299	Law Enforcement Internship	3		No	Credit	0			
LEG		Legal Studies			No	Credit				No credit transfers from this department
LIT	105	Poetry	3	H3 903	ENGL	106	3	ART		
LIT	110	Drama	3	H3 902	ENGL	108	3	ART		
LIT	112	Literature and Film	3	HF 908	FILM	100	3	ART		or FILM elective
LIT	115	Fiction	3	H3 901	ENGL	104	3	HUM		
LIT	206	World Literature to 1800	3	H3 906	ENGL	Elective	3	HUM		
LIT	207	World Literature Since 1800	3	H3 907	ENGL	Elective	3	HUM		
LIT	208	Non-Western Literature	3	H3 908N	ENGL	Elective	3	HUM		
LIT	210	Introduction to Shakespeare	3	H3 905	ENGL	302	3	HUM		May not use to fulfill 300-level req in major/minor
LIT	215	Eastern European Prose Since 1800	3		ENGL	Elective	3	HUM		
LIT	216	Science Fiction	3		ENGL	Elective	3	HUM		
LIT	217	Crime Literature	3		ENGL	Elective	3	HUM		
LIT	219	Children's Literature	3		ENGL	Elective	3	ART	ETH	
LIT	220	Japanese Literature in Translation	3	H3 909	ENGL	Elective	3	HUM		
LIT	221	American Literature - Colonial Days to Civil War	3	H3 914	ENGL	Elective	3	HUM		
LIT	222	American Literature - Civil War to Present	3	H3 915	ENGL	208	3	HUM		
LIT	223	Minority Literature in America	3	H3 910D	ENGL	332	3	HUM		May not use to fulfill 300-level req in major/minor
LIT	224	Women in Literature	3	H3 911D	ENGL	234	3	HUM		
LIT	231	English Literature to 1800	3	H3 912	ENGL	202	3	HUM		
LIT	232	English Literature 1800-1914	3	H3 913	ENGL	206	3	HUM		

**COURSE SUBSTITUTIONS FOR STUDENTS TRANSFERRING FROM HARPER COLLEGE TO NORTH CENTRAL COLLEGE**

*Based on the 2024-2025 Harper College Catalog and the 2025-2026 North Central College Catalog*

Harper College Courses				NCC Courses			NCC General Education and Comments				
DEPT	NUM	COURSE TITLE	SEM CRED	IAI EQUIV	Dept	Number	Credit	GENERAL EDUCATION			COMMENT
LIT	241	20th Century British and American Literature	3		ENGL	Elective	3	HUM			
LIT	250	Topics in Literature	1-3			Elective					Evaluated individually
LNG	105	Introduction to Language and Linguistics	3		ENGL	270	3	GLO			
LNG	205	Language and Culture	3		NCCC	Elective	3	HUM			
LNG	220	Methods of Teaching English as Second Language	3		EDUC	Elective	3				
LNG	225	Language and Health	3		No	Credit	0				
LNG	230	Second Language Assessment	3		EDUC	Elective	3				
LNG	235	Second Language Acquisition (SLA)	3		EDUC	Elective	3				
LNG	240	Introduction to Pedagogical Grammar	3		EDUC	Elective	3				
LNG	299	Teaching Engl to Speakers of Other Lang (TESOL)	1		No	Credit	0				
MCM	120	Introduction to Mass Communication	3		COMM	185	3	SOC	GLO	POW	
MCM	130	Introduction to Journalism	3		MEDI	225	3				
MCM	150	Social Media Management and Measurement	3		MEDI	Elective	3				
MCM	156	Audio Production 1	3		MEDI	262	3				
MCM	180	Applied Mass Comm/Radio Practicum	1		MEDI	Elective					A maximum of 4 hours of MCM 180 transfer
MCM	200	Film History	3	F2 909	FILM	100	ART				Or FILM Eelective
MCM	205	Multi-Platform Photojournalism	3		MEDI	Elective	3				
MCM	210	Video Editing and Video Post-Production	3		MEDI	222	3				
MCM	211	Video Production	3		MEDI	Elective	3				
MCM	212	Multi-Camera Production	3		MEDI	Elective	3				
MCM	218	Broadcast Graphics	3		MEDI	Elective	3				
MCM	233	Introduction to Public Relations	3		COMM	250	3				
MFT		Manufacturing			No	Credit	0				No credit transfers from this department
MGT	111	Introduction to Business Organization	3		SBEN	100	3	SOC	ETH	GLO	
MGT	150	Business Math	3		No	Credit	0				
MGT	154	Entrepreneurship	3		BUSN	170	3				
MGT	165	Global Business	3		BUSN	Elective	3	GLO			
MGT	204	Training and Development	3		BUSN	Elective	3				
MGT	205	Leadership	3		LEAD	Elective	3				
MGT	211	Management Internship	1-3			Elective					Evaluated individually
MGT	218	Introduction to Finance	3		BUSN	Elective	3				
MGT	265	Human Resources Management	3		MGMT	345	3				May not use to fulfill 300-level req in major/minor
MGT	266	Employee Compensation and Benefits	3		MGMT	Elective	3				
MGT	270	Principles of Management	3		MGMT	305	3				May not use to fulfill 300-level req in major/minor
MGT	274	Operations Management	3		MGMT	435	3				May not use to fulfill 300-level req in major/minor
MGT	275	Labor-Management Relations	3		MGMT	Elective	3				
MGT	276	Collective Bargaining	3		MGMT	Elective	3				
MGT	280	Organizational Behavior	3		MGMT	Elective	3				
MGT	291	Strategic Management	3		MGMT	Elective	3				
MKT	105	Sports Marketing	3		SMGT	210	3				
MKT	106	Retail Merchandising	3		No	Credit	0				
MKT	140	Principles of Professional Selling	3		MKTG	340	3				May not use to fulfill 300-level req in major/minor
MKT	145	Identify and Evaluate Prospective Customers	3		MKTG	Elective	3				
MKT	180	Strategic Communication for a Digital World	3		MKTG	Elective	3				
MKT	217	Advertising	3		MKTG	Elective	3				
MKT	242	Creating A Competitive Advantage	3		MKTG	Elective	3				
MKT	243	Social Commerce and Sales	3		MKTG	Elective	3				
MKT	245	Principles of Marketing	3		MKTG	300	3				May not use to fulfill 300-level req in major/minor
MKT	247	Consumer Buying Behavior	3		MKTG	310	3				May not use to fulfill 300-level req in major/minor
MKT	252	Internet Marketing	3		No	Credit	0				
MKT	281	Internship in Marketing	1-3			Elective					Evaluated individually
MKT	285	Topics in Marketing	.5-3			Elective					Evaluated individually

**COURSE SUBSTITUTIONS FOR STUDENTS TRANSFERRING FROM HARPER COLLEGE TO NORTH CENTRAL COLLEGE**

*Based on the 2024-2025 Harper College Catalog and the 2025-2026 North Central College Catalog*

Harper College Courses				NCC Courses			NCC General Education and Comments			
DEPT	NUM	COURSE TITLE	SEM CRED	IAI EQUIV	Dept	Number	Credit	GENERAL EDUCATION		COMMENT
MNT		Maintenance			No	Credit	0			No credit transfers from this department
MOA		Medical Office Administration			No	Credit	0			No credit transfers from this department
MTH		All Courses Numbered Below 100			No	Credit	0			
MTH	101	Quantitative Literacy	4	M1 901	MATH	120	4	QUA		
MTH	103	College Algebra	3		MATH	Elective	3			
MTH	124	Finite Math	3	M1 906	MATH	130	3	QUA		
MTH	130	Math for Elementary Teaching I	4		MATH	107	4			
MTH	131	Math for Elementary Teaching II	4	M1 903	MATH	108	4	QUA		
MTH	134	Calculus for Business and Social Sciences	4	M1 900	MATH	Elective	4	QUA		
MTH	140	Precalculus	5		MATH	140	5			
MTH	165	Elementary Statistics	4	M1 902	PSYC	250	4	QUA		Only one of MTH 225 or MTH 165 transfers
MTH	200	Calculus I	5	M1 900	MATH	151	5	QUA		
MTH	201	Calculus II	5	M1 902	MATH	152	5	QUA		
MTH	202	Calculus III	5	M1 903	MATH	253	5	QUA		
MTH	203	Linear Algebra	4		MATH	300	4			May not use to fulfill 300-level req in major/minor
MTH	212	Differential Equations	3		MATH	315	3			May not use to fulfill 300-level req in major/minor
MTH	220	Discrete Mathematics	3	M1 905	CSCE	230	3	QUA		
MTH	225	Business Statistics	4	M1 902	BUSN	265	4	QUA		Only one of MTH 225 or MTH 165 transfers
MTP		Massage Therapy			No	Credit	0			
MUS	100	Intro to Music Careers	1		No	Credit	0			
MUS	101	Fundamentals of Music Theory	3		MUSI	Elective	3			
MUS	102	Introduction to Electronic/Computer Music	3		MUSI	285	3			
MUS	103	Music Appreciation	3	F1 900	MUSI	150	3	ART		
MUS	104	Introduction to American Music	3	F1 904	MUSI	Elective	3	ART		
MUS	106	Introduction to Jazz	3	F1 905D	MUSI	Elective	3	ART		
MUS	107	Introduction to Music in Theatre	3	F1 910	MUSI	Elective	3	ART		
MUS	108	Introduction to World Music	3	F1 903N	MUSI	156	3	ART	GLO	
MUS	111	Theory of Music I	3		MUSI	101	3			
MUS	112	Theory of Music II	3		MUSI	102	3			
MUS	115	Aural Skills I	1		MUSI	Elective	1			
MUS	116	Aural Skills II	1		MUSI	108	1			
MUS	120	Introduction to Music Literature	3	F1 901	MUSI	258	3	HUM		
MUS	130	Choir	1		MUEN	101	1			
MUS	136	Community Chorus	1		MUEN	101	1			
MUS	140	Band	1		MUEN	113	1			
MUS	145	Ensembles	1		MUEN	Elective	1			
MUS	150	Orchestra	1		MUEN	Elective	1			
MUS	165	Class Piano I	2		MUSI	160	2			
MUS	166	Class Piano II	2		MUSI	161	2			
MUS	167	Class Guitar	2		MUAL	185	2			
MUS	169	Class Voice	2		MUAL	100	2			
MUS	179	Private Lessons in Composition	2		MUAL	Elective	2			
MUS	180	Flute and Piccolo	1		MUAL	Elective	1			
MUS	181	Oboe and English Horn	1		MUAL	Elective	1			
MUS	182	Clarinets	1		MUAL	122	1			
MUS	183	Bassoon and Contra Bassoon	1		MUAL	Elective	1			
MUS	184	Saxophones	1		MUAL	124	1			
MUS	185	French Horn	1		MUAL	140	1			
MUS	186	Trumpet	1		MUAL	141	1			
MUS	187	Trombone	1		MUAL	142	1			
MUS	188	Baritone	1		MUAL	Elective	1			
MUS	189	Tuba	1		MUAL	143	1			

**COURSE SUBSTITUTIONS FOR STUDENTS TRANSFERRING FROM HARPER COLLEGE TO NORTH CENTRAL COLLEGE**

*Based on the 2024-2025 Harper College Catalog and the 2025-2026 North Central College Catalog*

Harper College Courses				NCC Courses			NCC General Education and Comments			
DEPT	NUM	COURSE TITLE	SEM CRED	IAI EQUIV	Dept	Number	Credit	GENERAL EDUCATION		COMMENT
MUS	190	Percussion	1		MUAL	160	1			
MUS	191	Violin	1		MUAL	180	1			
MUS	192	Viola	1		MUAL	181	1			
MUS	193	Cello	1		MUAL	182	1			
MUS	194	String Bass	1		MUAL	183	1			
MUS	195	Harp	1		MUAL	184	1			
MUS	196	Piano	1		MUAL	110	1			
MUS	197	Organ	1		MUAL	112	1			
MUS	198	Voice	1		MUAL	100	1			
MUS	199	Guitar	1		MUAL	185	1			
MUS	201	Fundamentals of Audio Technology	3		PHYS	105	3	SCI		
MUS	202	Recording Techniques	3		MUSI	Elective	3			
MUS	203	Mixing and Mastering Techniques	3		MUSI	Elective	3			
MUS	211	Theory of Music III	3		MUSI	201	3			
MUS	212	Theory of Music IV	3		MUSI	202	3			
MUS	215	Aural Skills III	1		MUSI	Elective	1			
MUS	216	Aural Skills IV	1		MUSI	Elective	1			
MUS	223	Instrumental Literature	3		MUSI	Elective	3			
MUS	224	Keyboard and Vocal Literature	3		MUSI	229+234	3			
MUS	261	Phonetics and Diction: Italian	2		MUSI	Elective	2			MUS 261 + MUS 262 + MUS 263 = MUSI 228
MUS	262	Phonetics and Diction: German	2		MUSI	Elective	2			MUS 261 + MUS 262 + MUS 263 = MUSI 228
MUS	263	Phonetics and Diction: French	2		MUSI	Elective	2			MUS 261 + MUS 262 + MUS 263 = MUSI 228
MUS	265	Class Piano III	2		MUSI	270	2			
MUS	266	Class Piano IV	2		MUSI	271	2			
MUS	275	Audio/Video Arts Technology Internship	1-3			Elective				Evaluated individually
MUS	280	Flute and Piccolo	2		MUAL	Elective	2			
MUS	281	Oboe and English Horn	2		MUAL	Elective	2			
MUS	282	Clarinet	2		MUAL	122	2			
MUS	283	Bassoon and Contra Basso	2		MUAL	Elective	2			
MUS	284	Saxophones	2		MUAL	124	2			
MUS	285	French Horn	2		MUAL	140	2			
MUS	286	Trumpet	2		MUAL	141	2			
MUS	287	Trombone	2		MUAL	142	2			
MUS	288	Baritone	2		MUAL	Elective	2			
MUS	289	Tuba	2		MUAL	143	2			
MUS	290	Percussion	2		MUAL	160	2			
MUS	291	Violin	2		MUAL	180	2			
MUS	292	Viola	2		MUAL	181	2			
MUS	293	Cello	2		MUAL	182	2			
MUS	294	String Bass	2		MUAL	183	2			
MUS	295	Harp	2		MUAL	184	2			
MUS	296	Piano	2		MUAL	110	2			
MUS	297	Organ	2		MUAL	112	2			
MUS	298	Voice	2		MUAL	100	2			
MUS	299	Guitar	2		MUAL	185	2			
NET		Networking			No	Credit	0			No credit transfers from this department
NTR	100	Introduction to the Nutrition Profession	1		No	Credit	0			
NTR	101	Fundamentals of Nutrition	3		NUTR	101	3			
NTR	110	Principles of Food Preparation	3		No	Credit	0			
NTR	200	Nutrition Through the Lifecycle	3		NUTR	210	3			
NTR	205	World Cultures and Food	3		NUTR	241	3			
NTR	210	Food Science	4		NUTR	230	4			

**COURSE SUBSTITUTIONS FOR STUDENTS TRANSFERRING FROM HARPER COLLEGE TO NORTH CENTRAL COLLEGE**

*Based on the 2024-2025 Harper College Catalog and the 2025-2026 North Central College Catalog*

<i>Harper College Courses</i>											<i>NCC Courses</i>			<i>NCC General Education and Comments</i>			
DEPT	NUM	COURSE TITLE	SEM CRED	IAI EQUIV	Dept	Number	Credit	GENERAL EDUCATION			COMMENT						
NTR	225	Sports Nutrition	3		NUTR	Elective	3				Only one of KIN 225 or NTR 225 transfers						
NTR	295	Community Nutrition	3		NUTR	310					May not use to fulfill 300-level req in major/minor						
NTR	296	Dietetic Internship Preparation I	6		No	Credit	0										
NTR	297	Dietetic Internship Preparation II	6		No	Credit	0										
NTR	298	Dietetic Internship Rotation I	6		No	Credit	0										
NTR	299	Dietetic Internship Rotation II	6		No	Credit	0										
NUR		Nursing			No	Credit	0				No credit transfers from this department						
OMD		One Million Degrees			No	Credit	0				No credit transfers from this department						
PED	201	Standard First Aid	3		KINE	147	3										
PHB		Phlebotomy			No	Credit	0				No credit transfers from this department						
PHI	101	Critical Thinking	3	H4 906	PHIL	Elective	3	HUM									
PHI	102	Symbolic Logic	3		PHIL	230	3	QUA									
PHI	105	Introduction to Philosophy	3	H4 900	PHIL	100	3	HUM	ETH								
PHI	115	Ethics	3	H4 904	PHIL	110	3	HUM	ETH								
PHI	120	Social and Political Philosophy	3		PHIL	340	3	HUM	ETH	POW	May not use to fulfill 300-level req in major/minor						
PHI	150	Business Ethics	3		PHIL	210	3	HUM	ETH								
PHI	160	Non-Western Philosophy	3	H4 903N	PHIL	Elective	3	HUM	ETH								
PHI	170	Environmental Ethics	3		PHIL	225	3	HUM	ETH								
PHI	180	Biomedical Ethics	3		PHIL	Elective	3										
PHI	190	Philosophy and Gender	3		PHIL	320	3	HUM	POW		May not use to fulfill 300-level req in major/minor						
PHI	205	Religions of The World	3	H5 904N	SPRE	100	3	HUM	GLO								
PHI	215	Religion in America	3	H4 905	RELG	240	3	HUM	ETH	POW							
PHI	220	Philosophy of Religion	3	H4 905	PHIL	360	3	HUM	ETH		May not use to fulfill 300-level req in major/minor						
PHI	225	Introduction to the New Testament	3	H5 901	SPRE	Elective	3	HUM	ETH								
PHI	231	History of Philosophy: Ancient and Medieval	3	H4 901	PHIL	260	3	HUM	ETH	GLO							
PHI	232	History of Philosophy: Modern	3	H4 902	PHIL	265	3	HUM	ETH								
PHY	100	Basic Concepts in Physics	3	P1 900L	PHYS	Elective	3	SCI									
PHY	110	Introduction to Physics	4	P1 900L	PHYS	Elective	4	SCI									
PHY	112	Energy and Society	4	P1 901L	PHYS	Elective	4	SCI									
PHY	121	Introductory Physics I	5	P1 900L	PHYS	131	5	SCI			Only one of PHY 121 or 201 transfer						
PHY	122	Introductory Physics II	5		PHYS	132	5				Only one of PHY 122 or 202 transfer						
PHY	201	General Physics I: Mechanics	5	P2 900L	PHYS	161	5	SCI			Only one of PHY 121 or 201 transfer						
PHY	202	General Physics II: Electricity and Magnetism	5		PHYS	162	5				Only one of PHY 122 or 202 transfer						
PHY	203	General Physics III: Thermal and Quantum Physics	5		PHYS	265	4										
PLS		Paralegal Studies			No	Credit	0				No credit transfers from this department						
PSC	101	American Politics and Government	3	S5 900	POLS	101	3	SOC	POW								
PSC	210	Topics in Political Science	1-6			Elective					Evaluated individually						
PSC	220	State and Local Government in the U.S.	3	S5 902	POLS	Elective	3	SOC									
PSC	250	Comparative Politics	3	S5 905	POLS	221	3	SOC	GLO								
PSC	260	Middle Eastern Politics	3		POLS	Elective	3	SOC									
PSC	270	Global Politics	3	S5 904N	POLS	102	3	SOC	GLO								
PSC	280	Non-Western Comparative Politics	3	S5 906N	POLS	Elective	3	SOC									
PSY	101	Introduction to Psychology	3	S6 900	PSYC	100	3	SOC									
PSY	106	Practical Psychology	1-3		No	Credit	0										
PSY	107	Humanistic Psychology	2		No	Credit	0										
PSY	108	Topics in Psychology	2-3			Elective					Evaluated individually						
PSY	210	Introduction to Research in Psychology	3		SOCI	200	3	QUA			or PSYC Elective						
PSY	216	Child Psychology	3	S6 903	PSYC	210	3	SOC									
PSY	217	Adolescent Psychology	3	S6 904	PSYC	220	3	SOC									
PSY	218	Adult Psychology	3	S6 905	PSYC	230	3	SOC									
PSY	220	Biological Basis of Behavior	3		PSYC	Elective	3	SCI									
PSY	225	Theories of Personality	3		PSYC	320	3				May not use to fulfill 300-level req in major/minor						

**COURSE SUBSTITUTIONS FOR STUDENTS TRANSFERRING FROM HARPER COLLEGE TO NORTH CENTRAL COLLEGE**

*Based on the 2024-2025 Harper College Catalog and the 2025-2026 North Central College Catalog*

<i>Harper College Courses</i>											<i>NCC Courses</i>			<i>NCC General Education and Comments</i>			
DEPT	NUM	COURSE TITLE	SEM CRED	IAI EQUIV	Dept	Number	Credit	GENERAL EDUCATION			COMMENT						
PSY	228	Psychology of Human Development	3	S6 902	PSYC	235	3	SOC									
PSY	230	Abnormal Psychology	3		PSYC	324	3				May not use to fulfill 300-level req in major/minor						
PSY	235	Learning Theory and Human Behavior	3		PSYC	Elective	3										
PSY	245	Industrial/Organizational Psychology	3		PSYC	270	3										
PSY	251	African American Psychology	3		PSYC	Elective	3										
PTA		Physical Therapist Assistant			No	Credit					No credit transfers from this department						
RAD		Radiologic Technology			No	Credit	0				No credit transfers from this department						
RCS		Respiratory Care Science			No	Credit	0				No credit transfers from this department						
RDG		Reading			No	Credit	0				No credit transfers from this department						
SCM		Supply Chain Management			No	Credit	0				No credit transfers from this department						
SGN	101	American Sign Language I	4		LANG	101	4										
SGN	102	American Sign Language II	4		LANG	102	4										
SGN	103	Fingerspelling & Numbering Systems in ASL	3		LANG	Elective	3										
SGN	201	American Sign Language III	4		LANG	201	4										
SGN	202	American Sign Language IV	3		LANG	202	3										
SGN	205	American Sign Language V	3		LANG	Elective	3										
SGN	210	American Sign Language: Cultural Perspective	4		LANG	Elective	4										
SGN	212	Intro to American Sign Language Literature	3		LANG	Elective	3										
SOC	101	Introduction to Sociology	3	S7 900	SOCI	100	3	SOC	POW								
SOC	120	The Family in Contemporary Society	3	S7 902	SOCI	342	3	SOC	POW		May not use to fulfill 300-level req in major/minor						
SOC	205	Social Problems	3	S7 901	SOCI	Elective	3	SOC	POW								
SOC	215	Introduction to Social Psychology	3	S8 900	PSYC	240	3	SOC									
SOC	220	Topics in Social Science	1-6			Elective					Evaluated individually						
SOC	230	Sociology of Sex and Gender	3	S7 904D	GSST	100	3	SOC	POW								
SOC	235	Race and Ethnicity	3	S7 903D	SOCI	211	3	SOC	POW								
SPA	101	Elementary Spanish I	4		SPAN	101	4										
SPA	102	Elementary Spanish II	4		SPAN	102	4										
SPA	112	Heritage Spanish I	4	H1 900	SPAN	Elective	4	HUM									
SPA	113	Heritage Spanish II	4	H1 900	SPAN	Elective	4	HUM									
SPA	121	Spanish for Law Enforcement Officers	3		No	Credit	0										
SPA	122	Spanish for Healthcare Professionals	3		No	Credit	0										
SPA	201	Intermediate Spanish	4		SPAN	201	4	HUM	GLO								
SPA	202	Intermediate Spanish	4	H1 900	SPAN	202	4	HUM	GLO								
SPA	205	Spanish Conversation	3		SPAN	Elective	3										
SPA	210	Introduction to Spanish Literature	3	H3 917	SPAN	Elective	3	HUM									
SPE	101	Fundamentals of Speech Communications	3	C2 900	COMM	110	3										
SPE	102	Professional Communication	3		COMM	Elective	3										
SPE	107	Oral Interpretation	3		COMM	Elective	3										
SPE	180	Applied Forensics I	1		COMM	119	1				A maximum 6 hours of COMM 119 transfer						
SPE	181	Applied Forensics II	1		COMM	119	1				A maximum 6 hours of COMM 119 transfer						
SPE	182	Applied Forensics III	1		COMM	119	1				A maximum 6 hours of COMM 119 transfer						
SPE	183	Applied Forensics IV	1		COMM	119	1				A maximum 6 hours of COMM 119 transfer						
SPE	200	Interpersonal Communication	3		COMM	200	3	SOC									
SPE	205	Small Group Communicaiton/Team Work	3		COMM	214	3	SOC									
SPE	210	Argumentation and Debate	3		COMM	285	3	HUM	ETH								
SPE	215	Intercultural Communication	3		COMM	317	3	SOC	GLO		May not use to fulfill 300-level req in major/minor						
SUR		Surgical Technology			No	Credit	0										
THE	111	Introduction to Theatre	3	F1 907	THEA	102	3	ART									
THE	121	Ethnic Traditions in American Theatre	3	F1 909D	THEA	Elective	3	ART									
THE	190	Applied Theatre Practicum I	1		THPR	115	1				A maximum 6 hours of THE 115 transfer						
THE	191	Applied Theatre Practicum II	1		THPR	115	1				A maximum 6 hours of THE 115 transfer						
THE	192	Applied Theatre Practicum III	1		THPR	115	1				A maximum 6 hours of THE 115 transfer						

**COURSE SUBSTITUTIONS FOR STUDENTS TRANSFERRING FROM HARPER COLLEGE TO NORTH CENTRAL COLLEGE**

*Based on the 2024-2025 Harper College Catalog and the 2025-2026 North Central College Catalog*

<i>Harper College Courses</i>				<i>NCC Courses</i>			<i>NCC General Education and Comments</i>				
DEPT	NUM	COURSE TITLE	SEM CRED	IAI EQUIV	Dept	Number	Credit	GENERAL EDUCATION			COMMENT
THE	193	Applied Theatre Practicum IV	1		THPR	115	1				A maximum 6 hours of THE 115 transfer
THE	212	Acting I	3		THEA	150	3				
THE	213	Acting II	3		THST	250	3				
THE	216	Stagecraft	3		THST	141	3				
WEB	110	Internet Fundamentals	3		No	Credit	0				
WEB	140	Mobile Apps	3		No	Credit	0				
WEB	150	Web Foundations	3		ARTD	245	3				
WEB	170	Web Graphics and Prototyping	3		INFS	Elective	3				
WEB	180	Web Multimedia	3		INFS	Elective	3				
WEB	190	Web Authoring Tools	3		No	Credit	0				
WEB	200	Web Scripting Foundations	3		INFS	115	3				
WEB	210	Web Accessibility	3		No	Credit	0				
WEB	235	Interactive Scripting	3		INFS	Elective	3				
WEB	240	E-Commerce Strategies and Technologies	3		No	Credit	0				
WEB	250	Server-Side Scripting	3		INFS	Elective	3				
WEB	285	Topics in Web Development	1-6			Elective					Evaluated individually
WEB	299	Web Management Capstone	3			Elective					Evaluated individually
WLD		Welding			No	Credit	0				No credit transfers from this department