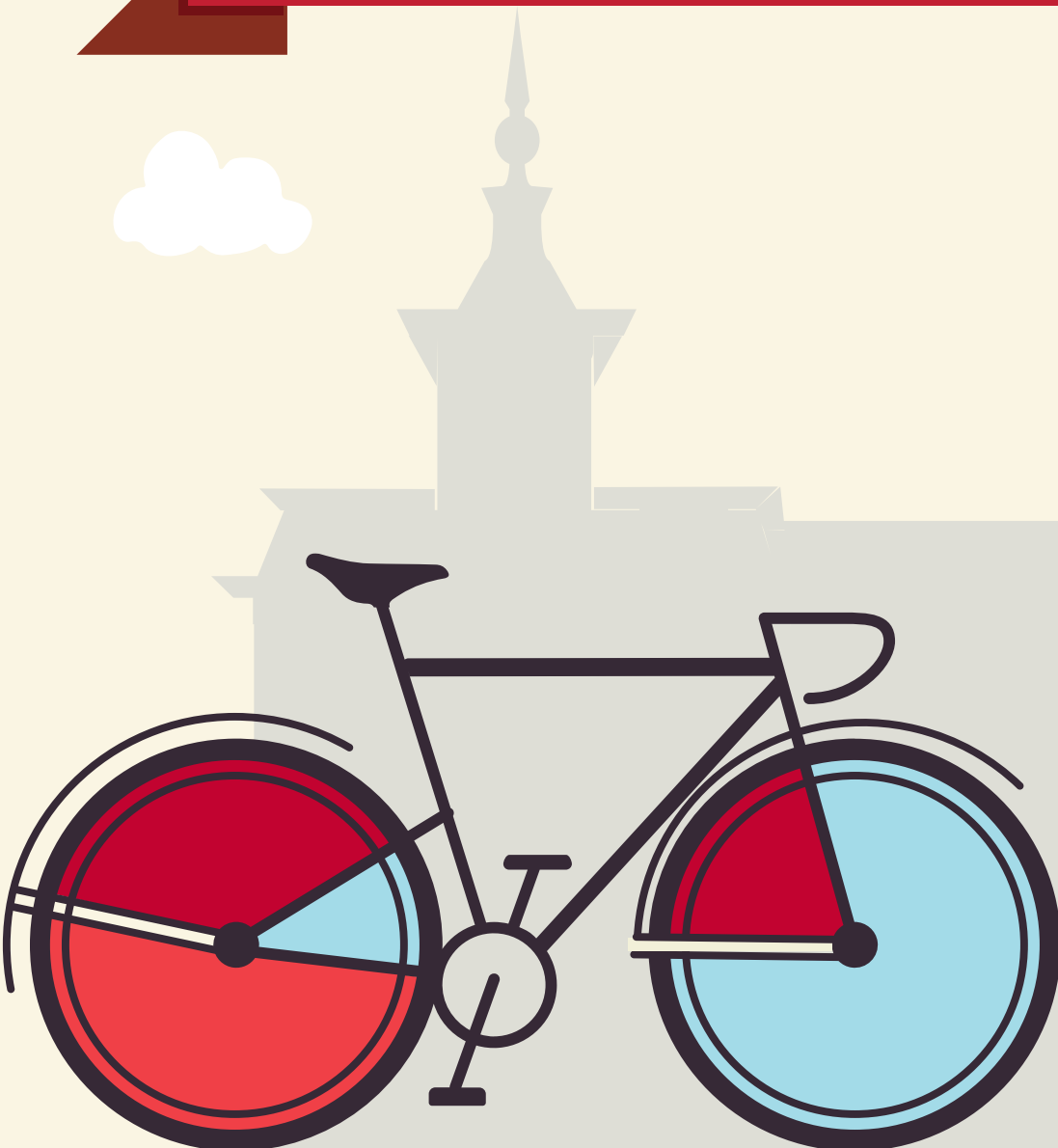


# YOUR GUIDE TO TRANSFERRING TO NORTH CENTRAL COLLEGE

**MORTON COLLEGE**





# NORTH CENTRAL COLLEGE 1861

## Guide for transferring from Morton College to North Central College

This guide is based on the 2023-2024 Morton College catalog, and the 2025-2026 North Central College catalog. North Central College reserves the right to alter any information listed in this guide, including the transferability of courses, without notice or obligation. For assistance with this guide, please call the Office of Admission at (630) 637-5800 or email at [admissions@noctrl.edu](mailto:admissions@noctrl.edu).

How to use this guide: This course substitution guide is designed to help you select courses at Morton College if you plan to transfer to North Central College. Working with your MC advisor and NCC transfer admission counselor, refer to this guide to determine courses that meet North Central College requirements in our general education curriculum, academic major and minor requirements, and electives. Your NCC counselor can also provide a major planning worksheet. Listed below is a sample from this guide:

MC Course Numbers, Titles, Credit					NCC Equivalent Course Numbers & Credit			NCC General Education Codes			Important Information about courses
DEPT	NUM	COURSE TITLE	CREDIT	IAI EQUIV	DEPT	NUM	CREDIT	GENERAL EDUCATION			COMMENTS
MAT	102	General Education Mathematics	4	M1 904	MATH	120	4	QUA			
MAT	105	College Algebra	4		MATH	Elective	4				MAT 105 + MAT 110 = MATH 140

The Cardinal Directions general education curriculum at North Central College is as follows, along with the general education codes you will find in this guide. Please note the column to the far right which indicates which of these requirements may be waived (or required) based on the level of education you achieve prior to transferring. For additional details, please reference the NC catalog: <http://catalog.noctrl.edu/content.php?catoid=26&navoid=2582>.

## CARDINAL DIRECTIONS CURRICULUM MAP

Requirement	General Education Code	Credit	Comments
Composition	COMP	4 credits	Met with A.A. or A.S. degree
Writing Intensive	WRI	4 credits	Met with A.A. or A.S. degree
Public Speaking	COM	4 credits	Met with A.A. or A.S. degree
Arts	ART	4 credits	Met with A.A. or A.S. degree
Humanities	HUM	4 credits	Met with A.A. or A.S. degree
Social Science	SOC	4 credits	Met with A.A. or A.S. degree
Science	SCI	4 credits	Met with A.A. or A.S. degree
Quantitative Analysis	QUA	4 credits	Met with A.A. or A.S. degree
Power Structures or Global Understanding	POW or GLO	4 credits	Met with A.A. or A.S. degree GLO may be met with Study Abroad at NCC
Ethical Dimensions	ETH	4 credits	Met with A.A. or A.S. degree
Well Being	WEL	2 credits	Met with A.A. or A.S. degree
Experiential (One of the following):	-Community Engaged Learning -Study Away/Study Abroad -Student Research -CARD 400 – Senior Seminar: Liberal Arts and Problems of Today	2 credits	Met with A.A. or A.S. degree
Career Readiness: Preparation and Experiential*	CARD 250 – Career Preparation CARD 300 – Career Experiential	4 credits total	*Must be taken at NC

- An equivalent 3-credit transfer course may be used to fulfill a General Education requirement.
- One course may fulfill multiple requirements.
- College Transfer Credits are courses taken at a college or university after graduating high school and not earned through AP, IB, or CLEP.
- Only 64 semester hours (96 quarter hours) may transfer from a 2-yr college. Developmental courses (under 100-level) do not transfer.
- Requirements met through an eligible A.A. or A.S. degree may also be met with an eligible A.A.S. degree only if applied to the B.A.S. degree.
- Students with less than 28 transferable hours will need to complete CARD 110, a 1-credit transition course.

**COURSE SUBSTITUTIONS FOR STUDENTS TRANSFERRING FROM MORTON COLLEGE TO NORTH CENTRAL COLLEGE**

*Based on the 2023-2024 Morton College Catalog and the 2025-2026 North Central College Catalog*

Morton College Courses										
Morton College Courses					NCC Courses			NCC General Education and Comments		
DEPT	NUM	COURSE TITLE	SEM CRED	IAI EQUIV	Dept	Number	Credit	GENERAL EDUCATION		
ANT	101	Introduction to Anthropology	3	S1 902	ANTH	Elective	3	SOC		
ANT	102	Introduction to Cultural Anthropology	3	S1 901N	ANTH	Elective	3	SOC	GLO	
ART	101	Two-Dimensional Fundamentals	3		ARTD	107	3			
ART	102	Three-Dimensional Fundamentals	3		ARTD	160	3			
ART	103	Drawing I	3		ARTD	120	3	ART		
ART	104	Drawing II	3		ARTD	220	3			
ART	105	Painting I	3		ARTD	130	3	ART		
ART	107	Watercolor	3		ARTD	135	3			
ART	111	Sculpture I	3		ARTD	260	3	ART		
ART	113	Ceramics I	3		ARTD	150	3	ART		
ART	115	Photography I	3		ARTD	Elective	3			
ART	116	Photography II	3		ARTD	175	3	ART		
ART	117	Digital Photo	3		ARTD	275	3			
ART	120	Art Appreciation	3	F2 900	ARTD	100	3	ART		
ART	125	Art History Survey I Prehistoric to Gothic	3	F2 901	ARTH	100	3	ART	GLO	
ART	126	Art History Survey II Renaissance and Baroque	3	F2 902	ARTH	102	3	ART	GLO	
ART	127	Art History-Survey III Modern World	3	F2 902	ARTH	302	3	ART	WRI	May not use to fulfill 300-level req in major/minor
ART	130	Introduction to Digital Art	3		ARTD	140	3			Only one of ART 130 or CIS 159 transfer
ART	131	Graphic Design I	3		ARTD	242	3			
ART	203	Figure Drawing I	3		ARTD	225	3			
ART	204	Figure Drawing II	3		ARTD	Elective	3			
ART	205	Painting II	3		ARTD	230	3			
ART	211	Sculpture II	3		ARTD	Elective	3			
ART	213	Ceramics II	3		ARTD	250	3			
ART	217	Indigenous Art	3	F2 903N	ARTH	Elective	3	ART		
ART	220	Latin American Traditions in Art	3	F2 906D	ARTH	314	3	ART		May not use to fulfill 300-level req in major/minor
ATM		Automotive Technology			No	Credit	0			No credit transfers from this department
BIO	100	Introducing Biology	3	L1 900	BIOL	Elective	3	SCI		Only one of BIO 100 or BIO 102 transfer
BIO	102	Introduction to Biology	4	L1 900L	BIOL	Elective	4	SCI		Only one of BIO 100 or BIO 102 transfer
BIO	106	Anat & Physiology for Allied Health Professions	3		BIOL	Elective	5			
BIO	110	Biology: Cellular Approach	5	L1 900L	BIOL	Elective	5	SCI		
BIO	111	Biology: Systems Approach	5		BIOL	Elective	5	SCI		
BIO	150	Heredity and Society	3	L1 906	BIOL	Elective	3	SCI		
BIO	152	Anatomy & Physiology (Therapies)	5		No	Credit	0			Need syllabus for review
BIO	160	Plants and Society	3	L1 901	BIOL	Elective	3	SCI		
BIO	161	Plants and Society Laboratory	1	L1 901L	BIOL	Elective	1	SCI		Only if BIO 160 is complete
BIO	202	Environmental Biology	3	L1 905	BIOL	Elective	3	SCI		
BIO	203	Anatomy and Physiology I	4		BIOL	201	4			
BIO	204	Anatomy and Physiology II	4		BIOL	202	4			
BIO	212	Microbiology	4		BIOL	145	4			
BUS	101	Financial Accounting	3		ACCT	201	3			
BUS	102	Managerial Accounting	3		ACCT	202	3			
BUS	106	Principles of Finance	3		BUSN	Elective	3			
BUS	107	Principles of Marketing	3		MKTG	300	3			May not use to fulfill 300-level req in major/minor
BUS	110	Personal Finance	2		SBEN	210	2	WEL		
BUS	111	Introduction to Business	4		SBEN	100	4	SOC	ETH	GLO
BUS	117	Sales Management	3		MKTG	340	3			May not use to fulfill 300-level req in major/minor
BUS	127	Business Mathematics	3		No	Credit	0			
BUS	130	Accounting with Quickbooks I	1		No	Credit	0			
BUS	132	Accounting with Quickbooks II	1		No	Credit	0			
BUS	201	Cost Accounting	3		ACCT	307	3			May not use to fulfill 300-level req in major/minor
BUS	202	Intermediate Accounting I	3		ACCT	317	3			May not use to fulfill 300-level req in major/minor

**COURSE SUBSTITUTIONS FOR STUDENTS TRANSFERRING FROM MORTON COLLEGE TO NORTH CENTRAL COLLEGE**

*Based on the 2023-2024 Morton College Catalog and the 2025-2026 North Central College Catalog*

Morton College Courses										
Morton College Courses					NCC Courses			NCC General Education and Comments		
DEPT	NUM	COURSE TITLE	SEM CRED	IAI EQUIV	Dept	Number	Credit	GENERAL EDUCATION		
BUS	203	Intermediate Accounting II	3		ACCT	318	3			May not use to fulfill 300-level req in major/minor
BUS	205	Principles of Auditing	3		No	Credit	0			
BUS	207	Essentials-Contemporary Advertising	3		MKTG	Elective	3			
BUS	208	Principles of Management	3		MGMT	305	3			May not use to fulfill 300-level req in major/minor
BUS	215	Human Resource Management	3		MGMT	345	3			May not use to fulfill 300-level req in major/minor
BUS	218	Small Business Management	3		MGMT	296	3			
BUS	230	Business Law and Contracts	3		BUSN	205	3	ETH		
BUS	231	Business Law and Commerical Transactions	3		BUSN	Elective	3			
BUS	241	Business Statistics	4		BUSN	265	4	QUA		Only one of BUS 241 or MTH 141 transfer
BUS	242	Business Communications	3		COMM	280	3			
BUS	253	Successful Career Strategies	2		No	Credit	0			
BUS	299	Special Topics in Business	1-5			Elective				Evaluated individually
CAD		Computer Aided Design			No	Credit	0			No credit transfers from this department
CDT		Cannabis Dispensary Technician			No	Credit	0			No credit transfers from this department
CHM	100	Fundamentals of Chemistry	4		CHEM	Elective	4	SCI		
CHM	101	Introduction to Chemistry I	4		CHEM	Elective	4	SCI		
CHM	102	Introduction to Chemistry II	4		CHEM	100	4	SCI		
CHM	105	General Chemistry I	5	P1 902L	CHEM	121	5	SCI		
CHM	106	General Chemistry II	5		CHEM	122	5			
CHM	205	Organic Chemistry I	5		CHEM	251	5			
CHM	206	Organic Chemistry II	5		CHEM	252	5			
CIS		All Courses Numbered Below 100			No	Credit	0			
CIS	102	Career Essentials for CIS	3		No	Credit	0			
CIS	103	Introduction to Web Design	3		INFS	Elective	3			
CIS	104	CIS Fundamentals	3		No	Credit	0			
CIS	105	Programming Logic	3		INFS	Elective	3			
CIS	116	Introduction to HTML Coding	3		INFS	Elective	3			
CIS	121	Database Management	3		INFS	160	3			
CIS	128	Mobile App Development I	3		INFS	Elective	3			
CIS	132	Introduction to Networking	3		No	Credit	0			
CIS	133	Interconnecting Network Devices I	3		No	Credit	0			
CIS	135	Network Client Configuration	4		No	Credit	0			
CIS	136	Server Configuration and Administration	4		No	Credit	0			
CIS	138	Mobile App Development II	3		INFS	Elective	3			
CIS	144	Intro to Python Coding			INFS	Elective	3			
CIS	159	Adobe Photoshop & Flash	3		INFS	Elective	3			Only one of ART 130 or CIS 159 transfer
CIS	161	Introduction to Operating Systems	3		No	Credit	0			
CIS	165	Network Security I	3		No	Credit	0			
CIS	170	Introduction to JAVA	3		CSCE	160	3			
CIS	175	Network Security II	3		No	Credit	0			
CIS	180	Computer Diagnosis & Service I	3		No	Credit	0			
CIS	181	Computer Diagnosis & Service II	3		No	Credit	0			
CIS	203	Advanced Web Design	3		INFS	115	3			
CIS	220	Systems Analysis	3		BUSN	Elective	3			
CIS	228	Mobile App Development III	3		INFS	Elective	3			
CIS	233	Interconnecting Network Devices II	3		No	Credit	0			
CIS	253	Successful Career & Life Strategies	2		No	Credit	0			
CIS	265	Network Security III	4		No	Credit	0			
CIS	295	CIS Internship	1			Elective				Evaluated individually
CIS	299	Special Topics Computer Information Systems	1-5			Elective				Evaluated individually
CPS	101	Information Technologies	2		No	Credit	0			
CPS	111	Business Computer Systems	3		No	Credit	0			

**COURSE SUBSTITUTIONS FOR STUDENTS TRANSFERRING FROM MORTON COLLEGE TO NORTH CENTRAL COLLEGE**

*Based on the 2023-2024 Morton College Catalog and the 2025-2026 North Central College Catalog*

Morton College Courses					NCC Courses			NCC General Education and Comments			
DEPT	NUM	COURSE TITLE	SEM CRED	IAI EQUIV	Dept	Number	Credit	GENERAL EDUCATION			COMMENT
CPS	122	Multimedia Applications	3		No	Credit	0				
CPS	200	C++ Programming for Engineers	3		CSCE	150	3				
CPS	210	Programming in Visual Basic	3		CSCE	Elective	3				Consult CSCE department for placement
CSS	100	College Study Skills	3		No	Credit	0				
ECE	100	Early Childhood Growth and Development	3		PSYC	Elective	3				
ECE	101	Observation and Assessment of Children	3		No	Credit	0				
ECE	105	Health, Safety & Nutrition-Young Child	3		KINE	Elective	3				
ECE	110	Introduction to Early Childhood Education	3		NCCC	Elective	3				
ECE	115	Family, School and Community	3		No	Credit	0				
ECE	120	Language Arts for Children	3		NCCC	Elective	3				
ECE	125	The Exceptional Child	3		EDUC	Elective	3				
ECE	130	Educational Technology	1		EDUC	Elective	0				
ECE	140	Nature, Art & the Young Child	1		No	Credit	0				
ECE	145	Child, Family, Culture and Nature	1		No	Credit	0				
ECE	160	Curriculum Planning for Children	3		EDUC	Elective	3				
ECE	162	Creative Curriculum for Preschool	1		No	Credit	0				
ECE	164	Creative Curriculum for Inf/Tod/2'S	1		No	Credit	0				
ECE	166	Guidelines & Standards for ECE	1		No	Credit	0				
ECE	200	Play and Guidance of Children	3		No	Credit	0				
ECE	202	Math for Early Childhood	2		NCCC	Elective	2				
ECE	203	Emerging Literacy in Children	3		NCCC	Elective	3				
ECE	207	Creative Expression for Children	3		NCCC	Elective	3				
ECE	210	Early Childhood Administration	3		No	Credit	0				
ECE	215	First Three Years of Life	3		No	Credit	0				
ECE	220	Young Child as Scientist	1		No	Credit	0				
ECE	225	Fundamentals-Nature Play & Learning	2		No	Credit	0				
ECE	230	Environment: Nature Play In and Out	1		No	Credit	0				
ECE	260	Early Childhood Education Internship	3		No	Credit	0				
ECE	261	ECE Administrative Internship	3		No	Credit	0				
ECE	299	Special Topics Early Childhood Education				Elective					Evaluated individually
ECO	101	Principles Economics I (Macroeconomics)	3	S3 901	ECON	205	3	SOC			
ECO	102	Principles Economics II (Microeconomics)	3	S3 902	ECON	200	3	SOC			
EDU	100	Introduction to American Education	3		EDUC	101	3	SOC	POW		
EDU	999	Basic Skill Test Prep	1-3		No	Credit	0				
EGR	110	Engineering Graphics I	3		ENGR	Elective	3				
EGR	111	Engineering Graphics II	3		ENGR	Elective	3				
EGR	120	Statics	3		PHYS	212	3				
EGR	121	Dynamics	3		PHYS	Elective	3				
EMT		Emergency Medical Technician			No	Credit	0				No credit transfers from this department
ENG		All Courses Numbered Below 100			No	Credit	0				
ENG	101	Rhetoric I	3	C1 900	ENGL	110	3	COMP			
ENG	102	Rhetoric II	3	C1 901R	ENGL	110	3	COMP			or WRI if ENG 101 is complete
ENG	151	Creative Writing I	3		ENGL	Elective	3	ART			
ENG	152	Creative Writing II - Lit Non-Fiction	3		ENGL	Elective	3	ART			
ENG	211	Introduction to Literature	3	H3 900	ENGL	Elective	3	HUM			
ENG	215	American Literature I	3	H3 914	ENGL	Elective	3	HUM			
ENG	216	American Literature II	3	H3 915	ENGL	208	3	HUM			
ENG	218	U.S. Latino/Hispanic Literature	3	H3 910D	ENGL	Elective	3	HUM	POW		
ENG	219	African American Literature	3	H3 910D	ENGL	232	3	HUM	POW		
FIR		Fire Science Technology			No	Credit	0				No credit transfers from this department
FRE	101	Elementary French I	4		FREN	101	4				
FRE	102	Elementary French II	4		FREN	102	4				

COURSE SUBSTITUTIONS FOR STUDENTS TRANSFERRING FROM MORTON COLLEGE TO NORTH CENTRAL COLLEGE											
Based on the 2023-2024 Morton College Catalog and the 2025-2026 North Central College Catalog											
Morton College Courses					NCC Courses			NCC General Education and Comments			
DEPT	NUM	COURSE TITLE	SEM CRED	IAI EQUIV	Dept	Number	Credit	GENERAL EDUCATION			COMMENT
FRE	201	Intermediate French I	4		FREN	201	4				
FRE	202	Intermediate French II	4		FREN	202	4	HUM			
GEG	101	Physical Geography	5	P1 909	SCIE	Elective	5	SCI			
GEG	105	World Regional Geography	3	S4 900N	SOCI	Elective	3	SOC			
GEG	107	Introduction to Human Geography	3	S4 900N	SOCI	Elective	3	SOC			
GEG	125	Geography of the Eastern World	3	S4 902N	SOCI	Elective	3	SOC			
GEL	101	Physical Geology	4	P1 907L	SCIE	Elective	4	SCI			
GSP	111	Game Development Essentials	3		MEDI	Elective	3				
HCP		Health Careers			No	Credit	0				No credit transfers from this department
HIS	103	Early Western Civilization	3	H2 901	HIST	101	3	HUM			
HIS	104	Modern Western Civilization	3	H2 902	HIST	102	3	HUM	GLO		
HIS	105	American History to 1865	3	S2 900	HIST	Elective	3	SOC	GLO	POW	
HIS	106	American History From 1865	3	S2 901	HIST	Elective	3	SOC	GLO	POW	
HIS	140	American Popular Culture	3		HIST	Elective	3				
HIS	190	War and Western Society	3		HIST	Elective	3				
HIT		Health Information Technology			No	Credit					No credit transfers from this department
HUM	150	Humanities Through the Arts	3	HF 900	NCCC	Elective	3	HUM			
HUM	153	Survey of Film History	3	F2 909	FILM	100	3	ART			
HUM	154	Latin American Civilization and Culture	3	H2 903N	HIST	Elective	3	HUM			
HVA		Heating, Ventilation & Air Conditioning			No	Credit	0				No credit transfers from this department
IND	199	Independent Study	1-4			Elective					Evaluated individually
JRN	101	Culture of Journalism	3		MEDI	225	3				
JRN	102	News Editing and Production	3		MEDI	250	3				
JRN	106	Mass Media	3		COMM	185	3	SOC	GLO	POW	
LAW	101	Introduction to Law Enforcement	3		No	Credit	0				
LAW	102	Introduction to Criminology	3		CRIM	100	3				
LAW	104	Police Operations and Procedures I	3		No	Credit	0				
LAW	105	Administration of Justice	3		No	Credit	0				
LAW	201	Police Operations and Procedures II	3		No	Credit	0				
LAW	202	Juvenile Delinquency	3		SOCI	221	3	POW			
LAW	203	Law Enforcement and Community Relations	3		No	Credit	0				
LAW	204	Criminal Law I	3		SOCI	Elective	3				
LAW	205	Criminal Law II	3		No	Credit	0				
LAW	206	Introduction to Criminal Investigation	3		No	Credit	0				
LAW	207	Court Procedures and Evidence	3		No	Credit	0				
LAW	208	Police Organization and Administration	3		No	Credit	0				
LAW	210	Cold Case Investigation	3		No	Credit	0				
LAW	299	Special Topics in Law Enforcement	1-5			Elective					Evaluated individually
MAT		All Courses Numbered Below 100			No	Credit	0				
MAT	100	Occupational Math	3		No	Credit	0				
MAT	102	General Education Mathematics	4	M1 904	MATH	120	4	QUA			
MAT	105	College Algebra	4		MATH	Elective	4				MAT 105 + MAT 110 = MATH 140
MAT	110	College Trigonometry	3		MATH	Elective	3				MAT 105 + MAT 110 = MATH 140
MAT	120	Math for Elem School Teachers I	4		MATH	107	4				
MAT	121	Math for Elem School Teachers II	4	M1 903	MATH	108	4	QUA			
MAT	124	Finite Mathematics	4	M1 906	MATH	130	4	QUA			
MAT	141	Statistics	4	M1 902	PSYC	250	4	QUA			Only one of MAT 161 or BUS 241 transfer
MAT	181	Discrete Mathamatics	3		CSCE	230	3				
MAT	201	Calculus I	5	M1 900-1	MATH	201	5	QUA			
MAT	202	Calculus II	5	M1 900-2	MATH	152	5	QUA			
MAT	203	Calculus III	4	M1 900-3	MATH	253	4	QUA			
MAT	215	Differential Equations	3		MATH	315	3				May not use to fulfill 300-level req in major/minor

COURSE SUBSTITUTIONS FOR STUDENTS TRANSFERRING FROM MORTON COLLEGE TO NORTH CENTRAL COLLEGE											
Based on the 2023-2024 Morton College Catalog and the 2025-2026 North Central College Catalog											
Morton College Courses					NCC Courses			NCC General Education and Comments			
DEPT	NUM	COURSE TITLE	SEM CRED	IAI EQUIV	Dept	Number	Credit	GENERAL EDUCATION			COMMENT
MAT	224	Calculus for Business and Social Science	4	M1 900-B	MATH	Elective	4				
MUS	100	Music Appreciation	3	F1 900	MUSI	150	3	ART			
MUS	101	History of Music : Pre-Twentieth Century	3	F1 901	MUSI	Elective	3	ART			MUS 101 + MUS 102 = MUSI 258
MUS	102	History of Music: Twentieth Century	3	F1 902	MUSI	Elective	3	ART			MUS 101 + MUS 102 = MUSI 258
MUS	103	Music of Multicultural America	3	F1 905D	MUSI	Elective	3	ART			
MUS	105	Introduction to American Music	3	F1 904	MUSI	Elective	3	ART			
MUS	106	Trends in Modern American Music	3	F1 904	MUSI	Elective	3	ART			
MUS	108	World Music Survey	3	F1 903N	MUSI	156	3	ART	GLO		
MUS	110	Music Theory I	3		MUSI	101	3				
MUS	111	Music Theory II	3		MUSI	102	3				
MUS	112	Keyboard Musicianship 1	1		MUSI	Elective	1				
MUS	115	Ear Training and Sight Singing I	3		MUSI	Elective	3				
MUS	116	Ear Training and Sight Singing II	3		MUSI	108	3				
MUS	117	Keyboard Musicianship 2	1		MUSI	Elective	1				
MUS	121	College Choir	1		MUEN	100	1				
MUS	122	College Singers	1		MUEN	Ensemble	1				
MUS	123	Popular Music Ensembles	1		MUEN	Ensemble	1				
MUS	127	Community Chorus	1		MUEN	103	1				
MUS	128	Community Orchestra	1		MUEN	112	1				
MUS	129	Community Band	1		MUEN	113	1				
MUS	130	160, 230, 260 Applied Piano Mus Major I,II,III,IV	2		MUAL	110	2				
MUS	131	161, 231, 261 Applied Piano Mus Major I,II,III,IV	1		MUAL	110	1				
MUS	132	162, 232, 262 Applied Voice Mus Major I,II,III,IV	2		MUAL	100	2				
MUS	133	163, 233, 263 Applied Voice Non Major I,II,III,IV	1		MUAL	100	1				
MUS	134	164, 234, 264 Applied Guitar Mus Major I,II,III,IV	2		MUAL	185	2				
MUS	135	165, 235, 265 Applied Guitar Non Major I,II,III,IV	1		MUAL	185	1				
MUS	136	166, 236, 266 Applied Percussion Major I,II,III,IV	2		MUAL	160	2				
MUS	137	167, 237, 267 Applied Percussion Non I,II,III,IV	1		MUAL	160	1				
MUS	138	168, 238, 268 Applied Strings Mus Major I,II,III,IV	2		MUAL	189	2				
MUS	139	169, 239, 269 Applied Strings Non Major I,II,III,IV	1		MUAL	189	1				
MUS	140	170, 240, 270 Applied Woodwind Major I,II,III,IV	2		MUAL	129	2				
MUS	141	171, 241, 271 Applied Woodwind Non I,II,III,IV	1		MUAL	129	1				
MUS	142	172, 242, 272 Applied Brass Mus Major I,II,III,IV	2		MUAL	159	2				
MUS	143	173, 243, 273 Applied Brass Non Major I,II,III,IV	1		MUAL	159	1				
MUS	152	222, 252 College Singer II,III,IV	1		MUEN	Ensemble	1				
MUS	153	223, 253 Popular Ensemble II,III,IV	1		MUEN	Ensemble	1				
MUS	158	228, 258 Symphony Orchestra II,III,IV	1		MUEN	Ensemble	1				
MUS	159	229, 259 Concert Band II,III,IV	1		MUEN	Ensemble	1				
MUS	180	Introduction to Media Production	3		MEDI	Elective	3				
MUS	182	Media Production I	3		MEDI	262	3				
MUS	182	Media Production II	3		MEDI	Elective	3				
MUS	210	Music Theory 3	3		MUSI	201	3				
MUS	211	Music Theory 4	3		MUSI	202	3				
MUS	212	Keyboard Musicianship 3	1		MUSI	Elective	1				
MUS	215	Ear Training and Sight Singing III	1		MUSI	Elective	1				
MUS	216	Ear Training and Sight Singing IV	1		MUSI	208	1				
MUS	217	Keyboard Musicianship 4	1		MUSI	Elective	1				
MUS	280	Music Production for Media	3		MEDI	Elective	3				
MUS	281	Live Sound Recording	3		MUSI	Elective	3				
MUS	282	Music Production Internship	1-4			Elective					Evaluated individually
NUR		Nursing			No	Credit	0				No credit transfers from this department
OMT		Office Management Technology			No	Credit	0				No credit transfers from this department

COURSE SUBSTITUTIONS FOR STUDENTS TRANSFERRING FROM MORTON COLLEGE TO NORTH CENTRAL COLLEGE											
Based on the 2023-2024 Morton College Catalog and the 2025-2026 North Central College Catalog											
Morton College Courses					NCC Courses			NCC General Education and Comments			
DEPT	NUM	COURSE TITLE	SEM CRED	IAI EQUIV	Dept	Number	Credit	GENERAL EDUCATION			COMMENT
PEC	101	Adaptive Physical Education	1		KINE	Activity	1				A maximum 8 hours of KINE activity transfer
PEC	131	Softball	1		KINE	Activity	1				A maximum 8 hours of KINE activity transfer
PEC	132	Volleyball	1		KINE	Activity	1				A maximum 8 hours of KINE activity transfer
PEC	133	Power Volleyball	1		KINE	Activity	1				A maximum 8 hours of KINE activity transfer
PEC	139	Golf	1		KINE	Activity	1				A maximum 8 hours of KINE activity transfer
PEC	140	Golf II (Advanced)	1		KINE	Activity	1				A maximum 8 hours of KINE activity transfer
PEC	155	Aerobic Exercise	1		KINE	Activity	1				A maximum 8 hours of KINE activity transfer
PEC	158	Basketball	1		KINE	Activity	1				A maximum 8 hours of KINE activity transfer
PEC	159	Advanced Basketball	1		KINE	Activity	1				A maximum 8 hours of KINE activity transfer
PEC	171	Physical Fitness	1		KINE	Activity	1				A maximum 8 hours of KINE activity transfer
PEC	172	Advanced Physical Fitness	1		KINE	Activity	1				A maximum 8 hours of KINE activity transfer
PEC	173	Weight Training	1		KINE	Activity	1				A maximum 8 hours of KINE activity transfer
PEC	174	Advanced Weight Training	1		KINE	Activity	1				A maximum 8 hours of KINE activity transfer
PEC	175	Circuit Training	1		KINE	Activity	1				A maximum 8 hours of KINE activity transfer
PEC	176	Advanced Circuit Training	1		KINE	Activity	1				A maximum 8 hours of KINE activity transfer
PEC	177	Weight Control and Exercise	1		KINE	Activity	1				A maximum 8 hours of KINE activity transfer
PEC	178	Soccer	1		KINE	Activity	1				A maximum 8 hours of KINE activity transfer
PEC	180	Introduction to Physical Education	2		KINE	Elective	2				
PEC	181	Jogging and Power Walking for Fitness	1		KINE	Activity	1				A maximum 8 hours of KINE activity transfer
PEC	183	Baseball	1		KINE	Activity	1				A maximum 8 hours of KINE activity transfer
PEC	190	Sports Officiating	2		KINE	Elective	2				
PEC	200	Leadership in Team and Individual Sports	2		KINE	Elective	2				
PEH	101	Personal Community Health	3		HTSC	Elective	3	WEL			
PEH	102	First Aid	2		HTSC	100	2	WEL			
PEH	103	Nutrition	2		NUTR	Elective	2				
PEH	104	Foundations of Health/Physical Fitness	2		KINE	Elective	2				
PEH	105	Wellness	2		HTSC	Elective	2	WEL			
PHI	125	World Religions in Global Context	3	H5 904N	SPRE	100	3	HUM	GLO		
PHI	126	Introduction to Ethics	3	H4 904	PHIL	110	3	HUM	ETH		
PHI	180	Social Ethics	3	H4 904	PHIL	Elective	3	HUM	ETH		
PHI	201	Philosophy	3	H4 900	PHIL	100	3	HUM	ETH		
PHI	202	Introduction to Logic	3	H4 906	PHIL	230	3	QUA			
PHS	101	Astronomy	3	P1 906	PHYS	110	3	SCI			
PHS	103	Physical Science I	4	P9 900L	SCIE	Elective	4	SCI			
PHT		Physical Therapist Assistant			No	Credit	0				No credit transfers from this department
PHY	100	Fundamentals of Physics	3		PHYS	Elective		SCI			
PHY	101	General Physics I	5	P1 900L	PHYS	131	5	SCI			
PHY	102	General Physics II	5		PHYS	132	5	SCI			
PHY	105	Physics I	5		PHYS	Elective	4	SCI			PHY 105 + PHY 205 = PHYS 161
PHY	205	Physics II	5		PHYS	Elective	5	SCI			PHY 205 + PHY 206 = PHYS 162
PHY	206	Physics III	5		PHYS	Elective	5				
POL	201	United States National Government	3	S5 900	POLS	101	3	SOC	POW		
POL	202	State and Local Government	3	S5 902	POLS	Elective	3	SOC			
PSY	101	Introduction to Psychology	3	S6 900	PSYC	100	3	SOC			
PSY	201	Social Psychology	3	S8 900	PSYC	240	3	SOC			
PSY	202	Abnormal Psychology	3		PSYC	324	3				May not use to fulfill 300-level req in major/minor
PSY	210	Child Growth and Development	3	S6 903	PSYC	210	3	SOC			
PSY	211	Adolescent Psychology	3	S6 904	PSYC	220	3	SOC			
PSY	215	Life Span: A Survey of Human Development	3	S6 902	PSYC	235	3	SOC			
SCM		Supply Chain Management			No	Credit	0				No credit transfers from this department
SOC	100	Introduction to Sociology	3	S7 900	SOCI	100	3	SOC	POW		
SOC	101	The Family	3	S7 902	SOCI	342	3	SOC	GLO		May not use to fulfill 300-level req in major/minor

COURSE SUBSTITUTIONS FOR STUDENTS TRANSFERRING FROM MORTON COLLEGE TO NORTH CENTRAL COLLEGE											
Based on the 2023-2024 Morton College Catalog and the 2025-2026 North Central College Catalog											
Morton College Courses					NCC Courses			NCC General Education and Comments			
DEPT	NUM	COURSE TITLE	SEM CRED	IAI EQUIV	Dept	Number	Credit	GENERAL EDUCATION			COMMENT
SOC	102	Social Problems	3	S7 901	SOCI	Elective	3	SOC			
SOC	201	Race and Ethnicity	3	S7 903D	SOCI	211	3	SOC	POW		
SOC	220	Introduction to Social Work	3		No	Credit	0				
SPE	101	Principles of Public Speaking	3	C2 900	COMM	110	3				
SPN	101	Beginning Spanish I	4		SPAN	101	4				
SPN	102	Beginning Spanish II	4		SPAN	102	4				
SPN	120	Basic Spanish for Professionals	3		No	Credit	0				
SPN	121	Spanish for Healthcare Professionals	3		No	Credit	0				
SPN	130	Spanish for Heritage Speakers	4		SPAN	Elective	4				
SPN	201	Intermediate Spanish I	4		SPAN	Elective	4				Consult MCL department for placement
SPN	202	Intermediate Spanish II	4	H1 900	SPAN	Elective	4	HUM			Consult MCL department for placement
SPN	215	Spanish Conversation and Composition I	3	H1 900	SPAN	Elective	3	HUM			Consult MCL department for placement
SPN	216	Spanish Conversation and Composition II	3	H1 900	SPAN	Elective	3	HUM			Consult MCL department for placement
SPN	220	Culture and Civilization of Latin America	3		SPAN	337	3	GLO			May not use to fulfill 300-level req in major/minor
SPN	225	Spanish American Literature I	3		SPAN	Elective	3	HUM			
SPN	226	Spanish American Literature II	3		SPAN	335	3	HUM			May not use to fulfill 300-level req in major/minor
SSC	103	Successful Study	1		No	Credit	0				
SSC	140	Women's Studies in Global Perspective	3		GSST	100	3	SOC	POW		
THR	107	Theatre Practice Seminar	3		THEA	Elective	3				
THR	108	Theatre Experience	3	F1 907	THEA	Elective	3	ART			
THR	110	Introduction to Theatre	3	F1 908	THEA	102	3	ART			
THR	112	Theatre Practicum	2		THPR	115	2				A maximum 6 hours of THEA 115 transfer
THR	113	Summer Theatre Workshop	2		THEA	Elective	2				
THR	125	Fundamentals of Acting	3		THEA	150	3				
THR	130	Stage Makeup	2		THST	144	2				
THR	135	Stagecraft	3		THST	141	3				
TPM		Therapeutic Massage			No	Credit	0				No credit transfers from this department