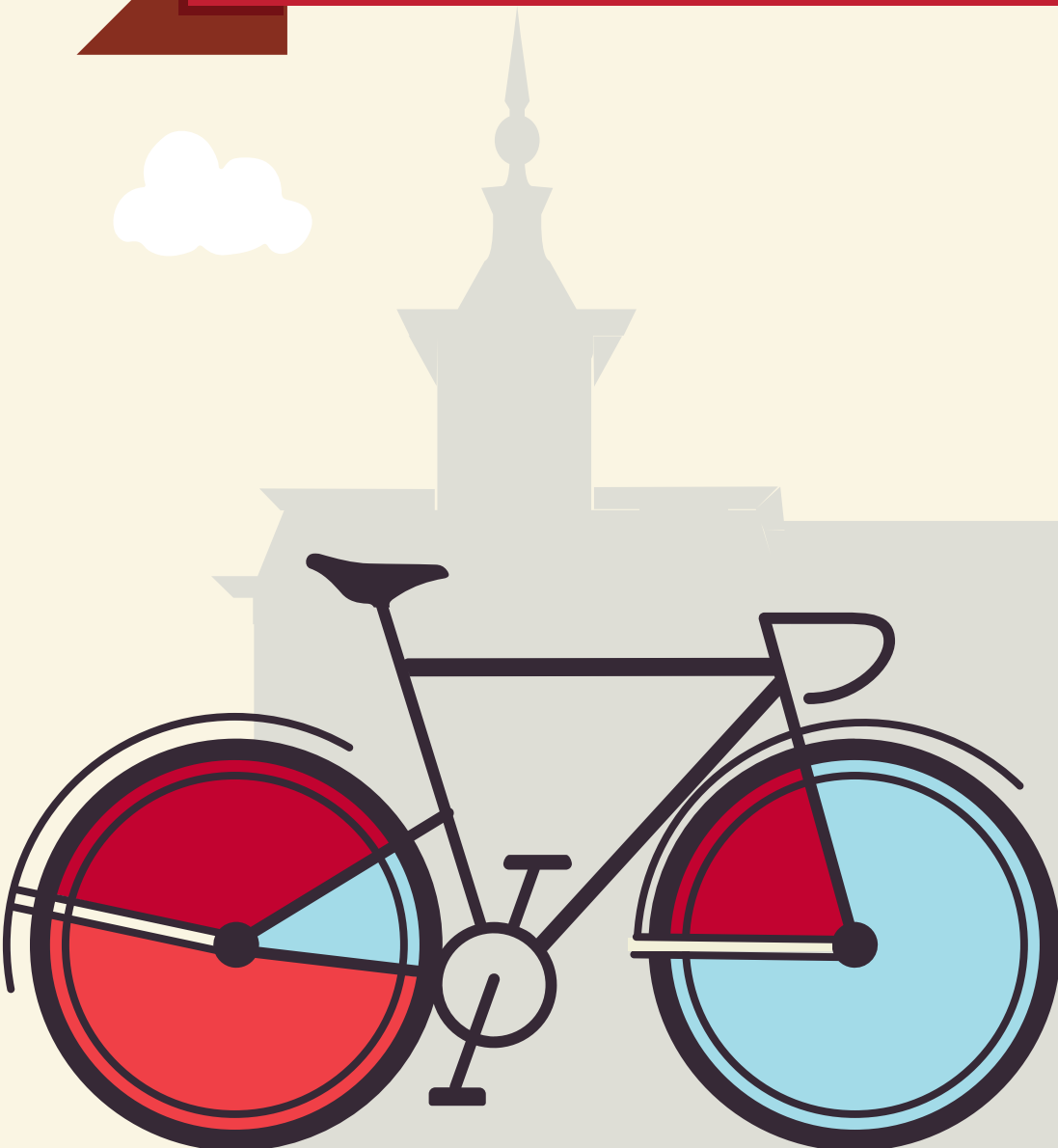


YOUR GUIDE TO TRANSFERRING TO NORTH CENTRAL COLLEGE

ILLINOIS VALLEY COMMUNITY COLLEGE





This guide is based on the 2024-2025 Illinois Valley Community College catalog, and the 2024-2025 North Central College catalog. North Central College reserves the right to alter any information listed in this guide, including the transferability of courses, without notice or obligation. For assistance with this guide, please call the Office of Admission at (630) 637-5800 or email at admissions@noctrl.edu.

How to use this guide: This course substitution guide is designed to help you select courses at Illinois Valley Community College if you plan to transfer to North Central College. Working with your IVCC advisor and NCC transfer admission counselor, refer to this guide to determine courses that meet North Central College requirements in our general education curriculum, academic major and minor requirements, and electives. Your NCC counselor can also provide a major planning worksheet. Listed below is a sample from this guide:

IVCC Course Numbers, Titles, Credit					NCC Equivalent Course Numbers & Credit			NCC General Education Codes			Important Information about courses
DEPT	NUM	COURSE TITLE	CREDIT	IAI EQUIV	DEPT	NUM	CREDIT	GENERAL EDUCATION			COMMENTS
PHY	1001	General Physics	4	P1 900L	PHYS	Elective	4	SCI			
PHY	1200	Applied Physics	3		PHYS	Elective	3				PHY 1001 + PHY 2002 = PHYS 161

The Cardinal Directions general education curriculum at North Central College is as follows, along with the general education codes you will find in this guide. Please note the column to the far right which indicates which of these requirements may be waived (or required) based on the level of education you achieve prior to transferring. For additional details, please reference the NC catalog: <http://catalog.noctrl.edu/content.php?catoid=26&navoid=2582>.

CARDINAL DIRECTIONS CURRICULUM MAP

Requirement	General Education Code	Credit	Comments
Composition	COMP	4 credits	Met with A.A. or A.S. degree
Writing Intensive	WRI	4 credits	Met with A.A. or A.S. degree
Public Speaking	COM	4 credits	Met with A.A. or A.S. degree
Arts	ART	4 credits	Met with A.A. or A.S. degree
Humanities	HUM	4 credits	Met with A.A. or A.S. degree
Social Science	SOC	4 credits	Met with A.A. or A.S. degree
Science	SCI	4 credits	Met with A.A. or A.S. degree
Quantitative Analysis	QUA	4 credits	Met with A.A. or A.S. degree
Power Structures or Global Understanding	POW or GLO	4 credits	Met with A.A. or A.S. degree GLO may be met with Study Abroad at NCC
Ethical Dimensions	ETH	4 credits	Met with A.A. or A.S. degree
Well Being	WEL	2 credits	Met with A.A. or A.S. degree
Experiential (One of the following):	-Community Engaged Learning -Study Away/Study Abroad -Student Research -CARD 400 – Senior Seminar: Liberal Arts and Problems of Today	2 credits	Met with A.A. or A.S. degree
Career Readiness: Preparation and Experiential*	CARD 250 – Career Preparation CARD 300 – Career Experiential	4 credits total	*Must be taken at NC

- *An equivalent 3-credit transfer course may be used to fulfill a General Education requirement.
- One course may fulfill multiple requirements.
- College Transfer Credits are courses taken at a college or university after graduating high school and not earned through AP, IB, or CLEP.
- Only 64 semester hours (96 quarter hours) may transfer from a 2-yr college. Developmental courses (under 100-level) do not transfer.
- Requirements met through an eligible A.A. or A.S. degree may also be met with an eligible A.A.S. degree only if applied to the B.A.S. degree.
- Students with less than 28 transferable hours will need to complete CARD 110, a 1-credit transition course.

COURSE SUBSTITUTIONS FOR STUDENTS TRANSFERRING FROM ILLINOIS VALLEY COMMUNITY COLLEGE TO NORTH CENTRAL COLLEGE

Based on the 2024-2025 Illinois Valley Community College Catalog and the 2024-2025 North Central College Catalog

<i>Illinois Valley Community College Courses</i>												<i>NCC Courses</i>			<i>NCC General Education and Comments</i>				
DEPT	NUM	COURSE TITLE	SEM CRED	IAI EQUIV	Dept	Number	Credit	GENERAL EDUCATION			COMMENT								
ACT	1010	Financial Accounting	3		ACCT	201	3												
ACT	1020	Managerial Accounting	3		ACCT	202	3												
ACT	1210	Fundamentals of Accounting	3		No	Credit	0												
ACT	1240	Payroll Accounting	2		No	Credit	0												
ACT	1280	Quickbooks-Pro Accounting	3		No	Credit	0												
ACT	2020	Cost Accounting	3		ACCT	307	3				May not use to fulfill 300-level req in major/minor								
ACT	2200	Tax Accounting	3		ACCT	330	3				May not use to fulfill 300-level req in major/minor								
ACT	2221	Intermediate Accounting I	3		ACCT	317	3				May not use to fulfill 300-level req in major/minor								
ACT	2222	Intermediate Accounting II	3		ACCT	318	3				May not use to fulfill 300-level req in major/minor								
ACT	2230	Certified Professional Bookkeeper	2		No	Credit	0												
AGR		Agriculture			No	Credit	0				No credit transfers from this department								
ALH	1000	Introduction to Nutrition	3		NUTR	Elective	3												
ALH	1001	Terminology of The Health Field	3		HTSC	156	3												
ALH	1030	Yoga	2		KINE	Activity	2	WEL											
ALH	1031	T'ai Chi	2		KINE	Activity	2												
ALH		All other Allied Health courses			No	Credit	0												
ANT	1000	Introduction to Anthropology	3	S1 900N	ANTH	Elective	3	SOC											
ANT	1002	Cultural Anthropology	3	S1 901N	ANTH	145	3	SOC	GLO										
AOR		Adult Orientation			No	Credit	0				No credit transfers from this department								
ART	1000	Art Survey	3	F2 901	ARTH	100	3	ART	GLO										
ART	1002	Drawing I	3		ARTD	120	3	ART											
ART	1005	Design I	3		ARTD	107	3												
ART	1007	Painting I	3		ARTD	130	3	ART											
ART	1009	Ceramics I	3		ARTD	150	3	ART											
ART	1010	Art Survey II	3	F2 902	ARTH	102	3	ART	GLO										
ART	1012	Drawing II	3		ARTD	220	3												
ART	1015	Design II	3		ARTD	160	3	ART											
ART	2009	Ceramics II	3		ARTD	250	3												
ATO		Automotive Technology			No	Credit	0				No credit transfers from this department								
BIO	1000	The Global Environment	3	L1 905	BIOL	106	3	SCI	GLO										
BIO	1001	General Biology I	4	L1 900L	BIOL	Elective	4	SCI			Only one of BIO 1001 or BIO 1003 transfer								
BIO	1002	General Biology II	4		BIOL	Elective	4	SCI			Only one of BIO 1002 or BIO 1004 transfer								
BIO	1003	Principles of Biology	4	L1 910L	BIOL	Elective	4	SCI			Only one of BIO 1001 or BIO 1003(recommended for major/minor)								
BIO	1004	Biological Diversity	4	L1 910L	BIOL	Elective	4	SCI			Only one of BIO 1002 or BIO 1004(recommended for major/minor)								
BIO	1007	Anatomy & Physiology I	4		BIOL	201	4												
BIO	1008	Anatomy & Physiology II	4		BIOL	202	4												
BIO	1009	Microbiology	4		BIOL	145	4												
BIO	1200	Human Body Structure & Function	3		BIOL	Elective	3												
BUL	2000	The Legal Environment of Business	3		BUSN	205	3	ETH											
BUS	1010	Introduction to Business	3		SBEN	100	3	SOC	ETH	GLO									
BUS	1201	Let's Talk Business	1		No	Credit	0												
BUS	1230	Math for Business & Finance	3		No	Credit	0												
BUS	2000	International Business	3		BUSN	201	3												
BUS	2210	Business Internship	3			Elective					Evaluated individually								
BUS	2260	Integrated Business Operations	3		BUSN	Elective					Evaluated individually								
CAD		Computer Aided Design			No	Credit	0				No credit transfers from this department								
CHM	1000	Introduction to Chemistry	3	P1 902	CHEM	100	3	SCI											
CHM	1004	Chemistry	4	P1 902L	CHEM	Elective	4	SCI											
CHM	1005	Survey of Organic & Biochemistry	4		CHEM	Elective	4												

COURSE SUBSTITUTIONS FOR STUDENTS TRANSFERRING FROM ILLINOIS VALLEY COMMUNITY COLLEGE TO NORTH CENTRAL COLLEGE

Based on the 2024-2025 Illinois Valley Community College Catalog and the 2024-2025 North Central College Catalog

Illinois Valley Community College Courses					NCC Courses			NCC General Education and Comments			
DEPT	NUM	COURSE TITLE	SEM CRED	IAI EQUIV	Dept	Number	Credit	GENERAL EDUCATION		COMMENT	
CHM	1006	General Chemistry I	5	P1 902L	CHEM	121	5	SCI			
CHM	1007	General Chemistry II	5		CHEM	122	5				
CHM	2001	Quantitative Analysis	5		CHEM	310	5			May not use to fulfill 300-level req in major/minor	
CHM	2002	Organic Chemistry I	5		CHEM	251	5				
CHM	2003	Organic Chemistry II	5		CHEM	252	5				
CNC		Computer Numerical Control			No	Credit	0			No credit transfers from this department	
CRJ	1000	Introduction to Criminal Justice	3		SOCI	340	3	GLO		May not use to fulfill 300-level req in major/minor	
CRJ	1001	Introduction to Forensic Science	3		No	Credit	0				
CRJ	1030	Juvenile Delinquency	3		SOCI	221	3	POW			
CRJ	1070	Corrections in America	3		SOCI	Elective	3				
CRJ	1210	Policing in America	3		No	Credit	0				
CRJ	1240	Investigative Photography	3		No	Credit	0				
CRJ	1250	Seminar: Drugs Across America	3		No	Credit	0				
CRJ	1260	Administration of Justice	3		No	Credit	0				
CRJ	1290	Security Procedures I	3		No	Credit	0				
CRJ	1291	Security Procedures II	3		No	Credit	0				
CRJ	1292	Crisis Management	3		No	Credit	0				
CRJ	1293	Weapons Proficiency	3		No	Credit	0				
CRJ	1294	Orientation To Youth Supervision	3		No	Credit	0				
CRJ	2010	Criminal Investigation	3		No	Credit	0				
CRJ	2020	Criminal Law	3		SOCI	Elective	3				
CRJ	2030	Evidence and Criminal Procedures	3		No	Credit	0				
CRJ	2040	Criminology	3		CRIM	100	3				
CRJ	2050	Issues in Criminal Justice	3		No	Credit	0				
CRJ	2250	Ethics in Criminal Justice	3		No	Credit	0				
CRJ	2260	Police Community Relations	3		No	Credit	0				
CRJ	2270	Introduction to Criminalistics	3		No	Credit	0				
CRJ	2280	Criminal Justice Internship	4		No	Credit	0				
CSD	1210	Comprehensive Access	3		INFS	Elective	3				
CSG	1202	Photoshop-SP	3		No	Credit	0				
CSG	1205	Microsoft Power Point-SP	1		No	Credit	0				
CSG	2202	Advanced Photoshop	3		No	Credit	0				
CSI	1002	Intro Business Computer Systems	3		No	Credit	0				
CSI	1007	C++ Programming	4		CSC	160	4			Only one of CSI 1007, CSI 1011, or CSI 1012 transfers	
CSI	1008	Visual Basic.Net Programming	3		CSC	Elective	3				
CSI	1011	Computer Science I	4		CSC	160	4			Only one of CSI 1007, CSI 1011, or CSI 1012 transfers	
CSI	1012	Object Oriented Programming	4		CSC	160	4			Only one of CSI 1007, CSI 1011, or CSI 1012 transfers	
CSI	1013	Discrete Mathematics	3		MATH	230	3				
CSI	1299	Special Topics in Computers	0.5		No	Credit	0				
CSI	2011	Computer Science II	4		CSC	Elective	4				
CSI	2205	Advanced Visual BASIC	3		CSC	Elective	3				
CSI	2222	Computer Information Systems Internship	3			Elective				Evaluated individually	
CSM	1209	Management Information Systems	3		BUSN	Elective	3				
CSM		All other Comp Science Management Courses			No	Credit	0				
CSN	1200	Using Internet and the World Wide Web	3		No	Credit	0				
CSN	1201	Web Page Development & HTML	3		ARTD	245	3			Only one of CSN 1201 or GDT 1204 transfer	
CSN	1202	Web Site Development	3		INFS	Elective	3				
CSN	1225	Core Networking Technologies	3		No	Credit	0				
CSN	1230	Network Administration I	3		No	Credit	0				
CSN	1231	Network Administration II	3		No	Credit	0				

COURSE SUBSTITUTIONS FOR STUDENTS TRANSFERRING FROM ILLINOIS VALLEY COMMUNITY COLLEGE TO NORTH CENTRAL COLLEGE

Based on the 2024-2025 Illinois Valley Community College Catalog and the 2024-2025 North Central College Catalog

Illinois Valley Community College Courses					NCC Courses			NCC General Education and Comments			
DEPT	NUM	COURSE TITLE	SEM CRED	IAI EQUIV	Dept	Number	Credit	GENERAL EDUCATION		COMMENT	
CSN	1233	Network Administration III	3		No	Credit	0				
CSN	1234	Securing/Analyzing TCP/IP Networks	3		No	Credit	0				
CSN	2200	Advanced Internet Topics	3			Elective				Evaluated individually	
CSN	2210	Wireless Networks	3		No	Credit	0				
CSN	2222	Computer Networking Internship	3			Elective				Evaluated individually	
CSN	2250	Speciality Servers	3		No	Credit	0				
CSN	2260	Networking Routing	3		No	Credit	0				
CSO	1201	DOS for Windows	2		No	Credit	0				
CSO	1202	Microsoft Windows	2		No	Credit	0				
CSO	1203	Microsoft Windows - SP	1		No	Credit	0				
CSO	2200	UNIX Operating System	3		No	Credit	0				
CSO	2202	Comprehensive Windows	3		No	Credit	0				
CSP	1201	Microsoft Works - SP	1		No	Credit	0				
CSP	1203	Microsoft Office Professional I	3		No	Credit	0				
CSP	1204	Microsoft Outlook	3		No	Credit	0				
CSP	1206	Computer Skills for College Success	1		No	Credit	0				
CSP	1210	Basic Computer Skills for the Workplace	1		No	Credit	0				
CSP	1230	Computer Keyboarding Applications	2		No	Credit	0				
CSP	1231	Adv Keyboard/Document Formatting	3		No	Credit	0				
CSP	2200	CompTIA A+	4		No	Credit	0				
CSP	2201	Help Desk/User Support	2		No	Credit	0				
CSP	2203	Microsoft Office Professional II	3		No	Credit	0				
CSP	2204	Microsoft Office Professional III	3		No	Credit	0				
CSP	2210	Advanced PC Troubleshhoting & Repair	2		No	Credit	0				
CSP	2222	Business Technical Internship	4			Elective				Evaluated Individually	
CSP	2230	A+ Certification	1		No	Credit	0				
CSS	1200	Microsoft Excel - SP	1		No	Credit	0				
CSS	1210	Comprehensive Excel	3		No	Credit	0				
CSS	2200	Advanced Excel	1		No	Credit	0				
CST		Citizenship			No	Credit	0			No credit transfers from this department	
DFT	1200	Basic Drafting	3		ENGR	Elective	3				
DFT	1203	Machine Blueprint Reading	3		No	Credit	0				
DFT	1213	Construction Print Reading	3		No	Credit	0				
DLA		Dental Assisting			No	Credit	0				
ECE	1000	Introduction to Early Childhood Education	3		NCCC	Elective	3				
ECE	1005	Health, Safety and Nutrition	3		KINE	Elective	3				
ECE	1027	Child, Family, School & Community	3		No	Credit	0				
ECE	1201	Child Guidance/Child Study	3		NCCC	Elective	3				
ECE	1202	Foundations & Trends: Infant/Toddler/Two	3		No	Credit	0				
ECE	1203	Creative Activities	3		No	Credit	0				
ECE	1204	Dev Appropriate Practices Inf/ToddlerS/Two's	3		No	Credit	0				
ECE	1205	Mathematics for Young Children	3		NCCC	Elective	3				
ECE	2001	School Age	3		No	Credit	0				
ECE	2202	Curriculum Programming	3		EDUC	Elective	3				
ECE	2203	Supervision and Administration	4		No	Credit	0				
ECE	2004	Project Appraoach/Documentation	3		No	Credit	0				
ECE	2005	The Exceptional Learner	3		EDUC	330	3			May not use to filfill 300-level req in major/minor	
ECE	2006	E-Portfolio	1		No	Credit	0				
ECE	2207	Observation and Assessment	3		NCCC	Elective	3				
ECE	2208	Language Development	3		NCCC	Elective	3				

COURSE SUBSTITUTIONS FOR STUDENTS TRANSFERRING FROM ILLINOIS VALLEY COMMUNITY COLLEGE TO NORTH CENTRAL COLLEGE

Based on the 2024-2025 Illinois Valley Community College Catalog and the 2024-2025 North Central College Catalog

Illinois Valley Community College Courses					NCC Courses			NCC General Education and Comments				
DEPT	NUM	COURSE TITLE	SEM CRED	IAI EQUIV	Dept	Number	Credit	GENERAL EDUCATION			COMMENT	
ECE	2219	Practicum/Student Teaching	5		No	Credit	0					
ECN	1202	Fundamentals of Economics	3		ECON	Elective	3	SOC				
ECN	2002	Principles of Microeconomics	3	S3 902	ECON	200	3	SOC				
ECN	2003	Principles of Macroeconomics	3	S3 901	ECON	205	3	SOC				
ECN	2004	Business Statistics	3	M1 902	BUSN	265	3	QUA			Only one of ECN 2004 or MTH 1000 transfer	
ECN	2005	Global Economic Geography	3		ECON	100	3	SOC				
EDC	1000	Introduction to Education	3		EDUC	101	3					
EDC	1201	Spec. Topics in Instructional Technology	0.5		No	Credit	0					
EDC	1202	Instructional Tech & Classroom Integration	1		No	Credit	0					
EDC	1203	Educational Technology	3		EDUC	235	3					
EDC	1205	Introduction to Community College Teaching	2		No	Credit	0					
EDC	2000	Educational Psychology	3		PSYC	205	3					
EDC	2003	Clinical Experience in Education	3		EDUC	Elective	3				Max 30 clinical hours transfer	
EDC	2006	Multicultural Education	3		EDUC	Elective	3					
EGR	1000	Engineering Graphics I	4		ENGR	Elective	4					
ELE		Electricity			No	Credit	0				No credit transfers from this department	
ELT		Electronics Courses			No	Credit	0				No credit transfers from this department	
EMS		Emergency Medical Services			No	Credit	0				No credit transfers from this department	
ENG		All Courses Numbered Below 1000			No	Credit	0					
ENG	1001	English Composition I	3	C1 900	ENGL	110	3	COMP				
ENG	1002	English Composition II	3	C1 901	ENGL	110	3	COMP			or WRI if ENG 1001 is complete	
ENG	1003	Creative Writing	3		ENGL	210	3	ART				
ENG	1200	Grammar Skills for the Workplace	2		No	Credit	0					
ENG	1203	Business & Industrial Communication	0.5		No	Credit	0					
ENG	1205	Writ Comm Skills for Bus Industry & Tech	3		No	Credit	0					
ENG	2000	Technical & Business Writing	3		ENGL	Elective	3					
EOR		ESL Orientation			No	Credit	0				No credit transfers from this department	
ESL		English as a Second Language			No	Credit	0				No credit transfers from this department	
FEN	1000	Conversational French I	3		FREN	Elective	3					
FEN	1001	Elementary French I	4		FREN	101	4					
FEN	1002	Elementary French II	4		FREN	102	4					
FEN	1010	Conversational French II	3		FREN	Elective	3					
FEN	2001	Intermediate French I	4		FREN	201	4					
FEN	2002	Intermediate French II	4	H1 900	FREN	202	4	HUM				
FEN	2003	Composition & Conversation	3		FREN	Elective	3	HUM			Consult MCL department for placement	
FEN	2004	Survey of French Literature	3		FREN	Elective	3	HUM				
FIN	1200	Principles of Finance	3		FINA	Elective	3					
FLM	2009	The Art of the Film	3	F2 902	FILM	100	3	ART				
FLM	2010	Film, Art & Literature	3		FILM	Elective	3	ART				
FRS		Forensic Science			No	Credit	0				No credit transfers from this department	
FSS	1200	Applied Food Service Sanitation			No	Credit	0				No credit transfers from this department	
GDT	1201	Introduction to Page Layout	3		No	Credit	0					
GDT	1202	Photoshop I for Graphic Design	3		No	Credit	0					
GDT	1203	Printing Technology	3		No	Credit	0					
GDT	1204	Web Design for Graphic Design	3		ARTD	245	3				Only one of CSN 1201 or GDT 1204 transfer	
GDT	1205	Introduction to Social Media Marketing	1		No	Credit	0					
GDT	1207	Digital Photography	3		ARTD	275	3					
GDT	1208	Introduction to Facebook	1		No	Credit	0					
GDT	1222	Introduction to Illustrator	3		ARTD	Elective	3					
GDT	2006	Visual Communications I	3		No	Credit	0					

COURSE SUBSTITUTIONS FOR STUDENTS TRANSFERRING FROM ILLINOIS VALLEY COMMUNITY COLLEGE TO NORTH CENTRAL COLLEGE

Based on the 2024-2025 Illinois Valley Community College Catalog and the 2024-2025 North Central College Catalog

<i>Illinois Valley Community College Courses</i>												<i>NCC Courses</i>			<i>NCC General Education and Comments</i>				
DEPT	NUM	COURSE TITLE	SEM CRED	IAI EQUIV	Dept	Number	Credit	GENERAL EDUCATION			COMMENT								
GDT	2202	Photoshop II	3		INFS	Elective	3												
GDT	2205	Graphic Design Internship I	1			Elective					Evaluated individually								
GDT	2206	Graphic Design Internship II	1			Elective					Evaluated individually								
GDT	2207	Graphic Design Internship III	1			Elective					Evaluated individually								
GDT	2211	Design Solutions I	4		MEDI	Elective	4												
GDT	2214	Multimedia I	3		MEDI	Elective	3												
GDT	2216	Visual Communications II	3		MEDI	Elective	3												
GDT	2221	Graphic Design Solutions II	4		MEDI	Elective	4												
GDT	2232	Illustrator II	3		ARTD	Elective	3												
GED		General Education Development	0		No	Credit	0				No credit transfers from this department								
GEG	1001	Weather and Climate	4	P1 909L	SCI	Elective	4	SCI											
GEG	1002	Physical Geography	4	P1 909L	SCI	Elective	4	SCI											
GEG	1003	Cultural Geography	3	S4 900N	SOCI	Elective	3	SOC											
GEG	1004	World Regional Geography	3	S4 900N	SOCI	Elective	3	SOC											
GEG	1005	Introduction to Astronomy	4	P1 906L	PHYS	110	4	SCI											
GEG	1007	Planetary & Space Science	3		SCIE	Elective	3												
GEL	1005	Natural Disasters	3	P1 908L	SCIE	Elective	3	SCI											
GEL	1006	Introduction to Oceanography	3	P1 905	SCIE	Elective	3	SCI											
GEL	1007	Environmental Geology	4	P1 908L	SCIE	Elective	4	SCI											
GEL	1008	Physical Geology	4	P1 907L	SCIE	Elective	4	SCI											
GEL	1009	Historical Geology	4	L1 907L	SCIE	Elective	4	SCI											
GEN	2000	Women Through Cultures and Centuries	3	H9 900	GSST	Elective	3	HUM											
GEN	2001	Women in Ancient Cultures	3	HF 907D	GSST	Elective	3	HUM											
GEN	2002	Women in Literature	3	H3 911D	GSST	234	3	HUM	POW										
GER	1000	Conversational German	3		GRMN	Elective	3												
GER	1001	Elementary German I	4		GRMN	101	4												
GER	1002	Elementary German II	4		GRMN	102	4												
GER	1010	Conversational German II	3		GRMN	Elective	3				Consult MCL department for placement								
GER	2001	Intermediate German I	4		GRMN	201	4												
GER	2002	Intermediate German II	4	H1 900	GRMN	202	4	HUM											
GER	2003	Composition & Conversation	3		GRMN	Elective	3	HUM			Consult MCL department for placement								
GER	2004	Survey of German Literature	3		GRMN	325	3	HUM			May not use to fulfill 300-level req in major/minor								
GFT		GED Fast Track			No	Credit	0				No credit transfers from this department								
GNT		Certified Production Technician			No	Credit	0				No credit transfers from this department								
GOR		GED Orientation			No	Credit	0				No credit transfers from this department								
HFA	1000	Appreciation of Arts	3		NCCC	Elective	3	HUM											
HFA	1007	Special Topics in Humanities and Fine Arts	0.5			Elective					Evaluated individually								
HFA	1008	British Culture and Society	3		NCCC	Elective	3	HUM											
HFA	1018	Austrian Civilization and Culture	3		NCCC	Elective	3	HUM											
HFA	1028	Contrasting Cultures	3		NCCC	Elective	3	HUM											
HFA	1201	S/T: Learning Community Seminar	1		No	Credit													
HFA	2003	Mythology	3		CLSS	250	3	HUM											
HIS	1000	History of Western Civilization I	3	H2 901	HIST	101	3	HUM											
HIS	1001	History of Western Civilization II	3	H2 902	HIST	102	3	HUM	GLO										
HIS	1002	British History I	3		HIST	Elective	3												
HIS	1003	History Eastern Civilization	3		HIST	165		HUM	GLO										
HIS	1004	British History II	3		HIST	Elective	3												
HIS	1005	American Labor History	3		HIST	Elective	3												
HIS	1006	African American History	3		HIST	112	3												
HIS	2000	United States History to 1865	3	S2 900	HIST	Elective	3	SOC	GLO	POW									

COURSE SUBSTITUTIONS FOR STUDENTS TRANSFERRING FROM ILLINOIS VALLEY COMMUNITY COLLEGE TO NORTH CENTRAL COLLEGE

Based on the 2024-2025 Illinois Valley Community College Catalog and the 2024-2025 North Central College Catalog

Illinois Valley Community College Courses					NCC Courses			NCC General Education and Comments				
DEPT	NUM	COURSE TITLE	SEM CRED	IAI EQUIV	Dept	Number	Credit	GENERAL EDUCATION			COMMENT	
HIS	2001	United States History from 1865	3	S2 901	HIST	Elective	3	SOC	GLO	POW		
HIS	2002	History of Latin America	3	S2 910N	HIST	175	3	HUM				
HIS	2005	History & Culture of Third World	3		HIST	Elective		HUM				
HIS	2006	History Middle Eastern Civilization	3	S2 919N	HIST	180	3	SOC	ETH	GLO		
HIS	2007	History & Civilization of China	3	S2 914N	HIST	260	3	HUM	GLO			
HIS	2008	Modern Africa	3	S2 906N	HIST	185	3	HUM				
HIS	2010	Special Topics in History	3			Elective					Evaluated individually	
HON	1001	Honors Orientation	2		No	Credit	0					
HON	1002	Honors Portfolio	1		No	Credit	0					
HON	1003	Honors Project	1		No	Credit	0					
HON	1009	The Honors Program Colloquium	1		No	Credit	0					
HOR		Horticulture			No	Credit	0				No credit transfers from this department	
HPE	1000	Wellness	1		HTSC	Elective	1	WEL			WEL designation only if HPE 1001 is complete	
HPE	1001	Wellness Lab	1		HTSC	Elective	1	WEL			WEL designation only if HPE 1000 is complete	
HPE	1002	Professional Orientation	2		KINE	Elective	2					
HPE	1003	Personal and Community Health	2		HTSC	Elective	2					
HPE	1004	First Aid	2		HTSC	100	2					
HPE	1005	Coaching of Basketball	2		KINE	Elective	2					
HPE	1006	Coaching of Football	2		KINE	Elective	2					
HPE	1007	Coaching of Baseball	2		KINE	Elective	2					
HPE	1008	Physical Education Activities for Elem Children	2		KINE	Elective	2					
HPE	1020	Physical Fitness I	1		KINE	Activity	1				A maximum 8 hours of KINE activity transfer	
HPE	1021	Physical Fitness II	1		KINE	Activity	1				A maximum 8 hours of KINE activity transfer	
HPE	1022	Weight Training & Conditioning	1		KINE	Activity	1				A maximum 8 hours of KINE activity transfer	
HPE	1023	Advanced Weight Training & Conditioning	1		KINE	Activity	1				A maximum 8 hours of KINE activity transfer	
HPE	1024	Golf	1		KINE	111	1				A maximum 8 hours of KINE activity transfer	
HPE	1200	Personal Fitness Training	1		KINE	Elective	1					
HPE	1201	Physical Fitness in the Work Place I	1		KINE	Activity	1				A maximum 8 hours of KINE activity transfer	
HPE	1301	Physical Fitness in the Work Place II	1		KINE	Activity	1				A maximum 8 hours of KINE activity transfer	
HPE	1302	Physical Fitness in the Work Place III	1		KINE	Activity	1				A maximum 8 hours of KINE activity transfer	
HPE	1303	Physical Fitness in the Work Place IV	1		KINE	Activity	1				A maximum 8 hours of KINE activity transfer	
HPE	1304	Physical Fitness in the Work Place V	1		KINE	Activity	1				A maximum 8 hours of KINE activity transfer	
HPE	1305	Fitness in Work Place VI	1		KINE	Activity	1				A maximum 8 hours of KINE activity transfer	
HPE	1306	Fitness in Work Place VII	1		KINE	Activity	1				A maximum 8 hours of KINE activity transfer	
HPE	1307	Fitness in Work Place VIII	1		KINE	Activity	1				A maximum 8 hours of KINE activity transfer	
HPE	1308	Fitness in Work Place IX	1		KINE	Activity	1				A maximum 8 hours of KINE activity transfer	
HPE	1309	Fitness in Work Place X	1		KINE	Activity	1				A maximum 8 hours of KINE activity transfer	
HPE	1310	Fitness in Work Place XI	1		KINE	Activity	1				A maximum 8 hours of KINE activity transfer	
HPE	2020	Physical Fitness III	1		KINE	Activity	1				A maximum 8 hours of KINE activity transfer	
HPE	2021	Physical Fitness IV	1		KINE	Activity	1				A maximum 8 hours of KINE activity transfer	
HRT		Horticulture			No	Credit	0				No credit transfers from this department	
HSR		Human Services Courses			No	Credit	0				No credit transfers from this department	
HVC		Heating, AC, Refrigeration			No	Credit	0				No credit transfers from this department	
IMT		Industrial Maintenance			No	Credit	0				No credit transfers from this department	
ITL	1000	Conversational Italian I	3		LANG	101	3					
ITL	1010	Conversational Italian II	3		LANG	102	3					
JRN	1001	Introduction to the Mass Media	3		COMM	185	3	SOC	GLO	POW		
JRN	1002	Reporting	3		MEDI	225	3					
JRN	1003	Advanced Reporting	3		MEDI	Elective	3					
JRN	1090	Introduction to Advertising	3		MEDI	Elective	3					

COURSE SUBSTITUTIONS FOR STUDENTS TRANSFERRING FROM ILLINOIS VALLEY COMMUNITY COLLEGE TO NORTH CENTRAL COLLEGE

Based on the 2024-2025 Illinois Valley Community College Catalog and the 2024-2025 North Central College Catalog

Illinois Valley Community College Courses					NCC Courses			NCC General Education and Comments				
DEPT	NUM	COURSE TITLE	SEM CRED	IAI EQUIV	Dept	Number	Credit	GENERAL EDUCATION			COMMENT	
JRN	2000	Journalism/Communications Internship	1			Elective					Evaluated individually	
LDS	1000	Leadership Development Studies	3		LEAD	Elective	3					
LIB		Research Strategies			No	Credit	0				No credit transfers from this department	
LIT	2000	Survey of American Literature I	3	H3 914	ENGL	Elective	3	HUM				
LIT	2001	Major English Writers I	3	H3 912	ENGL	202	3	HUM				
LIT	2004	Drama/Poetry	3		ENGL	Elective	3					
LIT	2005	Children's Literature	3	H3 918	ENGL	126	3	HUM	ART	ETH		
LIT	2006	World Literature in Translations I	3	H3 906	ENGL	Elective	3	HUM				
LIT	2010	Survey American Literature II	3	H3 915	ENGL	208	3	HUM				
LIT	2011	Major English Writers II	3	H3 913	ENGL	206	3	HUM				
LIT	2013	Fiction	3	H3 901	ENGL	Elective	3	HUM				
LIT	2021	Introduction to Shakespeare I	3	H3 905	ENGL	302	3	HUM			May not use to fulfill 300-level req in major/minor	
LIT	2023	Science Fiction	3	H3 901	ENGL	Elective	3	HUM				
LIT	2031	Intro to Shakespeare II	3		ENGL	Elective		HUM				
MET		Manufacturing Technology			No	Credit	0				No credit transfers from this department	
MGT	1230	Owning and Operating a Small Business	3		BUSN	Elective	3					
MGT	2010	Principles of Management	3		MGMT	305	3				May not use to fulfill 300-level req in major/minor	
MGT	2220	Principles of Supervision	3		MGMT	Elective	3					
MGT	2230	The New Business Venture	3		BUSN	170	3					
MKT	1210	Principles of Marketing	3		MKTG	300	3				May not use to fulfill 300-level req in major/minor	
MKT	1220	Sales/Retailing	3		MKTG	Elective	3					
MKT	2210	Principles of Advertising	3		MKTG	Elective	3					
MTH		All Courses Numbered Below 1000			No	Credit	0					
MTH	1000	Math for the Liberal Arts	3	M1 904	MATH	120	3	QUA				
MTH	1003	College Algebra	3		MATH	Elective	3				Only one of MTH 1003 + 1004 or MTH 1005 transfers	
MTH	1004	Trigonometry	3		MATH	Elective	3				Only one of MTH 1003 + 1004 or MTH 1005 transfers	
MTH	1005	Precalculus	5		MATH	140	5				Only one of MTH 1003 + 1004 or MTH 1005 transfers	
MTH	1006	Finite Mathematics	4	M1 906	MATH	130	4	QUA				
MTH	1007	Calculus for Business & Social Science	4	M1 900	MATH	Elective	4	QUA				
MTH	1008	General Elementary Statistics	3	M1 902	PSYC	250	3	QUA			Only one of ECN 2004 or MTH 1008 transfer	
MTH	1009	Structure of Number Systems I	3		MATH	107	3					
MTH	1010	Structure of Number Systems II	3	M1 903	MATH	108	3	QUA				
MTH	1011	Dimensions Mathematical Understanding	3		No	Credit	0					
MTH	1200	Metric & English Measurement	1		No	Credit						
MTH	1206	Technical Mathematics I	3		No	Credit	0					
MTH	1208	Applied Mathematics	3		MATH	Elective	3					
MTH	1209	Applied Mathematics II	5		MATH	Elective	5					
MTH	2001	Calculus and Analytic Geometry I	4	M1 900	MATH	151	4	QUA				
MTH	2002	Calculus and Analytic Geometry II	4	M1 900	MATH	152	4	QUA				
MTH	2003	Calculus and Analytic Geometry III	3	M1 900	MATH	253	3	QUA				
MTH	2007	Differential Equations	3		MATH	315	3				May not use to fulfill 300-level req in major/minor	
MUP	1001	Collegiate Chorale	1		MUEN	111	1					
MUP	1002	Wind Ensemble	1		MUEN	113	1					
MUP	1003	Percussion Ensemble	1		MUEN	Elective	1					
MUP	1004	Jazz Ensemble	1		MUEN	120	1					
MUP	1005	Class Piano	0.5		MUAL	Elective	0.5					
MUP	1011	Chamber Singers	1		MUEN	190	1					
MUP	1012	Flute Ensemble	1		MUEN	Elective	1					
MUP	1021	Swing Choir	1		MUEN	Elective	1					
MUP	1031	Class Voice	1		MUAL	Elective	1					

COURSE SUBSTITUTIONS FOR STUDENTS TRANSFERRING FROM ILLINOIS VALLEY COMMUNITY COLLEGE TO NORTH CENTRAL COLLEGE

Based on the 2024-2025 Illinois Valley Community College Catalog and the 2024-2025 North Central College Catalog

Illinois Valley Community College Courses					NCC Courses			NCC General Education and Comments				
DEPT	NUM	COURSE TITLE	SEM CRED	IAI EQUIV	Dept	Number	Credit	GENERAL EDUCATION		COMMENT		
MUP	2001	Applied Music: Vocal	2		MUAL	100	2					
MUP	2003	String Ensemble	1		MUEN	Elective	1					
MUP	2005	Applied Music: Piano	2		MUAL	110	2					
MUP	2013	Applied Music: Guitar	2		MUAL	185	2					
MUP	2014	Applied Music: Trumpet	2		MUAL	141	2					
MUP	2015	Applied Music: Percussion	2		MUAL	160	2					
MUP	2022	Applied Music: Oboe	2		MUAL	121	2					
MUP	2023	Applied Music: Violin	2		MUAL	180	2					
MUP	2024	Applied Music: Trombone	2		MUAL	152	2					
MUP	2025	Applied Music: Drum Set	2		MUAL	161	2					
MUP	2032	Applied Music: Clarinet	2		MUAL	122	2					
MUP	2033	Applied Music: Viola	2		MUAL	181	2					
MUP	2034	Applied Music: French Horn	2		MUAL	140	2					
MUP	2042	Applied Music: Bassoon	2		MUAL	123	2					
MUP	2043	Applied Music: Bass	2		MUAL	183	2					
MUP	2044	Applied Music: Tuba	2		MUAL	143	2					
MUP	2052	Applied Music: Saxophone	2		MUAL	124	2					
MUP	2053	Applied Music: Cello	2		MUAL	182	2					
MUP	2062	Applied Music: Flute	2		MUAL	120	2					
MUP	2072	Applied Music: Piccolo	3		MUAL	Elective	2					
MUS	1000	Music Appreciation	3	F1 901	MUSI	150	3	HUM				
MUS	1001	Fundamentals of Music	2		MUSI	Elective	2					
MUS	1002	Music Theory I	4		MUSI	101+108	4					
MUS	1012	Music Theory II	4		MUSI	102	4					
MUS	1090	Introduction to American Music	3		MUSI	Elective	3					
MUS	2002	Music Theory III	4		MUSI	201+208	4					
MUS	2012	Music Theory IV	4		MUSI	202	4					
NSM	1201	Learning Communities Seminar	1		No	Credit	0					
NUR		Nursing			No	Credit	0			No credit transfers from this department		
PHL	1001	Introduction to Philosophy	3	H4 900	PHIL	100	3	HUM	ETH			
PHL	1002	Ethics	3	H4 904	PHIL	110	3	HUM	ETH			
PHL	1003	Philosophy of Religion	3	H4 905	PHIL	360	3	HUM	ETH	May not use to fulfill 300-level req in major/minor		
PHL	1005	Logic	3	H4 906	PHIL	230	3	QA				
PHL	1013	Comparative Religions	3	H5 904N	RELG	100	3	HUM	GLO			
PHY	1001	General Physics	4	P1 900L	PHYS	Elective	4	SCI				
PHY	1200	Applied Physics	3		PHYS	Elective	3			PHY 1001 + PHY 2001 = PHYS 161		
PHY	1201	Applied Physics II	3		PHYS	Elective	3					
PHY	2001	General Physics	4	P1 900L	PHYS	Elective	4	SCI		PHY 1001 + PHY 2002 = PHYS 162		
PHY	2002	General Physics	4		PHYS	Elective	4					
PHY	2003	General Physics	5	P1 900L	PHYS	131	5	SCI		No credit if course completed after PHY 1001		
PHY	2004	General Physics	5		PHYS	132	3			No credit if course completed after PHY 2001		
PSI	1000	American National Government	3	S5 900	POLS	101	3	SOC	POW			
PSI	1002	State and Local Government	3	S5 902	POLS	Elective	3	SOC				
PSI	1003	Introduction to Global Studies	3		POLS	Elective	3	SOC				
PSI	2000	International Relations	3	S5 904N	POLS	102	3	SOC	GLO			
PSI	2001	European Politics	3		POLS	Elective	3					
PSI	2002	Economics and Politics	3		POLS	Elective	3					
PSY	1000	General Psychology	3	S6 900	PSYC	100	3	SOC				
PSY	2000	Personality	3		PSYC	320	3			May not use to fulfill 300-level req in major/minor		
PSY	2001	Child Growth and Development	3	S6 903	PSYC	210	3	SOC				

COURSE SUBSTITUTIONS FOR STUDENTS TRANSFERRING FROM ILLINOIS VALLEY COMMUNITY COLLEGE TO NORTH CENTRAL COLLEGE

Based on the 2024-2025 Illinois Valley Community College Catalog and the 2024-2025 North Central College Catalog

Illinois Valley Community College Courses					NCC Courses			NCC General Education and Comments				
DEPT	NUM	COURSE TITLE	SEM CRED	IAI EQUIV	Dept	Number	Credit	GENERAL EDUCATION		COMMENT		
PSY	2004	Social Psychology	3	S8 900	PSYC	240	3	SOC				
PSY	2005	Human Sexuality	3		PSYC	Elective	3					
PSY	2006	Abnormal Psychology	3		PSYC	324	3			May not use to fulfill 300-level req in major/minor		
PSY	2200	Human Relations in the World of Work	3		No	Credit	0					
REA		Real Estate			No	Credit	0			No credit transfers from this department		
RED		Reading			No	Credit	0			No credit transfers from this department		
SDT		Student Development			No	Credit	0			No credit transfers from this department		
SFC		Strategies for College	0		No	Credit	0			No credit transfers from this department		
SOC	1000	Introduction to Sociology	3	S7 900	SOCI	100	3	SOC	POW			
SOC	1002	Marriage and Family	3	S7 902	SOCI	342	3	GLO		May not use to fulfill 300-level req in major/minor		
SOC	2000	Social and Cultural Change	3		SOCI	Elective	3					
SOC	2001	Social Problems	3	S7 901	SOCI	Elective	3	SOC				
SPH	1001	Fundamentals of Speech	3	C2 900	COMM	100	3					
SPH	1002	Discussion & Debate	3		COMM	285	3	HUM	ETH			
SPH	1003	Intercultural Communication	3		COMM	317	3	SOC	GLO	May not use to fulfill 300-level req in major/minor		
SPH	1204	Oral Comm Skills Business, Industry, & Tech	3		No	Credit	0					
SPN	1000	Conversational Spanish I	3		SPAN	Elective	3					
SPN	1001	Elementary Spanish I	4		SPAN	101	4					
SPN	1002	Elementary Spanish II	4		SPAN	102	4					
SPN	1010	Conversational Spanish for Professionals	3		SPAN	Elective	3					
SPN	1020	Conversational Spanish Profess - Mod 1	1		SPAN	Elective	1					
SPN	1030	Conversational Spanish Profess - Mod 2	1		SPAN	Elective	1					
SPN	1040	Conversational Spanish Profess - Mod 3	1		SPAN	Elective	1					
SPN	1200	Conversational Spanish for Medical Personnel	3		No	Credit	0					
SPN	1300	Special Topics in Command Spanish	0.5		No	Credit	0					
SPN	2001	Intermediate Spanish I	4		SPAN	201	4					
SPN	2002	Intermediate Spanish II	4	H1 900	SPAN	202	4	HUM				
SPN	2003	Composition and Grammar	3		SPAN	Elective	3			Consult MCL department for placement		
SPN	2004	Survey of Spanish Literature	3		SPAN	Elective	3	HUM		SPAN 325 if taken in fall; SPAN 335 if taken in spring; may not fulfill 300-level major/minor requirement		
SPN	2005	Survey of Spanish-American Literature	3		SPAN	Elective	3	HUM				
SSK		Study Skills	1		No	Credit	0					
TAM	2001	Theoretical & Applied Mechanics	5		PHYS	251	5					
TDT		Truck Driver Training			No	Credit	0			No credit transfers from this department		
THE	1005	Theatre Play Production	3		THEA	115	3			A maximum 6 hours of THEA 115 transfer		
THE	1006	Acting	3		THEA	101	3					
THE	2001	Oral Interpretation	3		COMM	Elective	3					
THE	2002	Introduction to Theatre	3	F1 908	THEA	175	3	ART				
THE	2005	Theatre Play Production	3		THEA	115	3			A maximum 6 hours of THEA 115 transfer		
THM		Therapeutic Massage			No	Credit	0			No credit transfers from this department		
WHS		Warehousing			No	Credit	0			No credit transfers from this department		
WLD		Welding			No	Credit	0			No credit transfers from this department		
WND		Wind Energy			No	Credit	0			No credit transfers from this department		