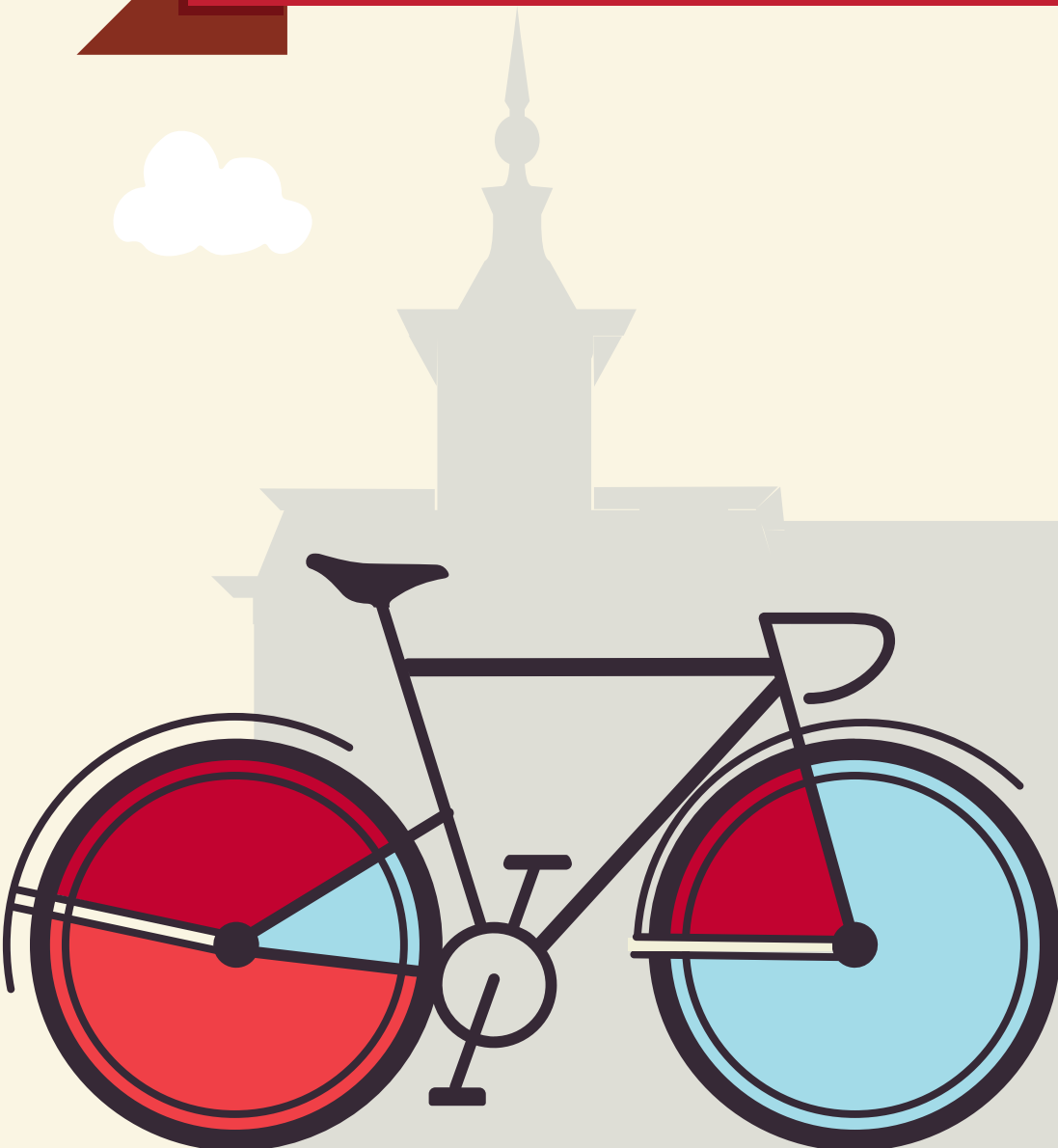


YOUR GUIDE TO TRANSFERRING TO NORTH CENTRAL COLLEGE

KISHWAUKEE COLLEGE





This guide is based on the 2024-2025 Kishwaukee College catalog, and the 2024-2025 North Central College catalog. North Central College reserves the right to alter any information listed in this guide, including the transferability of courses, without notice or obligation. For assistance with this guide, please call the Office of Admission at (630) 637-5800 or email at admissions@noctrl.edu.

How to use this guide: This course substitution guide is designed to help you select courses at Kishwaukee College if you plan to transfer to North Central College. Working with your KC advisor and NCC transfer admission counselor, refer to this guide to determine courses that meet North Central College requirements in our general education curriculum, academic major and minor requirements, and electives. Your NCC counselor can also provide a major planning worksheet. Listed below is a sample from this guide:

KC Course Numbers, Titles, Credit					NCC Equivalent Course Numbers & Credit			NCC General Education Codes			Important Information about courses
DEPT	NUM	COURSE TITLE	CREDIT	IAI EQUIV	DEPT	NUM	CREDIT	GENERAL EDUCATION			COMMENTS
ANT	120	Introduction to Anthropology	3	S1 900N	ANTH	Elective	3	SOC			
ANT	203	Introduction to Archeology	3	S1 903	ANTH	165	3	SOC			

The Cardinal Directions general education curriculum at North Central College is as follows, along with the general education codes you will find in this guide. Please note the column to the far right which indicates which of these requirements may be waived (or required) based on the level of education you achieve prior to transferring. For additional details, please reference the NC catalog: <http://catalog.noctrl.edu/content.php?catoid=26&navoid=2582>.

CARDINAL DIRECTIONS CURRICULUM MAP

Requirement	General Education Code	Credit	Comments
Composition	COMP	4 credits	Met with A.A. or A.S. degree
Writing Intensive	WRI	4 credits	Met with A.A. or A.S. degree
Public Speaking	COM	4 credits	Met with A.A. or A.S. degree
Arts	ART	4 credits	Met with A.A. or A.S. degree
Humanities	HUM	4 credits	Met with A.A. or A.S. degree
Social Science	SOC	4 credits	Met with A.A. or A.S. degree
Science	SCI	4 credits	Met with A.A. or A.S. degree
Quantitative Analysis	QUA	4 credits	Met with A.A. or A.S. degree
Power Structures or Global Understanding	POW or GLO	4 credits	Met with A.A. or A.S. degree GLO may be met with Study Abroad at NCC
Ethical Dimensions	ETH	4 credits	Met with A.A. or A.S. degree
Well Being	WEL	2 credits	Met with A.A. or A.S. degree
Experiential (One of the following):	-Community Engaged Learning -Study Away/Study Abroad -Student Research -CARD 400 – Senior Seminar: Liberal Arts and Problems of Today	2 credits	Met with A.A. or A.S. degree
Career Readiness: Preparation and Experiential*	CARD 250 – Career Preparation CARD 300 – Career Experiential	4 credits total	*Must be taken at NC

- An equivalent 3-credit transfer course may be used to fulfill a General Education requirement.
- One course may fulfill multiple requirements.
- College Transfer Credits are courses taken at a college or university after graduating high school and not earned through AP, IB, or CLEP.
- Only 64 semester hours (96 quarter hours) may transfer from a 2-yr college. Developmental courses (under 100-level) do not transfer.
- Requirements met through an eligible A.A. or A.S. degree may also be met with an eligible A.A.S. degree only if applied to the B.A.S. degree.
- Students with less than 28 transferable hours will need to complete CARD 110, a 1-credit transition course.

COURSE SUBSTITUTIONS FOR STUDENTS TRANSFERRING FROM KISHWAUKEE COLLEGE TO NORTH CENTRAL COLLEGE

Based on the 2024-2025 Kishwaukee College Catalog and the 2024-2025 North Central College Catalog

<i>Kishwaukee College Courses</i>					<i>NCC Courses</i>			<i>NCC General Education and Comments</i>			
DEPT	NUM	COURSE TITLE	SEM CRED	IAI EQUIV	Dept	Number	Credit	GENERAL EDUCATION			COMMENT
ACC	101	Software for Accounting	1.5		No	Credit	0				
ACC	106	Accounting Seminar	0.5-3		No	Credit	0				
ACC	108	Business Accounting	3		No	Credit	0				
ACC	121	Financial Accounting	4		ACCT	201	4				
ACC	122	Managerial Accounting	4		ACCT	202	4				
ACC	200	VITA Tax Procedure & Practice	3		No	Credit	0				
AGR		Agriculture			No	Credit	0				No credit transfers from this department
AGT	160	Intro to Agricultural Economics	4		ECON	Elective	4	SOC			
AGT		All other Agriculture Transfer courses			No	Credit	0				
AMT		Automotive Technology			No	Credit	0				No credit transfers from this department
ANT	120	Introduction to Anthropology	3	S1 900N	ANTH	Elective	3	SOC			ANT 120 + ANT 240 = ANTH 165
ANT	203	Introduction to Archaeology	3	S1 903	ANTH	165	3	SOC			
ANT	220	Introduction to Cultural Anthropology	3	S1 901N	ANTH	145	3	SOC	GLO		
ANT	240	Physical Anthropology	3	S1 902	ANTH	Elective	3	SOC	SCI		ANT 120 + ANT 240 = ANTH 165
ART	100	Drawing I Foundations	3		ARTD	120	3	ART			
ART	101	Drawing II Foundations	3		ARTD	220	3				
ART	103	Digital Art	3		ARTD	140	3				Only one of ART 103 or ART 203 transfer
ART	167	Graphic Design I	3		ARTD	242	3				
ART	200	Figure Drawing I	3		ARTD	225	3				
ART	201	Figure Drawing II	3		ARTD	Elective	3				
ART	203	Digital Imaging	3		INFS	Elective	3				Only one of ART 103 or ART 203 transfer
ART	204	Digital Illustration	3		ARTD	Elective	3				
ART	207	Video Art	3		MEDI	Elective	3				
ART	211	2-D Design Foundations	3		ARTD	107	3				
ART	212	3-D Design Foundations	3		ARTD	160	3	ART			
ART	214	Intaglio Printmaking	3		ARTD	Elective	3				
ART	223	Photography I	3		ARTD	175	3				
ART	224	Photography II	3		ARTD	Elective	3				
ART	231	Sculpture I	3		ARTD	260	3				
ART	232	Sculpture II	3		ARTD	360	3				May not use to fulfill 300-level req in major/minor
ART	235	Metals and Jewelry I	3		ARTD	Elective	3				
ART	236	Metals and Jewelry II	3		ARTD	Elective	3				
ART	241	Ceramics I	3		ARTD	150	3	ART			
ART	242	Ceramics II	3		ARTD	350	3				May not use to fulfill 300-level req in major/minor
ART	250	Relief Printmaking	3		ARTD	280	3				
ART	260	Painting I	3		ARTD	130	3	ART			
ART	261	Painting II	3		ARTD	230	3				
ART	267	Graphic Design II	3		ARTD	Elective	3				
ART	282	Introduction to the Visual Arts	3	F2 900	ARTD	100	3	ART			
ART	283	Art in the Elementary School	3		EDUC	Elective	3				
ART	289	History of Non-Western Art	3		ARTH	Elective	3				
ART	291	History of Art I Foundations	3	F2 901	ARTH	100	3	ART			
ART	292	History of Art II Foundations	3	F2 902	ARTH	102	3	ART			
ART	294	History of Photography	3	F2 904	ARTH	Elective	3	ART			
ART	298	Topics in Art History	1-3			Elective					Evaluated individually
ART	299	Topics in Studio Art	1-3			Elective					Evaluated individually
ASE		Adult Secondary Education			No	Credit	0				No credit transfers from this department
AVF		Aviation Flight			No	Credit	0				No credit transfers from this department

COURSE SUBSTITUTIONS FOR STUDENTS TRANSFERRING FROM KISHWAUKEE COLLEGE TO NORTH CENTRAL COLLEGE

Based on the 2024-2025 Kishwaukee College Catalog and the 2024-2025 North Central College Catalog

<i>Kishwaukee College Courses</i>					<i>NCC Courses</i>			<i>NCC General Education and Comments</i>				
DEPT	NUM	COURSE TITLE	SEM CRED	IAI EQUIV	Dept	Number	Credit	GENERAL EDUCATION			COMMENT	
BIO	101	Environmental Biology	3	L1 905	BIOL	106	3	SCI				
BIO	102	Environmental Biology Laboratory	1	L1 905L	BIOL	Elective	1	SCI			Credit only if BIO 101 is complete	
BIO	103	General Biology	3	L1 900	BIOL	100	3	SCI				
BIO	105	General Biology Laboratory	1	L1 900L	BIOL	Elective	1	SCI			Credit only if BIO 103 is complete	
BIO	109	Human Biology	3	L1 904	BIOL	104	3	SCI				
BIO	110	Human Biology Laboratory	1	L1 904L	BIOL	Elective	1	SCI			Credit only if BIO 109 is complete	
BIO	112	The Human Body	5		BIOL	Elective	5	SCI			No credit if taken after BIO 258 + BIO 259	
BIO	201	Biology Principles I	4	L1 910L	BIOL	Elective	4	SCI				
BIO	202	Biology Principles II	4	L1 910L	BIOL	Elective	4	SCI				
BIO	213	Introductory Microbiology	3		BIOL	145	3					
BIO	258	Anatomy and Physiology I	4		BIOL	201	4					
BIO	259	Anatomy and Physiology II	4		BIOL	202	4					
BUS	101	Introduction to Business	3		SBEN	100	3	SOC	ETH	GLO		
BUS	106	Business Seminar	0.5-3		No	Credit	0					
BUS	107	Practical Business Principles	3		No	Credit	0					
BUS	120	Business Mathematics	3		No	Credit	0					
BUS	130	Human Relations	3		No	Credit	0					
BUS	150	Legal/Social Environment of Business	3		BUSN	205	3	ETH			Only one of BUS 150 or BUS 256 transfer	
BUS	256	Business Law	3		BUSN	205	3	ETH			Only one of BUS 150 or BUS 256 transfer	
CAD		Computer-Aided Design Technology			No	Credit	0				No credit transfers from this department	
CHE	110	Basic Chemistry	3	P1 902	CHEM	100	3	SCI				
CHE	111	Basic Chemistry Laboratory	1	P1 902L	CHEM	100L	1	SCI			Credit only if CHE 110 is completed	
CHE	210	General Chemistry I	5	P1 902L	CHEM	121	5	SCI				
CHE	211	General Chemistry II	5		CHEM	122	5					
CHE	270	Organic Chemistry I	3		CHEM	251	3					
CHE	271	Organic Chemistry II	3		CHEM	252	3					
CHE	272	Organic Chemistry Laboratory I	2		CHEM	251L	2				Credit only if CHE 270 is completed	
CHE	273	Organic Chemistry Laboratory II	2		CHEM	252L	2				Credit only if CHE 271 is completed	
CIS	101	Introduction to Computers	3		No	Credit	0					
CIS	106	Computer Information System Seminar	.5-3		No	Credit	0					
CIS	111	Intro to Programming: Python	3		INFS	Elective	3					
CIS	118	Web Site Development	3		ARTD	245	3					
CIS	119	JavaScript	3		INFS	Elective	3					
CIS	123	Management Information Systems	3		INFS	Elective	3					
CIS	140	Networking Fundamentals	4		No	Credit	0					
CIS	150	C++ Programming I	3		CSCE	160	3				Only one of CIS 150 or CIS 160 transfer	
CIS	160	Java Programming I	3		CSCE	160	3				Only one of CIS 150 or CIS 160 transfer	
CIS	170	Introduction to UNIX	3		No	Credit	0					
CIS	182	Windows Server Fundamentals	3		No	Credit	0					
CIS	190	Google IT Support	6		No	Credit	0					
CIS	206	CIS Advanced Topics Seminar	1-4			Elective					Evaluated individually	
CIS	236	CIS Project	3			Elective					Evaluated individually	
CIS	250	C++ Programming II	3		CSCE	210	3				Only one of CIS 250 or CIS 260 transfer	
CIS	260	Java Programming II	3		CSCE	210	3				Only one of CIS 250 or CIS 260 transfer	
CIS	265	Server-Side Programming	3		CSCE	Elective	3				May not repeat	
CIS	282	Windows Server II Networking	3		No	Credit	0					
CIS	283	Network Security+	3		No	Credit	0					
CIS	285	Cybersecurity	3		No	Credit	0					

COURSE SUBSTITUTIONS FOR STUDENTS TRANSFERRING FROM KISHWAUKEE COLLEGE TO NORTH CENTRAL COLLEGE

Based on the 2024-2025 Kishwaukee College Catalog and the 2024-2025 North Central College Catalog

<i>Kishwaukee College Courses</i>					<i>NCC Courses</i>			<i>NCC General Education and Comments</i>				
DEPT	NUM	COURSE TITLE	SEM CRED	IAI EQUIV	Dept	Number	Credit	GENERAL EDUCATION			COMMENT	
CIS	296	CIS Internship	3			Elective					Evaluated individually	
COM	100	Oral Communications	3	C2 900	COMM	110	3					
COM	108	Communication in the Workplace	3		COMM	280	3					
COM	111	Speech Team Practicum I	1		COMM	119	1				A maximum 6 hours of COMM 119 transfer	
COM	112	Speech Team Practicum II	1		COMM	119	1				A maximum 6 hours of COMM 119 transfer	
COM	113	Speech Team Practicum III	1		COMM	119	1				A maximum 6 hours of COMM 119 transfer	
COM	150	Introduction to Mass Communications	3		COMM	185	3	SOC	GLO	POW		
COM	151	Publications Productions I	1		MEDI	152	1				A maximum 6 hours of MEDI 152 transfer	
COM	152	Publications Productions II	1		MEDI	152	1				A maximum 6 hours of MEDI 152 transfer	
COM	153	Publications Productions III	1		MEDI	152	1				A maximum 6 hours of MEDI 152 transfer	
COM	200	Advanced Public Speaking	3		COMM	287	3					
COM	201	Small Group Communications	3		COMM	214	3	SOC				
COM	203	Interpersonal Communication	3		COMM	200	3	SOC				
COM	204	Argumentation and Debate	3		COMM	285	3					
COM	220	Newswriting	3		MEDI	225	3					
COM	298	Topics in Communication	1-3			Elective					Evaluated individually	
CRJ	101	Introduction to Criminal Justice	3		SOCI	340	3	GLO			May not use to fulfill 300-level req in major/minor	
CRJ	106	Criminal Justice Seminar	0.5-3		No	Credit	0					
CRJ	107	Criminal Law I	3		SOCI	Elective	3					
CRJ	109	Traffic Law Enforcement	3		No	Credit	0					
CRJ	110	Traffic Accident Investigation	3		No	Credit	0					
CRJ	119	Criminal Justice Administration	3		No	Credit	0					
CRJ	151	Narcotics and Drug Enforcement	3		No	Credit	0					
CRJ	152	Community Oriented Policing	3		No	Credit	0					
CRJ	160	Field Report Writing	3		No	Credit	0					
CRJ	170	Crisis/Conflict Mediation	3		No	Credit	0					
CRJ	201	Criminal Investigation	3		No	Credit	0					
CRJ	207	Criminal Law II	3		SOCI	Elective	3					
CRJ	209	Juvenile Delinquency/Juvenile Justice	3		SOCI	221	3	POW				
CRJ	211	Introduction to Corrections	3		No	Credit	0					
CRJ	215	Gangs and Security Threat Groups	3		No	Credit	0					
CRJ	221	Constitutional Law for Police	3		SOCI	Elective	3					
CRJ	230	Ethics for Criminal Justice	3		SOCI	Elective	3					
CRJ	250	Criminalistics I	3		No	Credit	0					
CRJ	251	Criminalistics II	3		No	Credit	0					
CRJ	288	CRJ Internship Orientation	1		No	Credit	0					
CRJ	290	CRJ Internship I	3		No	Credit	0					
CRJ	291	CRJ Internship II	3		No	Credit	0					
CRT		Collision Repair Technology			No	Credit	0				No credit transfers from this department	
CSD		Counseling & Student Development			No	Credit	0				No credit transfers from this department	
DPT		Diesel Power Technology			No	Credit	0				No credit transfers from this department	
ECE	106	Early Childhood Education Seminar	0.5-3		No	Credit	0					
ECE	110	Foundations of Early Childhood Education	3		EDUC	Elective	3					
ECE	111	The Developing Child	3		PSYC	Elective	3					
ECE	112	Guiding Young Children	3		No	Credit	0					
ECE	210	The School-Age Child	3		No	Credit	0					
ECE	211	Facility Organization and Supervision	3		No	Credit	0					
ECE	212	Administrations of Day Care Homes	3		No	Credit	0					

COURSE SUBSTITUTIONS FOR STUDENTS TRANSFERRING FROM KISHWAUKEE COLLEGE TO NORTH CENTRAL COLLEGE

Based on the 2024-2025 Kishwaukee College Catalog and the 2024-2025 North Central College Catalog

<i>Kishwaukee College Courses</i>				<i>NCC Courses</i>			<i>NCC General Education and Comments</i>			
DEPT	NUM	COURSE TITLE	SEM CRED	IAI EQUIV	Dept	Number	Credit	GENERAL EDUCATION		COMMENT
ECE	220	Fostering Creative Expression Young Child	3		NCCC	Elective	3			
ECE	221	Language of the Young Child	3		NCCC	Elective	3			
ECE	222	Child Nutrition and Health	3		KINE	Elective	3			
ECE	223	Science/Math in Early Childhood Education	3		NCCC	Elective	3			
ECE	225	Techniques and Curriculum Planning	4		EDUC	Elective	4			
ECE	231	Infant/Toddler Developmnet	3		No	Credit	0			
ECE	272	Play & Motor Development	3		No	Credit	0			
ECE	280	ECE Practicum I	4		No	Credit	0			
ECE	281	ECE Practicum II	4		No	Credit	0			
ECO	100	Consumer Economics	3		SBEN	Elective	3			
ECO	160	Introduction to Economics	3	S3 900	ECON	100	3	SOC		
ECO	260	Principles of Macroeconomics	3	S3 901	ECON	205	3	SOC		
ECO	261	Principles of Microeconomics	3	S3 902	ECON	200	3	SOC		
EDU	107	Introduction to Special Education	3		EDUC	330	3			May not use to fulfill 300-level req in major/minor
EDU	201	Introduction to Education	3		EDUC	101	3			
EDU	282	Clinical Experiences in Education	1		EDUC	Elective	1			Maximim of 30 clinical hours transfer
EDU	285	Introduction to Technology in Education	3		EDUC	235	3			
EGR	101	Introduction to Engineering	1		No	Credit	0			
EGR	177	Engineering Design Graphics	3		ENGR	Elective	3			
EGR	250	Thermodynamics	3		PHYS	340				May not use to fulfill 300-level req in major/minor
EGR	270	Statics	3		PHYS	211	3			
EGR	272	Dynamics	3		PHYS	Elective	3			
EGR	280	Mechanics of Materials	3		PHYS	251	3			
EGR	290	Circuit Analysis	3		ELEC	250	3			
EGR	291	Circuit Analysis Lab	1		ELEC	Lab	1			Credit only if EGR 290 is completed
ELE		Electronics Technology			No	Credit	0			No credit transfers from this department
EMS		Emergency Medical Services	7		No	Credit	0			No credit transfers from this department
ENG	103	Composition I	3	C1 900	ENGL	110	3	COMP		
ENG	104	Composition II	3	C1 901R	ENGL	110	3	COMP		or WRI if ENG 101 is completed
ENG	109	Introduction to Technical Report Writing	3		ENGL	382	3			May not use to fulfill 300-level req in major/minor
ENG	111	College Study Skills	2		No	Credit	0			
ENG	130	Introduction to Literature	3	H3 900	ENGL	Elective	3	HUM		
ENG	199	Creative Writing: Literary Non-Fiction	3		ENGL	210	3	ART		
ENG	205	Introduction to Shakespeare	3	H3 905	ENGL	302	3	HUM		May not use to fulfill 300-level req in major/minor
ENG	206	Introduction to Fiction	3	H3 901	ENGL	104	3	HUM		
ENG	207	Fundamentals of English Grammar	3		ENGL	272	3			
ENG	212	American Literature: 1865 to Present	3	H3 915	ENGL	208	3	HUM		
ENG	215	Children's Literature	3	H3 918	ENGL	Elective	3	HUM		
ENG	216	Introduction to Poetry	3	H3 903	ENGL	Elective	3	HUM		
ENG	217	Introduction to Drama	3	H3 902	ENGL	Elective	3	HUM		
ENG	281	Crime and Punishment	3		ENGL	Elective	3			
ENG	282	Science Fiction and Fantasy	3		ENGL	Elective	3			
ENG	283	Images of Women	3	H3 911D	ENGL	234	3	HUM	POW	
ENG	286	Literature and Film	3	HF 908	FILM	Elective	3	HUM		
ENG	291	Creative Writing: Poetry	3		ENGL	Elective	3	ART		
ENG	294	Irish Literature	3		ENGL	Elective	3	HUM		
ENG	298	Topics in Literature	3			Elective				Evaluated individually
ENG	299	Creative Writing: Fiction	3		ENGL	Elective	3	ART		

COURSE SUBSTITUTIONS FOR STUDENTS TRANSFERRING FROM KISHWAUKEE COLLEGE TO NORTH CENTRAL COLLEGE

Based on the 2024-2025 Kishwaukee College Catalog and the 2024-2025 North Central College Catalog

<i>Kishwaukee College Courses</i>				<i>NCC Courses</i>			<i>NCC General Education and Comments</i>			
DEPT	NUM	COURSE TITLE	SEM CRED	IAI EQUIV	Dept	Number	Credit	GENERAL EDUCATION		COMMENT
ESL		English As A Second Language			No	Credit	0			No credit transfers from this department
EST		Esthetics			No	Credit	0			No credit transfers from this department
FRN	101	Elementary French I	3		FREN	101	3			
FRN	102	Elementary French II	3		FREN	102	3			
FRN	201	Intermediate French I	3		FREN	201	3			
FRN	202	Intermediate French II	3	H1 900	FREN	202	3	HUM		
GEO	202	World Regional Geography	3	S4 900N	SOCI	Elective	3	SOC		
GER	101	Elementary German I	3		GRMN	101	3			
GER	102	Elementary German II	3		GRMN	102	3			
GER	201	Intermediate German I	3		GRMN	201	3			
GER	202	Intermediate German II	3	H1 900	GRMN	202	3	HUM		
HIS	144	Western Civilization to 1715	3	H2 901	HIST	101	3	HUM		
HIS	145	Western Civilization since 1715	3	H2 902	HIST	102	3	HUM	GLO	
HIS	172	World History to 1500	3	H2 906	HIST	Elective	3	HUM		
HIS	173	World History since 1500	3		HIST	Elective	3			
HIS	200	African American History	3	S2 923D	HIST	112	3	HUM		
HIS	220	United States History to 1877	3	H2 904	HIST	Elective	3	HUM	GLO	POW
HIS	222	United States History Since 1877	3	H2 905	HIST	Elective	3	HUM	GLO	POW
HST	249	History of Africa	3	H2 903N	HIST	185	3	HUM	ETH	POW
HIS	295	British History to 1650	3		HIST	Elective	3			
HIS	296	British History 1650 to Present	3		HIST	Elective	3			
HIS	297	British Culture and Society	3		HIST	Elective	3	HUM		
HIS	299	Topics in History	3			Elective				Evaluated individually
HIT	216	Medical Terminology I	3		HTSC	156	3			
HIT	219	Medical Terminology II	4		HTSC	Elective	4			
HIT		All other Health Information Tech courses			No	Credit	0			
HLT	100	Exploring Health Careers	3		HTSC	155	3			
HLT	122	Introduction to Nutrition	1		HTSC	Elective	1			
HLT	201	Human Nutrition	3		BCHM	140	3	SCI		
HLT	202	Women's Health Issues	3		HTSC	Elective	3			
HLT	206	Contemporary Health Concepts	3		HTSC	Elective	3			
HLT	210	Drug Use & Abuse	3		HTSC	Elective	3			
HOR		Horticulture			No	Credit	0			No credit transfers from this department
HOS		Hospitality & Culinary			No	Credit	0			No credit transfers from this department
HUM	119	Humanities: Historical Survey	3	HF 900	NCCC	Elective	3	HUM		
HUM	129	Humanities: Topical Survey	3	HF 901	NCCC	Elective	3	HUM		
HUM	150	Introduction to Film Appreciation	3	F2 908	FILM	100	3	ART		
HUM	213	Leadership Through the Humanities	3		LEAD	Elective	3	HUM		
HUM	215	Black Cinema	3		FILM	Elective	3	HUM		
HUM	217	World Mythology	3	H9 901	CLSS	Elective	3	HUM		
HUM	219	Introduction to Culture	3		NCCC	Elective	3	HUM		
HUM	297	Topics in Humanities	1-4			Elective				Evaluated individually
HUM	298	Topics in Culture	1-4			Elective				Evaluated individually
IS	200	Independent Study	1-4			Elective				Evaluated individually
LIB		Library			No	Credit	0			No credit transfers from this department
LNG	110	Introduction to Language	3		ENGL	270	3	GLO		
MA		Medical Assistant			No	Credit	0			No credit transfers from this department
MAT		All Courses Numbered Below 100			No	Credit	0			

COURSE SUBSTITUTIONS FOR STUDENTS TRANSFERRING FROM KISHWAUKEE COLLEGE TO NORTH CENTRAL COLLEGE

Based on the 2024-2025 Kishwaukee College Catalog and the 2024-2025 North Central College Catalog

<i>Kishwaukee College Courses</i>				<i>NCC Courses</i>			<i>NCC General Education and Comments</i>			
DEPT	NUM	COURSE TITLE	SEM CRED	IAI EQUIV	Dept	Number	Credit	GENERAL EDUCATION		COMMENT
MAT	101	Topics in Mathematics	3	M1 901	MATH	120	3	QUA		
MAT	150	College Algebra	4		MATH	Elective	4			MAT 150 + MAT 155 = MATH 140
MAT	155	Trigonometry	3		MATH	Elective	3			MAT 150 + MAT 155 = MATH 140
MAT	201	Math For Elementary Teachers I	3		MATH	107	3			
MAT	202	Math For Elementary Teachers II	3	M1 903	MATH	108	3	QUA		
MAT	208	Introductory Statistics	3	M1 902	PSYC	250	3	QUA		Only one of MAT 208 or MAT 220 transfer
MAT	210	Finite Mathematics	3	M1 906	MATH	130	3	QUA		
MAT	211	Calculus For Business & Social Science	3	M1 900	MATH	Elective	3	QUA		
MAT	220	Business Statistics	3	M1 902	BUSN	265	3	QUA		Only one of MAT 208 or MAT 220 transfer
MAT	229	Calculus & Analytic Geometry I	5	M1 900	MATH	151	5	QUA		
MAT	230	Calculus & Analytic Geometry II	5	M1 900	MATH	152	5	QUA		
MAT	231	Calculus & Analytic Geometry III	5	M1 900	MATH	253	5	QUA		
MAT	240	Linear Algebra	4		MATH	300	4			May not use to fulfill 300-level req in major/minor
MAT	260	Differential Equations	3		MATH	315	3			May not use to fulfill 300-level req in major/minor
MM	149	Introduction to Marketing	3		MKTG	300	3			May not use to fulfill 300-level req in major/minor
MM	162	Introduction to Management	3		MGMT	305	3			May not use to fulfill 300-level req in major/minor
MM	233	Retail Management	3		MGMT	Elective	3			
MM	234	Advertising and Promotion	3		MKTG	Elective	3			
MM	237	Supervision	3		MGMT	Elective	3			
MM	259	Introduction to Finance	3		FINA	350	3			May not use to fulfill 300-level req in major/minor
MM	264	Human Resources Management	3		MGMT	345	3			May not use to fulfill 300-level req in major/minor
MM	266	Principles of Sales	3		MKTG	Elective	3			
MM	269	Entrepreneurship	3		BUSN	170	3			
MM	280	Materials Management Processes	3		MGMT	Elective	3			
MM	299	Internship Marketing or Management	4			Elective				Evaluated individually
MS		Military Science			No	Credit	0			No credit transfers from this department
MT		Automated Engineering/Manufacturing Tech			No	Credit	0			No credit transfers from this department
MUS	100	Fundamentals of Music	3		MUSI	Elective	3			
MUS	101	Music Theory I	3		MUSI	101	3			
MUS	102	Music Theory II	3		MUSI	102	3			
MUS	130	Survey of American Music	3	F1 904	MUSI	Elective	3	ART		
MUS	139	Private Applied Music I	1		MUAL	Elective	1			MUAL + crs number depends on instrument/voice
MUS	140	Class Instruction - Guitar I	1		MUAL	185	1			
MUS	142	Class Instruction - Guitar II	1		MUAL	185	1			
MUS	180	Private Piano I	1		MUAL	110	1			
MUS	181	Private Guitar I	1		MUAL	185	1			
MUS	183	Private Voice I	1		MUAL	100	1			
MUS	209	Music For the Elementary School	3		MUED	Elective	4			
MUS	220	Music Appreciation	3	F1 900	MUSI	150	3	ART		
MUS	222	Exploring Non-West World Culture Thru Music	3	F1 903N	MUSI	156	3	ART	GLO	
MUS	239	Private Applied Music II	2		MUAL	Elective	2			MUAL + crs number depends on instrument/voice
MUS	250	Class Instruction: Voice I	1		MUAL	100	1			
MUS	260	Class Instruction: Voice II	1		MUAL	100	1			
MUS	270	Class Instruction: Piano I	1		MUAL	110	1			
MUS	280	Class Instruction: Piano II	1		MUAL	110	1			
MUS	281	Private Guitar II	2		MUAL	185	2			
MUS	287	Private Piano II	2		MUAL	110	2			
MUS	288	Private Voice II	2		MUAL	100	2			

COURSE SUBSTITUTIONS FOR STUDENTS TRANSFERRING FROM KISHWAUKEE COLLEGE TO NORTH CENTRAL COLLEGE

Based on the 2024-2025 Kishwaukee College Catalog and the 2024-2025 North Central College Catalog

<i>Kishwaukee College Courses</i>				<i>NCC Courses</i>			<i>NCC General Education and Comments</i>			
DEPT	NUM	COURSE TITLE	SEM CRED	IAI EQUIV	Dept	Number	Credit	GENERAL EDUCATION		COMMENT
NUR		Nursing			No	Credit	0			No credit transfers from this department
OS		Office Systems			No	Credit	0			No credit transfers from this department
PE	101	Golf	1		KINE	111	1			A maximum 8 hours of KINE activity transfer
PE	109	Volleyball	1		KINE	105	1			A maximum 8 hours of KINE activity transfer
PE	122	Badminton	1		KINE	Activity	1			A maximum 8 hours of KINE activity transfer
PE	137	Physical Fitness Challenge I	0.5-1		KINE	Activity	0.5-1			A maximum 8 hours of KINE activity transfer
PE	138	Physical Fitness Challenge II	0.5-1		KINE	Activity	0.5-1			A maximum 8 hours of KINE activity transfer
PE	140	Fitness Training I	1		KINE	Activity	1			A maximum 8 hours of KINE activity transfer
PE	141	Fitness Training II	1		KINE	Activity	1			A maximum 8 hours of KINE activity transfer
PE	162	First Aid and Emergency Response	3		HTSC	100	3	WEL		
PE	190	Topics in Physical Education	0.5-3			Elective				Evaluated individually
PE	200	Introduction to Physical Education	2		KINE	Elective	2			
PE	214	Basketball Officiating	1		KINE	Elective	1			
PE	220	Theory and Practice of Basketball	2		KINE	Elective	2			
PE	250	Physical Education For Children	3		KINE	Elective	3			
PHL	101	Introduction to Philosophy	3	H4 900	PHIL	100	3	HUM	ETH	
PHL	103	Introduction to Logic	3	H4 906	PHIL	230	3	HUM	QUA	
PHL	198	World Religions	3	H5 904N	RELG	100	3	HUM	GLO	
PHL	200	Ethics	3	H4 904	PHIL	110	3	HUM	ETH	
PHL	298	Topics in Philosophy	3			Elective	3	HUM		Evaluated individually
PHS	118	Physical Science Lab	1	P9 900L	SCIE	Lab	1	SCI		Credit only if PHS 119 is complete
PHS	119	Introduction to Physical Science	3	P9 900	SCIE	Elective	3	SCI		
PHS	120	Introduction to Physical Geology	3	P1 907	SCIE	Elective	3	SCI		
PHS	130	Introduction to Astronomy	3		PHYS	110	3	SCI		
PHS	298	Topics in Science	1-4			Elective				Evaluated individually
PHY	150	Introductory Physics	3	P1 900	PHYS	Elective	3	SCI		
PHY	151	Introductory Physics Laboratory	1	P1900L	PHYS	Lab	1	SCI		Credit only if PHY 150 is completed
PHY	250	General Physics I	4	P1 900L	PHYS	131	4	SCI		
PHY	251	General Physics II	4		PHYS	132	4			
PHY	263	Fundamentals of Physics I	4	P2 900L	PHYS	161				Only one of PHY 260 or 263 transfers
PHY	273	Fundamentals of Physics II	4		PHYS	162				Only one of PHY 261 or 273 transfers
PLS	140	Intro to American Government & Politics	3	S5 900	POLS	101	3	SOC	POW	
PLS	210	International Relations	3	S5 904N	POLS	102	3	SOC	GLO	
PLS	240	State and Local Government	3	S5 902	POLS	Elective	3	SOC	POW	
PSY	102	Introduction to Psychology	3	S6 900	PSYC	100	3	SOC		
PSY	210	Educational Psychology	3		PSYC	205	3			
PSY	216	Abnormal Psychology	3		PSYC	324	3			May not use to fulfill 300-level req in major/minor
PSY	225	Psychology of Childhood & Adolescence	3	S6 903	PSYC	210	3	SOC		
PSY	256	Theories of Personality	3		PSYC	320	3			May not use to fulfill 300-level req in major/minor
PSY	280	Life-Span Human Development	3	S6 902	PSYC	235	3	SOC		
PSY	286	Social Psychology	3	S8 900	PSYC	240	3	SOC		
RA		Radiologic Technology			No	Credit	0			No credit transfers from this department
SOC	170	Introduction to Sociology	3	S7 900	SOCI	100	3	SOC	POW	
SOC	200	Race and Ethnic Relations	3	S7 903D	SOCI	211	3	SOC	POW	
SOC	219	Marriage and Family	3	S7 902	SOCI	342	3	SOC	GLO	May not use to fulfill 300-level req in major/minor
SOC	283	Social Problems	3	S7 901	SOCI	Elective	3	SOC	POW	
SOC	288	Criminology	3		SOCI	220	3	POW		
SOC	299	Topics in Sociology	3			Elective	3			Evaluated individually

COURSE SUBSTITUTIONS FOR STUDENTS TRANSFERRING FROM KISHWAUKEE COLLEGE TO NORTH CENTRAL COLLEGE

Based on the 2024-2025 Kishwaukee College Catalog and the 2024-2025 North Central College Catalog

<i>Kishwaukee College Courses</i>					<i>NCC Courses</i>			<i>NCC General Education and Comments</i>			
DEPT	NUM	COURSE TITLE	SEM CRED	IAI EQUIV	Dept	Number	Credit	GENERAL EDUCATION			COMMENT
SPA	101	Elementary Spanish I	3		SPAN	101	3				
SPA	102	Elementary Spanish II	3		SPAN	102	3				
SPA	130	Spanish For Medical Personnel	3		No	Credit	0				
SPA	201	Intermediate Spanish I	3		SPAN	201	3				
SPA	202	Intermediate Spanish II	3	H1 900	SPAN	202	3	HUM			
SPA	298	Latin American Culture	3		NCCC	Elective	3	HUM			
THE	111	Theater Practicum I	1		THEA	115	1				A maximum 6 hours of THEA 115 transfer
THE	130	Introduction to Acting	3		THEA	150	3				
THE	131	Intermediate Acting	3		THEA	250	3				
THE	203	Introduction to the Theatre	3	F1 907	THEA	102	3	ART			
THE	215	Diversity in American Drama	3		THEA	Elective	3				
TMAT	100	Technical Mathematics	3		No	Credit	0				
TPM		Therapeutic Massage			No	Credit	0				No credit transfers from this department
WT		Welding Technology			No	Credit	0				No credit transfers from this department