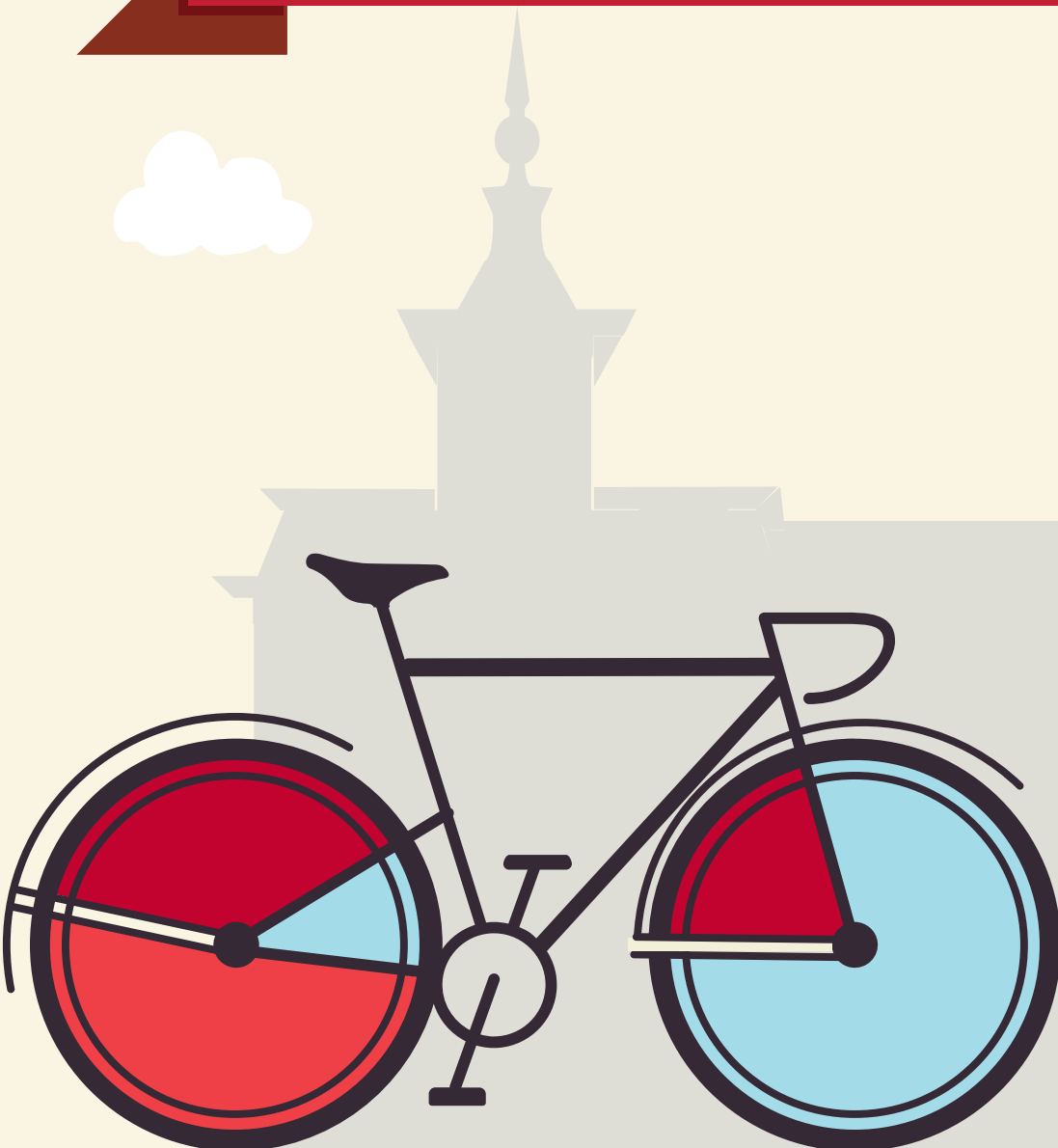


# YOUR GUIDE TO TRANSFERRING TO NORTH CENTRAL COLLEGE

**MCHENRY COUNTY COLLEGE**





This guide is based on the 2024-2025 McHenry County College catalog, and the 2024-2025 North Central College catalog. North Central College reserves the right to alter any information listed in this guide, including the transferability of courses, without notice or obligation. For assistance with this guide, please call the Office of Admission at (630) 637-5800 or email at [admissions@noctrl.edu](mailto:admissions@noctrl.edu).

How to use this guide: This course substitution guide is designed to help you select courses at McHenry County College if you plan to transfer to North Central College. Working with your MCC advisor and NCC transfer admission counselor, refer to this guide to determine courses that meet North Central College requirements in our general education curriculum, academic major and minor requirements, and electives. Your NCC counselor can also provide a major planning worksheet. Listed below is a sample from this guide:

MCC Course Numbers, Titles, Credit					NCC Equivalent Course Numbers & Credit			NCC General Education Codes			Important Information about courses
DEPT	NUM	COURSE TITLE	CREDIT	IAI EQUIV	DEPT	NUM	CREDIT	GENERAL EDUCATION			COMMENTS
ANT	151	Introduction to Anthropology	3	S1 900N	ANTH	Elective	3	SOC			
ANT	155	Introduction to Archaeology	3	S1 903	ANTH	Elective	3	SOC			ANT 155 + ANT 160 = ANTH 165

The Cardinal Directions general education curriculum at North Central College is as follows, along with the general education codes you will find in this guide. Please note the column to the far right which indicates which of these requirements may be waived (or required) based on the level of education you achieve prior to transferring. For additional details, please reference the NC catalog: <http://catalog.noctrl.edu/content.php?catoid=26&navoid=2582>.

## CARDINAL DIRECTIONS CURRICULUM MAP

Requirement	General Education Code	Credit	Comments
Composition	COMP	4 credits	Met with A.A. or A.S. degree
Writing Intensive	WRI	4 credits	Met with A.A. or A.S. degree
Public Speaking	COM	4 credits	Met with A.A. or A.S. degree
Arts	ART	4 credits	Met with A.A. or A.S. degree
Humanities	HUM	4 credits	Met with A.A. or A.S. degree
Social Science	SOC	4 credits	Met with A.A. or A.S. degree
Science	SCI	4 credits	Met with A.A. or A.S. degree
Quantitative Analysis	QUA	4 credits	Met with A.A. or A.S. degree
Power Structures or Global Understanding	POW or GLO	4 credits	Met with A.A. or A.S. degree GLO may be met with Study Abroad at NCC
Ethical Dimensions	ETH	4 credits	Met with A.A. or A.S. degree
Well Being	WEL	2 credits	Met with A.A. or A.S. degree
Experiential (One of the following):	-Community Engaged Learning -Study Away/Study Abroad -Student Research -CARD 400 – Senior Seminar: Liberal Arts and Problems of Today	2 credits	Met with A.A. or A.S. degree
Career Readiness: Preparation and Experiential*	CARD 250 – Career Preparation CARD 300 – Career Experiential	4 credits total	*Must be taken at NC

- \*An equivalent 3-credit transfer course may be used to fulfill a General Education requirement.
- One course may fulfill multiple requirements.
- College Transfer Credits are courses taken at a college or university after graduating high school and not earned through AP, IB, or CLEP.
- Only 64 semester hours (96 quarter hours) may transfer from a 2-yr college. Developmental courses (under 100-level) do not transfer.
- Requirements met through an eligible A.A. or A.S. degree may also be met with an eligible A.A.S. degree only if applied to the B.A.S. degree.
- Students with less than 28 transferable hours will need to complete CARD 110, a 1-credit transition course.

**COURSE SUBSTITUTIONS FOR STUDENTS TRANSFERRING FROM MCHENRY COUNTY COLLEGE TO NORTH CENTRAL COLLEGE**

*Based on the 2024-2025 McHenry County College Catalog and the 2024-2025 North Central College Catalog*

McHenry County College Courses				NCC Courses			NCC General Education and Comments			
DEPT	NUM	COURSE TITLE	SEM CRED	IAI EQUIV	Dept	Number	Credit	GENERAL EDUCATION		COMMENT
ACC	110	Basic Accounting Procedures	3		No	Credit	0			
ACC	151	Financial Accounting	3		ACCT	201	3			
ACC	152	Management Accounting	3		ACCT	202	3			
ACC	220	Computer Applications For Accounting	3		No	Credit	0			
ACC	236	Cost Accounting	3		ACCT	307	3			May not use to fulfill 300-level req in major/minor
ACC	237	Income Tax Accounting	3		ACCT	330	3			May not use to fulfill 300-level req in major/minor
ACC	238	Income Tax - Advanced	3		ACCT	431	3			May not use to fulfill 400-level req in major/minor
ACC	239	IRS Practice & Procedure	3		No	Credit	0			
ACC	240	Enrolled Agent Review (EA) Review	1		No	Credit	0			
ACC	241	Tax Internship	1			Elective				Evaluated individually
ACC	245	Principles of Finance	3		FINA	Elective	3			
ACC	250	Intermediate Accounting I	3		ACCT	317				May not use to fulfill 300-level req in major/minor
ACC	251	Intermediate Accounting II	3		ACCT	318				May not use to fulfill 300-level req in major/minor
ACC	255	Accounting Internship	3			Elective				Evaluated individually
ACC	260	Auditing and Assurance Services I	3		No	Credit	0			
ACC	265	Auditing and Assurance Services II	3		No	Credit	0			
ACC	290	Special Topics in Accounting	4			Elective	0			Evaluated individually
AET		Achitectural & Engineering Design Technology			No	Credit				No credit transfers from this department
AGR		Agriculture			No	Credit				No credit transfers from this department
AMT		Automotive			No	Credit				No credit transfers from this department
ANI	100	2D Animation	3		ARTD	280	3			
ANI	103	Animation Techniques 1	3		No	Credit	0			
ANI	105	3D Modeling and Animation 1	3		ARTD	Elective	3			
ANI	203	Animation Techniques 2	3		No	Credit	0			
ANI	205	3D Modeling and Animation 2	3		ARTD	Elective	3			
ANT	151	Introduction to Anthropology	3	S1 900N	ANTH	Elective	3	SOC		
ANT	155	Introduction to Archaeology	3	S1 903	ANTH	Elective	3	SOC		ANT 155 + ANT 160 = ANTH 165
ANT	160	Intro to Physical Anthropology	3	S1 902	ANTH	Elective	3	SOC		ANT 155 + ANT 160 = ANTH 165
ANT	170	Intro to Cultural Anthropology	3	S1 901N	ANTH	Elective	3	SOC	GLO	
ANT	255	Archaeological Field School	3		ANTH	235	3	SOC	ETH	
ANT	260	Archaeology of the Ancient Near East	3		ANTH	Elective	3	SOC		
ANT	290	Topics in Anthropology	3			Elective				Evaluated individually
AOM		Administrative Office Management			No	Credit	0			No credit transfers from this department
ART	150	Humanities through the Arts	3	HF 900	NCCC	Elective	3	HUM		
ART	151	Art Appreciation	3	F2 900	ARTD	100	3	ART		
ART	152	Intro to Studio Art (Introduction)	3		ARTD	Elective	3			
ART	153	2D Design	3		ARTD	107	3			
ART	155	Non-Western Art	3	F2 903N	ARTH	Elective	3	ART		
ART	156	Drawing I	3		ARTD	120	3	ART		
ART	157	Drawing II	3		ARTD	220	3			
ART	158	Life Drawing	3		ARTD	225	3			
ART	159	Introduction to Printmaking	3		ARTD	210	3			May not be repeated
ART	160	Painting I	3		ARTD	130	3	ART		
ART	165	Ethnic Folk Art	3	F2 906D	ARTH	Elective	3	ART		
ART	166	Introduction to Digital Tools	2		ARTD	Elective	2			
ART	170	Introduction to Art Education	3		ARTD	Elective	3			
ART	171	Art History I	3	F2 901	ARTH	100	3	ART	GLO	
ART	172	Art History II	3	F2 902	ARTH	102	3	ART	GLO	
ART	174	Studies in Contemporary Art	3	F2 902	ARTH	304	3	WRI		May not use to fulfill 300-level req in major/minor
ART	175	History of Photography	3	F2 904	ARTD	Elective	3	ART		
ART	176	Fashion and Art	3		ARTD	Elective	3	ART		
ART	180	Sculpture I	3		ARTD	260	3	ART		May not be repeated
ART	184	Jewelry/Metals I	3		ARTD	Elective	3			May not be repeated
ART	185	Fibers I	3		ARTD	Elective	3			
ART	186	Jewelry/Metals II	3		ARTD	Elective	3			May not be repeated

**COURSE SUBSTITUTIONS FOR STUDENTS TRANSFERRING FROM MCHENRY COUNTY COLLEGE TO NORTH CENTRAL COLLEGE**

*Based on the 2024-2025 McHenry County College Catalog and the 2024-2025 North Central College Catalog*

McHenry County College Courses											NCC Courses			NCC General Education and Comments			
DEPT	NUM	COURSE TITLE	SEM CRED	IAI EQUIV	Dept	Number	Credit	GENERAL EDUCATION			COMMENT						
ART	190	Professional Practices	3		No	Credit	0										
ART	241	Darkroom Photography I	3		ARTD	175	3	ART									
ART	242	Darkroom Photography II	3		ARTD	Elective	3										
ART	244	Color Photography	3		ARTD	Elective	3				May not be repeated						
ART	245	Primitive Photography	3		ARTD	Elective	3				May not be repeated						
ART	246	Alternative Photo Processing	3		ARTD	Elective	3				May not be repeated						
ART	247	Large Format Photography	3		No	Credit	0										
ART	248	Studio Lighting I	3		No	Credit	0										
ART	249	Studio Lighting II	3		No	Credit	0										
ART	250	Digital Photography I	3		ARTD	275	3				May not be repeated						
ART	252	Digital Photography II	3		ARTD	Elective	3				May not be repeated						
ART	253	3D Design	3		ARTD	160	3	ART									
ART	254	Digital Photography III	3		ARTD	Elective	3				May not be repeated						
ART	255	Digital & Film Photo Exploration	3		ARTD	Elective	3				May not be repeated						
ART	257	Drawing III	3		ARTD	Elective	3				May not be repeated						
ART	258	Life Drawing II	3		ARTD	Elective	3										
ART	261	Painting II	3		ARTD	230	3				May not be repeated						
ART	262	Painting III	3		ARTD	Elective	3				May not be repeated						
ART	263	Painting IV	3		ARTD	Elective	3				May not be repeated						
ART	264	Beginning Watercolor	3		ARTD	135	3										
ART	265	Advanced Watercolor	3		ARTD	Elective	3				May not be repeated						
ART	266	Advanced Painting	3		ARTD	330	3				May not be repeated or used to fulfill 300-level req						
ART	271	Ceramics I	3		ARTD	150	3	ART			May not be repeated						
ART	272	Ceramics II	3		ARTD	250	3				May not be repeated						
ART	273	Ceramics III	3		ARTD	350	3				May not be repeated or used to fulfill 300-level req						
ART	274	Ceramics IV	3		ARTD	Elective	3				May not be repeated						
ART	275	Ceramics Studio	3		ARTD	Elective	3				May not be repeated						
ART	280	Sculpture II	3		ARTD	Elective	3				May not be repeated						
ART	290	Topics In Art	3			Elective					Evaluated individually						
ART	299	Individual Art Projects	4			Elective					Evaluated individually; Credit varies						
BIO	110	Introduction to Human Biology	4	L1 904L	BIOL	104	4	SCI									
BIO	130	Environmental Field Biology	4	L1 905L	BIOL	250	4	SCI									
BIO	138	Heredity, Ethics and Society	4	L1 906L	BIOL	Elective	4	SCI	ETH								
BIO	157	Fundamentals of Biology	4	L1 900L	BIOL	Elective	4	SCI									
BIO	158	Evolution and Biodiversity	4	L1 907L	BIOL	220	4	SCI									
BIO	230	Human Structure and Function	4		BIOL	Elective	4										
BIO	255	Microbiology	4		BIOL	145	4										
BIO	263	Human Anat & Physiology I	4		BIOL	201	4										
BIO	264	Human Anat & Physiology II	4		BIOL	202	4										
BUS	110	Business Career Skills	3		No	Credit	0										
BUS	145	Business Applications of Mathematics	3		No	Credit	0										
BUS	150	Introduction to Business	3		SBEN	100	3	SOC	ETH	GLO							
BUS	155	Business Communication	3		No	Credit	0										
BUS	160	Introduction to Entrepreneurship	3		BUSN	170	3										
BUS	162	Entrepreneurship Business Planning	3		BUSN	Elective	3										
BUS	165	Electronic Commerce (E-Commerce)	3		No	Credit											
BUS	175	Introduction: International Business	3		BUSN	201	3										
BUS	220	Human Relations and Teambuilding	3		No	Credit	0										
BUS	235	Business Ethics	3		BUSN	Elective	3	ETH									
BUS	241	Business Law	3		BUSN	205	3	ETH									
BUS	255	Business Internship	3			Elective					Evaluated individually						
BUS	270	Principles of Exporting & Importing	3		No	Credit	0										
BUS	299	Topics/Issues in Business	4			Elective					Evaluated individually						
CHM	115	Chemistry and Society	4	P1 903L	CHEM	100	4	SCI									
CHM	164	Introductory Chemistry	4	P1 902L	CHEM	Elective	4	SCI									
CHM	165	General Chemistry I	5	P1 902L	CHEM	121	5	SCI									
CHM	166	General Chemistry II	5		CHEM	122	5										

**COURSE SUBSTITUTIONS FOR STUDENTS TRANSFERRING FROM MCHENRY COUNTY COLLEGE TO NORTH CENTRAL COLLEGE**

*Based on the 2024-2025 McHenry County College Catalog and the 2024-2025 North Central College Catalog*

<i>McHenry County College Courses</i>										<i>NCC Courses</i>			<i>NCC General Education and Comments</i>			
DEPT	NUM	COURSE TITLE	SEM CRED	IAI EQUIV	Dept	Number	Credit	GENERAL EDUCATION			COMMENT					
CHM	170	Survey of Organic and Biochemistry	5		CHEM	Elective	5									
CHM	265	Organic Chemistry I	5		CHEM	251	5									
CHM	266	Organic Chemistry II	5		CHEM	252	5									
CDM	250	Internship In CDM	2			Elective					Evaluated individually					
CDM	290	Topics in Computers & Digital Media	4			Elective					Evaluated individually					
CDM		All other Computer Info Systems/CDM courses	0		No	Credit					No credit transfers from this department					
CJS	101	Introduction to Criminal Justice	3		SOCI	340	3	GLO			May not use to fulfill 300-level req in major/minor					
CJS	106	Introduction to Corrections	3		No	Credit	0									
CJS	110	Policing	3		No	Credit	0									
CJS	115	Criminal Law	3		SOCI	Elective	3									
CJS	120	Juvenile Delinquency	3		SOCI	221	3	POW								
CJS	125	Principles of Criminal Investigation	3		No	Credit	0									
CJS	131	Emergency Dispatcher	3		No	Credit	0									
CJS	140	Criminology	3		CRIM	100	3									
CJS	201	Laws of Criminal Evidence	3		No	Credit	0									
CJS	206	Community Based Corrections	3		No	Credit	0									
CJS	211	Terrorism and Homeland Security	3		No	Credit										
CJS	215	Community Policing	3		No	Credit	0									
CJS	220	Ethics in Criminal Justice	3		No	Credit	3									
CJS	225	Criminal Justice Management	3		No	Credit	0									
CJS	230	Student Police Academy	3		No	Credit										
CJS	250	Criminal Justice Internship	3		No	Credit	0									
CJS	275	Criminal Procedure	3		No	Credit	0									
CJS	290	Topics in Criminal Justice	3			Elective					Evaluated individually					
CLM		Culinary Management			No	Credit	0				No credit transfers from this department					
CMT		Construction Management			No	Credit	0				No credit transfers from this department					
CSC	121	Computer Science I	4		CSCE	160	4									
CSC	122	Computer Science II	4		CSCE	Elective	4									
DBM	100	Intro to MySQL Database Management Systems	3		CSCE	Elective	3									
DBM	110	SQL/Database Concepts	3		CSCE	Elective	3									
DGM	107	Introduction to Digital Legalities	3		No	Credit	0									
DGM	110	Game Design 1	3		MEDI	Elective	3									
DGM	152	Interface Design	3		ARTD	Elective	3									
DGM	153	Designing the User Experience	3		ARTD	Elective	3									
DGM	160	3D Game Development 1	3		MEDI	Elective	3									
DGM	170	Digital Video Production	3		MEDI	222	3									
DGM	210	Game Design 2	3		MEDI	Elective	3									
DGM	250	Digital Media Internship	3			Elective					Evaluated individually					
DGM	256	Digital Freelancing	3		MEDI	Elective	3									
DGM	260	3D Game Development 2	3		MEDI	Elective	3									
DGM	265	Agile Project Management	3		No	Credit	0									
DGM	290	Topics in Digital Media	4			Elective					Evaluated individually					
EAS	101	Introduction to Earth Science	4	P1 905L	ENVI	141	4	SCI								
EAS	120	Introduction to Meteorology	4	P1 905L	SCIE	Elective	4	SCI								
EAS	180	Introduction to Astronomy	4	P1 905L	PHYS	110	4	SCI								
EAS	185	Natural Hazards and Disasters	3		SCIE	Elective	4									
ECE	115	Early Childhood Education	3		NCCC	Elective	3									
ECE	118	The Professional Childcare Provider	3		No	Credit	0									
ECE	120	Child Growth and Development	3		PSYC	210	3				Only one of ECE 120 or PSY 251 transfers					
ECE	121	Infant/Toddler Development and Care	3		No	Credit	0									
ECE	125	Nutrition, Health & Safety	3		KINE	Elective	3									
ECE	131	Early Child Guidance & Observation	3		NCCC	Elective	3									
ECE	150	Child Study and Observation	3		No	Credit	0									
ECE	155	Child, Family, Community Relations	3		No	Credit	0									
ECE	204	Early Childhood Language Arts	3		NCCC	Elective	3									
ECE	209	Early Childhood Music/Rhythmic Activity	3		NCCC	Elective	3									
ECE	214	Early Childhood Art Activities	3		NCCC	Elective	3									

**COURSE SUBSTITUTIONS FOR STUDENTS TRANSFERRING FROM MCHENRY COUNTY COLLEGE TO NORTH CENTRAL COLLEGE**

*Based on the 2024-2025 McHenry County College Catalog and the 2024-2025 North Central College Catalog*

McHenry County College Courses				NCC Courses			NCC General Education and Comments			
DEPT	NUM	COURSE TITLE	SEM CRED	IAI EQUIV	Dept	Number	Credit	GENERAL EDUCATION		COMMENT
ECE	219	Early Childhood Science & Math	3		NCCC	Elective	3			
ECE	229	Early Childhood Curriculum & Activities	4		EDUC	Elective	4			
ECE	234	Child Care Center Management	3		No	Credit	0			
ECE	250	Early Childhood Practicum	4		No	Credit	0			
ECE	290	Topics in Early Childhood Education	6		No	Credit	0			
ECO	150	Introduction to Economics	3	S3 900	ECON	100	3	SOC		
ECO	251	Microeconomics	3	S3 902	ECON	200	3	SOC		
ECO	252	Macroeconomics	3	S3 901	ECON	205	3	SOC		
ECO	261	Economic Development Dynamics	3		ECON	Elective	3	SOC		
EDU	251	Introduction to Education	3		EDUC	101	3	SOC	POW	
EDU	252	Children's Literature	3		ENGL	Elective	3	ART		Only one of EDU 252 or ENG 277 transfer
EDU	253	Children with Exceptionalities	3		EDUC	330	3			May not use to fulfill 300-level req. in major/minor
EDU	255	Diversity of Schools	3		EDUC	Elective	3			
EDU	257	Language Development	3		EDUC	Elective	3			
EDU	261	Intro to Foundations of Reading	3		EDUC	Elective	3			
EDU	275	Classroom Observation	3		EDUC	Elective	3			Maximum 30 clinical hours transfer
EDU	290	Topics in Education	3			Elective				Evaluated individually
EGR	151	Engineering Graphics	4		ENGR	Elective	4			
EGR	251	Statics	3		PHYS	211	3			
EGR	252	Dynamics	3		PHYS	Elective	3			
EGR	260	Electrical Circuits Analysis	4		ELEC	150	4			
EMS		Emergency Medical Services			No	Credit	0			No credit transfers from this department
ENG		All Courses Numbered Below 100			No	Credit	0			
ENG	105	Technical Communications	3		No	Credit	0			
ENG	108	Writing for the Web	3		MEDI	200	3	HUM	POW	
ENG	151	Composition I	3	C1 900	ENGL	110	3	COMP		
ENG	152	Composition II	3	C1 901R	ENGL	110	3	COMP		or WRI if ENG 151 is complete
ENG	240	Introduction to Shakespeare	3	H3 905	ENGL	302	3	HUM		May not use to fulfill 300-level req for major/minor
ENG	250	Creative Writing	3		ENGL	210	3	ART		
ENG	251	Introduction to Literature	3	H3 900	ENGL	Elective	3	HUM		
ENG	252	Studies In Literature	3		ENGL	Elective	3	HUM		
ENG	253	World Literature to 1650	3	H3 906	ENGL	Elective	3	HUM		
ENG	254	World Literature 1650 to Present	3	H3 907	ENGL	Elective	3	HUM		
ENG	255	British Literature to 1800	3	H3 912	ENGL	202	3	HUM		
ENG	256	British Literature 1800 to Present	3	H3 913	ENGL	206	3	HUM		
ENG	260	American Literature to 1860	3	H3 914	ENGL	Elective	3	HUM		
ENG	261	American Literature 1860 to Present	3	H3 915	ENGL	208	3	HUM		
ENG	270	The Bible As Literature	3	H5 901	RELG	110	3	HUM	ETH	
ENG	271	Greek and Roman Mythology	3	H9 901	CLSS	250	3	HUM		
ENG	272	Non-Western Mythologies	3	H9 901	ENGL	Elective	3	HUM		
ENG	275	Women's Literature	3	H3 911D	ENGL	234	3	HUM	POW	
ENG	276	Asian Literature	3	H3 908N	ENGL	Elective	3	HUM		
ENG	277	Introduction to Children's Literature	3	H3 918	ENGL	Elective	3	HUM	ETH	Only one of ENG 277 or EDU 252 transfer
FRE	151	Elementary French I	4		FREN	101	4			
FRE	152	Elementary French II	4		FREN	102	4			
FRE	251	Intermediate French I	4		FREN	201	4			
FRE	252	Intermediate French II	4	H1 900	FREN	202	4	HUM		
FRS		Fire Science			No	Credit	0			No credit transfers from this department
GEG	107	Introducion to Physical Geography	4	P1 909	SCIE	Elective	4	SCI		
GEG	123	Energy Resources	3	P9 900	SCIE	Elective	3	SCI		
GEG	124	Energy Resources Lab	1	P9 900	SCIE	Elective	1	SCI		Credit transfers if student has credit for GEG 123
GEG	202	Geography of The Developed World	3	S4 901	SOCI	Elective	3	SOC		
GEG	203	Geography of The Developing World	3	S4 902N	SOCI	Elective	3	SOC		
GEG	220	The Global Environment	3	L1 905	SCIE	Elective	3	SCI		
GEG	221	The Global Environment Lab	1	L1 905L	SCIE	Elective	1	SCI		
GEG	290	Topics in Geography	3			Elective				Evaluated individually
GEL	105	Introduction to Physical Geology	4	P1 907	SCIE	Elective	4	SCI		

**COURSE SUBSTITUTIONS FOR STUDENTS TRANSFERRING FROM MCHENRY COUNTY COLLEGE TO NORTH CENTRAL COLLEGE**

*Based on the 2024-2025 McHenry County College Catalog and the 2024-2025 North Central College Catalog*

McHenry County College Courses				NCC Courses			NCC General Education and Comments				
DEPT	NUM	COURSE TITLE	SEM CRED	IAI EQUIV	Dept	Number	Credit	GENERAL EDUCATION			COMMENT
GEL	110	Geology of the National Parks	3	P1 907	SCIE	Elective	3	SCI			
GER	151	Elementary German I	4		GRMN	101	4				
GER	152	Elementary German II	4		GRMN	102	4				
GER	251	Intermediate German I	4		GRMN	201	4				
GER	252	Intermediate German II	4	H1 900	GRMN	202	4	HUM			
GRA	100	Adobe Design Suite	3		No	Credit	3				
GRA	123	Digital 2D Design	3		ARTD	Elective	3				
GRA	125	Digital Drawing 1	3		ARTD	Elective	3				
GRA	167	Graphic Design I	3		ARTD	140	3				
GRA	168	Computer Art I	3		ARTD	Elective	3				
GRA	180	History of Graphic Design	3		ARTD	Elective	3				
GRA	183	Typography I	3		ARTD	242	3				
GRA	185	Color Theory	3		ARTD	Elective	3				
GRA	267	Graphic Design II	3		ARTD	244	3				
GRA	275	Portfolio Design	3		No	Credit	0				
HCE	100	Introduction to Health Careers	3		HTSC	155	3				
HCE		All Other Health Sciences			No	Credit	0				No credit transfers from this department
HFE	101	Volleyball I	1		KINE	Activity	1				A maximum 8 hours of KINE activity transfer
HFE	103	Martial Arts/Self-Defense	1		KINE	Activity	1				A maximum 8 hours of KINE activity transfer
HFE	105	Yoga I	1		KINE	Activity	1				A maximum 8 hours of KINE activity transfer
HFE	106	Tai Chi	1		KINE	Activity	1				A maximum 8 hours of KINE activity transfer
HFE	110	Golf I	1		KINE	Activity	1				A maximum 8 hours of KINE activity transfer
HFE	120	Physical Fitness	1		KINE	Activity	1				A maximum 8 hours of KINE activity transfer
HFE	121	Strength Training I	1		KINE	Activity	1				A maximum 8 hours of KINE activity transfer
HFE	122	Aerobic Exercise	1		KINE	Activity	1				A maximum 8 hours of KINE activity transfer
HFE	123	Fitness Walking	1		KINE	Activity	1				A maximum 8 hours of KINE activity transfer
HFE	125	Fencing I	1		KINE	Activity	1				A maximum 8 hours of KINE activity transfer
HFE	140	Theories of Baseball and Softball	2		KINE	Elective	2				
HFE	141	Theory of Basketball	2		KINE	Elective	2				
HFE	150	Contemporary Health Issues	3		HTSC	Elective	3				
HFE	151	First Aid and CPR	2		HTSC	100	2	WEL			
HFE	152	Women's Health Issues	3		HTSC	Elective	2				
HFE	161	Personal Fitness	3		HTSC	Elective	3				
HFE	170	Fitness Professions	1		No	Credit	0				
HFE	171	Exercise Science I	3		KINE	Elective	3				
HFE	175	Group Exercise Principles	2		KINE	Elective	2				
HFE	176	Strength & Conditioning Principles	2		KINE	Elective	2				
HFE	202	Lifeguard Training	2		KINE	Elective	2				
HFE	210	Golf II	1		KINE	Activity	1				A maximum 8 hours of KINE activity transfer
HFE	221	Strength Training II	1		KINE	Activity	1				A maximum 8 hours of KINE activity transfer
HFE	250	Nutrition For Wellness	3		HTSC	Elective	3				
HFE	251	Drugs In A Contemporary Society	3		KINE	Elective	3				
HFE	252	Issues in Family Violence	3		KINE	Elective	3				
HFE	255	Stress Management	3		HTSC	Elective	3				
HFE	260	Exercise Psychology and Motivation	3		KINE	Elective	3				
HFE	270	Exercise Testing & Program Design	3		KINE	Elective	3				
HFE	271	Exercise Physiology	3		KINE	Elective	3				
HFE	279	HFE Internship	2		No	Credit	0				
HFE	280	Health Coaching	3		KINE	Elective	3				
HFE	290	Topics in Health and Fitness Education	3			Elective					Evaluated individually
HIS	130	Ancient Civilization (to 300CE)	3		HIST	Elective	3	HUM			
HIS	131	Western Civilization I, 300 BCE-1500	3	S2 902	HIST	101	3	HUM			
HIS	132	Western Civilization II 1500CE-Pres	3	S2 903	HIST	102	3	HUM	GLO		
HIS	141	Women's History	3		HIST	242	3				
HIS	165	History of Latin America	3	S2 920N	HIST	175	3				
HIS	170	United States History I	3	S2 900	HIST	Elective	3	SOC	GLO	POW	HIS 170 + HIS 180 = HIST 222
HIS	172	United States History II	3	S2 901	HIST	Elective	3	SOC	GLO	POW	HIS 172 + HIS 180 = HIST 224

**COURSE SUBSTITUTIONS FOR STUDENTS TRANSFERRING FROM MCHENRY COUNTY COLLEGE TO NORTH CENTRAL COLLEGE**

*Based on the 2024-2025 McHenry County College Catalog and the 2024-2025 North Central College Catalog*

<i>McHenry County College Courses</i>											<i>NCC Courses</i>			<i>NCC General Education and Comments</i>				
DEPT	NUM	COURSE TITLE	SEM CRED	IAI EQUIV	Dept	Number	Credit	GENERAL EDUCATION			COMMENT							
HIS	180	History of Illinois	3		HIST	Elective	3	SOC										
HIS	290	Topics in History	3			Elective	0				Evaluated individually							
HIT		Health Information Technology	3		No	Credit	0				No credit transfers from this department							
HRT	103	Introduction to Plant Science	4	L1 901L	BIOL	Elective	4	SCI										
HRT		All other Horticulture courses			No	Credit	0											
IMT		Manufacturing Management			No	Credit	0				No credit transfers from this department							
IND		Independent Study Courses				Elective					Evaluated individually							
JRN	152	Introduction to Mass Communication	3		COMM	185	3	SOC	GLO	POW								
JRN	155	Media News Writing	3		MEDI	225	3											
JRN	165	Introduction to Broadcasting	3		MEDI	101	3											
JRN	170	Media Feature Writing	3		MEDI	Elective	3											
JRN	180	Introduction to Film	3	F2 908	FILM	100	3	ART	GLO									
JRN	220	Advanced Film	3		FILM	Elective	3											
JRN	290	Topics in Journalism	3			Elective					Evaluated individually							
LAS	250	Leadership Development	3		NCCC	Elective	3											
LAS	290	Topics in Inter-Disciplinary Studies				Elective					Evaluated individually; Credit varies							
LIB	110	Information Literacy & Research	1		No	Credit	0											
MAD		Mobile Application Development			No	Credit	0				No credit transfers from this department							
MAT		All Courses Numbered Below 100			No	Credit	0											
MAT	106	Applied Mathematics I	3		No	Credit	0											
MAT	107	Mathematics For Electronics II	3		No	Credit	0											
MAT	120	General Education Statistics	3	M1 902	PSYC	250	3	QUA			Only one of MAT 120 or MAT 220 transfers							
MAT	140	Concepts in Mathematics	3		No	Credit	0											
MAT	150	Elements of Mathematics	3	M1 904	MATH	120	3	QUA										
MAT	158	Applied Mathematics II	3		MATH	Elective	3											
MAT	159	Mathematics for Electronics III	3		No	Credit	0											
MAT	161	College Algebra	3		MATH	Elective	3				Only one of MAT 161 or MAT 165 transfers							
MAT	165	College Algebra and Trigonometry	5		MATH	140	5				Only one of MAT 165 or MAT 166 transfers							
MAT	166	Trigonometry	3		MATH	140	3				Only one of MAT 165 or MAT 166 transfers							
MAT	170	Finite Mathematics	3	M1 906	MATH	130	3	QUA										
MAT	171	Calculus For Business/Social Science	4	M1 900	MATH	Elective	4	QUA										
MAT	175	Calculus with Analytic Geometry I	5	M1 900-1	MATH	151	5	QUA										
MAT	201	Math Foundations For Elem Educ I	3		MATH	107	3											
MAT	202	Math Foundations For Elem Educ II	3	M1 903	MATH	108	3											
MAT	220	Statistics	3	M1 902	BUSN	265	3	QUA			Only one of MAT 120 or MAT 220 transfers							
MAT	245	Calculus with Analytic Geometry II	5	M1 900-2	MATH	152	5											
MAT	253	Linear Algebra	4		MATH	300	4				May not use to fulfill 300-level req. in major/minor							
MAT	255	Calculus with Analytic Geometry III	4	M1 900-3	MATH	253	4											
MAT	260	Differential Equations	3		MATH	315	3				May not use to fulfill 300-level req. in major/minor							
MCC		College Experience			No	Credit	0				No credit transfers from this department							
MGT	110	Supervisory Responsibility	3		MGMT	Elective	3											
MGT	150	Principles of Management	3		MGMT	305	3				May not use to fulfill 300-level req for major/minor							
MGT	205	Creative Leadership	3		No	Credit	0											
MGT	210	Human Resources Management	3		MGMT	345	3				May not use to fulfill 300-level req in major/minor							
MGT	225	Cross Cultural Management	3		MGMT	Elective	3											
MGT	230	Experiencing Management Decisions	3		MGMT	Elective	3											
MKT	110	Principles of Marketing	3		MKTG	300	3				May not use to fulfill 300-level req in major/minor							
MKT	120	Principles of Advertising	3		MKTG	Elective	3											
MKT	130	Professional Selling	3		MKTG	340	3				May not use to fulfill 300-level req in major/minor							
MKT	140	Principles of Retailing	3		MKTG	Elective	3											
MKT	160	Social Media Marketing	3		MKTG	Elective	0											
MKT	225	Consumer Behavior	3		MKTG	310	3				May not use to fulfill 300-level req in major/minor							
MKT	240	Regional Agriculture Marketing	3		No	Credit	0											
MKT	249	Marketing Internship	3			Elective					Evaluated individually							
MKT	264	International Marketing	3		MKTG	460	3				May not use to fulfill 400-level req in major/minor							
MKT	290	Topics & Issues in Marketing	1-6			Elective					Evaluated individually							
MUS	100	Chorus	1		MUEN	100	1											



**COURSE SUBSTITUTIONS FOR STUDENTS TRANSFERRING FROM MCHENRY COUNTY COLLEGE TO NORTH CENTRAL COLLEGE**

*Based on the 2024-2025 McHenry County College Catalog and the 2024-2025 North Central College Catalog*

McHenry County College Courses											NCC Courses			NCC General Education and Comments				
DEPT	NUM	COURSE TITLE	SEM CRED	IAI EQUIV	Dept	Number	Credit	GENERAL EDUCATION			COMMENT							
MUS	101	Fundamentals of Music	3		MUSI	Elective	3											
MUS	104	Intro to Electronic Music Processing	3		MUSI	Elective	3											
MUS	111	Class Piano I	2		MUAL	110	2											
MUS	140	Music Theory I	3		MUSI	101	3											
MUS	141	Musicianship I	2		MUSI	Elective	2											
MUS	145	Music Theory II	3		MUSI	102	3											
MUS	146	Musicianship II	2		MUSI	108	2											
MUS	151	Music Appreciation	3	F1 900	MUSI	150	3	ART										
MUS	153	Introduction to Non-Western Music	3	F1 903N	MUSI	156	3	ART	GLO									
MUS	154	Introduction to American Music	3	F1 904	MUSI	Elective	3	ART										
MUS	160	Jazz Ensemble	1		MUEN	120	1											
MUS	161	Chamber Ensemble	1		MUEN	Ensemble	1											
MUS	162	Concert Band	1		MUEN	113	1											
MUS	163	Dixieland Band	1		MUEN	Elective	1											
MUS	164	Guitar Ensemble	1		MUEN	Elective	1											
MUS	165	Chamber Singers	1		MUEN	104	1											
MUS	171	Music History I	3	F1 901	MUSI	Elective	3	ART			MUS 171 + MUS 172 = MUSI 258							
MUS	172	Music History II	3	F1 902	MUSI	Elective	3	ART			MUS 171 + MUS 172 = MUSI 258							
MUS	201	Applied Music - Oboe	2		MUAL	121	2											
MUS	202	Applied Music - Organ	2		MUAL	112	2											
MUS	203	Applied Music - Piano	2		MUAL	110	2											
MUS	204	Applied Music - French Horn	2		MUAL	140	2											
MUS	205	Applied Music - Voice	2		MUAL	100	2											
MUS	206	Applied Music - Violin	2		MUAL	180	2											
MUS	207	Applied Music - Saxophone	2		MUAL	124	2											
MUS	208	Applied Music - Clarinet	2		MUAL	122	2											
MUS	209	Applied Music - String & Electric Bass	2		MUAL	189	2											
MUS	210	Applied Music - Trumpet	2		MUAL	141	2											
MUS	211	Applied Music - Trombone	2		MUAL	142	2											
MUS	212	Applied Music - Baritone	2		MUAL	Elective	2											
MUS	213	Applied Music - Guitar	2		MUAL	185	2											
MUS	214	Applied Music - Flute	2		MUAL	120	2											
MUS	215	Applied Music - Viola	2		MUAL	181	2											
MUS	216	Applied Music - Cello	2		MUAL	182	2											
MUS	217	Applied Music - Percussion	2		MUAL	169	2											
MUS	218	Applied Music - Bassoon	2		MUAL	123	2											
MUS	219	Applied Music - Tuba	2		MUAL	143	2											
MUS	240	Music Theory III	3		MUSI	201	3											
MUS	241	Musicianship III	2		MUSI	Elective	2				MUS 241 + MUS 246 = MUSI 208							
MUS	245	Music Theory IV	3		MUSI	202	3											
MUS	246	Musicianship IV	2		MUSI	Elective	2				MUS 241 + MUS 246 = MUSI 208							
NAE		Nursing Assistant Education			No	Credit	0				No credit transfers from this department							
NET		Network Security			No	Credit	0				No credit transfers from this department							
NUR		Nursing			No	Credit	0				No credit transfers from this department							
OTA		Occupational Therapy Assistant			No	Credit	0				No credit transfers from this department							
PAR		Paralegal Studies			No	Credit	0				No credit transfers from this department							
PAS		Pastry			No	Credit	0				No credit transfers from this department							
PDV		Personal Development			No	Credit	0				No credit transfers from this department							
PHI	151	Introduction to Philosophy	3	H4 900	PHIL	100	3	HUM	ETH									
PHI	155	Introduction to Logic	3	H4 906	PHIL	230	3	QUA			Or HUM General Education requirement							
PHI	158	Studies About Women	3		GSST	Elective	3	SOC										
PHI	160	Eastern Philosophy	3	H4 903N	PHIL	Elective	3	HUM	ETH									
PHI	240	Philosophy of Religion	3	H4 905	PHIL	360	3	HUM	ETH		May not use to fulfill 300-level req in major/minor							
PHI	251	Introduction to Ethics	3	H4 904	PHIL	110	3	HUM	ETH									
PHI	252	Bioethics	3		PHIL	213	3	HUM	ETH									
PHI	255	Living with Death	3		RELG	250	3	HUM	ETH									
PHI	261	Religions of The World	3	H5 904N	RELG	100	3	HUM	GLO									

**COURSE SUBSTITUTIONS FOR STUDENTS TRANSFERRING FROM MCHENRY COUNTY COLLEGE TO NORTH CENTRAL COLLEGE**

*Based on the 2024-2025 McHenry County College Catalog and the 2024-2025 North Central College Catalog*

McHenry County College Courses											NCC Courses			NCC General Education and Comments			
DEPT	NUM	COURSE TITLE	SEM CRED	IAI EQUIV	Dept	Number	Credit	GENERAL EDUCATION			COMMENT						
PHI	262	Foundational Religious Texts	3	H5 901	RELG	Elective	3	HUM									
PHI	290	Topics in Philosophy	3			Elective					Evaluated individually						
PHY	280	General Physics I	4	P1 900L	PHYS	131	4	SCI			Only one of PHY 280 or 291+292 transfer						
PHY	281	General Physics II	4		PHYS	132	4	SCI			Only one of PHY 281 or 293 transfer						
PHY	291	Principles of Physics I	4	P2 900L	PHYS	Elective	4	SCI			PHY 291 + PHY 292 = PHYS 161						
PHY	292	Principles of Physics II	4		PHYS	Elective	4				PHY 291 + PHY 292 = PHYS 161						
PHY	293	Principles of Physics III	4		PHYS	162	4				Only one of PHY 281 or 293 transfer						
PHY	294	Thermal Physics	2		PHYS	Elective	2										
PLT	150	Introduction to Political Thought	3	S5 903	POLS	Elective	3	SOC	POW								
PLT	151	United States Government	3	S5 900	POLS	101	3	SOC	POW								
PLT	155	State and Local Government	3	S5 902	POLS	Elective	3	SOC	POW								
PLT	160	The Constitution: That Delicate Balance	3		POLS	Elective	3	SOC	POW								
PLT	251	International Relations	3	S5 904N	POLS	102	3	SOC	GLO								
PLT	255	Comparative Government	3	S5 905	POLS	221	3	SOC	GLO								
PLT	261	Modern Latin America	3		POLS	Elective	3	SOC									
PLT	281	Introduction to Asia	3		POLS	Elective	3	SOC									
PRG	105	Programming Logic	3		CSCE	Elective	3										
PRG	147	Javascript Programming I	3		INFS	Elective	3				May not be repeated						
PSY	151	Introduction to Psychology	3	S6 900	PSYC	100	3	SOC									
PSY	175	Human Sexuality	3		PSYC	Elective	3										
PSY	250	Human Development Over the Life Span	3	S6 902	PSYC	235	3	SOC									
PSY	251	Child Psychology	3	S6 903	PSYC	210	3	SOC			Only one of PSY 251 or ECE 120 transfers						
PSY	260	Introduction to Gerontology	3	S6 905	PSYC	Elective	3	SOC									
PSY	265	Social Psychology	3	S8 900	PSYC	240	3	SOC									
PSY	270	Introduction to Forensic Psychology	3		No	Credit	0										
PSY	271	Educational Psychology	3		PSYC	205	3										
PSY	275	Abnormal Psychology	3		PSYC	324	3				May not use to fulfill 300-level req in major/minor						
PSY	280	Theories of Personality	3		PSYC	320	3				May not use to fulfill 300-level req in major/minor						
PSY	290	Topics in Psychology	3			Elective					Evaluated individually						
PTA		Physical Therapist Assistant			No	Credit					No credit transfers from this department						
RDG		Reading			No	Credit	0				No credit transfers from this department						
ROB		Robotics			No	Credit					No credit transfers from this department						
SOC	151	Introduction to Sociology	3	S7 900	SOCI	100	3	SOC									
SOC	175	Sociology of Families	3	S7 902	SOCI	342	3	GLO			May not use to fulfill 300-level req in major/minor						
SOC	251	Social Problems	3	S7 901	SOCI	Elective	3	SOC									
SOC	256	Sociology of Deviance	3		SOCI	Elective	3	SOC									
SOC	260	Sociology of Race and Ethnicity	3	S7 903D	SOCI	211	3	SOC	POW								
SOC	261	Sociology of Sex and Gender	3	S7 904D	SOCI	210	3	SOC	POW								
SPA	101	Occupational Spanish I	3		No	Credit	0										
SPA	102	Occupational Spanish II	3		No	Credit	0										
SPA	151	Elementary Spanish I	4		SPAN	101	4										
SPA	152	Elementary Spanish II	4		SPAN	102	4										
SPA	251	Intermediate Spanish I	4		SPAN	201	4										
SPA	252	Intermediate Spanish II	4	H1 900	SPAN	202	4	HUM									
SPA	271	Advanced Spanish Conv & Comp I	3		SPAN	Elective	3										
SPA	272	Advanced Spanish Conv & Comp II	3		SPAN	Elective	3										
SPA	290	Topics in Spanish	3			Elective					Evaluated individually						
SPE	151	Introduction to Speech	3	C2 900	COMM	110	3										
SPE	155	Interpersonal Communication	3		COMM	200	3	SOC									
SPE	161	Small Group Communication	3		COMM	214	3	SOC									
SPE	251	Intercultural Communication	3		COMM	317	3	SOC	GLO		May not use to fulfill 300-level req in major/minor						
SPE	265	Fundamentals of Oral Interpretation	3		COMM	Elective	3										
THE	151	Introduction to Theatre	3	F1 907	THEA	102	3	ART									
THE	153	Theatre Practice	1-5		THEA	115	3				Credit varies						
THE	157	Acting I-Preparation	3		THEA	150	3										
THE	158	Acting II-The Actor At Work	3		THEA	250	3										
THE	159	Stagecrafts	3		THEA	141	3										

**COURSE SUBSTITUTIONS FOR STUDENTS TRANSFERRING FROM MCHENRY COUNTY COLLEGE TO NORTH CENTRAL COLLEGE**

*Based on the 2024-2025 McHenry County College Catalog and the 2024-2025 North Central College Catalog*

<i>McHenry County College Courses</i>				<i>NCC Courses</i>			<i>NCC General Education and Comments</i>				
DEPT	NUM	COURSE TITLE	SEM CRED	IAI EQUIV	Dept	Number	Credit	GENERAL EDUCATION			COMMENT
WEB	105	Web Fundamentals	3		No	Credit	0				
WEB	115	HTML & CSS	3		CSCE	Elective	3				
WEB	175	Website Development I	3		INFS	115	3				May not repeat
WEB	212	PHP and MySQL	3		CSCE	Elective	3				