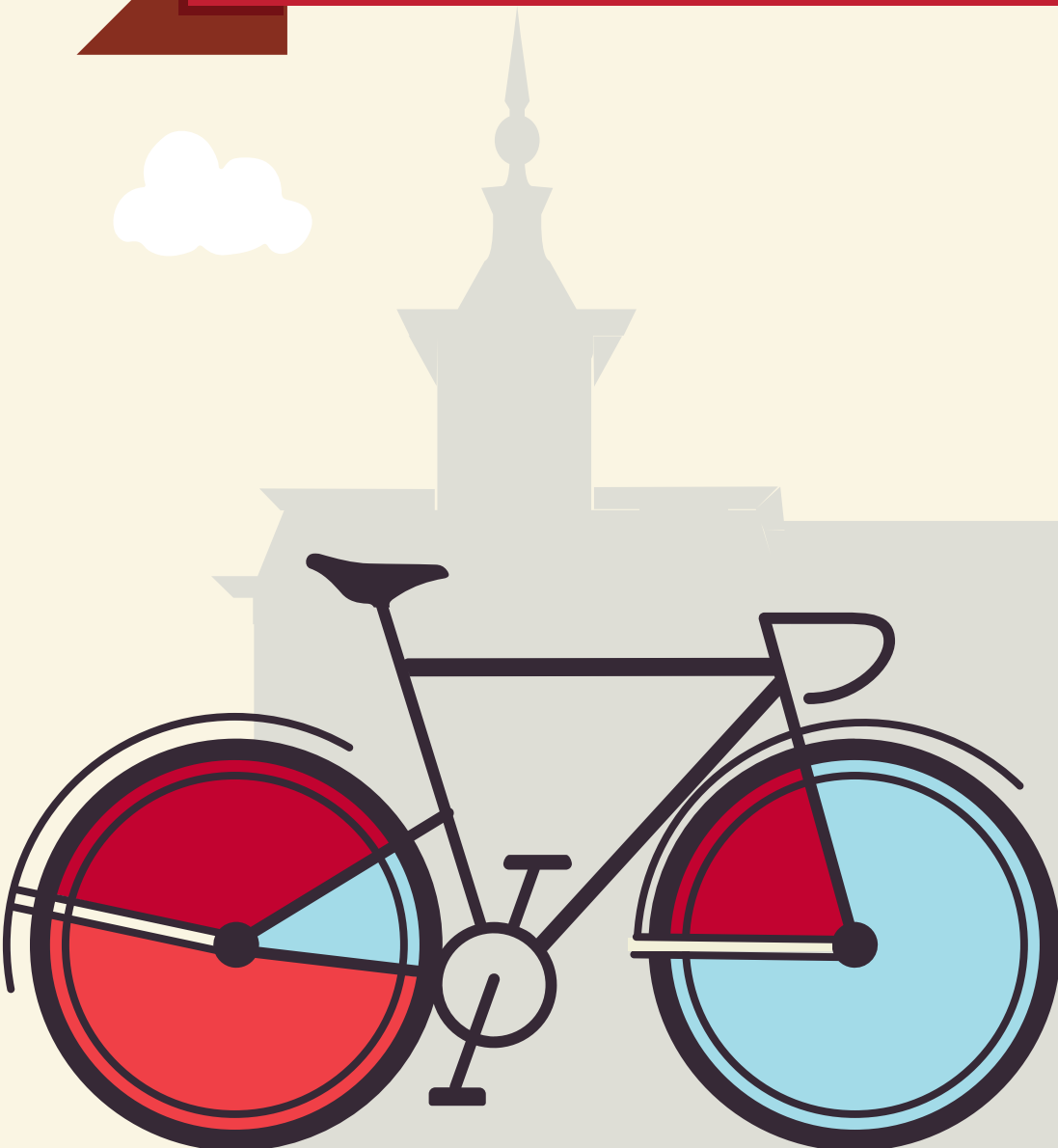


# YOUR GUIDE TO TRANSFERRING TO NORTH CENTRAL COLLEGE

MORAIN VALLEY COMMUNITY COLLEGE





This guide is based on the 2024-2025 Moraine Valley Community College catalog, and the 2024-2025 North Central College catalog. North Central College reserves the right to alter any information listed in this guide, including the transferability of courses, without notice or obligation. For assistance with this guide, please call the Office of Admission at (630) 637-5800 or email at [admissions@noctrl.edu](mailto:admissions@noctrl.edu).

How to use this guide: This course substitution guide is designed to help you select courses at Moraine Valley Community College if you plan to transfer to North Central College. Working with your MVCC advisor and NCC transfer admission counselor, refer to this guide to determine courses that meet North Central College requirements in our general education curriculum, academic major and minor requirements, and electives. Your NCC counselor can also provide a major planning worksheet. Listed below is a sample from this guide:

MVCC Course Numbers, Titles, Credit					NCC Equivalent Course Numbers & Credit			NCC General Education Codes			Important Information about courses
DEPT	NUM	COURSE TITLE	CREDIT	IAI EQUIV	DEPT	NUM	CREDIT	GENERAL EDUCATION			COMMENTS
ANT	201	Introductory Physical Anthropology	3	S1 902	ANTH	Elective	3	SCI			ANT 201 + ANT 210 = ANTH 165
ANT	202	Introduction to Cultural Anthropology	3	S1 901N	ANTH	Elective	3	SOC	GLO		

The Cardinal Directions general education curriculum at North Central College is as follows, along with the general education codes you will find in this guide. Please note the column to the far right which indicates which of these requirements may be waived (or required) based on the level of education you achieve prior to transferring. For additional details, please reference the NC catalog: <http://catalog.noctrl.edu/content.php?catoid=26&navoid=2582>.

## CARDINAL DIRECTIONS CURRICULUM MAP

Requirement	General Education Code	Credit	Comments
Composition	COMP	4 credits	Met with A.A. or A.S. degree
Writing Intensive	WRI	4 credits	Met with A.A. or A.S. degree
Public Speaking	COM	4 credits	Met with A.A. or A.S. degree
Arts	ART	4 credits	Met with A.A. or A.S. degree
Humanities	HUM	4 credits	Met with A.A. or A.S. degree
Social Science	SOC	4 credits	Met with A.A. or A.S. degree
Science	SCI	4 credits	Met with A.A. or A.S. degree
Quantitative Analysis	QUA	4 credits	Met with A.A. or A.S. degree
Power Structures or Global Understanding	POW or GLO	4 credits	Met with A.A. or A.S. degree GLO may be met with Study Abroad at NCC
Ethical Dimensions	ETH	4 credits	Met with A.A. or A.S. degree
Well Being	WEL	2 credits	Met with A.A. or A.S. degree
Experiential (One of the following):	-Community Engaged Learning -Study Away/Study Abroad -Student Research -CARD 400 –Senior Seminar: Liberal Arts and Problems of Today	2 credits	Met with A.A. or A.S. degree
Career Readiness: Preparation and Experiential*	CARD 250 – Career Preparation CARD 300 – Career Experiential	4 credits total	*Must be taken at NC

- An equivalent 3-credit transfer course may be used to fulfill a General Education requirement.
- One course may fulfill multiple requirements.
- College Transfer Credits are courses taken at a college or university after graduating high school and not earned through AP, IB, or CLEP.
- Only 64 semester hours (96 quarter hours) may transfer from a 2-yr college. Developmental courses (under 100-level) do not transfer.
- Requirements met through an eligible A.A. or A.S. degree may also be met with an eligible A.A.S. degree only if applied to the B.A.S. degree.
- Students with less than 28 transferable hours will need to complete CARD 110, a 1-credit transition course.

**COURSE SUBSTITUTIONS FOR STUDENTS TRANSFERRING FROM MORAIN VALLEY COMMUNITY COLLEGE TO NORTH CENTRAL COLLEGE**

*Based on the 2022-2023 Moraine Valley Community College Catalog and the 2024-2025 North Central College Catalog*

<i>Moraine Valley Community College Courses</i>					<i>NCC Courses</i>			<i>NCC General Education and Comments</i>			
DEPT	NUM	COURSE TITLE	SEM CRED	IAI EQUIV	Dept	Number	Credit	GENERAL EDUCATION		COMMENT	
ADC		Addictions Studies			No	Credit	0			No credit transfers from this department	
AET		Automation and Engineering Technology			No	Credit	0			No credit transfers from this department	
ANT	100	Introduction to Anthropology	3		ANTH	Elective	3	SOC			
ANT	201	Introductory Physical Anthropology	3	S1 902	ANTH	Elective	3	SCI		ANT 201 + ANT 210 = ANTH 165	
ANT	202	Introduction to Cultural Anthropology	3	S1 901N	ANTH	Elective	3	SOC	GLO		
ANT	205	North American Indians	3		ANTH	355	3	SOC		May not use to fulfill 300-level req in major/minor	
ANT	210	Introduction to Archaeology	3	S1 903	ANTH	Elective	3	SOC		ANT 201 + ANT 210 = ANTH 165	
ARB	101	Arabic I	4		ARAB	101	4				
ARB	102	Arabic II	4		ARAB	102	4				
ARB	201	Arabic III	4		ARAB	Elective	4			Consult the MCL department for placement	
ARB	202	Arabic IV	4	H1 900	ARAB	Elective	4	HUM		Consult the MCL department for placement	
ART	101	Drawing I	3		ARTD	120	3	ART			
ART	104	Drawing II	3		ARTD	220	3				
ART	105	Life Drawing	3		ARTD	225	3				
ART	106	Drawing Comics	3		ARTD	Elective	3				
ART	110	Art Appreciation	3	F2 900	ARTD	100	3	ART			
ART	116	Two-Dimensional Design	3		ARTD	107	3				
ART	118	Three-Dimensional Design	3		ARTD	160	3				
ART	120	Beginning Painting	3		ARTD	130	3	ART			
ART	121	Watercolor Painting	3		ARTD	135	3				
ART	122	Intermediate Painting	3		ARTD	230	3				
ART	125	Ceramics I	3		ARTD	150	3	ART			
ART	126	Ceramics II	3		ARTD	250	3				
ART	146	Introduction to Computer Art	3		ARTD	140	3				
ART	150	Sculpture	3		ARTD	260	3	ART			
ART	160	Darkroom Photography: Introduction	3		ARTD	Elective	3				
ART	161	Camera and Darkroom Techniques	3		ARTD	175	3	ART			
ART	162	Photographic Design	3		ARTD	105	3				
ART	163	Alternative Photographic Processes	3		ARTD	Elective	3				
ART	165	Digital Photography Introduction	3		ARTD	275	3				
ART	170	Printmaking	3		ARTD	210	3				
ART	171	Printmaking II	3		ARTD	310	3			May not use to fulfill 300-level req in major/minor	
ART	180	Digital Photography Imagery	3		ARTD	205	3				
ART	182	Digital Illustration	3		MEDI	Elective	3				
ART	184	Digital Imaging	3		INFS	109	3			No credit if ART 146 is completed	
ART	186	Design I: Layout	3		MEDI	Elective	3				
ART	205	Survey of Art I	3	F2 901	ARTH	100	3	ART	GLO		
ART	206	Survey of Art II	3	F2 902	ARTH	102	3	ART	GLO		
ART	207	Survey of American Art	3		ARTH	310	3	ART	POW	May not use to fulfill 300-level req in major/minor	
ART	208	Survey of Art III	3	F2 902	ARTH	302	3	WRI		May not use to fulfill 300-level req in major/minor	
ART	209	Survey of Non-Western Art	3	F2 903N	ARTD	264	3	ART			
ART	230	Digital Design Internship	3			Elective				Evaluated individually	
ART	231	Art Seminar	2		ARTD	Elective	2				
ART	232	Digital Portfolio Development	3		No	Credit	0				
ART	246	Advanced Computer Art	3		ARTD	Elective	3				
ART	248	Design II: Interface	3		ARTD	Elective	3				
ART	251	Digital Art/Design: Special Topics	3			Elective				Evaluated individually	
ART	280	Independent Studio: Drawing	3		ARTD	Elective	3				
ART	281	Independent Studio: Painting	3		ARTD	Elective	3				
ART	282	Independent Studio: Ceramics	3		ARTD	Elective	3				
ART	283	Independent Studio: Photography	3		ARTD	Elective	3				

**COURSE SUBSTITUTIONS FOR STUDENTS TRANSFERRING FROM MORAINE VALLEY COMMUNITY COLLEGE TO NORTH CENTRAL COLLEGE**

*Based on the 2022-2023 Moraine Valley Community College Catalog and the 2024-2025 North Central College Catalog*

<i>Moraine Valley Community College Courses</i>					<i>NCC Courses</i>			<i>NCC General Education and Comments</i>				
DEPT	NUM	COURSE TITLE	SEM CRED	IAI EQUIV	Dept	Number	Credit	GENERAL EDUCATION			COMMENT	
ART	284	Independent Studio: Design	3		ARTD	Elective	3					
ASL	101	American Sign Language I	3		LANG	101	3					
ASL	102	American Sign Language II	3		LANG	102	3					
ASL	103	American Sign Language III	3		LANG	Elective	3					
ASL	110	Deaf Culture and History	3		LANG	Elective	3					
ASL	114	Fingerspelling and Numbers in ASL	3		LANG	Elective	3					
ASL	121	Linguistics of ASL	3		LANG	Elective	3					
ASL	201	American Sign Language IV	3		LANG	Elective	3					
ASL	215	American Sign Language V	3		LANG	Elective	3					
ASL	216	American Sign Language VI	3		LANG	Elective	3					
ASL		All Other American Sign Language Courses			No	Credit						
AUT		Automotive Technology			No	Credit	0				No credit transfers from this department	
BIO	101	Survey of Biology for Non-Majors	4	L1 900L	BIOL	Elective	4	SCI				
BIO	104	Biology of Human Life	4	L1 904L	BIOL	104	4	SCI				
BIO	111	General Biology I	4	L1 910L	BIOL	Elective	4	SCI				
BIO	112	General Biology II	4	L1 910L	BIOL	Elective	4	SCI				
BIO	115	Anatomy and Physiology	5		BIOL	Elective	5					
BIO	119	Introductory Microbiology	4		BIOL	145	4					
BIO	180	Human Anatomy and Physiology I	4		BIOL	201	4				With lab including mammalian or cadaver specimens	
BIO	181	Human Anatomy and Physiology II	4		BIOL	202	4				With lab including mammalian or cadaver specimens	
BIO	182	Human Anatomy Lab I	2		BIOL	Elective	2				Cadaver lab must pass BIO 180 for credit in BIO 182	
BIO	183	Human Anatomy Lab II	2		BIOL	Elective	2				Cadaver lab must pass BIO 181 for credit in BIO 183	
BIO	211	Zoology I	4		BIOL	Elective	4					
BIO	212	Vertebrate Zoology	4		BIOL	Elective	4					
BIO	215	Physiology of Health & Disease	3		BIOL	Elective	3					
BIO	220	Ecology and Field Biology	4		BIOL	250	4					
BIO	221	Intro to Marine Biology	4		BIOL	Elective	4					
BIO	230	Botany	4		BIOL	Elective	4					
BIO	240	Biology Research	2		BIOL	Elective	2					
BUS	100	Introduction to Business	3		SBEN	100	3	SOC	ETH	GLO		
BUS	105	Small Business Management	4		BUSN	Elective	4					
BUS	107	Fundamentals of Accounting	2		No	Credit	0					
BUS	110	Legal Environment In Business	3		BUSN	205	3	ETH			Only one of BUS 110 or BUS 136 transfers	
BUS	116	Personal Investing	3		SBEN	210	3	WEL			Only one of BUS 116 or BUS 135 or ECO 100 transfers	
BUS	120	Business Mathematics	3		No	Credit	0					
BUS	130	Principles of Marketing	3		MKTG	300	3				May not use to fulfill 300-level req in major/minor	
BUS	131	Principles of Retailing	3		BUSN	Elective	3					
BUS	133	Salesmanship	3		MKTG	340	3				May not use to fulfill 300-level req in major/minor	
BUS	134	International Business	3		BUSN	201	3					
BUS	135	Personal Finance	2		SBEN	210	2	WEL			Only one of BUS 116 or BUS 135 or ECO 100 transfers	
BUS	136	Business Law	3		BUSN	205	3	ETH			Only one of BUS 110 or BUS 136 transfers	
BUS	142	Financial Accounting	4		ACCT	201	4					
BUS	143	Managerial Accounting	4		ACCT	202	4					
BUS	145	Computer Applications in Accounting	3		No	Credit	0					
BUS	148	Introduction to Finance	3		FINA	350	3				May not use to fulfill 300-level req in major/minor	
BUS	155	Display & Visual Merchandising	3		No	Credit	0					
BUS	170	Introduction to Human Resources	3		BUSN	Elective	3					
BUS	199	Specal Topics	1-4			Elective					Evaluated Individually	
BUS	200	Consumer Behavior	3		MKTG	310	3				May not use to fulfill 300-level req in major/minor	
BUS	215	Employee Training and Development	3		BUSN	Elective	3					
BUS	226	Business Ethics	3		PHIL	210	3	HUM	ETH		Only one of BUS 226 or PHI 226 transfers	

**COURSE SUBSTITUTIONS FOR STUDENTS TRANSFERRING FROM MORAINE VALLEY COMMUNITY COLLEGE TO NORTH CENTRAL COLLEGE**

*Based on the 2022-2023 Moraine Valley Community College Catalog and the 2024-2025 North Central College Catalog*

<i>Moraine Valley Community College Courses</i>					<i>NCC Courses</i>			<i>NCC General Education and Comments</i>			
DEPT	NUM	COURSE TITLE	SEM CRED	IAI EQUIV	Dept	Number	Credit	GENERAL EDUCATION		COMMENT	
BUS	230	Advertising	3		BUSN	Elective	3				
BUS	231	Principles of Management	3		MGMT	305	3			May not use to fulfill 300-level req in major/minor	
BUS	232	Human Resources Management	3		MGMT	345	3			May not use to fulfill 300-level req in major/minor	
BUS	233	Internship	3			Elective				Evaluated individually	
BUS	235	Personal Development	2		No	Credit	0				
BUS	237	Seminar	1			Elective				Evaluated individually	
BUS	240	Intermediate Accounting I	3		ACCT	317	3			May not use to fulfill 300-level req in major/minor	
BUS	241	Intermediate Accounting II	3		ACCT	318	3			May not use to fulfill 300-level req in major/minor	
BUS	242	Cost Accounting	3		ACCT	307	3			May not use to fulfill 300-level req in major/minor	
BUS	243	Federal Income Taxes	3		ACCT	Elective	3				
CAS		Cannabis Retail Specialist			No	Credit	0			No credit transfers from this department	
CGI	100	Cameras In Production	3		ARTD	Elective	3				
CGI	101	Orientation to CGI Careers	1		No	Credit	0				
CGI	102	Computer Graphics I	3		ARTD	Elective	3				
CGI	103	2D Graphic Design	3		ARTD	140	3				
CGI	104	Computer Animation I	3		ARTD	Elective	3				
CGI	110	Computer Storyboarding	2		ARTD	Elective	2				
CGI	114	Computer Animation II	3		ARTD	280	3				
CGI	115	Design Visualization	3		ARTD	Elective	3				
CGI	116	3D Computer Animation I	3		ARTD	Elective	3				
CGI	117	Game Engine	3		MEDI	Elective	3				
CGI	118	Applied Animation Techniques	3		ARTD	Elective	3				
CGI	119	Blueprints For Games	3		INFS	Elective	3				
CGI	120	3D Computer Animation II	3		ARTD	Elective	3				
CGI	122	3D Computer Character Modeling	3		MEDI	Elective	3				
CGI	125	Advanced Photoshop	3		ARTD	Elective	3				
CGI	126	Computer Physics Simulation	3		MEDI	Elective	3				
CGI	130	Effects and Compositing	3		ARTD	Elective					
CGI	199	Topics	1-3			Elective				Evaluated Individually	
CGI	210	Introduction of Game Design	3		MEDI	Elective	3				
CGI	212	Game Design Elements	3		MEDI	Elective	3				
CHM	111	Fundamentals Of Chemistry	4	P1 902L	CHEM	Elective	4	SCI			
CHM	131	Chemistry (University-Oriented) I	4	P1 902L	CHEM	121	4	SCI			
CHM	132	Chemistry (University-Oriented) II	4		CHEM	122	4				
CHM	200	Survey of Organic Chemistry	5		CHEM	Elective	5				
CHM	203	Organic Chemistry I	5		CHEM	251	5				
CHM	204	Organic Chemistry II	5		CHEM	252	5				
CIS	100	Personal Computer Basics	1		No	Credit	0				
CIS	101	Introduction to Computer Systems	3		No	Credit	0				
CIS	105	Introduction to Coding	3		CSCE	Elective	3				
CIS	108	Internet Basics	1		No	Credit	0				
CIS	111	Internet Technologies	3		No	Credit	0				
CIS	115	Microsoft Office I	3		No	Credit	0				
CIS	123	Database Design	3		CSCE	Elective	3				
CIS	124	iOS Programming I	3		No	Credit	0				
CIS	126	PHP Programming I	3		INFS	Elective	3				
CIS	131	Website and User Interface Design	3		INFS	Elective	3				
CIS	138	Video Editing: Adobe Premiere	3		MEDI	222	3				
CIS	139	VB.NET Programming I	3		CSCE	Elective	3				
CIS	142	Android Programming I	3		No	Credit	0				
CIS	146	Operating Systems	3		No	Credit	0				

**COURSE SUBSTITUTIONS FOR STUDENTS TRANSFERRING FROM MORAINE VALLEY COMMUNITY COLLEGE TO NORTH CENTRAL COLLEGE**

*Based on the 2022-2023 Moraine Valley Community College Catalog and the 2024-2025 North Central College Catalog*

<i>Moraine Valley Community College Courses</i>										<i>NCC Courses</i>			<i>NCC General Education and Comments</i>		
DEPT	NUM	COURSE TITLE	SEM CRED	IAI EQUIV	Dept	Number	Credit	GENERAL EDUCATION			COMMENT				
CIS	151	Website Development: HTML and CSS	3		INFS	115	3								
CIS	154	C# Programming I	3		CSCE	Elective	3				Consult CSCE department for placement				
CIS	160	C++ Programming I	3		CSCE	160	3				Only one of CSC 140, CIS 160, 165 or 176 transfers				
CIS	165	Python Programming	3		CSCE	160	3				Only one of CSC 140, CIS 160, 165 or 176 transfers				
CIS	176	Java Programming I	3		CSCE	160	3				Only one of CSC 140, CIS 160, 165 or 176 transfers				
CIS	199	Special Short Topics in Technology	1			Elective					Evaluated individually				
CIS	200	Special Topics in Technology	3			Elective					Evaluated individually				
CIS	210	Project Management	3		No	Credit	0								
CIS	224	iOS Programming II	3		INFS	Elective	3								
CIS	226	PHP Programming II	3		INFS	Elective	3								
CIS	232	Introduction to Adobe Creative Suite	3		INFS	Elective	3								
CIS	234	Adobe Illustrator	3		INFS	Elective	3								
CIS	235	Adobe InDesign & Microsoft Publisher	3		INFS	Elective	3								
CIS	236	Adobe Photoshop	3		INFS	Elective	3								
CIS	238	Adv. Video Editing: Adobe After Effect	3		MEDI	Elective	3								
CIS	239	VB.Net Programming II	3		CSCE	Elective	3								
CIS	242	Android Programming II	3		INFS	Elective	3								
CIS	251	Advanced Website Developmnt: Javascript & jQuery	3		INFS	215	3								
CIS	254	C# Programming II	3		CSCE	Elective	3								
CIS	276	Java Programming II	3		CSCE	Elective	3				Consult CSCE department for placement				
CIS	285	ASP.NET Web Applications	3		No	Credit	0								
CIS	289	Advanced .NET Development	3		CSCE	Elective	3								
CIS	292	SQL/Database Applications	3		CSCE	Elective	3								
CIS	295	Internship	3			Elective					Evaluated individually				
CIS	297	Website Design: WordPress	3		INFS	Elective	3								
COL	101	College: Changes, Challenges, Choices	1		No	Credit	0								
COM		All Courses Numbered below 100			No	Credit	0								
COM	101	Composition I	3	C1 900R	ENGL	110	3	COMP							
COM	102	Composition II	3	C1 901	ENGL	110	3	COMP			or WRI if ENG 101 is complete				
COM	103	Speech Fundamentals	3	C2 900	COMM	110	3								
COM	104	Introduction to Creative Writing	3		ENGL	Elective	3								
COM	106	Creative Writing, Poetry	3		ENGL	240	3								
COM	107	Creative Writing, Fiction	3		ENGL	244	3								
COM	108	Creative Writing, Literary Nonfiction	3		ENGL	242	3								
COM	120	Introduction To Linguistics	3		ENGL	Elective	3								
COM	123	Applied Forensics	3		COMM	119	3								
COM	125	Tutoring Internship	1		No	Credit	0								
COM	151	Student Publications Seminar	1			Elective					Evaluated individually; A max 6 hours of practicum				
COM	152	Student Publications Seminar	1			Elective					Evaluated individually; A max 6 hours of practicum				
COM	153	Student Publications Seminar	1			Elective					Evaluated individually; A max 6 hours of practicum				
COM	154	Student Publications Seminar	1			Elective					Evaluated individually; A max 6 hours of practicum				
COM	201	Business and Technical Writing	3		ENGL	280	3								
COM	203	Interpersonal Communication	3		COMM	200	3								
COM	204	Argumentation	3		COMM	285	3								
COS		College Skills			No	Credit	0				No credit transfers from this department				
CRJ	101	Introduction to Criminal Justice	3		SOCI	340	3	GLO			May not use to fulfill 300-level req in major/minor				
CRJ	105	Criminology	3		CRIM	100	3								
CRJ	106	Introduction to Corrections	3		No	Credit	0								
CRJ	107	Juvenile Delinquency & Procedures	3		SOCI	221	3	POW			May not use to fulfill 300-level req in major/minor				
CRJ	109	Introduction to Domestic Violence	3		SOCI	Elective	3								
CRJ	110	Introduction to Homeland Security	3		No	Credit	0								

**COURSE SUBSTITUTIONS FOR STUDENTS TRANSFERRING FROM MORAINE VALLEY COMMUNITY COLLEGE TO NORTH CENTRAL COLLEGE**

*Based on the 2022-2023 Moraine Valley Community College Catalog and the 2024-2025 North Central College Catalog*

<i>Moraine Valley Community College Courses</i>											<i>NCC Courses</i>			<i>NCC General Education and Comments</i>			
DEPT	NUM	COURSE TITLE	SEM CRED	IAI EQUIV	Dept	Number	Credit	GENERAL EDUCATION			COMMENT						
CRJ	111	Homeland Security Incident Command	3		No	Credit	0										
CRJ	112	Disaster & Blood-Borne Hazards	1		No	Credit	0										
CRJ	113	Emergency Preparedness & Response	3		No	Credit	0										
CRJ	114	Public Safety Leadership	3		No	Credit	0										
CRJ	201	Police in American Society	3		SOCI	Elective	3										
CRJ	202	Investigation and Criminal Evidence	3		No	Credit	0										
CRJ	206	Substantive Criminal Law	3		SOCI	Elective	3										
CRJ	207	Procedural Criminal Law	3		No	Credit	0										
CRJ	210	Special Topics in Criminal Justice	1			Elective					Evaluated individually						
CRJ	219	Contemporary Issues: Criminal Justice	2			Elective					Evaluated individually						
CRJ	233	Internship	3		No	Credit	0										
CRJ	237	Seminar	1		No	Credit	0										
CSC	140	Introduction to Computer Science	3		CSCE	160	3				Only one of CSC 140, CIS 160, 165 or 176 transfers						
CSC	240	Advanced Computer Science	3		CSCE	Elective	3										
CSC	280	Data Structures With Applications	4		CSCE	210	3										
EAS	120	Introduction to Earth Science	4	P1 905L	ENVI	141	4	SCI									
EAS	125	Introduction to Weather & Climate	4	P1 905L	SCIE	Elective	4	SCI									
EAS	130	Severe and Hazardous Weather	4	P1 905L	SCIE	Elective	4	SCI									
ECE	101	Introduction to Early Childhood	3		NCCC	Elective	3										
ECE	105	Health, Safety and Nutrition	3		KINE	Elective	3										
ECE	107	Infant and Toddler Development	3		NCCC	Elective	3										
ECE	109	Child, Family and Community	3		SOCI	Elective	3										
ECE	201	Math, Science and Social Studies	3		NCCC	Elective	3										
ECE	202	Growth and Development/Young Child	3		PSYC	Elective	3	SOC									
ECE	203	Administration of EC Programs	3		No	Credit	0										
ECE	205	Curriculum-Early Childhood Programs	3		NCCC	Elective	3										
ECE	211	Special Topics in Education	1-3			Elective					Evaluated individually						
ECE	233	ECE Practicum	2			Elective					Evaluated individually						
ECE	237	ECE Practicum Seminar	1		No	Credit											
ECE	243	Infant/Toddler Practicum	2		No	Credit											
ECE	247	Infant/Toddler Practicum Seminar	1		No	Credit											
ECE	253	ECE Director Practicum	3		No	Credit											
ECE	257	ECE Director Practicum Seminar	1			Elective											
ECO	100	Consumer Economics	3		SBEN	210	3	WEL			Only one of BUS 116 or BUS 135 or ECO 100 transfers						
ECO	101	Principles of Macro-Economics	3	S3 901	ECON	205	3	SOC									
ECO	102	Principles of Micro-Economics	3	S3 902	ECON	200	3	SOC									
ECO	103	International Economics	3		ECON	Elective	3	SOC			May not use to fulfill 300-level req in major/minor						
ECO	250	Comparative Economics	3		ECON	Elective	3	SOC									
EDU	100	Introduction to Education	3		EDUC	101	3										
EDU	102	Intro Paraprofessional Educator	3		No	Credit	0										
EDU	103	Observation/Clinical Experience	3		EDUC	Elective	1										
EDU	104	Intro. to the Foundations of Reading	3		EDUC	Elective	3										
EDU	105	Classroom Management	3		EDUC	Elective	3										
EDU	106	Language and Linguistics	3		EDUC	Elective	3										
EDU	108	Foundations of Bilingual Education	3		EDUC	Elective	3										
EDU	109	Cross-Cultural Studies	3		EDUC	Elective	3										
EDU	110	Technology for Educators	3		EDUC	235	3										
EDU	111	Intro to the Exceptional Child	3		EDUC	330	3				May not use to fulfill 300-level req in major/minor						
EDU	205	Literature for Children/Young Adults	3		ENGL	126	3				Only one of EDU 205 or LIT 205 transfers						
EDU	233	Paraprofessional Educator Internship	3		No	Credit	0										
EDU	237	Paraprofessional Educator Seminar	1		No	Credit	0										

**COURSE SUBSTITUTIONS FOR STUDENTS TRANSFERRING FROM MORAINE VALLEY COMMUNITY COLLEGE TO NORTH CENTRAL COLLEGE**

*Based on the 2022-2023 Moraine Valley Community College Catalog and the 2024-2025 North Central College Catalog*

<i>Moraine Valley Community College Courses</i>					<i>NCC Courses</i>			<i>NCC General Education and Comments</i>			
DEPT	NUM	COURSE TITLE	SEM CRED	IAI EQUIV	Dept	Number	Credit	GENERAL EDUCATION		COMMENT	
EDU	250	Comparative Education	3		EDUC	Elective	3				
EDU	263	Bilingual Practicum	3			Elective				Evaluated Individually	
EGN	110	Introduction to Engineering I	1		ENGR	100	1				
EGN	120	Introduction to Engineering II	2		ENGR	Elective					
EGN	150	Introduction to Design	3		ENGR	Elective	3				
EGN	201	Engineering Statics	3		PHYS	211	3				
EGN	202	Engineering Dynamics	3		PHYS	Elective	3				
EGN	252	Thermodynamics	3		PHYS	340	3			May not use to fulfill 300-level req in major/minor	
ELT		Electronics			No	Credit	0			No credit transfers from this department	
EMS		Emergency medical Services			No	Credit	0			No credit transfers from this department	
FIS		Fire Technology			No	Credit	0			No credit transfers from this department	
FRE	101	French I	4		FREN	101	4				
FRE	102	French II	4		FREN	102	4				
FRE	201	French III	4		FREN	201	4				
FRE	202	French IV	4	H1 900	FREN	202	4	HUM			
GEL	150	Physical Geology	4	P1 907L	SCIE	Elective	4	SCI			
GEL	151	Historical Geology	4		SCIE	Elective	4	SCI			
GEO	101	Cultural Geography	3	S4 900N	SOCI	Elective	3	SOC			
GEO	102	World Regional Geography	3	S4 900N	SOCI	Elective	3	SOC	HUM		
GEO	201	Economic Geography	3	S4 903N	ECON	Elective	3	SOC			
HAC		Heating & Air Conditioning			No	Credit	0			No credit transfers from this department	
HDV		Human Development			No	Credit	0			No credit transfers from this department	
HIS	101	Western Civilization I	3	S2 902	HIST	101	3	HUM			
HIS	102	Western Civilization II	3	S2 903	HIST	102	3	HUM	GLO		
HIS	105	The World Since 1945	3		HIST	Elective	3	SOC			
HIS	150	World History to 1500	3	S2 912N	HIST	Elective	3	SOC			
HIS	151	World History since 1500	3	S2 913N	HIST	155	3	SOC			
HIS	201	American History I	3	S2 900	HIST	Elective	3	SOC	GLO	POW	HIS 201 + HIS 207 = HIST 222
HIS	202	American History II	3	S2 901	HIST	Elective	3	SOC	GLO	POW	HIS 202 + HIS 207 = HIST 224
HIS	204	African-American History	3		HIST	112	3				
HIS	207	Illinois and Local History	3		HIST	Elective	3	HUM			
HIS	210	History of Asia	3	S2 908N	HIST	165	3	SOC			
HIS	211	American Military Experience	3		HIST	Elective	3				
HIS	215	History of Africa	3	S2 906N	HIST	185	3	SOC			
HIS	220	History of Latin America	3	S2 910N	HIST	175	3				
HIS	230	History of The Middle East	3		HIST	180	3	SOC	GLO		
HIS	250	Survey of British History I	3		HIST	Elective	3	SOC			
HIS	251	Survey of British History II	3		HIST	Elective	3	SOC			
HIS	254	European Cities	3		HIST	Elective	3				
HSC	110	Introduction to Health Professions	3		HTSC	Elective	3				
HSC		All other Health Science Courses			No	Credit	0				
HUM	101	Western Humanities I: Foundation	3	HF 902	NCCC	Elective	3	HUM			
HUM	102	Western Humanities II: Continuities	3	HF 903	NCCC	Elective	3	HUM			
HUM	115	World Mythology	3	H9 901	CLSS	Elective	3	HUM			
HUM	120	Women in the Humanities	3	HF 907D	GSST	Elective	3	HUM			
HUM	135	African & Middle Eastern Humanities	3	HF 904N	MENA	Elective	3	HUM			
HUM	140	Asian and Oceanic Humanities	3	HF 904N	NCCC	Elective	3	HUM			
HUM	145	Native American Humanities	3	HF 904N	NCCC	Elective	3	HUM			
HUM	155	LGBTQ Humanities	3	HD 907D	GSST	Elective	3	HUM			
HUM	249	British Culture and Society	3		NCCC	Elective	3	SOC			
HUM	251	Austrian Civilization	3		NCCC	Elective	3	HUM			



**COURSE SUBSTITUTIONS FOR STUDENTS TRANSFERRING FROM MORAINE VALLEY COMMUNITY COLLEGE TO NORTH CENTRAL COLLEGE**

*Based on the 2022-2023 Moraine Valley Community College Catalog and the 2024-2025 North Central College Catalog*

<i>Moraine Valley Community College Courses</i>					<i>NCC Courses</i>			<i>NCC General Education and Comments</i>				
DEPT	NUM	COURSE TITLE	SEM CRED	IAI EQUIV	Dept	Number	Credit	GENERAL EDUCATION			COMMENT	
IEL		Intensive English Language			No	Credit	0				No credit transfers from this department	
IMM		Mechanical/Fluid Power Maintenance			No	Credit	0				No credit transfers from this department	
IST		Integrated Systems Technology			No	Credit	0				No credit transfers from this department	
JRN	101	Introduction To Mass Communication	3		COMM	185	3	SOC	GLO	POW		
JRN	111	Media Writing I	3		MEDI	225	3					
JRN	112	Media Writing II	3		MEDI	325	3				May not use to fulfill 300-level req in major/minor	
LAN		Local Area Networks			No	Credit	0				No credit transfers from this department	
LIT	205	Literature for Children/Young Adults	3	H3 918	ENGL	126	3	HUM	ETH		Only one of EDU 205 or LIT 205 transfers	
LIT	213	American Literature I	3	H3 914	ENGL	Elective	3	HUM				
LIT	214	American Literature II	3	H3 915	ENGL	208	3	HUM				
LIT	215	Bible as Literature I	3	H5 901	RELG	110	3	HUM				
LIT	216	Bible as Literature II	3	H5 901	RELG	Elective	3	HUM				
LIT	217	Introduction to Poetry	3	H3 903	ENGL	Elective	3	HUM				
LIT	218	Introduction to Drama	3	H3 902	ENGL	Elective	3	HUM				
LIT	219	Women In Literature	3	H3 911D	ENGL	234	3	HUM				
LIT	220	Introduction to Fiction	3	H3 901	ENGL	Elective	3	HUM				
LIT	221	English Literature I	3	H3 912	ENGL	202	3	HUM				
LIT	222	English Literature II	3	H3 913	ENGL	206	3	HUM				
LIT	223	Western Literature I	3	H3 906	ENGL	Elective	3	HUM				
LIT	224	Western Literature II	3	H3 907	ENGL	Elective	3	HUM				
LIT	225	Shakespeare	3	H3 905	ENGL	302	3	HUM			May not use to fulfill 300-level req in major/minor	
LIT	226	Literature of Non-Western World	3	H3 908N	ENGL	Elective	3	HUM				
LIT	227	Literature as Film	3	HF 908	ENGL	Elective	3	HUM				
LIT	228	Latin American Literature	3	H3 908N	ENGL	Elective	3	HUM				
LIT	230	African-American Literature	3	H3 910D	ENGL	232	3	HUM				
LIT	299	Independent Study In Literature	3-4			Elective					Evaluated individually	
MAS		Massage Therapy			No	Credit	0				No credit transfers from this department	
MDT	160	Introduction to 3D Modeling	3		ARTD	Elective	3					
MDT	278	Design Visualization	3		MEDI	Elective	3					
MDT		All Other MDT Courses			No	Credit	0					
MOA		Medical Assistant			No	Credit	0				No credit transfers from this department	
MRT	110	Medical Terminology	3		HTSC	156	3					
MRT		All Other Medical Terminology/Health Info Tech			No	Credit	0				No credit transfers from this department	
MTH		All Courses Numbered below 100										
MTH	102	Mathematics for Paraprofessionals	3		No	Credit	0					
MTH	109	Math For Allied Health	2		No	Credit	0					
MTH	120	General Education Mathematics	3	M1 904	MATH	120	3	QUA				
MTH	121	Math For Teachers I	3		MATH	107	3					
MTH	122	Math For Teachers II	3	M1 903	MATH	108	3	QUA				
MTH	133	Math for Industry	2		No	Credit	0					
MTH	139	Probability And Statistics	4	M1 902	PSYC	250	4	QUA			Only one of MATH 139 or MATH 212 transfers	
MTH	141	College Algebra (Functions)	4		MATH	Elective	4					
MTH	142	Trigonometric Functions	2		MATH	Elective	2				MTH 141 + MTH 142 = MATH 140	
MTH	143	Finite Mathematics	4	M1 906	MATH	130	4	QUA				
MTH	145	Calculus for Business and Social Science	4	M1 900	MATH	Elective	4	QUA				
MTH	150	Calculus I/Analytic Geometry	5	M1 900	MATH	151	5	QUA				
MTH	151	Calculus II/Analytic Geometry	5	M1 900	MATH	152	5	QUA				
MTH	152	Calculus III/Analytic Geometry	4	M1 900	MATH	253	4	QUA				
MTH	201	Differential Equations	3		MATH	315	3				May not use to fulfill 300-level req in major/minor	
MTH	210	Linear Algebra	3		MATH	300	3				May not use to fulfill 300-level req in major/minor	
MTH	212	Statistics for Business	4	M1 902	BUSN	265	4	QUA			Only one of MATH 139 or MATH 212 transfers	

**COURSE SUBSTITUTIONS FOR STUDENTS TRANSFERRING FROM MORAINE VALLEY COMMUNITY COLLEGE TO NORTH CENTRAL COLLEGE**

*Based on the 2022-2023 Moraine Valley Community College Catalog and the 2024-2025 North Central College Catalog*

<i>Moraine Valley Community College Courses</i>					<i>NCC Courses</i>			<i>NCC General Education and Comments</i>			
DEPT	NUM	COURSE TITLE	SEM CRED	IAI EQUIV	Dept	Number	Credit	GENERAL EDUCATION			COMMENT
MTH	215	Discrete Mathematics	3		CSCE	230	4	QUA			
MUS	103	Basic Musicianship	3		MUSI	Elective	3				
MUS	104	Music Theory I	3		MUSI	101	3				
MUS	105	Music Theory II	3		MUSI	102	3				
MUS	106	Introduction To American Music	3	F1 904	MUSI	Elective	3	ART			
MUS	107	Music Appreciation	3	F1 900	MUSI	150	3	ART			
MUS	109	Percussion Ensemble I	1		MUAL	160	1				
MUS	110	Percussion Ensemble II	1		MUAL	160	1				
MUS	113	Music Technology I	3		MUSI	285	3				
MUS	115	Class Piano I	1		MUAL	110	1				
MUS	116	Class Piano II	1		MUAL	110	1				
MUS	117	Class Voice	1		MUAL	100	1				
MUS	118	Keyboard Skills I	1		MUAL	119	1				
MUS	119	Class Guitar	1		MUAL	185	1				
MUS	120	Keyboard Skills II	1		MUAL	119	1				
MUS	121	Applied Voice Non-major I	1		MUAL	100	1				
MUS	122	Applied Voice Non-major II	1		MUAL	100	1				
MUS	125	Applied Voice Major I	2		MUAL	100	2				
MUS	126	Applied Voice Major II	2		MUAL	100	2				
MUS	129	Applied Strings Non-major I	1		MUAL	189	1				
MUS	130	Applied Strings Non-major II	1		MUAL	189	1				
MUS	131	Applied Piano Non-major I	1		MUAL	110	1				
MUS	132	Applied Piano Non-major II	1		MUAL	110	1				
MUS	135	Applied Piano Major I	2		MUAL	100	2				
MUS	136	Applied Piano Major II	2		MUAL	100	2				
MUS	139	Applied Strings Major I	2		MUAL	189	2				
MUS	140	Applied Strings Major II	2		MUAL	189	2				
MUS	141	Chamber Singers I	1		MUEN	104	1				
MUS	142	Chamber Singers II	1		MUEN	104	1				
MUS	145	Chorale I	1		MUEN	101	1				
MUS	146	Chorale II	1		MUEN	101	1				
MUS	149	Flute Choir I	1		MUEN	Ensemble	1				
MUS	151	Jazz Ensemble I	1		MUEN	120	1				
MUS	152	Jazz Ensemble II	1		MUEN	120	1				
MUS	159	Flute Choir II	1		MUEN	Ensemble	1				
MUS	161	Instrumental Chamber Ensemble I	1		MUEN	190	1				
MUS	162	Instrumental Chamber Ensemble II	1		MUEN	190	1				
MUS	169	Applied Percussion Non-major I	1		MUAL	169	1				
MUS	170	Applied Percussion Non-major II	1		MUAL	169	1				
MUS	171	Orchestra I	1		MUEN	114	1				
MUS	172	Orchestra II	1		MUEN	114	1				
MUS	173	Orchestra III	1		MUEN	114	1				
MUS	174	Orchestra IV	1		MUEN	114	1				
MUS	175	Concert Band I	1		MUEN	113	1				
MUS	176	Concert Band II	1		MUEN	113	1				
MUS	179	Applied Percussion Major I	2		MUEN	160	2				
MUS	180	Applied Percussion Major II	2		MUEN	160	2				
MUS	181	Applied Guitar Non-major I	1		MUAL	185	1				
MUS	182	Applied Guitar Non-major II	1		MUAL	185	1				
MUS	185	Applied Guitar Major I	2		MUAL	185	2				
MUS	186	Applied Guitar Major II	2		MUAL	185	2				

**COURSE SUBSTITUTIONS FOR STUDENTS TRANSFERRING FROM MORAINE VALLEY COMMUNITY COLLEGE TO NORTH CENTRAL COLLEGE**

*Based on the 2022-2023 Moraine Valley Community College Catalog and the 2024-2025 North Central College Catalog*

<i>Moraine Valley Community College Courses</i>					<i>NCC Courses</i>			<i>NCC General Education and Comments</i>			
DEPT	NUM	COURSE TITLE	SEM CRED	IAI EQUIV	Dept	Number	Credit	GENERAL EDUCATION		COMMENT	
MUS	189	Aural Skills I	1		MUSI	Elective	1				
MUS	190	Aural Skills II	1		MUSI	108	1				
MUS	191	Applied Brasswind Non-major I	1		MUAL	Elective	1				
MUS	192	Applied Brasswind Non-major II	1		MUAL	Elective	1				
MUS	193	Applied Brasswind Major I	2		MUAL	Elective	2				
MUS	194	Applied Brasswind Major II	2		MUAL	Elective	2				
MUS	195	Applied Woodwind Non-major I	1		MUAL	129	1				
MUS	196	Applied Woodwind Non-major II	1		MUAL	129	1				
MUS	197	Applied Woodwind Major I	2		MUAL	129	2				
MUS	198	Applied Woodwind Major II	2		MUAL	129	2				
MUS	204	Music Theory III	3		MUSI	201	3				
MUS	205	Music Theory IV	3		MUSI	202	3				
MUS	206	Music History and Literature I	3		MUSI	Elective	3	HUM		MUS 206 + MUS 207 = MUSI 258	
MUS	207	Music History and Literature II	3		MUSI	Elective	3	HUM		MUS 206 + MUS 207 = MUSI 258	
MUS	209	Percussion Ensemble III	1		MUEN	Ensemble	0				
MUS	210	Percussion Ensemble IV	1		MUEN	Ensemble	1				
MUS	213	Music Technology II	3		MUSI	Elective	3				
MUS	218	Keyboard Skills III	1		MUAL	319	1			May not use to fulfill 300-level req in major/minor	
MUS	220	Keyboard Skills IV	1		MUAL	319	1			May not use to fulfill 300-level req in major/minor	
MUS	221	Applied Voice Non-major III	1		MUAL	Elective	1				
MUS	222	Applied Voice Non-major IV	1		MUAL	Elective	1				
MUS	225	Applied Voice Major III	2		MUAL	300	2			May not use to fulfill 300-level req in major/minor	
MUS	226	Applied Voice Major IV	2		MUAL	300	2			May not use to fulfill 300-level req in major/minor	
MUS	229	Applied Strings Non-major III	1		MUAL	Elective	1				
MUS	230	Applied Strings Non-major IV	1		MUAL	Elective	1				
MUS	231	Applied Piano Non-major III	1		MUAL	Elective	1				
MUS	232	Applied Piano Non-major IV	1		MUAL	Elective	1				
MUS	235	Applied Piano Major III	2		MUAL	310	2			May not use to fulfill 300-level req in major/minor	
MUS	236	Applied Piano Major IV	2		MUAL	310	2			May not use to fulfill 300-level req in major/minor	
MUS	239	Applied Strings Major III	2		MUAL	389	2			May not use to fulfill 300-level req in major/minor	
MUS	240	Applied Strings Major IV	2		MUAL	389	2			May not use to fulfill 300-level req in major/minor	
MUS	241	Chamber Singers III	1		MUEN	Ensemble	1				
MUS	242	Chamber Singers IV	1		MUEN	Ensemble	1				
MUS	245	Chorale III	1		MUEN	Ensemble	1				
MUS	246	Chorale IV	1		MUEN	Ensemble	1				
MUS	249	Flute Choir III	1		MUEN	Ensemble	1				
MUS	251	Jazz Ensemble III	1		MUEN	120	1				
MUS	252	Jazz Ensemble IV	1		MUEN	120	1				
MUS	259	Flute Choir IV	1		MUEN	Ensemble	1				
MUS	261	Instrumental Chamber Ensemble III	1		MUEN	Ensemble	1				
MUS	262	Instrumental Chamber Ensemble IV	1		MUEN	Ensemble	1				
MUS	269	Applied Percussion Non-major III	1		MUAL	Elective	1				
MUS	270	Applied Percussion Non-major IV	1		MUAL	Elective	1				
MUS	275	Concert Band III	1		MUSI	113	1				
MUS	276	Concert Band IV	1		MUSI	113	1				
MUS	279	Applied Percussion Major III	2		MUAL	369	2			May not use to fulfill 300-level req in major/minor	
MUS	280	Applied Percussion Major IV	2		MUAL	369	2			May not use to fulfill 300-level req in major/minor	
MUS	281	Applied Guitar Non-major III	1		MUAL	Elective	1				
MUS	282	Applied Guitar Non-major IV	1		MUAL	Elective	1				
MUS	285	Applied Guitar Major III	2		MUAL	385	2			May not use to fulfill 300-level req in major/minor	
MUS	286	Applied Guitar Major IV	2		MUAL	385	2			May not use to fulfill 300-level req in major/minor	

**COURSE SUBSTITUTIONS FOR STUDENTS TRANSFERRING FROM MORAINE VALLEY COMMUNITY COLLEGE TO NORTH CENTRAL COLLEGE**

*Based on the 2022-2023 Moraine Valley Community College Catalog and the 2024-2025 North Central College Catalog*

<i>Moraine Valley Community College Courses</i>					<i>NCC Courses</i>			<i>NCC General Education and Comments</i>			
DEPT	NUM	COURSE TITLE	SEM CRED	IAI EQUIV	Dept	Number	Credit	GENERAL EDUCATION		COMMENT	
MUS	289	Aural Skills III	1		MUSI	Elective	1				
MUS	290	Aural Skills IV	1		MUSI	Elective	1				
MUS	291	Applied Brasswind Non-major III	1		MUAL	Elective	1				
MUS	292	Applied Brasswind Non-major IV	1		MUAL	Elective	1				
MUS	293	Applied Brasswind Major III	2		MUAL	Elective	2				
MUS	294	Applied Brasswind Major IV	2		MUAL	Elective	2				
MUS	295	Applied Woodwind Non-major III	1		MUAL	Elective	1				
MUS	296	Applied Woodwind Non-major IV	1		MUAL	Elective	1				
MUS	297	Applied Woodwind Major III	2		MUAL	329	2			May not use to fulfill 300-level req in major/minor	
MUS	298	Applied Woodwind Major IV	2		MUAL	329	2			May not use to fulfill 300-level req in major/minor	
NAT	111	Environmental Science I	4	L1 905L	BIOL	106	4	SCI			
NAT	112	Environmental Science II	4	L1 905L	SCIE	Elective	4	SCI			
NAT	201	Environmental Problems	4		No	Credit	0				
NUR		Nursing			No	Credit	0			No credit transfers from this department	
OFT		Office Technology			No	Credit	0			No credit transfers from this department	
PEH	101	Adaptive Physical Education	1		KINE	Activity	1			A maximum 8 hours of KINE activity transfer	
PEH	105	Physical Fitness	1		KINE	Activity	1			A maximum 8 hours of KINE activity transfer	
PEH	107	Introduction to Group Fitness	1		KINE	Activity	1			A maximum 8 hours of KINE activity transfer	
PEH	108	Weightlifting	1		KINE	Activity	1			A maximum 8 hours of KINE activity transfer	
PEH	110	Ballet I	1		THEA	Elective	1				
PEH	111	Ballet II	1		THEA	224	1				
PEH	112	Jazz Dance I	1		THEA	Elective	1				
PEH	113	Jazz Dance II	1		THEA	222	1				
PEH	117	Modern Creative Dance I	1		THEA	Elective	1				
PEH	118	Modern Creative Dance II	1		THEA	225	1				
PEH	120	Introduction to Body/Mind Fitness	1		THEA	103	1				
PEH	122	Yoga Basics and Beyond	1		KINE	Activity	1			A maximum 8 hours of KINE activity transfer	
PEH	130	Basketball I	1		KINE	Activity	1			A maximum 8 hours of KINE activity transfer	
PEH	131	Volleyball	1		KINE	105	1			A maximum 8 hours of KINE activity transfer	
PEH	132	Fundamentals of Football	2		KINE	Activity	2			A maximum 8 hours of KINE activity transfer	
PEH	133	Basketball II	1		KINE	101	1			A maximum 8 hours of KINE activity transfer	
PEH	134	Baseball	2		KINE	Activity	2			A maximum 8 hours of KINE activity transfer	
PEH	138	Cardiovascular Conditioning	1		KINE	Activity	1			A maximum 8 hours of KINE activity transfer	
PEH	140	Weight Training	1		KINE	Activity	1			A maximum 8 hours of KINE activity transfer	
PEH	141	Classic Cardio Fitness	1		KINE	Activity	1			A maximum 8 hours of KINE activity transfer	
PEH	142	Cardio Cross Training	1		KINE	Activity	1			A maximum 8 hours of KINE activity transfer	
PEH	143	Circuit Training Fitness	1		KINE	Activity	1			A maximum 8 hours of KINE activity transfer	
PEH	144	Dance Cardio Fitness	1		KINE	Activity	1			A maximum 8 hours of KINE activity transfer	
PEH	150	Introduction to Physical Education	3		KINE	Elective	3				
PEH	151	Lifetime Activities - Net Games	2		KINE	Elective	2				
PEH	152	Lifetime Activities - Conditioning	2		KINE	Elective	2				
PEH	153	Lifetime Activities - Archery and Golf	2		KINE	Elective	2				
PEH	154	Team Sports	2		KINE	Elective	2				
PEH	160	Fundamentals of Human Movement	3		KINE	247	3				
PEH	161	Fitness Methodology	4		KINE	Elective	4				
PEH	162	Fitness Testing	3		KINE	Elective	3				
PEH	163	Fitness Programming	3		KINE	Elective	3				
PEH	164	Exercise for Special Populations	3		KINE	Elective	3				
PEH	165	Fitness Business Skills and Promotion	3		No	Credit	0				
PEH	170	First Aid	3		HTSC	100	3				
PEH	171	A Healthy Lifestyle and You	3		KINE	Elective	3				

**COURSE SUBSTITUTIONS FOR STUDENTS TRANSFERRING FROM MORAINE VALLEY COMMUNITY COLLEGE TO NORTH CENTRAL COLLEGE**

*Based on the 2022-2023 Moraine Valley Community College Catalog and the 2024-2025 North Central College Catalog*

<i>Moraine Valley Community College Courses</i>					<i>NCC Courses</i>			<i>NCC General Education and Comments</i>			
DEPT	NUM	COURSE TITLE	SEM CRED	IAI EQUIV	Dept	Number	Credit	GENERAL EDUCATION			COMMENT
PEH	172	Nutrition For Today	3		KINE	Elective	3				
PEH	175	Small Group Fitness Training	2		KINE	Elective	2				
PEH	181	Fundamentals Rhythmical Movement	2		KINE	Elective	2				
PEH	190	Outdoor Recreation and Nature Study	3		KINE	119	3				
PHB		Phlebotomy			No	Credit	0				No credit transfers from this department
PHI	101	Introduction To Philosophy	3	H4 900	PHIL	100	3	HUM	ETH		
PHI	110	Intro to Formal Logic	3		PHIL	230	3	QUA			
PHI	111	Critical Thinking	3	H4 906	PHIL	Elective	3	HUM			
PHI	115	Approaches to Truth	3		PHIL	Elective	3				
PHI	120	World Religions	3	H5 904N	RELG	100	3	HUM	GLO		
PHI	125	Ethics	3	H4 904	PHIL	110	3	HUM	ETH		
PHI	200	Philosophy of Religion	3	H4 905	PHIL	360	3	HUM	ETH		May not use to fulfill 300-level req in major/minor
PHI	210	Philosophy: Ancient to Enlightenment	3	H4 901	PHIL	260	3	HUM	ETH	GLO	
PHI	211	Philosophy: Enlightenment to Present	3	H4 902	PHIL	265	3	HUM	ETH		
PHI	225	Bioethics	3		PHIL	213	3	HUM	ETH		
PHI	226	Business Ethics	3		PHIL	210	3	HUM	ETH		Only one of BUS 226 or PHI 226 transfers
PHS	101	Physical Science	4	P9 900L	SCIE	Elective	4	SCI			
PHS	103	Descriptive Astronomy	4	P1 906L	PHYS	110	4	SCI			
PHS	105	Astronomy - Cosmos	3		PHYS	Elective	3				
PHY	106	Fundamentals of Physics	3	P1 900	PHYS	Elective	3	SCI			
PHY	107	Fundamentals of Physics Lab	1	P1 900L	PHYS	Elective	1	SCI			
PHY	110	Mechanical Universe I	3	P1 900	PHYS	131	3	SCI			Only one of PHY 110 + PHY 111 or PHY 150 transfers
PHY	111	Mechanical Universe I Lab	1	P1 900L	PHYS	131L	1	SCI			Must take 110; Only 1 of PHY110+111 or 150 transfers
PHY	112	Mechanical Universe II	3		PHYS	132	3				Only one of PHY 112 + PHY 113 or PHY 151 transfers
PHY	113	Mechanical Universe II Lab	1		PHYS	132L	1				Must take 112; Only 1 of PHY112+113 or 151 transfers
PHY	150	Mechanics, Heat & Sound	4	P1 900L	PHYS	131	4	SCI			Only one of PHY 110 + PHY 111 or PHY 150 transfers
PHY	151	Electricity, Magnetism & Light	4		PHYS	132	4				Only one of PHY 112 + PHY 113 or PHY 151 transfers
PHY	203	Mechanics	4	P2 900L	PHYS	161	4	SCI			
PHY	204	Heat, Electricity and Magnetism	4		PHYS	Elective	4				PHY 204 + PHY 205 = PHYS 162
PHY	205	Waves and Modern Physics	4		PHYS	Elective	4				PHY 204 + PHY 205 = PHYS 162
PLS		Paralegal Studies			No	Credit	0				No credit transfers from this department
PSC	103	Introduction to Political Science	3	S5 903	POLS	Elective	3	SOC			
PSC	110	American National Government	3	S5 900	POLS	101	3	SOC	POW		
PSC	115	State and Local Government	3	S5 902	POLS	Elective	3	SOC			
PSC	210	International Relations	3	S5 904	POLS	102	3	SOC	GLO		
PSC	212	Latin American Politics	3		POLS	Elective	3	SOC			
PSC	215	Comparative Government	3	S5 905	POLS	221	3	SOC	GLO		
PSC	225	Non-Western Comparative Politics	3	S5 906N	POLS	Elective	3	SOC			
PSC	245	Politics of the Middle East	3	S5 906N	POLS	Elective	3	SOC			
PSC	280	Introduction to Political Philosophy	3		POLS	Elective	3	SOC			
PSG		Polysomnography			No	Credit	0				No credit transfers from this department
PSY	101	Introduction to Psychology	3	S6 900	PSYC	100	3	SOC			
PSY	104	Life-Span Developmental Psychology	3	S6 902	PSYC	235	3	SOC			
PSY	105	Child Psychology	3	S6 903	PSYC	210	3	SOC			
PSY	106	Adolescent Psychology	3	S6 904	PSYC	220	3	SOC			
PSY	110	Group Dynamics	1		PSYC	Elective	1	SOC			
PSY	199	Special Topics in Psychology	3			Elective					Evaluated individually
PSY	201	Industrial/Organizational Psychology	3		PSYC	270	3				
PSY	202	Social Psychology	3	S8 900	PSYC	240	3	SOC			
PSY	205	Abnormal Psychology	3		PSYC	324	3				May not use to fulfill 300-level req in major/minor
PSY	210	Adult Psychology	3	S6 905	PSYC	230	3	SOC			

**COURSE SUBSTITUTIONS FOR STUDENTS TRANSFERRING FROM MORAINE VALLEY COMMUNITY COLLEGE TO NORTH CENTRAL COLLEGE**

*Based on the 2022-2023 Moraine Valley Community College Catalog and the 2024-2025 North Central College Catalog*

<i>Moraine Valley Community College Courses</i>					<i>NCC Courses</i>			<i>NCC General Education and Comments</i>				
DEPT	NUM	COURSE TITLE	SEM CRED	IAI EQUIV	Dept	Number	Credit	GENERAL EDUCATION			COMMENT	
PSY	211	Human Sexuality	3		PSYC	Elective	3					
PSY	212	Theories of Personality	3		PSYC	320	3				May not use to fulfill 300-level req in major/minor	
PSY	215	Educational Psychology	3		PSYC	205	3					
PSY	220	Psychology of Women	3		PSYCC	Elective	3	SOC				
RAD		Radiologic Technology			No	Credit	0				No credit transfers from this department	
RDG		Reading			No	Credit	0				No credit transfers from this department	
REC	180	Perceptual Motor Development	3		KINE	Elective	3					
REC	182	Recreation for Special Populations	3		KINE	Elective	3					
REC	201	Applied Leadership Essentials	3		KINE	Elective	3					
REC		All Other Recreation Management Courses			No	Credit	0				No credit transfers from this department	
RES		Respiratory Therapy Technology			No	Credit	0				No credit transfers from this department	
RTM		Restaurant & Hotel Management			No	Credit	0				No credit transfers from this department	
SLP		Security and Loss Prevention			No	Credit	0				No credit transfers from this department	
SOC	101	General Sociology	3	S7 900	SOCI	100	3	SOC	POW			
SOC	102	Marriage & Family	3	S7 902	SOCI	342	3	SOC	GLO		May not use to fulfill 300-level req in major/minor	
SOC	103	Sociology of Poverty	3		SOCI	Elective	3					
SOC	201	Sociology of Health	3		SOCI	Elective	3					
SOC	202	Aging In Contemporary Society	3		SOCI	Elective	3					
SOC	204	Soc of Contemporary Social Problems	3	S7 901	SOCI	Elective	3	SOC				
SOC	210	Minority Groups	3	S7 903D	SOCI	211	3	SOC	POW			
SOC	215	Sociology of Sex and Gender	3	S7 904D	GSST	100	3	SOC	POW			
SPA	101	Spanish I	4		SPAN	101	4					
SPA	102	Spanish II	4		SPAN	102	4					
SPA	105	Career Spanish for Business	3		No	Credit	0					
SPA	106	Career Spanish for Business II	3		No	Credit	0					
SPA	115	Career Spanish for Health Care I	3		No	Credit	0					
SPA	116	Career Spanish for Health Care II	3		No	Credit	0					
SPA	125	Career Spanish for Law Enforcement I	3		No	Credit	0					
SPA	126	Career Spanish for Law Enforcement II	3		No	Credit	0					
SPA	201	Spanish III	4		SPAN	201	4					
SPA	202	Spanish IV	4	H1 900	SPAN	202	4	HUM				
SPA	205	Conversational Spanish	4		SPAN	Elective	4					
SPA	210	Spanish Culture and Civilization	3		SPAN	327	3				May not use to fulfill 300-level req in major/minor	
SPA	212	Latin America Culture and Civilization	3		SPAN	337	3	GLO			May not use to fulfill 300-level req in major/minor	
SPA	213	Intro To Hispanic Literature	3	H3 916	SPAN	Elective	3	HUM				
SSC	100	Contemporary Society	3		SOCI	Elective	3					
SSC	101	Social Science I	3	S9 900	NCCC	Elective	3	SOC				
SSC	102	Social Science II	3		NCCC	Elective	3					
SSC	299	Topics In Social Science	3			Elective					Evaluated individually	
SWK	101	Introduction To Social Work	3		No	Credit	0					
TDL		Transportation/Distribution/Logistics			No	Credit	0				No credit transfers from this department	
THE	105	Theater Appreciation	3	F1 907	THEA	102	3	ART				
THE	107	Film Appreciation	3	F2 908	FILM	100	3	ART				
THE	108	Screenwriting	3		MEDI	270	3					
THE	110	History of the Theatre	3	F1 908	THEA	304	3				May not use to fulfill 300-level req in major/minor	
THE	111	History of Film	3	F2 909	FILM	Elective	3	ART				
THE	114	Oral Interpretation of Literature	3		COMM	Elective	3					
THE	115	Acting I	3		THEA	101	3	ART				
THE	116	Acting II	3		THEA	150	3					
THE	125	Stagecraft	3		THEA	141	3					
THE	131	Theater Practicum: Acting I	1		THEA	115	1				A maximum 6 hours of THEA 115 transfer	

**COURSE SUBSTITUTIONS FOR STUDENTS TRANSFERRING FROM MORAIN VALLEY COMMUNITY COLLEGE TO NORTH CENTRAL COLLEGE**

*Based on the 2022-2023 Moraine Valley Community College Catalog and the 2024-2025 North Central College Catalog*

<i>Moraine Valley Community College Courses</i>					<i>NCC Courses</i>			<i>NCC General Education and Comments</i>			
DEPT	NUM	COURSE TITLE	SEM CRED	IAI EQUIV	Dept	Number	Credit	GENERAL EDUCATION			COMMENT
THE	132	Theater Practicum: Acting II	2		THEA	115	2				A maximum 6 hours of THEA 115 transfer
THE	133	Theater Practicum: Acting III	3		THEA	115	3				A maximum 6 hours of THEA 115 transfer
THE	150	Creative Dramatics	3		THEA	Elective	3				
THR		Recreation Therapy			No	Credit	0				No credit transfers from this department
WLD		Welding			No	Credit	0				No credit transfers from this department