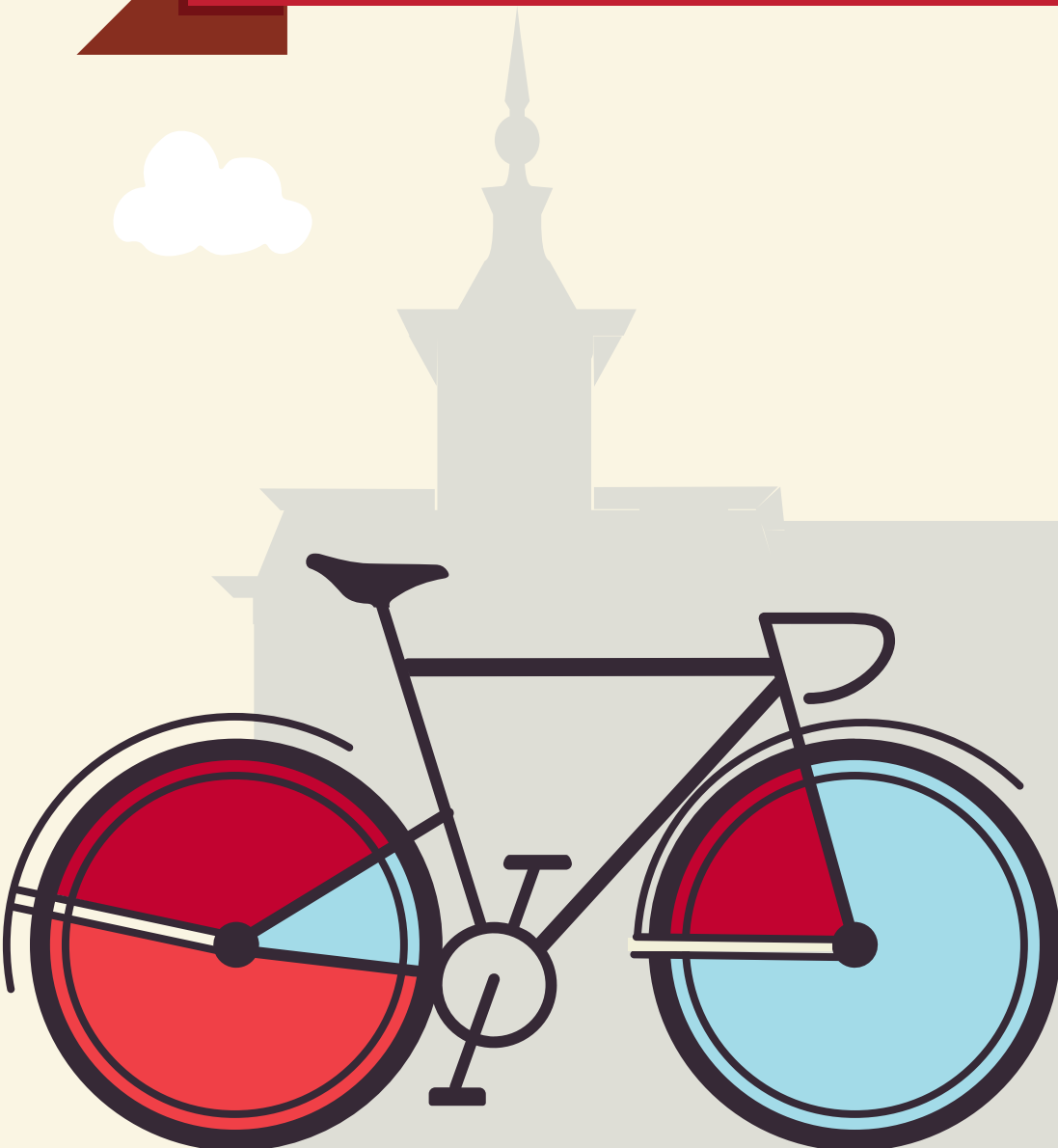


YOUR GUIDE TO TRANSFERRING TO NORTH CENTRAL COLLEGE

SOUTH SUBURBAN COLLEGE





This guide is based on the 2024-2025 South Suburban College catalog, and the 2024-2025 North Central College catalog. North Central College reserves the right to alter any information listed in this guide, including the transferability of courses, without notice or obligation. For assistance with this guide, please call the Office of Admission at (630) 637-5800 or email at admissions@noctrl.edu.

How to use this guide: This course substitution guide is designed to help you select courses at South Suburban College if you plan to transfer to North Central College. Working with your SSC advisor and NCC transfer admission counselor, refer to this guide to determine courses that meet North Central College requirements in our general education curriculum, academic major and minor requirements, and electives. Your NCC counselor can also provide a major planning worksheet. Listed below is a sample from this guide:

SSC Course Numbers, Titles, Credit					NCC Equivalent Course Numbers & Credit			NCC General Education Codes			Important Information about courses
DEPT	NUM	COURSE TITLE	CREDIT	IAI EQUIV	DEPT	NUM	CREDIT	GENERAL EDUCATION			COMMENTS
ANT	101	Anthropology	3	S1 901N	ANTH	Elective	3	SOC			
ART	101	Drawing I	3		ARTD	120	3	ART			

The Cardinal Directions general education curriculum at North Central College is as follows, along with the general education codes you will find in this guide. Please note the column to the far right which indicates which of these requirements may be waived (or required) based on the level of education you achieve prior to transferring. For additional details, please reference the NC catalog: <http://catalog.noctrl.edu/content.php?catoid=26&navoid=2582>.

CARDINAL DIRECTIONS CURRICULUM MAP

Requirement	General Education Code	Credit	Comments
Composition	COMP	4 credits	Met with A.A. or A.S. degree
Writing Intensive	WRI	4 credits	Met with A.A. or A.S. degree
Public Speaking	COM	4 credits	Met with A.A. or A.S. degree
Arts	ART	4 credits	Met with A.A. or A.S. degree
Humanities	HUM	4 credits	Met with A.A. or A.S. degree
Social Science	SOC	4 credits	Met with A.A. or A.S. degree
Science	SCI	4 credits	Met with A.A. or A.S. degree
Quantitative Analysis	QUA	4 credits	Met with A.A. or A.S. degree
Power Structures or Global Understanding	POW or GLO	4 credits	Met with A.A. or A.S. degree GLO may be met with Study Abroad at NCC
Ethical Dimensions	ETH	4 credits	Met with A.A. or A.S. degree
Well Being	WEL	2 credits	Met with A.A. or A.S. degree
Experiential (One of the following):	-Community Engaged Learning -Study Away/Study Abroad -Student Research -CARD 400 – Senior Seminar: Liberal Arts and Problems of Today	2 credits	Met with A.A. or A.S. degree
Career Readiness: Preparation and Experiential*	CARD 250 – Career Preparation CARD 300 – Career Experiential	4 credits total	*Must be taken at NC

- *An equivalent 3-credit transfer course may be used to fulfill a General Education requirement.
- One course may fulfill multiple requirements.
- College Transfer Credits are courses taken at a college or university after graduating high school and not earned through AP, IB, or CLEP.
- Only 64 semester hours (96 quarter hours) may transfer from a 2-yr college. Developmental courses (under 100-level) do not transfer.
- Requirements met through an eligible A.A. or A.S. degree may also be met with an eligible A.A.S. degree only if applied to the B.A.S. degree.
- Students with less than 28 transferable hours will need to complete CARD 110, a 1-credit transition course.

COURSE SUBSTITUTIONS FOR STUDENTS TRANSFERRING FROM SOUTH SUBURBAN COLLEGE TO NORTH CENTRAL COLLEGE

Based on the 2022-2024 South Suburban College Catalog and the 2024-2025 North Central College Catalog

South Suburban College Courses				NCC Courses			NCC General Education and Comments			
DEPT	NUM	COURSE TITLE	SEM CRED	IAI EQUIV	Dept	Number	Credit	GENERAL EDUCATION		COMMENT
ACC	100	Personal Income Tax	3		No	Credit	0			
ACC	120	Financial Accounting	4		ACCT	201	4			
ACC	121	Managerial Accounting	3		ACCT	202	4			
ACC	130	Computerized Accounting (Quickbooks)	3		No	Credit	0			
ACC	200	Cost Accounting	3		ACCT	307	3			May not use to fulfill 300-level req in major/minor
ACC	230	Information Management	3		BUSN	Elective	3			
ACC	250	Accounting Internship	3			Elective				Evaluated individually
ACC	260	Intermediate Accounting I	3		ACCT	317	3			May not use to fulfill 300-level req in major/minor
ACC	261	Intermediate Accounting II	3		ACCT	318	3			May not use to fulfill 300-level req in major/minor
ACC	290	Federal Taxes	3		ACCT	Elective	3			
ACC	291	Advanced Federal and Illinois Taxes	3		ACCT	Elective	3			
ADN		Nursing-Associate Degree			No	Credit	0			No credit transfers from this department
AET		Applied Engineering Technology			No	Credit	0			No credit transfers from this department
ANT	101	Anthropology	3	S1 901N	ANTH	Elective	3	SOC		
ART	101	Drawing I	3		ARTD	120	3	ART		
ART	102	Drawing II	3		ARTD	220	3			
ART	105	Art History Survey, Ancient World	3	F2 901	ARTH	100	3	ART	GLO	
ART	106	Art History Survey, Renaissance Through Modern	3	F2 902	ARTH	102	3	ART	GLO	
ART	107	Art Appreciation	3	F2 900	ARTD	100	3	ART		
ART	109	Ceramics I	3		ARTD	150	3	ART		
ART	110	Metals and Jewelry I	3		ARTD	Elective	3			
ART	111	Two Dimensional Design	3		ARTD	107	3			
ART	112	Three-Dimensional Design	3		ARTD	160	3			
ART	113	Color Theory and Practice	3		ARTD	Elective	3			
ART	130	Computer Art I (Adobe Photoshop, Illustrator)	3		ARTD	105	3			
ART	139	History of Photography	3	F2 904	ARTD	Elective	3	ART		
ART	140	Photography I Digital	3		ARTD	Elective	3			
ART	141	Photography II Digital	3		ARTD	275	3			
ART	201	Painting	3		ARTD	130	3	ART		
ART	202	Painting II	3		ARTD	230	3			
ART	203	Life Drawing I	3		ARTD	225	3			
ART	204	Life Drawing II	3		ARTD	Elective	3			
ART	205	Sculpture I	3		ARTD	260	3	ART		
ART	206	Printmaking I	3		ARTD	210	3			
ART	209	Ceramics II	3		ARTD	250	3			
ART	210	Metals and Jewelry II	3		ARTD	Elective	3			
ART	211	Painting With New Media	3		ARTD	Elective	3			
ART	212	Painting Studio	3		ARTD	330	3			May not use to fulfill 300-level req in major/minor
ART	213	Watercolor I	3		ARTD	135	3	HUM		
ART	215	Sculpture II	3		ARTD	Elective	3			
ART	216	Printmaking II	3		ARTD	310	3			May not use to fulfill 300-level req in major/minor
ART	219	Non-Western Art	3	F2 903N	ARTH	264	3	ART		
ART	221	The History of Art in Architecture	3		ARTH	Elective	3	ART		
ART	223	Watercolor II	3		ARTD	Elective	3			
ART	230	Web Design	3		ARTD	245	3			
ART	241	Art Internship	2			Elective				Evaluated individually
ART	251	Graphic Design I	3		ARTD	242	3			
ART	252	Graphic Design II	3		ARTD	Elective	3			
ART	260	Computer Assisted Illustration	3		No	Credit	0			
ART	265	Computer Art II (Photoshop)	3		ARTD	Elective	3			
ART	270	Computer Animation (Flash)	3		ARTD	207	3			

COURSE SUBSTITUTIONS FOR STUDENTS TRANSFERRING FROM SOUTH SUBURBAN COLLEGE TO NORTH CENTRAL COLLEGE

Based on the 2022-2024 South Suburban College Catalog and the 2024-2025 North Central College Catalog

South Suburban College Courses				NCC Courses			NCC General Education and Comments				
DEPT	NUM	COURSE TITLE	SEM CRED	IAI EQUIV	Dept	Number	Credit	GENERAL EDUCATION			COMMENT
AST	101	Introduction to Astronomy	4	P1 906L	PHYS	110	4	SCI			
BCD		Building Code Enforcement			No	Credit	0				No credit transfers from this department
BIO	101	Concepts of Biology	3	L1 900	BIOL	Elective	3	SCI			Only one of BIO 101 or BIO 102 transfers
BIO	102	Introductory Biology	4	L1 900L	BIOL	Elective	4	SCI			Only one of BIO 101 or BIO 102 transfers
BIO	103	Environmental Biology	4	L1 905L	BIOL	106	4	SCI	GLO		
BIO	104	Microbes and Society	3	L1 903	BIOL	Elective	3	SCI			
BIO	105	General Biology I	4	L1 900L	BIOL	Elective	4	SCI			
BIO	106	General Biology II	4		BIOL	Elective	4	SCI			
BIO	115	Human Body Structure	4		BIOL	Elective	4	SCI			
BIO	152	Man and His Environment	3	L1 905	BIOL	Elective	3	SCI			
BIO	185	Human Anatomy and Physiology I	4		BIOL	201	4				
BIO	186	Human Anatomy and Physiology II	4		BIOL	202	4				
BIO	224	Microbiology	4		BIOL	145	4				
BLD		Building Construction Technology			No	Credit	0				No credit transfers from this department
BLW	201	Introduction to Business Law	3		BUSN	205	3	ETH			Only one of BLW 201 or BLW 203 transfer
BLW	202	Intermediate Business Law	3		BUSN	Elective	3				
BLW	203	Legal Environment of Business	3		BUSN	205	3	ETH			Only one of BLW 201 or BLW 203 transfer
BLW	204	Cyberlaw, Legal Issues in Cyberspace	3		No	Credit	0				
BLW	205	Cyberlaw for Small Business	1		No	Credit	0				
BMD		Biomedical Electronics Technology			No	Credit	0				No credit transfers from this department
BUS	105	Business Mathematics	3		No	Credit	0				
BUS	108	Introduction to Business	3		SBEN	100	3	SOC	ETH	GLO	
BUS	111	Fashion Merchandising I	3		No	Credit	0				
BUS	112	Fashion Merchandising II	3		No	Credit	0				
BUS	113	Intro Engine Tear-Down & Build Up	2		No	Credit	0				
BUS	114	Inspect and Check Engine & Vehicle	3		No	Credit	0				
BUS	115	Precision Measurement & Tools	5		No	Credit	0				
BUS	116	Preventative Maintenance	5		No	Credit	0				
BUS	117	Performance Diagnostic Test	3		No	Credit	0				
BUS	118	Internship	3			Elective					Evaluated individually
BUS	130	Starting Your Own Small Business	4		No	Credit	0				
BUS	136	Building Your Business Plan	3		No	Credit	0				
BUS	137	International Business Practice Firm	3		SBEN	240	3				
BUS	203	Principles of Marketing	3		MKTG	300	3				May not use to fulfill 300-level req in major/minor
BUS	204	Principles of Retailing	3		MKTG	Elective	3				
BUS	206	Direct Marketing Methods	3		MKTG	Elective	0				
BUS	210	Principles of Sales	3		MKTG	340	3				May not use to fulfill 300-level req in major/minor
BUS	211	Principles of Advertising	3		MKTG	Elective	3				
BUS	220	Principles of Management	3		MGMT	305	3				May not use to fulfill 300-level req in major/minor
BUS	221	Human Relations in Organizations	3		BUSN	Credit	0				
BUS	224	Supervisory Management	3		MGMT	Elective	3				
BUS	227	Human Resources Administration	3		BUSN	345	3				May not use to fulfill 300-level req in major/minor
BUS	245	Real Estate Principles	4		No	Credit	0				
BUS	246	Advanced Real Estate Principles	3		No	Credit	0				
BUS	247	Brokerage Administration	3		No	Credit	0				
BUS	253	Marketing Management Internship I	3			Elective					Evaluated individually
BUS	254	Marketing Management Internship II	3			Elective					Evaluated individually
BUS	255	Real Estate Investment	3		No	Credit	0				
BUS	260	Total Quality Management	3		MGMT	Elective	3				
BUS	271	Principles of Finance	3		FINA	Elective	3				
BUS	285	Operations Management	3		MGMT	Elective	3				

COURSE SUBSTITUTIONS FOR STUDENTS TRANSFERRING FROM SOUTH SUBURBAN COLLEGE TO NORTH CENTRAL COLLEGE

Based on the 2022-2024 South Suburban College Catalog and the 2024-2025 North Central College Catalog

South Suburban College Courses				NCC Courses			NCC General Education and Comments			
DEPT	NUM	COURSE TITLE	SEM CRED	IAI EQUIV	Dept	Number	Credit	GENERAL EDUCATION		COMMENT
BUS	296	Topics in Business	1-3			Elective				Evaluated individually
CAD		Computer-Aided Design			No	Credit	0			No credit transfers from this department
CHD	100	Child, Family & Community	3		No	Credit	0			
CHD	104	Child Growth and Development	3		PSYC	210	3			
CHD	105	Introduction to Early Childhood Education	3		NCCC	Elective	3			
CHD	106	Cultural Arts for Young Children	3		NCCC	Elective	3			
CHD	107	Music for Early Childhood	3		NCCC	Elective	3			
CHD	108	Child Health, Safety and Nutrition	3		NCCC	Elective	3			
CHD	202	Language Arts for Young Children	3		NCCC	Elective	3			
CHD	203	The Exceptional Child	3		EDUC	330	3			Only one of CHD 203/EDN 204 transfer; No 300-level req
CHD	205	Multicultural Education	3		EDUC	Elective	3			
CHD	206	Family & Commnty Involvement Exceptionality	3		NCCC	Elective	3			
CHD	207	Infant and Toddler Care	3		No	Credit	0			
CHD	208	Early Childhood Curriculum	3		No	Credit	0			
CHD	209	Guidance of the Young Child	3		EDUC	Elective	3			
CHD	210	Observation & Assessment of Young Children	3		No	Credit	0			
CHD	211	Internship I	3		No	Credit	0			
CHD	212	Internship II	3		No	Credit	0			
CHD	213	Math for the Young Child	3		NCCC	Elective	3			
CHD	215	Administratn & Supervision Child Care Centers	3		No	Credit	0			
CHM	101	Chemistry and Society	3	P1 903	CHEM	100	3	SCI		
CHM	111	Introductory Chemistry I	4	P1 902L	CHEM	Elective	4	SCI		
CHM	113	General Chemistry I	5	P1 902L	CHEM	121	5	SCI		
CHM	114	General Chemistry II	5		CHEM	122	5			
CHM	203	Organic Chemistry I	5		CHEM	251	5			
CHM	204	Organic Chemistry II	5		CHEM	252	5			
CHM	205	Intro to Organic and Biochemistry	5		CHEM	Elective	5	SCI		
CHW		Community Health Worker			No	Credit	0			No credit transfers from this department
CIS		Computer Information Sciences			No	Credit	0			No credit transfers from this department
CJS	101	Introduction to the Criminal Justice System	3		SOCI	340	3	GLO		May not use to fulfill 300-level req in major/minor
CJS	102	Police Administration	3		No	Credit	0			
CJS	103	Police Operations	3		No	Credit	0			
CJS	104	Criminology	3		CRIM	100	3			
CJS	105	Criminal Law	3		SOCI	Elective	3			
CJS	106	Introduction to Corrections	3		No	Credit	0			
CJS	171	Security Administration	3		No	Credit	0			
CJS	201	Security/Loss Prevention	3		No	Credit	0			
CJS	206	Criminal Investigation	3		No	Credit	0			
CJS	207	Evidence and Criminal Procedure	3		No	Credit	0			
CJS	208	Forensic Science	3		No	Credit	0			
CJS	209	Community Policing	3		No	Credit	0			
CJS	210	Traffic Law & Investigation	3		No	Credit	0			
CJS	211	Criminal Justice Field Work I	3		No	Credit	0			
CJS	212	Constitutional Law	3		POLS	Elective	3	SOC		
CJS	213	Police Supervision & Leadership	3		No	Credit	0			
CJS	214	International Criminal Justice	3		SOCI	Elective	3			
CJS	215	Police Report Writing	3		No	Credit	0			
CJS	220	Topics in Criminal Justice	3			Elective				Evaluated individually
CJS	222	Criminal Justice Field Work II	3		No	Credit	0			
CJS	227	State Police Physical Agility ED	3		No	Credit	0			
CAN		Nursing-Basic Nursing Assistant Training Program			No	Credit	0			No credit transfers from this department

COURSE SUBSTITUTIONS FOR STUDENTS TRANSFERRING FROM SOUTH SUBURBAN COLLEGE TO NORTH CENTRAL COLLEGE

Based on the 2022-2024 South Suburban College Catalog and the 2024-2025 North Central College Catalog

South Suburban College Courses					NCC Courses			NCC General Education and Comments			
DEPT	NUM	COURSE TITLE	SEM CRED	IAI EQUIV	Dept	Number	Credit	GENERAL EDUCATION			COMMENT
COM	105	Mass Communications	3		COMM	185	3	SOC	GLO	POW	
COM	106	Interpersonal Communication	3		COMM	200	3	SOC			
COM	107	Intercultural Communication	3		COMM	317	3	SOC	GLO		May not use to fulfill 300-level req in major/minor
COM	200	Audio Production	3		MEDI	262	3				
COM	201	Television Production I	3		MEDI	Elective	3				
COM	202	Television Production II	3		MEDI	222	3				
COM	209	Radio & TV Writing	3		MEDI	Elective	3				
COM	220	Multimedia Production	3		MEDI	Elective	3				
COR		Court Reporting/Verbatim Technology			No	Credit	0				No credit transfers from this department
CS	105	Computers and Society	3		No	Credit	0				
CS	121	Computer Programing	4		CSCE	Elective	4				Consult CSCE deptment for placement
CS	221	Computer Science II	4		CSCE	160	4				Only one of CS 221 or MIS 216 transfer
DMS		Diagnostic Medical Sonography			No	Credit	0				No credit transfers from this department
DRF		Drafting			No	Credit	0				No credit transfers from this department
DRM	120	Stagecraft	3		THEA	141	3				
DRM	151	Theatre Appreciation	3	F1 907	THEA	102	3	ART			
DRM	152	Plays and Playwrights	3	H3 902	ENGL	Elective	3	HUM			
DRM	155	Ethnic Traditions in American Theatre	3	F1 909D	THEA	Elective	3	HUM			
DRM	157	Acting I	3		THEA	150	3				
DRM	160	Directing I	3		THEA	330	3				May not use to fulfill 300-level req in major/minor
DRM	167	Acting II	3		THEA	250	3				
DRM	199	Theatre Practicum	1-3		THEA	115					A maximum 6 hours of THEA 115 transfer
ECG		Echocardiography			No	Credit	0				No credit transfers from this department
ECO	201	Principles of Economics, Macro	3	S3 901	ECON	205	3	SOC			
ECO	202	Principles of Economics, Micro	3	S3 902	ECON	200	3	SOC			
EDU	110	Foundations of American Education	3		EDUC	101	3	SOC	POW		
EDU	111	Language Arts in Elementary Schools	3		EDUC	Elective	3				
EDU	150	Educational Technology	3		EDUC	235	3				
EDU	204	Introduction to Special Education	3		EDUC	330	3				Only one of CHD 203/EDU 204 transfer; No 300-level req
EGR	101	Engineering Graphics	3		ENGR	Elective	3				
EGR	201	Electrical Circuits	4		ELEC	250	4				
EGR	203	Statics	3		PHYS	211	3				
EGR	204	Engineering Dynamics	3		PHYS	Elective	3				
EGR	205	Engineering: Statics and Dynamics	5		PHYS	Elective	5				
ELC		Electronics Engineering Tech Courses			No	Credit	0				No credit transfers from this department
EMS		Emergency Med Services-Paramedic			No	Credit	0				No credit transfers from this department
EMT		Emergency Medical Technician			No	Credit	0				No credit transfers from this department
ENG		All Courses Numbered Below 100			No	Credit	0				
ENG	101	Composition and Rhetoric	3	C1 900	ENGL	110	3	COMP			
ENG	102	Composition and Research	3	C1 901R	ENGL	110	3	COMP			or WRI if ENG 101 is complete
ENG	103	Intro to American Literature I, Colonial-1860	3	H3 914	ENGL	Elective	3	HUM			
ENG	104	Intro to American Literature II, 1860-Present	3	H3 915	ENGL	208	3	HUM			
ENG	105	Creative Writing: Fiction	3		ENGL	Elective	3	ART			
ENG	108	Creative Writing: Poetry	3		ENGL	Elective	3	ART			
ENG	111	Introduction to Literature I	3	H3 900	ENGL	Elective	3	HUM			
ENG	113	Introduction to Children's Literature	3		ENGL	Elective	3	ART			
ENG	121	Technical and Business Writing	3		No	Credit	0				
ENG	123	African American Literature	3		ENGL	232	3	HUM	POW		
ENG	124	Intro Linguistics, Structure & Function Amer Eng	3		ENGL	Elective	3				
ENG	202	Introduction to British Literature I	3	H3 912	ENGL	202	3	HUM			
ENG	203	Introduction to British Literature II	3	H3 913	ENGL	206	3	HUM			

COURSE SUBSTITUTIONS FOR STUDENTS TRANSFERRING FROM SOUTH SUBURBAN COLLEGE TO NORTH CENTRAL COLLEGE

Based on the 2022-2024 South Suburban College Catalog and the 2024-2025 North Central College Catalog

South Suburban College Courses					NCC Courses			NCC General Education and Comments				
DEPT	NUM	COURSE TITLE	SEM CRED	IAI EQUIV	Dept	Number	Credit	GENERAL EDUCATION			COMMENT	
ENG	204	Shakespeare	3	H3 905	ENGL	302	3	HUM			May not use to fulfill 300-level req in major/minor	
ENG	206	World Literature I	3	H3 906	ENGL	Elective	3	HUM				
ENG	207	World Literature II	3		ENGL	Elective	3					
ENG	208	Introduction to Women's Literature	3	H3 911D	ENGL	234	3	HUM	POW			
FAD	205	Emergency Care and Safety	2		HTSC	100	2	WEL				
FOS		Forensic Science Technology			No	Credit	0				No credit transfers from this department	
GEO	103	Geography of the Developed World	3	S4 901	SOCI	Elective	3	SOC				
GEO	104	Geography of the Emerging World	3	S4 902N	SOCI	Elective	3	SOC				
GEO	205	Geography of Oceania	3		SOCI	Elective	3	SOC				
GLG	101	Physical Geology	4	P1 907L	SCIE	Elective	4	SCI				
HFA	108	Introduction to Film Appreciation	3	F2 908	FILM	100	3	ART				
HFA	109	Introduction to Film History	3	F2 909	FILM	Elective	3	HUM				
HFA	120	Music Appreciation	3	F1 900	MUSI	150	3	HUM				
HFA	158	Drama into Film	3		FILM	Elective	3	HUM				
HFA	201	General Humanities I	3		NCCC	Elective	3	HUM				
HFA	202	General Humanities II	3		NCCC	Elective	3	HUM				
HFA	203	Humanities of Eastern Asia	3		EAST	Elective	3	HUM				
HIS	101	History of Modern East Asian Civilization	3		HIST	Elective	3	HUM				
HIS	109	Europe to the 19th Century	3	S2 903	HIST	Elective	3	HUM				
HIS	110	History of Modern Europe (19th & 20th Centuries)	3	S2 903	HIST	285	3	HUM				
HIS	151	African-American History	3		HIST	112	3					
HIS	155	History of Latin America	i	S2 910N	HIST	175	3	SOC				
HIS	203	Early American History	3	S2 900	HIST	Elective	3	SOC	GLO	POW		
HIS	204	Later American History	3	S2 901	HIST	Elective	3	SOC	GLO	POW		
HIS	220	Topics in History	3		HIST	Elective	0				Evaluated individually	
HIS	271	History of Modern African Civilization	3	S2 907N	HIST	185	3	SOC				
HIT		Health Information on Technology			No	Credit					No credit transfers from this department	
HLT	101	Health and Wellness	2		HTSC	Elective	2	WEL				
HLT	105	Professionalism in Healthcare	3		No	Credit	0					
HLT	110	Survey of Allied Health Careers	2		HTSC	Elective	2					
HSA		Human Services			No	Credit	0				No credit transfers from this department	
HUM	210	World Mythology	3	H9 901	CLSS	250	3	HUM				
HUM	220	Special Topics in the Arts	1-3			Elective					Evaluated individually	
MAS		Medical Assistant			No	Credit	0				No credit transfers from this department	
MDR		Medical Records Technology			No	Credit	0				No credit transfers from this department	
MIS	102	Computer Logic	3		CSCE	Elective	3					
MIS	104	Basic/Visual Basic Programming	3		INFS	Elective	3					
MIS	205	Computer Systems Development	3		BUSN	Elective	3					
MIS	212	Visual C# Programming	3		CSCE	Elective	3				Consult CSCE department for placement	
MIS	214	Advanced Visual Basics	3		CSCE	Elective	3				Consult CSCE department for placement	
MIS	216	Java Programming Introduction	3		CSCE	160	3				Only one of CS 221 or MIS 216 transfer	
MIS	221	Data Base Processing	3		CSCE	Elective	3					
MIS	250	Management Information System	3		BUSN	Elective	3					
MIS	299	Special Topics in Computer Info Systems	1-6			Elective					Evaluated individually	
MIS		All Other MIS Courses			No	Credit	0					
MRI		Magnetic Resonance Imaging			No	Credit	0				No credit transfers from this department	
MTH		All Courses Numbered Below 100			No	Credit	0					
MTH	100	Intermediate Algebra	4		No	Credit	0				Credit does not transfer	
MTH	103	Fundamentals of Mathematics	3		No	Credit	0					
MTH	106	Technical Math I, Algebra & Trigonometry	5		No	Credit	0					
MTH	111	Technical Math II, Anal Geometry & Calculus	5		MATH	Elective	5	QUA				

COURSE SUBSTITUTIONS FOR STUDENTS TRANSFERRING FROM SOUTH SUBURBAN COLLEGE TO NORTH CENTRAL COLLEGE

Based on the 2022-2024 South Suburban College Catalog and the 2024-2025 North Central College Catalog

South Suburban College Courses					NCC Courses			NCC General Education and Comments			
DEPT	NUM	COURSE TITLE	SEM CRED	IAI EQUIV	Dept	Number	Credit	GENERAL EDUCATION		COMMENT	
MTH	115	General Education Mathematics	3	M1 904	MATH	120	3	QUA			
MTH	126	Fundamentals of Statistics	3	M1 902	PSYC	250	3	QUA		Only one of MTH 126 or MTH 211 transfers	
MTH	145	Math Concepts & Structures I	4		MATH	107	4				
MTH	146	Math Concepts & Structures II	4	M1 903	MATH	108	4	QUA			
MTH	161	Finite Mathematics	4	M1 906	MATH	130	4	QUA			
MTH	165	College Algebra	4		MATH	Elective	4				
MTH	169	Precalculus	5		MATH	140	5				
MTH	180	Calculus for Business and Social Science	4	M1 900-B	MATH	Elective	4	QUA			
MTH	190	Calculus and Analytic Geometry I	5	M1 900-1	MATH	151	5	QUA			
MTH	200	Introduction to Linear Algebra	3		MATH	300	3			May not use to fulfill 300-level req in major/minor	
MTH	203	Calculus and Analytic Geometry II	5	M1900-2	MATH	152	5	QUA			
MTH	204	Calculus and Analytic Geometry III	4	M1 900-3	MATH	253	4	QUA			
MTH	205	Differential Equations	3		MATH	315	3			May not use to fulfill 300-level req in major/minor	
MTH	211	Introductory Statistics	4	M1 902	BUSN	265	4	QUA		Only one of MTH 126 or MTH 211 transfer	
MUS	105	Aural Foundations of Improvisation I	2		MUSI	Elective	2				
MUS	106	Fundamentals of Music	3		MUSI	Elective	3				
MUS	107	Fundamentals of Ear Training	1		MUSI	Elective	1				
MUS	109	Introduction to Music Business	3		MUSI	Elective	3				
MUS	115	Introduction to Music Literature	3		MUSI	258	3	HUM			
MUS	116	Music Theory I	3		MUSI	101	3				
MUS	117	Ear Training and Sight Reading I	1		MUSI	Elective	1				
MUS	118	Italian Diction	1		MUSI	Elective	1				
MUS	119	German Diction	1		MUSI	Elective	1				
MUS	123	Music Appreciation	3	F1 900	MUSI	150	3	ART			
MUS	126	Music Theory II	3		MUSI	102	3				
MUS	127	Ear Training and Sight Reading II	1		MUSI	108	1				
MUS	131	Private Applied Music Piano	2		MUAL	110	2				
MUS	133	Private Applied Music Voice	2		MUAL	100	2				
MUS	135	Private Applied Music Brass	2		MUAL	Elective	2				
MUS	137	Private Applied Music Woodwinds	2		MUAL	129	2				
MUS	139	Private Applied Music Strings	2		MUAL	189	2				
MUS	141	Private Applied Music Percussion	2		MUAL	160	2				
MUS	143	Private Applied Music Organ	2		MUAL	112	2				
MUS	145	Private Applied Music Classical Guitar	2		MUAL	185	2				
MUS	146	Beginning Private Composition	2		MUAL	146	2				
MUS	151	Private Applied Music Piano	1		MUAL	110	1				
MUS	153	Private Applied Music Voice	1		MUAL	100	1				
MUS	155	Private Applied Music Brass	1		MUAL	Elective	1				
MUS	157	Private Applied Music Woodwinds	1		MUAL	129	1				
MUS	159	Private Applied Music Strings	1		MUAL	189	1				
MUS	161	Private Applied Music Percussion	1		MUAL	160	1				
MUS	163	Private Applied Music Organ	1		MUAL	112	1				
MUS	165	Private Applied Music Classical Guitar	1		MUAL	185	1				
MUS	169	Class Instruction Piano I	1		MUAL	119	1				
MUS	170	Class Instruction Piano II	1		MUAL	119	1				
MUS	171	Keyboard Harmony I	1		MUAL	119	1				
MUS	172	Keyboard Harmony II	1		MUAL	119	1				
MUS	173	Class Instruction, Voice	1		MUED	Elective	1				
MUS	174	Class Instruction, Voice	1		MUED	Elective	1				
MUS	175	Class Instruction, Brass	1		MUED	Elective	1				
MUS	176	Class Instruction, Brass	1		MUED	206	1				

COURSE SUBSTITUTIONS FOR STUDENTS TRANSFERRING FROM SOUTH SUBURBAN COLLEGE TO NORTH CENTRAL COLLEGE

Based on the 2022-2024 South Suburban College Catalog and the 2024-2025 North Central College Catalog

South Suburban College Courses				NCC Courses			NCC General Education and Comments			
DEPT	NUM	COURSE TITLE	SEM CRED	IAI EQUIV	Dept	Number	Credit	GENERAL EDUCATION		COMMENT
MUS	177	Class Instruction, Woodwinds	1		MUED	Elective	1			
MUS	178	Class Instruction, Woodwinds	1		MUED	205	1			
MUS	179	Class Instruction, Strings	1		MUED	Elective	1			
MUS	180	Class Instruction, Strings	1		MUED	207	1			
MUS	181	Class Instruction, Percussion	1		MUED	208	1			
MUS	183	Jazz Combo	1		MUEN	121	1			
MUS	184	Brass Ensemble	1		MUEN	Ensemble	1			
MUS	185	Percussion Ensemble	1		MUEN	Ensemble	1			
MUS	186	Woodwind Ensemble	1		MUEN	Ensemble	1			
MUS	187	South Suburban College Voices	1		MUEN	100	1			
MUS	189	Madrigal Singer	1		MUEN	Ensemble	1			
MUS	190	South Suburban Chorale	1		MUEN	Ensemble	1			
MUS	191	Opera Workshop	2		MJEN	Ensemble	2			
MUS	195	Symphonic Band	1		MUEN	111	1			
MUS	197	Jazz Band	1		MUEN	120	1			
MUS	198	Orchestra	1		MUEN	112	1			
MUS	199	Chamber Ensemble	1		MUEN	114	1			
MUS	216	Music Theory III	3		MUSI	201	3			
MUS	217	Ear Training and Sight Reading III	1		MUSI	Elective	1			
MUS	218	English Diction	1		MUSI	Elective	1			
MUS	219	French Diction	1		MUSI	Elective	1			
MUS	220	Introduction to Rock 'n Roll	3		MUSI	Elective	3			
MUS	221	Introduction to Jazz	3		MUSI	Elective	3			
MUS	223	Introduction to African American Music	3	F1 905D	MUSI	Elective	3	ART		
MUS	225	Introduction to Music Technology	3		MUSI	Elective	3			
MUS	226	Music Theory IV	3		MUSI	202	3			
MUS	227	Ear Training and Sight Reading IV	1		MUSI	Elective	1			
MUS	228	Music Technology II	3		MUSI	228	3			
MUS	231	Advanced Applied Music Piano	2		MUAL	310	2			May not use to fulfill 300-level req in major/minor
MUS	233	Advanced Applied Music Voice	2		MUAL	300	2			May not use to fulfill 300-level req in major/minor
MUS	235	Advanced Applied Music Brass	2		MUAL	Elective	2			
MUS	237	Advanced Applied Music Woodwinds	2		MUAL	329	2			May not use to fulfill 300-level req in major/minor
MUS	239	Advanced Applied Music Strings	2		MUAL	389	2			May not use to fulfill 300-level req in major/minor
MUS	241	Advanced Applied Music Percussion	2		MUAL	360	2			May not use to fulfill 300-level req in major/minor
MUS	243	Advanced Applied Music Organ	2		MUAL	312	2			May not use to fulfill 300-level req in major/minor
MUS	245	Advanced Applied Music Classical Guitar	2		MUAL	385	2			May not use to fulfill 300-level req in major/minor
MUS	246	Private Intermediate Composition	2		MUAL	305	2			May not use to fulfill 300-level req in major/minor
MUS	251	Advanced Applied Music Piano	1		MUAL	310	1			May not use to fulfill 300-level req in major/minor
MUS	253	Advanced Applied Music Voice	1		MUAL	300	1			May not use to fulfill 300-level req in major/minor
MUS	255	Advanced Applied Music Brass	1		MUAL	Elective	1			
MUS	257	Advanced Applied Music Woodwinds	1		MUAL	329	1			May not use to fulfill 300-level req in major/minor
MUS	259	Advanced Applied Music Strings	1		MUAL	389	1			May not use to fulfill 300-level req in major/minor
MUS	261	Advanced Applied Music Percussion	1		MUAL	360	1			May not use to fulfill 300-level req in major/minor
MUS	263	Advanced Applied Music Organ	1		MUAL	312	1			May not use to fulfill 300-level req in major/minor
MUS	265	Adv Appl Music Classical Guitar	1		MUAL	385	1			May not use to fulfill 300-level req in major/minor
MUS	271	Keyboard Harmony III	1		MUED	319	1			May not use to fulfill 300-level req in major/minor
MUS	272	Keyboard Harmony IV	1		MUED	319	1			May not use to fulfill 300-level req in major/minor
NAN	120	Fundamentals of Nanoscience I	4		SCIE	Elective	4	SCI		
NAN	130	Fundamentals of Nanoscience II	4		SCIE	Elective	4	SCI		
NAN		All Other Nanoscience Courses			No	Credit	0			
NAS		Nursing-Basic Nursing Assist Training			No	Credit	0			No credit transfers from this department

COURSE SUBSTITUTIONS FOR STUDENTS TRANSFERRING FROM SOUTH SUBURBAN COLLEGE TO NORTH CENTRAL COLLEGE

Based on the 2022-2024 South Suburban College Catalog and the 2024-2025 North Central College Catalog

South Suburban College Courses				NCC Courses			NCC General Education and Comments			
DEPT	NUM	COURSE TITLE	SEM CRED	IAI EQUIV	Dept	Number	Credit	GENERAL EDUCATION		COMMENT
NTR	100	Basic Nutrition	2		HTSC	Elective	2			
OAT	132	Microsoft Access	3		INFS	Elective	3			
OAT		All Other Office Administrative & Technology			No	Credit	0			
OCS		Overview for College Success			No	Credit	0			No credit transfers from this department
OTA		Occupational Therapy Assistant			No	Credit	0			No credit transfers from this department
PE	100	Physical Fitness I	1		KINE	Activity	1			A maximum 8 hours of KINE activity transfer
PE	101	Physical Fitness II	1		KINE	Activity	1			A maximum 8 hours of KINE activity transfer
PE	105	Beginning Golf	1		KINE	111	1			A maximum 8 hours of KINE activity transfer
PE	106	Beginning Weight Training I	1		KINE	Activity	1			A maximum 8 hours of KINE activity transfer
PE	113	Fitness Walking	1		KINE	Activity	1			A maximum 8 hours of KINE activity transfer
PE	115	Low Impact/Step Aerobics	1		KINE	Activity	1			A maximum 8 hours of KINE activity transfer
PE	200	Physical Fitness III	1		KINE	Activity	1			A maximum 8 hours of KINE activity transfer
PE	201	Physical Fitness IV	1		KINE	Activity	1			A maximum 8 hours of KINE activity transfer
PE	206	Progressive Weight Training II	1		KINE	Activity	1			A maximum 8 hours of KINE activity transfer
PE	215	Advanced Impact Step Aerobics	1		KINE	Activity	1			A maximum 8 hours of KINE activity transfer
PE	216	Progressive Weight Training III	1		KINE	Activity	1			A maximum 8 hours of KINE activity transfer
PE	226	Progressive Weight Training IV	1		KINE	Activity	1			A maximum 8 hours of KINE activity transfer
PHB		Phlebotomy			No	Credit	0			No credit transfers from this department
PHL	101	Introduction to Philosophy	3	H4 900	PHIL	100	3	HUM	ETH	
PHL	102	Ethics	3	H4 904	PHIL	110	3	HUM	ETH	
PHL	103	World Religions	3	H5 904N	RELG	100	3	HUM	GLO	
PHL	105	Logic	3	H4 906	PHIL	230	3	QUA		
PHS	101	Physical Science	4	P9 900L	SCIE	Elective	4	SCI		
PHT		Pharmacy Technician			No	Credit	0			No credit transfers from this department
PHY	101	Mechanics and Heat	4	P1 900L	PHYS	131	4	SCI		
PHY	102	Sound, Light, Electcty, Magnetism and Modern	4		PHYS	132	4			
PHY	115	Topics in Applied Physics	3		No	Credit	0			
PHY	210	University Physics I	4	P2 900L	PHYS	Elective	4	SCI		PHY 210 + PHY 211 = PHYS 161
PHY	211	University Physics II	4		PHYS	Elective	4			PHY 211 + PHY 212 = PHYS 162
PHY	212	University Physics III	4		PHYS	Elective	4			
PLA		Paralegal			No	Credit	0			No credit transfers from this department
PSC	101	American National Government	3	S5 900	POLS	101	3	SOC	POW	
PSC	102	American State and Local Government	3	S5 902	POLS	Elective	3	SOC	POW	
PSC	108	Contemporary Political Problems	3		POLS	Elective	3			
PSC	210	Comparative Foreign Governments	3	S5 905	POLS	221	3	SOC	GLO	
PSY	101	Introduction to Psychology	3	S6 900	PSYC	100	3	SOC		
PSY	103	Psychology of Personal Adjustment	3		PSYC	120	3			This course does not count toward PSYC major
PSY	105	Organizational Psychology	3		PSYC	270	3	SOC		
PSY	202	Educational Psychology	3		PSYC	205	3	SOC		
PSY	204	Social Psychology	3	S8 900	PSYC	240	3	SOC		
PSY	205	Theories of Personality	3		PSYC	320	3	SOC		May not use to fulfill 300-level req in major/minor
PSY	206	Abnormal Psychology	3		PSYC	324	3	SOC		May not use to fulfill 300-level req in major/minor
PSY	211	Human Growth and Development (Lifespan)	3	S6 902	PSYC	235	3	SOC		
PSY	212	Adolescent Psychology	3	S6 904	PSYC	220	3	SOC		
PSY	220	Human Sexuality	3		PSYC	Elective	3			
RAD		Radiologic Technology			No	Credit	0			No credit transfers from this department
RDG		Reading			No	Credit	0			No credit transfers from this department
SOC	101	Introduction to Sociology	3	S7 900	SOCI	100	3	SOC	POW	
SOC	102	Social Problems	3	S7 901	SOCI	Elective	3	SOC		
SOC	204	Religion and Society	3		RELG	Elective	3	HUM		
SOC	205	Marriage and the Family	3	S7 902	SOCI	220	3	SOC		

COURSE SUBSTITUTIONS FOR STUDENTS TRANSFERRING FROM SOUTH SUBURBAN COLLEGE TO NORTH CENTRAL COLLEGE

Based on the 2022-2024 South Suburban College Catalog and the 2024-2025 North Central College Catalog

South Suburban College Courses				NCC Courses			NCC General Education and Comments			
DEPT	NUM	COURSE TITLE	SEM CRED	IAI EQUIV	Dept	Number	Credit	GENERAL EDUCATION		COMMENT
SOC	206	Juvenile Delinquency	3		SOCI	221	3	POW		
SOC	225	Racial and Ethnic Relations	3		SOCI	211	3	SOC	POW	
SPA		Speech Language Pathology Assistant			No	Credit	0			No credit transfers from this department
SPE	108	Oral Communication	3	C2 900	COMM	110	3			
SPN	101	Elementary Spanish I	4		SPAN	101	4			
SPN	102	Elementary Spanish II	4		SPAN	102	4			
SPN	113	Elementary Conversational Spanish	2		SPAN	Elective	2			
SPN	115	Spanish for Health Care Providers I	3		No	Credit	0			
SPN	203	Intermediate Spanish I	4		SPAN	201	4	HUM	GLO	
SPN	204	Intermediate Spanish II	4	H1 900	SPAN	202	4	HUM	GLO	
SPN	205	Spanish for the Spanish-Speaking	4		SPAN	Elective	4			
SPN	213	Intermediate Conversational Spanish	2		SPAN	Elective	2			
SPN	215	Spanish for Health Care Providers II	3		No	Credit	0			
SSK		Study Skills			No	Credit	0			No credit transfers from this department
URB	101	Introduction to Urban Studies	3		SOCI	Elective	3	SOC		
URB	141	African-American Arts	3		NCCC	Elective	3	HUM		
URB	214	Minority Groups Politics	3		POLS	Elective	3	SOC		