

NORTH CENTRAL COLLEGE

NAPERVILLE, ILLINOIS

Founded 1861



Persistence Report Fall 2018

Student Success and Academic Services

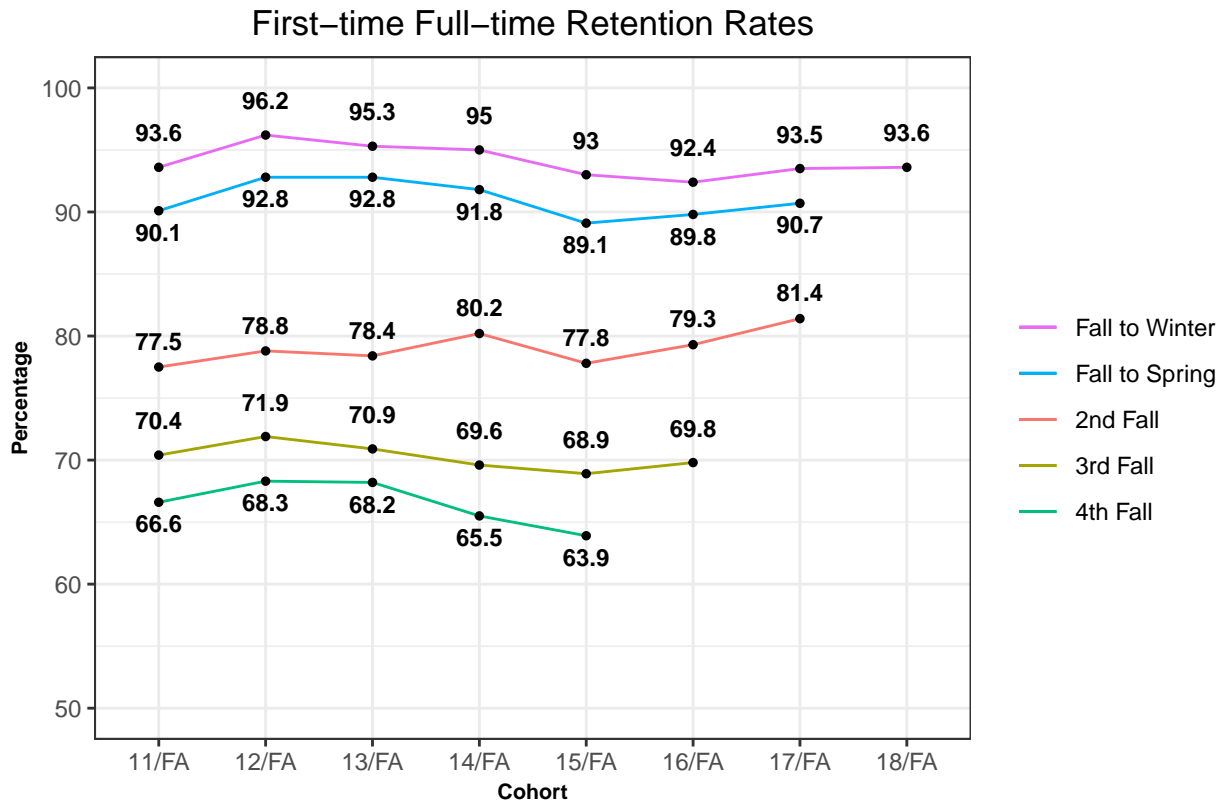
Released Winter 2019

Contents

Overall Retention Rates	2
First-time Full-time Retention	2
First-time Full-time Retention By Ethnicity	3
Transfer Retention	4
Individual Cohort Retention and Graduation Performance	6
Fall 2011 - First-time Full-time	6
Fall 2011 - Transfer	7
Fall 2012 - First-time Full-time	8
Fall 2012 - Transfer	9
Fall 2013 - First-time Full-time	10
Fall 2013 - Transfer	11
Fall 2014 - First-time Full-time	12
Fall 2014 - Transfer	13
Fall 2015 - First-time Full-time	14
Fall 2015 - Transfer	15
Fall 2016 - First-time Full-time	16
Fall 2016 - Transfer	17
Fall 2017 - First-time Full-time	18
Fall 2017 - Transfer	18

Overall Retention Rates

First-time Full-time Retention

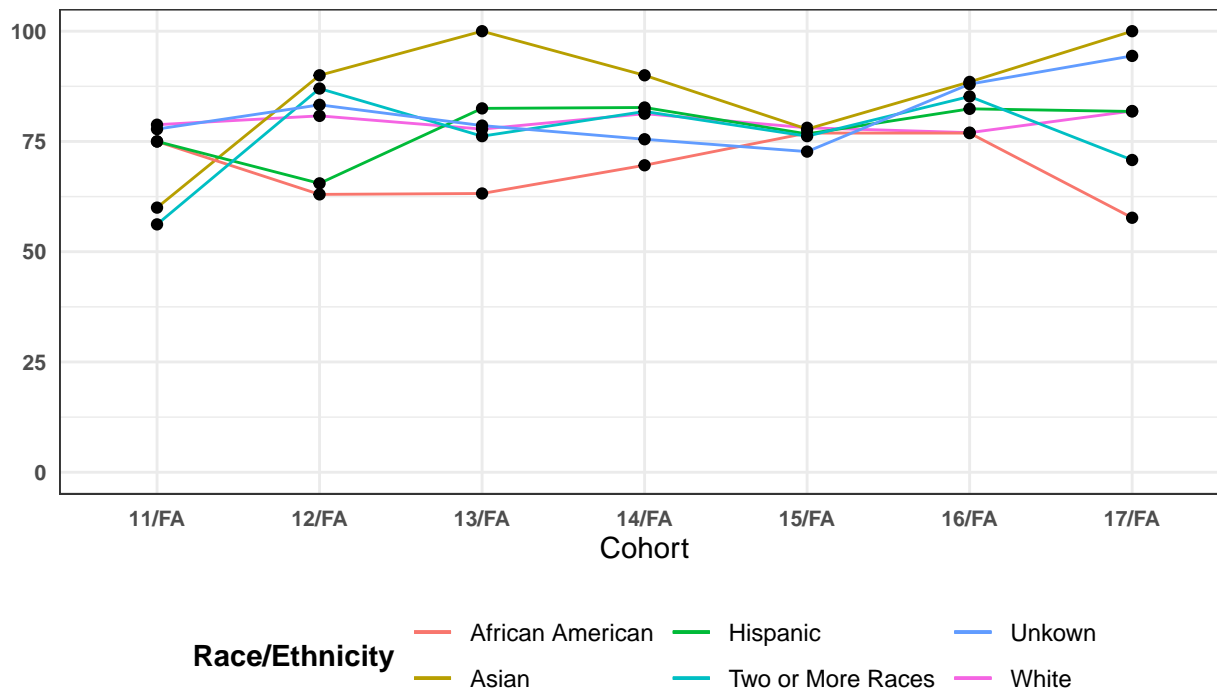


Please note the Y axis ranges from 50% to 100%

First-time Full-time Retention By Ethnicity

First-time Full-time Retention By Ethnicity - Visualization

First to Second–Year Retention by Race/Ethnicity
First-time Full-time Year Students



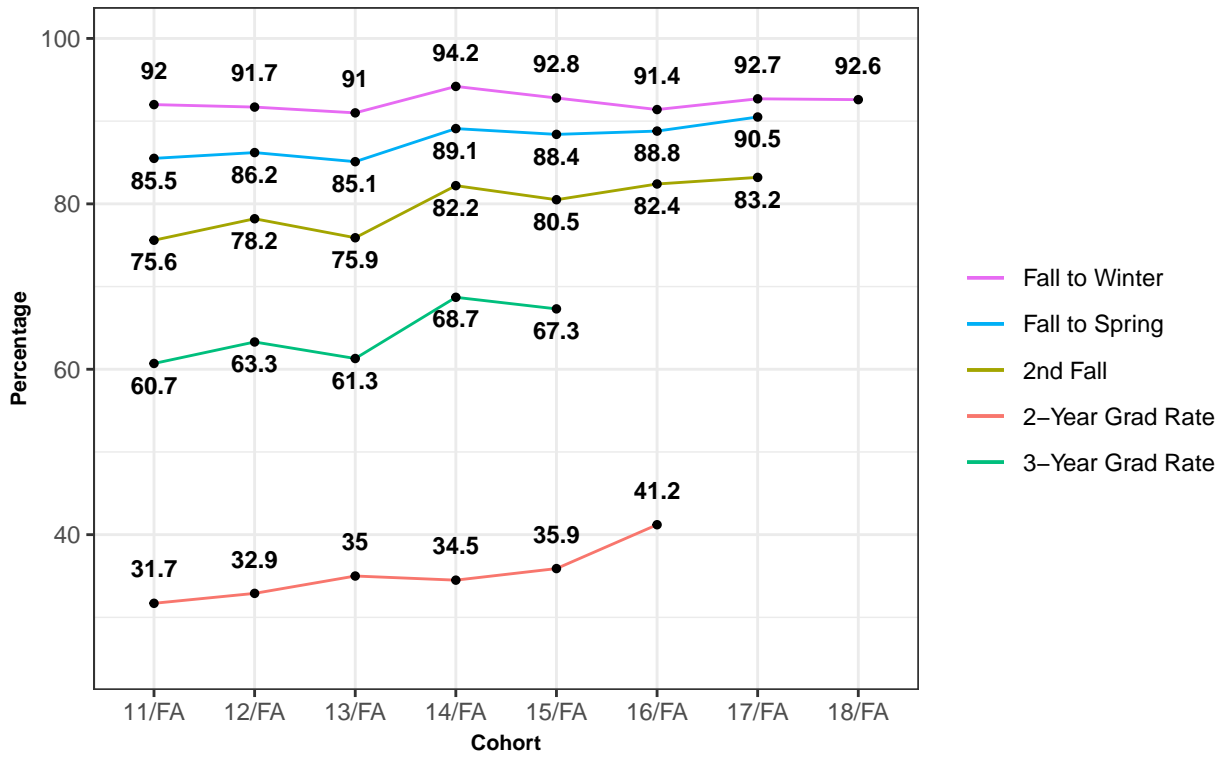
Rates not charted for Race/Ethnicity with low n.

First-time Full-time Retention By Ethnicity - Table

Cohort	American/ Alaskan/ Native		Asian		African American		Hawaiian Pacific Islander		Hispanic		Two or More		Unknown		White	
	Initial Count	% Return	Initial Count	% Return	Initial Count	% Return	Initial Count	% Return	Initial Count	% Return	Initial Count	% Return	Initial Count	% Return	Initial Count	% Return
11/FA	1	100	5	60	24	75			52	75	16	56.2	9	77.8	467	78.8
12/FA	2	100	10	90	27	63	2	50	55	65.5	23	87	12	83.3	421	80.8
13/FA			9	100	19	63.2			57	82.5	21	76.2	14	78.6	410	77.8
14/FA			10	90	23	69.6			75	82.7	11	81.8	98	75.5	359	81.3
15/FA	4	100	18	77.8	26	76.9	1	100	86	76.7	21	76.2	22	72.7	421	78.1
16/FA			26	88.5	26	76.9			102	82.4	27	85.2	25	88	383	77
17/FA			21	100	26	57.7	1	100	110	81.8	24	70.8	18	94.4	403	81.9
18/FA			25		46				83		23		26		347	

Transfer Retention

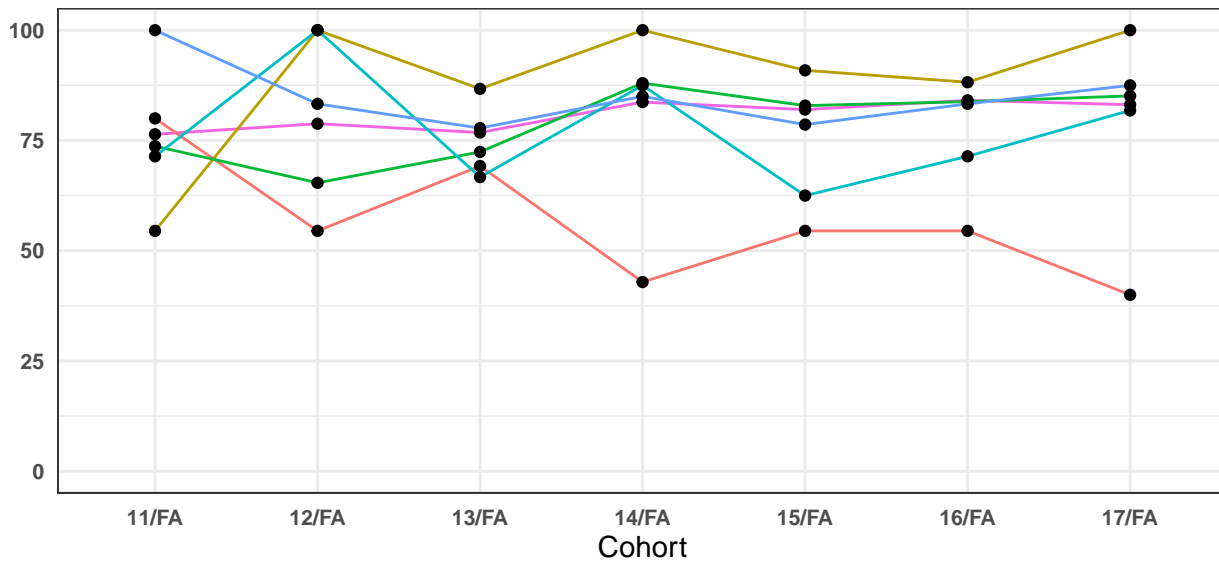
Transfer Retention Rates



Please note the Y axis ranges from 25% to 100%

Transfer Retention By Ethnicity - Visualization

First to Second–Year Retention by Race/Ethnicity
Transfer Students



Race/Ethnicity

- African American
- Hispanic
- Unkown
- Asian
- Two or More Races
- White

Rates not charted for Race/Ethnicity with low n.

Transfer Retention By Ethnicity - Table

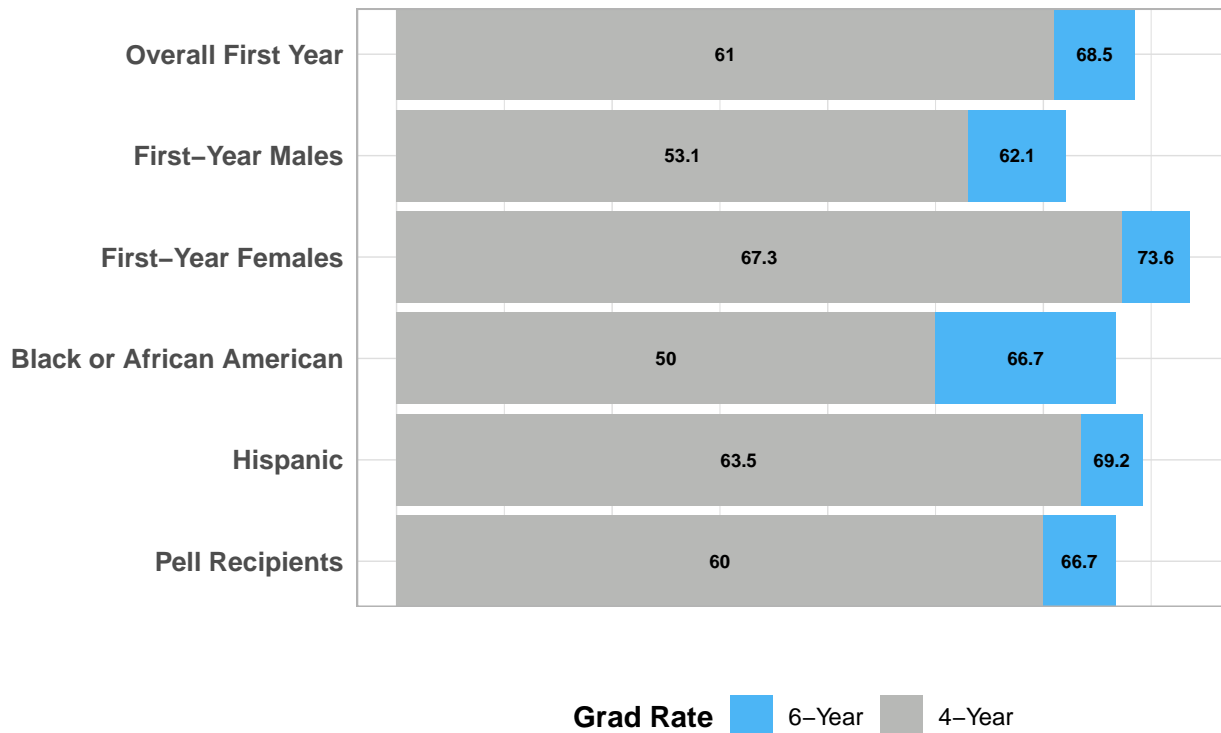
Cohort	American/ Alaskan/ Native		Asian		African American		Hawaiian Pacific Islander		Hispanic		Two or More		Unkown		White	
	Initial Count	% Return	Initial Count	% Return	Initial Count	% Return	Initial Count	% Return	Initial Count	% Return	Initial Count	% Return	Initial Count	% Return	Initial Count	% Return
11/FA			11	54.5	10	80			19	73.7	7	71.4	3	100	212	76.4
12/FA			9	100	11	54.5	1	100	26	65.4	8	100	12	83.3	222	78.8
13/FA	2		15	86.7	13	69.2			29	72.4	9	66.7	9	77.8	246	76.8
14/FA			3	100	14	42.9	1		25	88	8	87.5	40	85	184	83.7
15/FA			11	90.9	11	54.5			35	82.9	8	62.5	14	78.6	172	82
16/FA			17	88.2	11	54.5			37	83.8	14	71.4	24	83.3	164	84.1
17/FA			11	100	10	40	1	100	47	85.1	11	81.8	16	87.5	166	83.1
18/FA			13		12				48		12		10		177	

Individual Cohort Retention and Graduation Performance

Fall 2011 - First-time Full-time

Population	Cohort	Size	Winter	Spring	Second Fall	Third Fall	Fourth Fall	Four-Year Grad Rate	Six-Year Grad Rate
Overall First Year	11/FA	574	93.6	90.1	77.5	70.4	66.6	61	68.5
First-Year Males	11/FA	256	94.5	89.1	71.9	64.8	60.2	53.1	62.1
First-Year Females	11/FA	318	92.8	90.9	82.1	74.8	71.7	67.3	73.6
Black or African American	11/FA	24	91.7	83.3	75.0	70.8	70.8	50	66.7
Hispanic	11/FA	52	92.3	90.4	75.0	69.2	69.2	63.5	69.2
Pell Recipients	11/FA	165	95.2	88.5	76.4	70.9	66.7	60	66.7

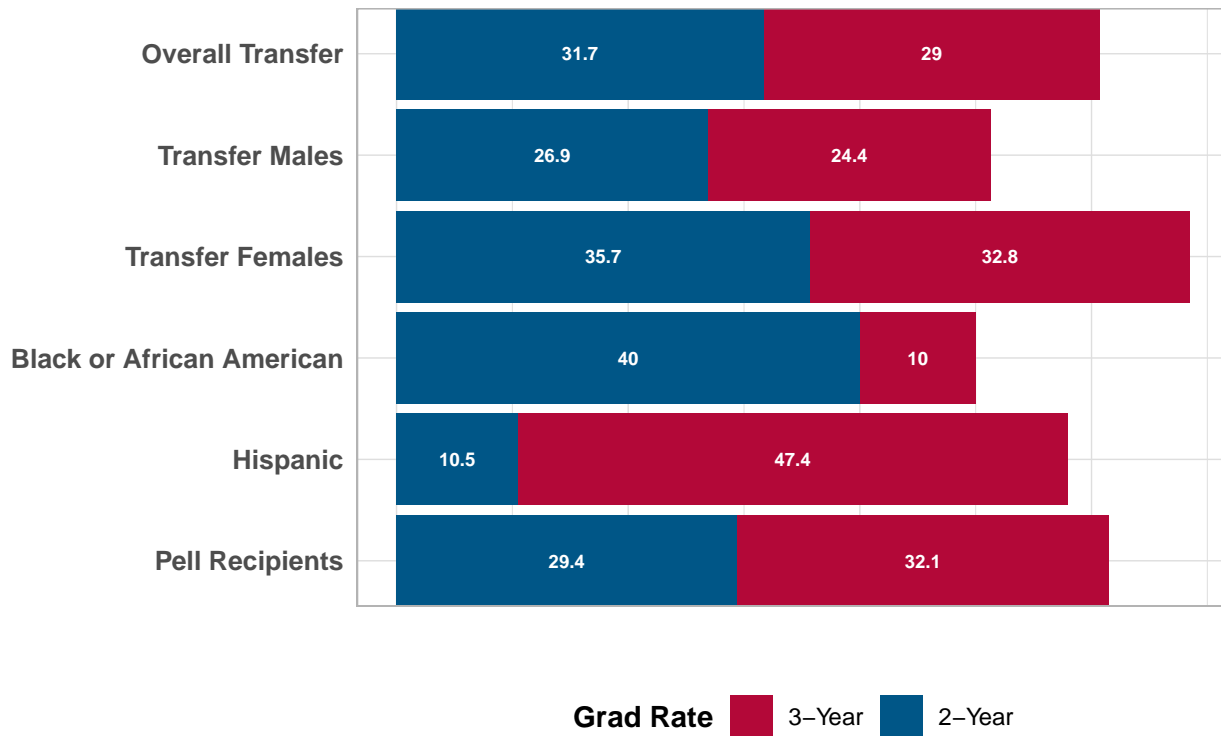
Fall 2011 First Year Students
Graduation Rate by Select Characteristics



Fall 2011 - Transfer

Population	Cohort	Size	Winter	Spring	Second Fall	Third Fall	Fourth Fall	Two-Year Grad Rate	Three-Year Grad Rate
Overall Transfer	11/FA	262	92.0	85.5	75.6	32.8	8.8	31.7	60.7
Transfer Males	11/FA	119	91.6	88.2	77.3	32.8	10.9	26.9	51.3
Transfer Females	11/FA	143	92.3	83.2	74.1	32.9	7.0	35.7	68.5
Black or African American	11/FA	10	100.0	100.0	80.0	30.0	30.0	40	50
Hispanic	11/FA	19	94.7	89.5	73.7	47.4	10.5	10.5	57.9
Pell Recipients	11/FA	109	95.4	89.0	78.9	37.6	9.2	29.4	61.5

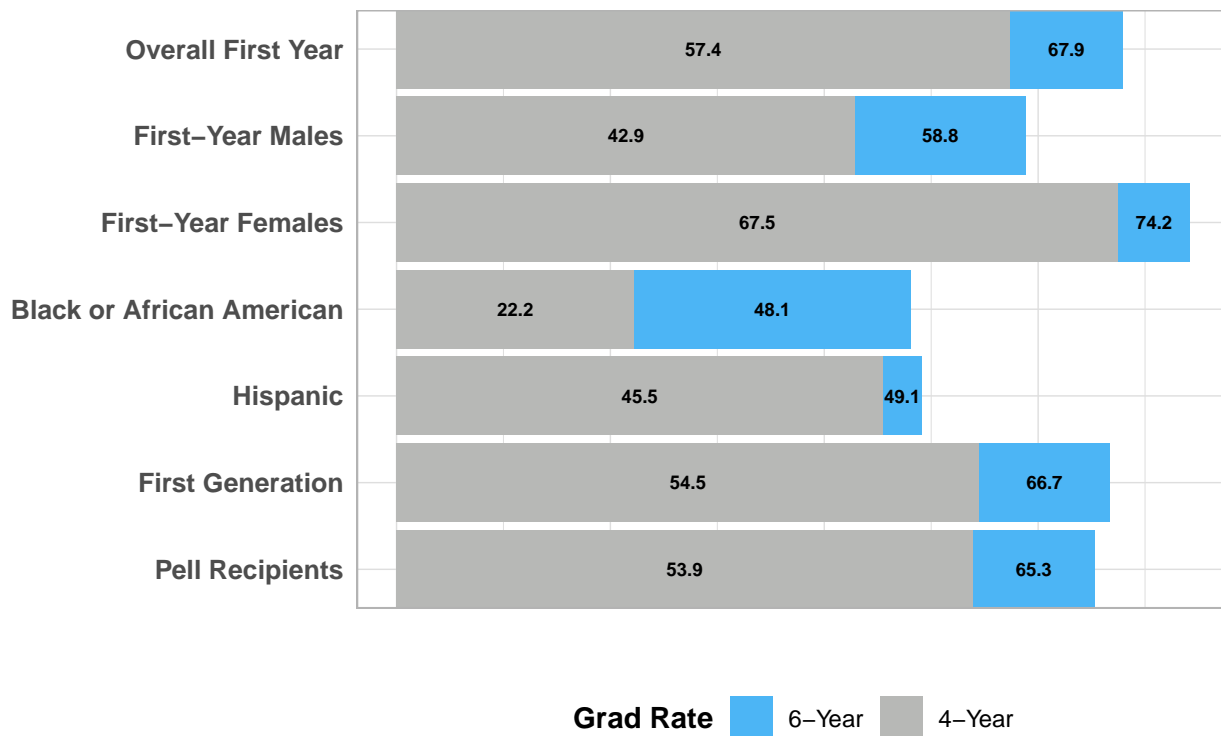
Fall 2011 Transfer Students
Graduation Rate by Select Characteristics



Fall 2012 - First-time Full-time

Population	Cohort	Size	Winter	Spring	Second Fall	Third Fall	Fourth Fall	Four-Year Grad Rate	Six-Year Grad Rate
Overall First Year	12/FA	552	96.2	92.8	78.8	71.9	68.3	57.4	67.9
First-Year Males	12/FA	226	95.6	90.7	72.6	65.0	61.1	42.9	58.8
First-Year Females	12/FA	326	96.6	94.2	83.1	76.7	73.3	67.5	74.2
Black or African American	12/FA	27	81.5	81.5	63.0	59.3	51.9	22.2	48.1
Hispanic	12/FA	55	94.5	87.3	65.5	58.2	52.7	45.5	49.1
First Generation	12/FA	222	97.7	93.2	79.7	72.5	68.9	54.5	66.7
Pell Recipients	12/FA	167	97.0	94.6	79.0	71.9	67.7	53.9	65.3

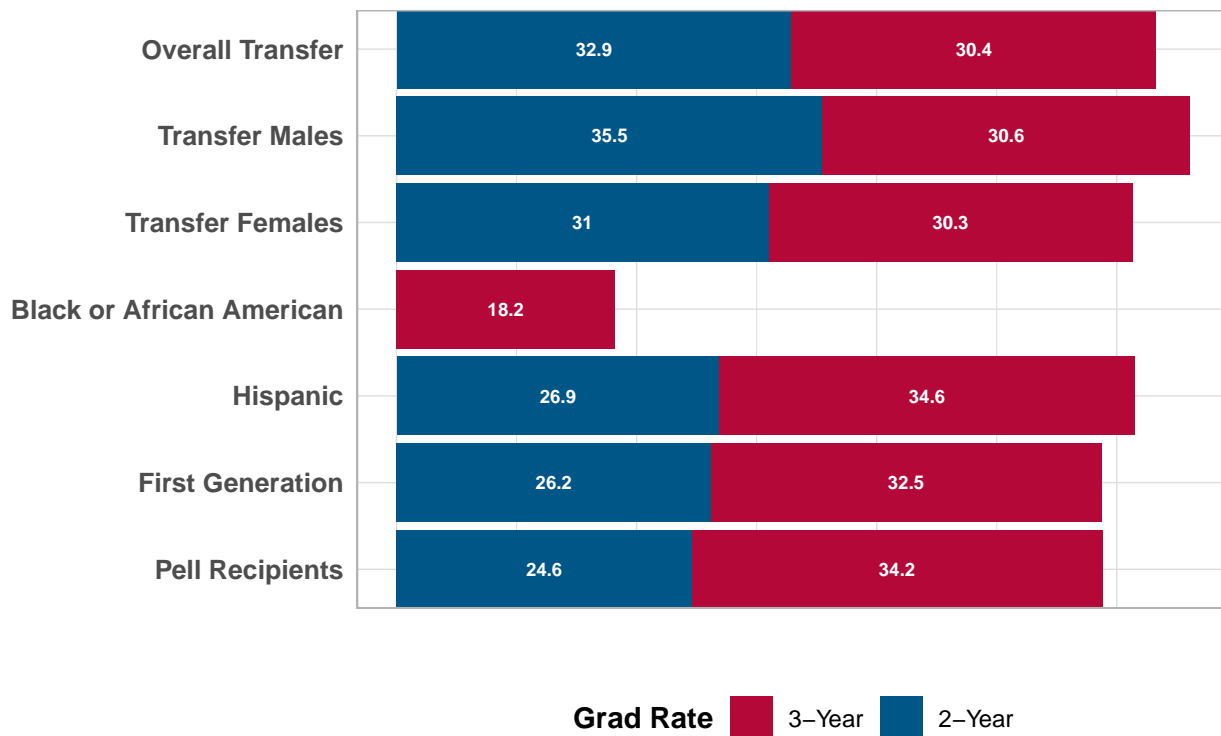
Fall 2012 First Year Students
Graduation Rate by Select Characteristics



Fall 2012 - Transfer

Population	Cohort	Size	Winter	Spring	Second Fall	Third Fall	Fourth Fall	Two-Year Grad Rate	Three-Year Grad Rate
Overall Transfer	12/FA	289	91.7	86.2	78.2	34.3	9.3	32.9	63.3
Transfer Males	12/FA	121	90.9	83.5	76.0	28.9	4.1	35.5	66.1
Transfer Females	12/FA	168	92.3	88.1	79.8	38.1	13.1	31	61.3
Black or African American	12/FA	11	63.6	54.5	54.5	36.4	27.3	0	18.2
Hispanic	12/FA	26	76.9	73.1	65.4	23.1	0.0	26.9	61.5
First Generation	12/FA	126	92.1	83.3	76.2	36.5	11.1	26.2	58.7
Pell Recipients	12/FA	114	93.9	88.6	84.2	43.0	13.2	24.6	58.8

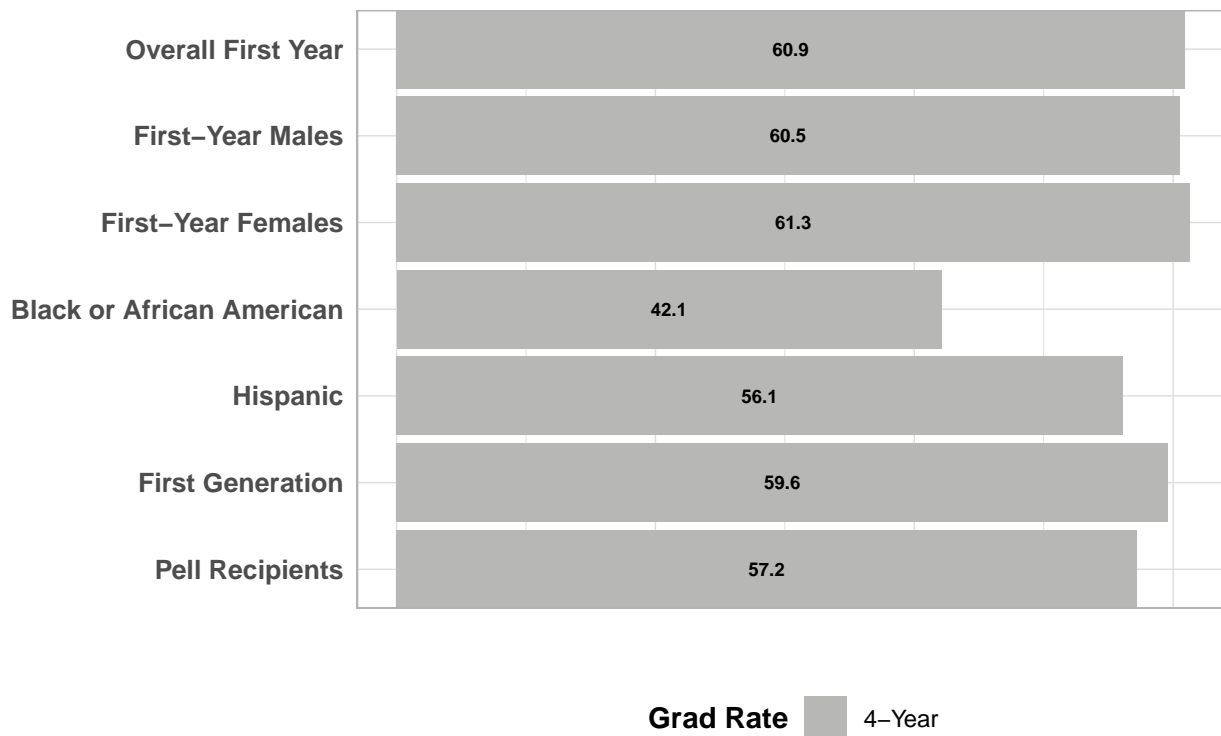
Fall 2012 Transfer Students
Graduation Rate by Select Characteristics



Fall 2013 - First-time Full-time

Population	Cohort	Size	Winter	Spring	Second Fall	Third Fall	Fourth Fall	Four-Year Grad Rate	Six-Year Grad Rate
Overall First Year	13/FA	529	95.3	92.8	78.4	70.9	68.2	60.9	
First-Year Males	13/FA	258	96.1	91.5	79.1	71.7	68.6	60.5	
First-Year Females	13/FA	271	94.5	94.1	77.9	70.1	67.9	61.3	
Black or African American	13/FA	19	84.2	84.2	63.2	52.6	52.6	42.1	
Hispanic	13/FA	57	100.0	96.5	82.5	73.7	68.4	56.1	
First Generation	13/FA	213	95.8	93.0	76.5	70.0	66.7	59.6	
Pell Recipients	13/FA	173	96.5	93.6	75.7	67.1	62.4	57.2	

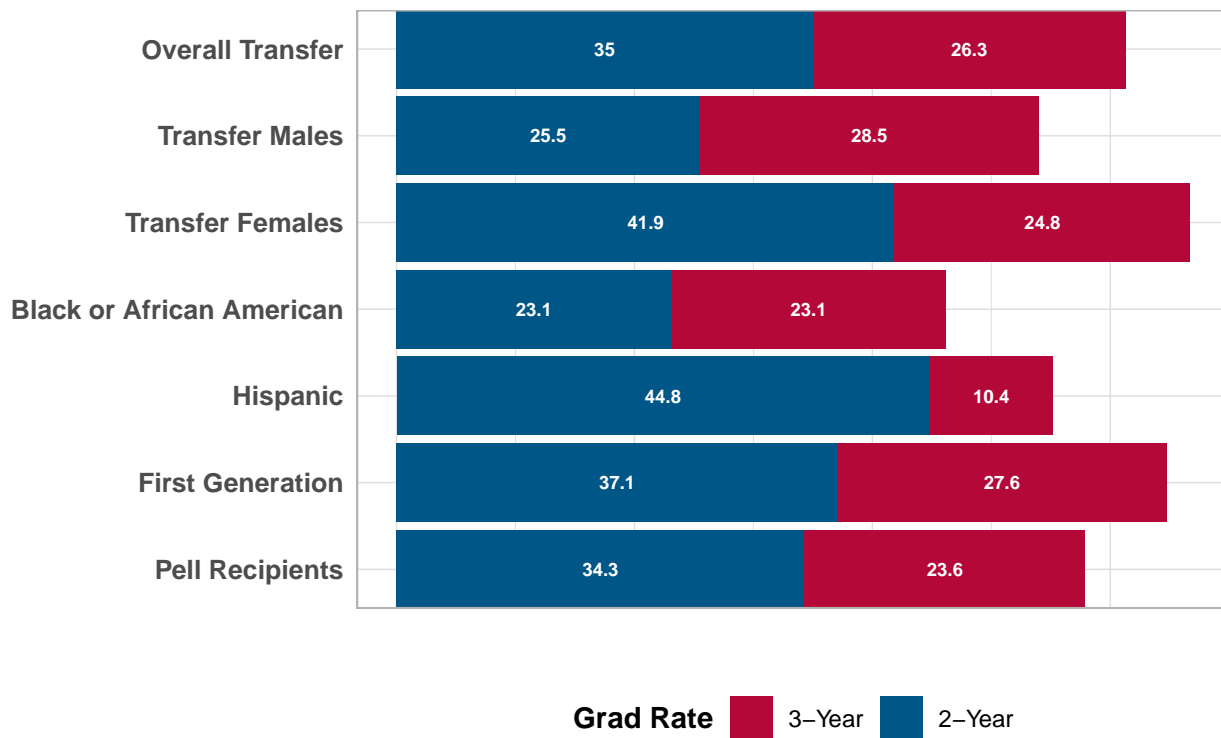
Fall 2013 First Year Students
Graduation Rate by Select Characteristics



Fall 2013 - Transfer

Population	Cohort	Size	Winter	Spring	Second Fall	Third Fall	Fourth Fall	Two-Year Grad Rate	Three-Year Grad Rate
Overall Transfer	13/FA	323	91.0	85.1	75.9	32.5	8.0	35	61.3
Transfer Males	13/FA	137	89.8	85.4	74.5	38.7	8.0	25.5	54
Transfer Females	13/FA	186	91.9	84.9	76.9	28.0	8.1	41.9	66.7
Black or African American	13/FA	13	92.3	84.6	69.2	38.5	23.1	23.1	46.2
Hispanic	13/FA	29	96.6	82.8	72.4	17.2	3.4	44.8	55.2
First Generation	13/FA	116	92.2	84.5	76.7	31.0	5.2	37.1	64.7
Pell Recipients	13/FA	140	92.9	87.9	76.4	31.4	10.0	34.3	57.9

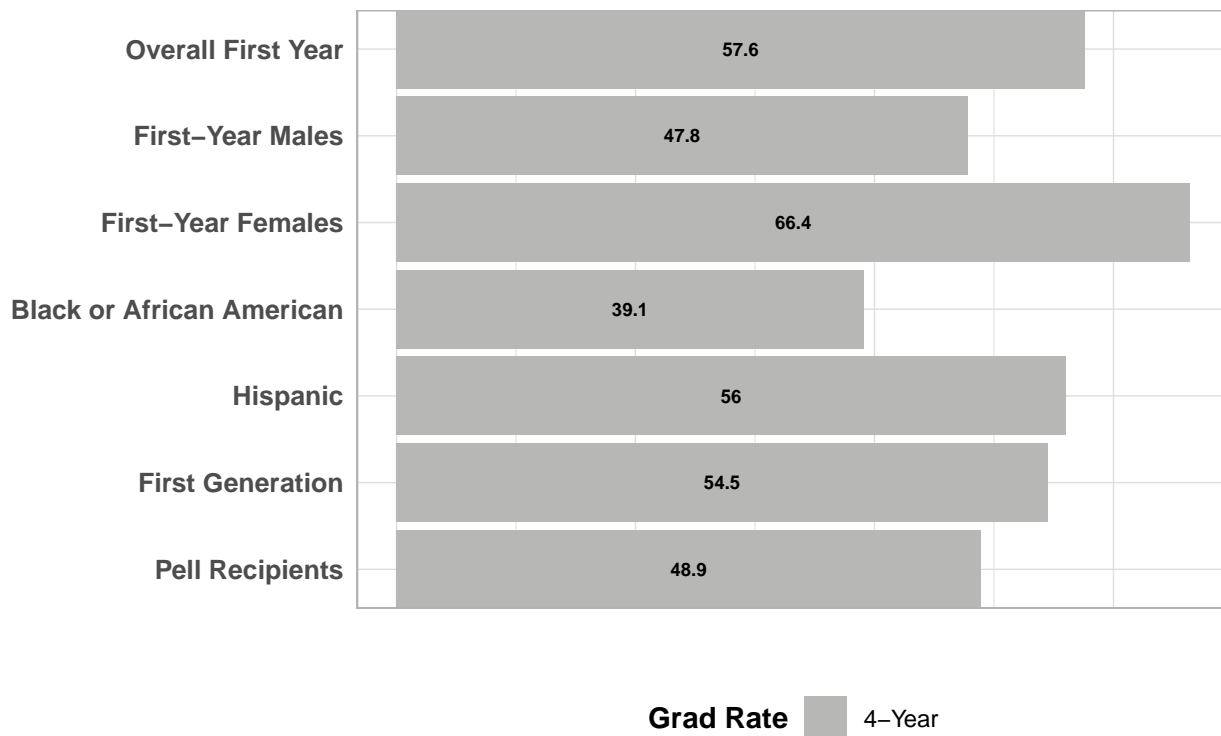
Fall 2013 Transfer Students
Graduation Rate by Select Characteristics



Fall 2014 - First-time Full-time

Population	Cohort	Size	Winter	Spring	Second Fall	Third Fall	Fourth Fall	Four-Year Grad Rate	Six-Year Grad Rate
Overall First Year	14/FA	576	95.0	91.8	80.2	69.6	65.5	57.6	
First-Year Males	14/FA	272	92.6	88.6	76.1	61.8	55.1	47.8	
First-Year Females	14/FA	304	97.0	94.7	83.9	76.6	74.7	66.4	
Black or African American	14/FA	23	95.7	91.3	69.6	60.9	60.9	39.1	
Hispanic	14/FA	75	89.3	88.0	82.7	68.0	61.3	56	
First Generation	14/FA	233	93.6	90.6	76.4	65.2	61.8	54.5	
Pell Recipients	14/FA	180	96.1	92.2	78.3	65.6	62.8	48.9	

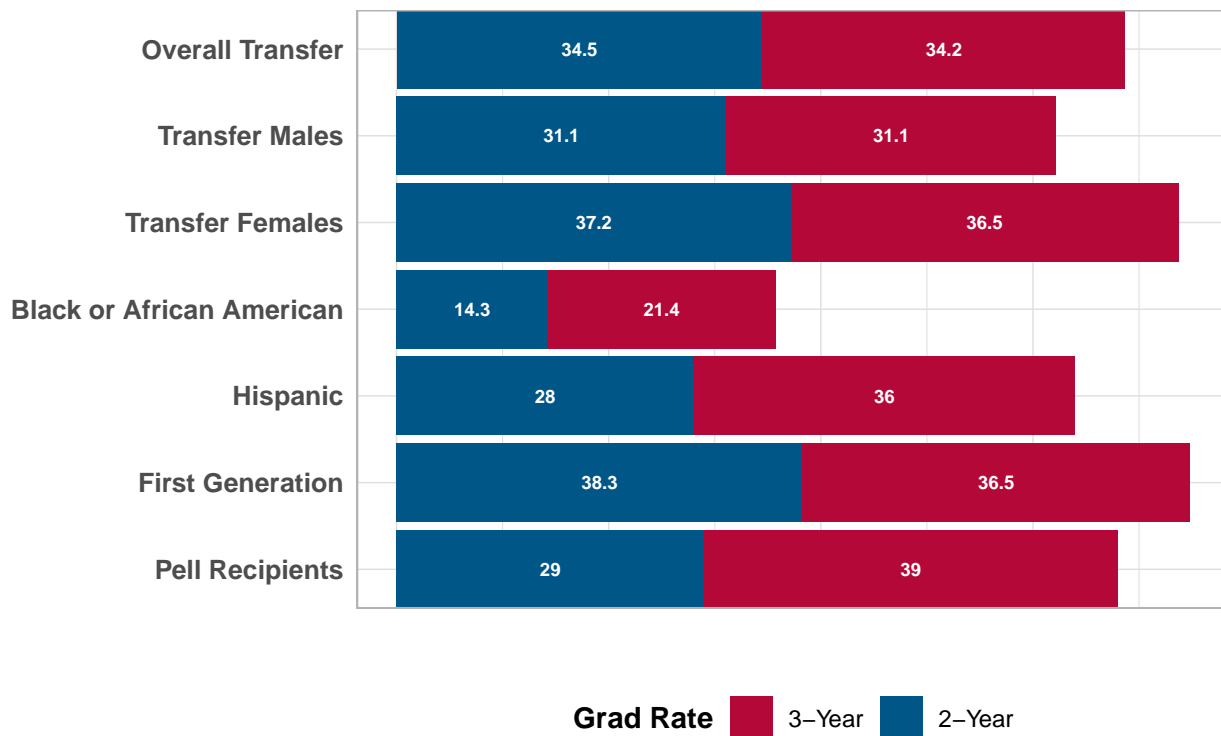
Fall 2014 First Year Students
Graduation Rate by Select Characteristics



Fall 2014 - Transfer

Population	Cohort	Size	Winter	Spring	Second Fall	Third Fall	Fourth Fall	Two-Year Grad Rate	Three-Year Grad Rate
Overall Transfer	14/FA	275	94.2	89.1	82.2	42.2	10.5	34.5	68.7
Transfer Males	14/FA	119	93.3	87.4	79.0	39.5	10.9	31.1	62.2
Transfer Females	14/FA	156	94.9	90.4	84.6	44.2	10.3	37.2	73.7
Black or African American	14/FA	14	78.6	64.3	42.9	28.6	7.1	14.3	35.7
Hispanic	14/FA	25	100.0	92.0	88.0	48.0	20.0	28	64
First Generation	14/FA	107	93.5	91.6	83.2	39.3	5.6	38.3	74.8
Pell Recipients	14/FA	100	93.0	89.0	82.0	45.0	11.0	29	68

Fall 2014 Transfer Students
Graduation Rate by Select Characteristics



Fall 2015 - First-time Full-time

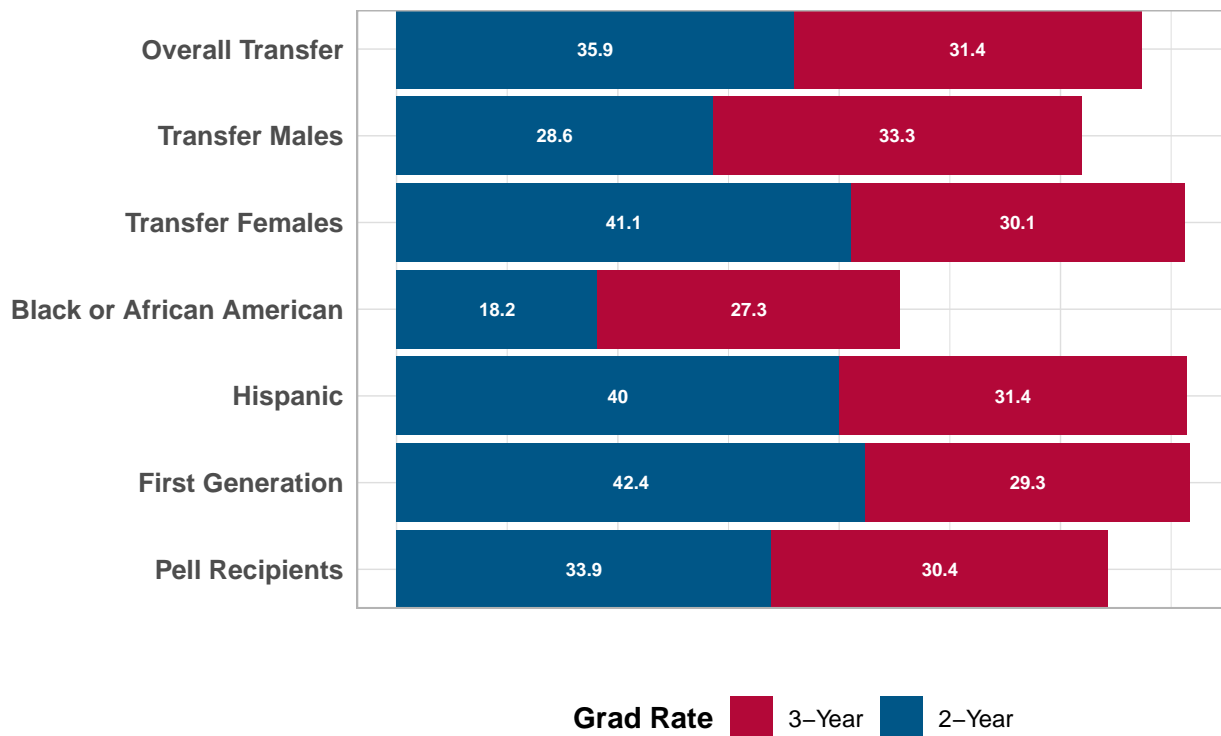
Population	Cohort	Size	Winter	Spring	Second Fall	Third Fall	Fourth Fall	Four-Year Grad Rate	Six-Year Grad Rate
Overall First Year	15/FA	599	93.0	89.1	77.8	68.9	63.9		
First-Year Males	15/FA	316	91.8	87.7	75.3	66.8	61.1		
First-Year Females	15/FA	283	94.3	90.8	80.6	71.4	67.1		
Black or African American	15/FA	26	96.2	92.3	76.9	61.5	53.8		
Hispanic	15/FA	86	91.9	87.2	76.7	62.8	58.1		
First Generation	15/FA	235	94.5	91.5	82.1	72.3	68.1		
Pell Recipients	15/FA	211	94.3	91.5	82.0	71.1	66.4		

***Fall 2015 First Year Student Graduation Rate chart will be provided beginning Fall 2019.**

Fall 2015 - Transfer

Population	Cohort	Size	Winter	Spring	Second Fall	Third Fall	Fourth Fall	Two-Year Grad Rate	Three-Year Grad Rate
Overall Transfer	15/FA	251	92.8	88.4	80.5	37.1	7.6	35.9	67.3
Transfer Males	15/FA	105	94.3	86.7	76.2	34.3	5.7	28.6	61.9
Transfer Females	15/FA	146	91.8	89.7	83.6	39.0	8.9	41.1	71.2
Black or African American	15/FA	11	81.8	63.6	54.5	36.4	9.1	18.2	45.5
Hispanic	15/FA	35	94.3	91.4	82.9	28.6	5.7	40	71.4
First Generation	15/FA	92	92.4	89.1	78.3	28.3	6.5	42.4	71.7
Pell Recipients	15/FA	115	92.2	85.2	73.9	32.2	5.2	33.9	64.3

Fall 2015 Transfer Students
Graduation Rate by Select Characteristics



Fall 2016 - First-time Full-time

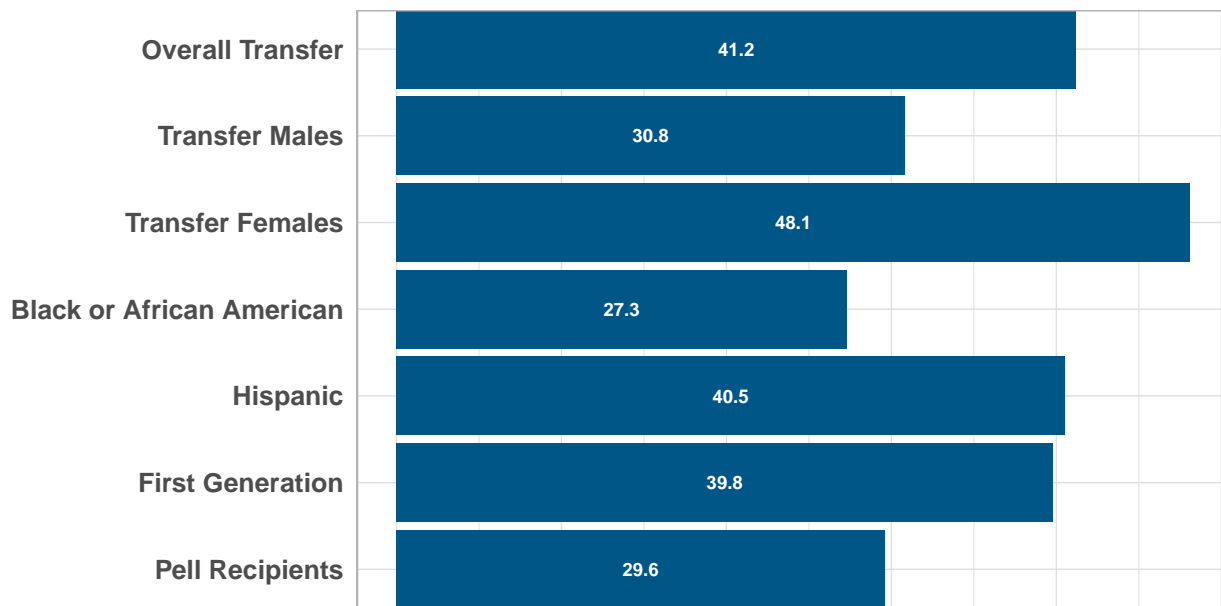
Population	Cohort	Size	Winter	Spring	Second Fall	Third Fall	Fourth Fall	Four-Year Grad Rate	Six-Year Grad Rate
Overall First Year	16/FA	589	92.4	89.8	79.3	69.8	0		
First-Year Males	16/FA	302	92.7	89.7	77.2	66.2	0		
First-Year Females	16/FA	287	92.0	89.9	81.5	73.5	0		
Black or African American	16/FA	26	100.0	88.5	76.9	61.5	0		
Hispanic	16/FA	102	93.1	90.2	82.4	66.7	0		
First Generation	16/FA	240	90.0	86.7	79.2	66.7	0		
Pell Recipients	16/FA	174	92.0	87.9	79.3	66.1	0		

***Fall 2016 First Year Student Graduation Rate chart will be provided beginning Fall 2020.**

Fall 2016 - Transfer

Population	Cohort	Size	Winter	Spring	Second Fall	Third Fall	Fourth Fall	Two-Year Grad Rate	Three-Year Grad Rate
Overall Transfer	16/FA	267	91.4	88.8	82.4	36.7	0	41.2	
Transfer Males	16/FA	107	93.5	89.7	81.3	41.1	0	30.8	
Transfer Females	16/FA	160	90.0	88.1	83.1	33.8	0	48.1	
Black or African American	16/FA	11	81.8	72.7	54.5	18.2	0	27.3	
Hispanic	16/FA	37	91.9	86.5	83.8	29.7	0	40.5	
First Generation	16/FA	103	92.2	88.3	83.5	41.7	0	39.8	
Pell Recipients	16/FA	98	91.8	87.8	81.6	41.8	0	29.6	

Fall 2016 Transfer Students
Graduation Rate by Select Characteristics



Grad Rate ■ 3-Year

Fall 2017 - First-time Full-time

Population	Cohort	Size	Winter	Spring	Second Fall	Third Fall	Fourth Fall	Four-Year Grad Rate	Six-Year Grad Rate
Overall First Year	17/FA	603	93.5	90.7	81.4	0	0		
First-Year Males	17/FA	285	91.6	89.1	78.6	0	0		
First-Year Females	17/FA	318	95.3	92.1	84.0	0	0		
Black or African American	17/FA	26	84.6	80.8	57.7	0	0		
Hispanic	17/FA	110	92.7	90.9	81.8	0	0		
First Generation	17/FA	239	92.9	89.5	81.2	0	0		
Pell Recipients	17/FA	175	94.3	92.0	80.6	0	0		

***Fall 2017 First Year Student Graduation Rate chart will be provided beginning Fall 2021.**

Fall 2017 - Transfer

Population	Cohort	Size	Winter	Spring	Second Fall	Third Fall	Fourth Fall	Two-Year Grad Rate	Three-Year Grad Rate
Overall Transfer	17/FA	262	92.7	90.5	83.2	0	0		
Transfer Males	17/FA	105	91.4	88.6	80.0	0	0		
Transfer Females	17/FA	157	93.6	91.7	85.4	0	0		
Black or African American	17/FA	10	80.0	70.0	40.0	0	0		
Hispanic	17/FA	47	95.7	91.5	85.1	0	0		
First Generation	17/FA	127	92.1	90.6	85.0	0	0		
Pell Recipients	17/FA	95	89.5	84.2	76.8	0	0		

***Fall 2017 Transfer Student Graduation Rate chart will be provided beginning Fall 2019.**